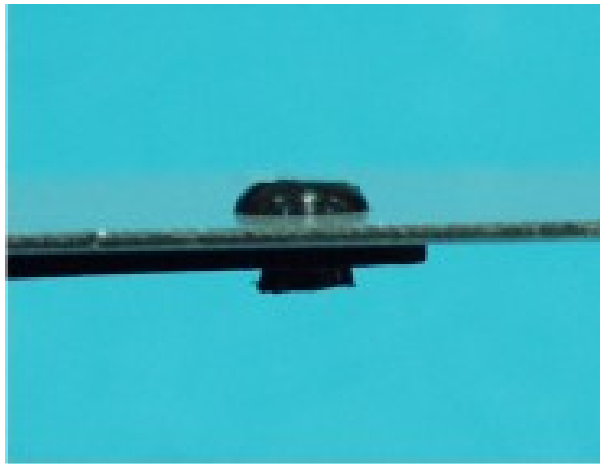


## 塑料铆钉



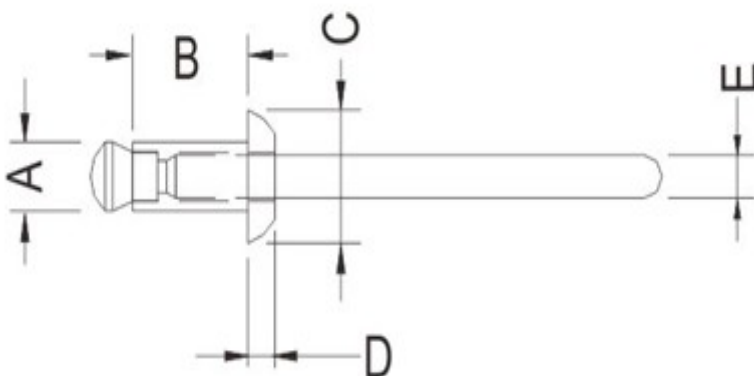
### 塑料铆钉

PART NO: LMB001

- ◆ MATERIAL:PC(UL)/NYLON 66 (UL)
- ◆ FLAME CLASS:94V-2
- ◆ COLOR:NATURAL/BLACK
- ◆ UNIT:mm

用途:用于机板与机板间之固定, 使用方便。

LMB001 结构图



PART NO	A	B	C	D	E	MOUNTING HOLE	CHASSIS THIKNSS	CUT OUT FORCE 剪断力 (kg)	PACKAGE
LMB001	3.2	6.4	6.4	1.4	2.1	Ø3.3	1.0~4.0	20.0	500



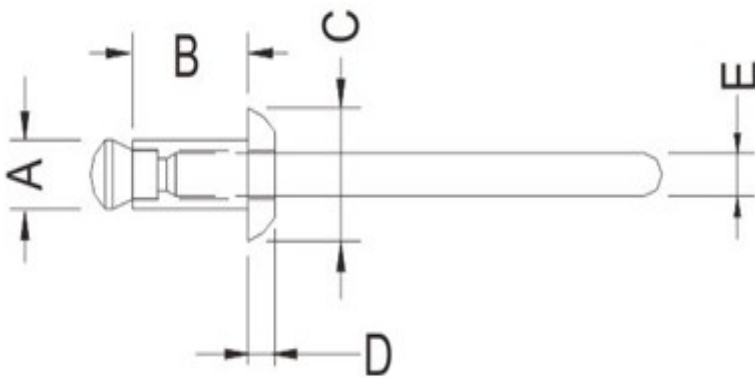
## 塑料铆钉

PART NO: LMB002

- ◆ MATERIAL:PC(UL)/NYLON 66 (UL)
- ◆ FLAME CLASS:94V-2
- ◆ COLOR:NATURAL/BLACK
- ◆ UNIT:mm

用途:用于机板与机板间之固定，使用方便。

LMB002 结构图



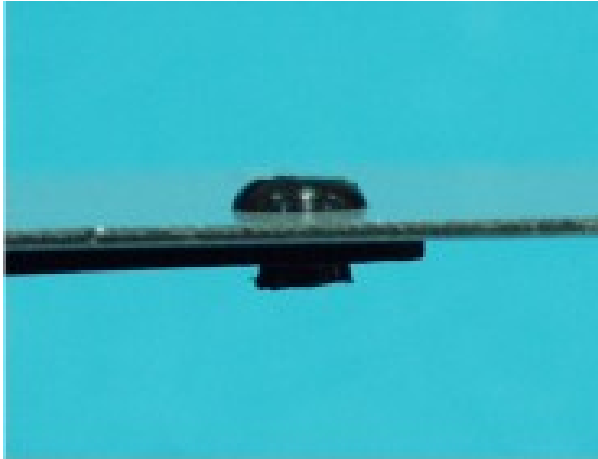
PART NO	A	B	C	D	E	MOUNTING HOLE	CHASSIS THIKNSS	CUT OUT FORCE 剪断力 (kg)	PACKAGE
LMB002	4.0	6.4	8.0	1.8	2.4	Ø4.1	1.0~4.0	25.0	500

## 塑料铆钉

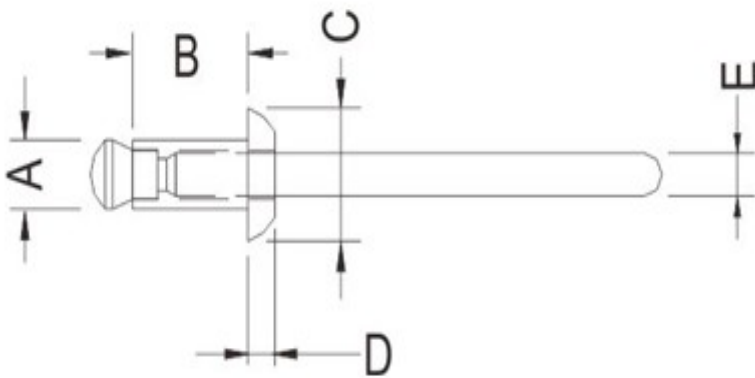
PART NO: LMB003

- ◆ MATERIAL:PC(UL)/NYLON 66 (UL)
- ◆ FLAME CLASS:94V-2
- ◆ COLOR:NATURAL/BLACK
- ◆ UNIT:mm

用途:用于机板与机板间之固定，使用方便。



LMB003 结构图



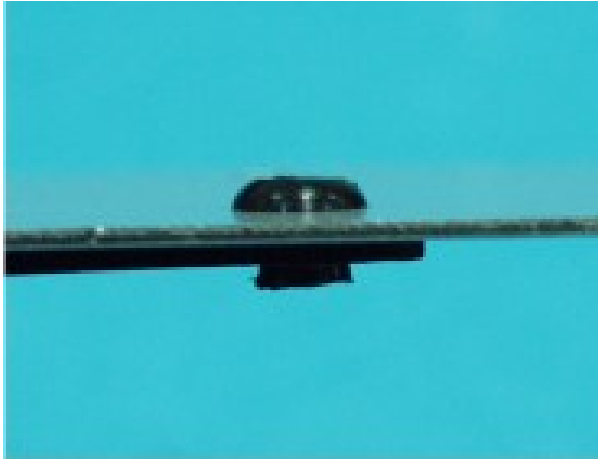
PART NO	A	B	C	D	E	MOUNTING HOLE	CHASSIS THIKNSS	CUT OUT FORCE 剪断力 (kg)	PACKAGE
LMB003	4.8	8.0	9.6	2.0	2.8	Ø4.9	1.5~5.0	40.0	500

## 塑料铆钉

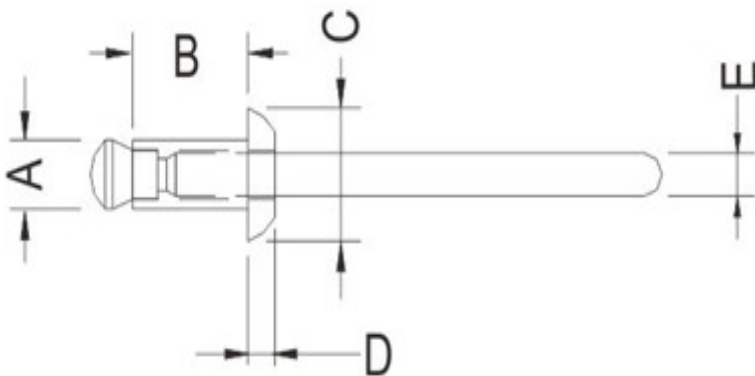
PART NO: LMB004

- ◆ MATERIAL:PC(UL)/NYLON 66 (UL)
- ◆ FLAME CLASS:94V-2
- ◆ COLOR:NATURAL/BLACK
- ◆ UNIT:mm

用途:用于机板与机板间之固定，使用方便。



LMB004 结构图



PART NO	A	B	C	D	E	MOUNTING HOLE	CHASSIS THIKNSS	CUT OUT FORCE 剪断力 (kg)	PACKAGE
LMB004	5.6	9.6	12.0	2.2	3.4	Ø5.7	2.0~5.5	65.0	500



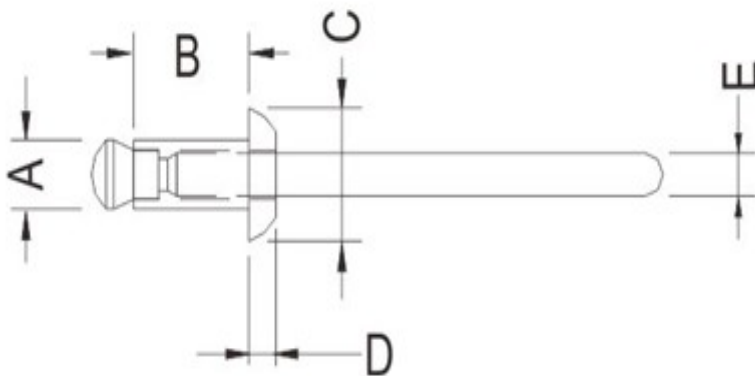
## 塑料铆钉

PART NO: LMB005

- ◆ MATERIAL:PC(UL)/NYLON 66 (UL)
- ◆ FLAME CLASS:94V-2
- ◆ COLOR:NATURAL/BLACK
- ◆ UNIT:mm

用途:用于机板与机板间之固定，使用方便。

LMB005 结构图



PART NO	A	B	C	D	E	MOUNTING HOLE	CHASSIS THIKNSS	CUT OUT FORCE 剪断力 (kg)	PACKAGE
LMB005	3.2	9.6	6.4	1.4	2.1	Ø3.3	4.0~7.0	20.0	500

## 塑料铆钉

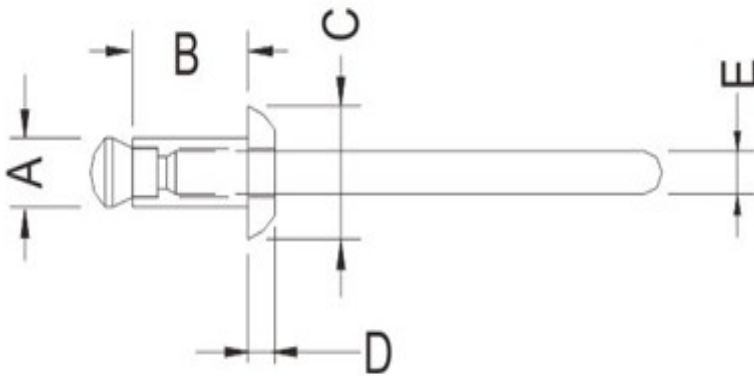
PART NO: LMB006

- ◆ MATERIAL:PC(UL)/NYLON 66 (UL)
- ◆ FLAME CLASS:94V-2
- ◆ COLOR:NATURAL/BLACK
- ◆ UNIT:mm

用途:用于机板与机板间之固定，使用方便。



LMB006 结构图



PART NO	A	B	C	D	E	MOUNTING HOLE	CHASSIS THIKNSS	CUT OUT FORCE 剪断力 (kg)	PACKAGE
LMB006	4.0	9.6	8.0	1.8	2.4	Ø4.1	4.0~7.0	25.0	500

## 塑料铆钉

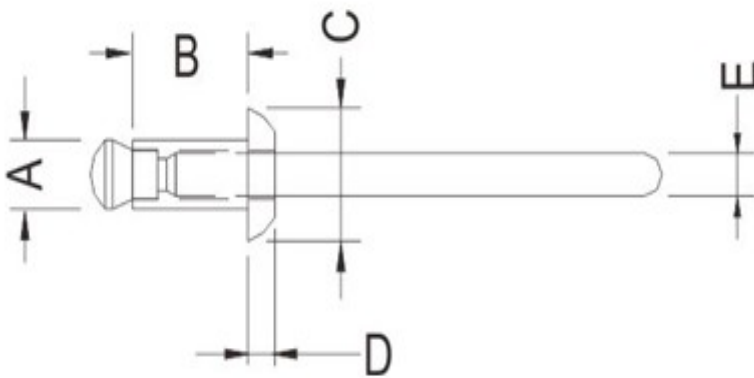
PART NO: LMB007

- ◆ MATERIAL:PC(UL)/NYLON 66 (UL)
- ◆ FLAME CLASS:94V-2
- ◆ COLOR:NATURAL/BLACK
- ◆ UNIT:mm

用途:用于机板与机板间之固定，使用方便。



LMB007 结构图



PART NO	A	B	C	D	E	MOUNTING HOLE	CHASSIS THIKNSS	CUT OUT FORCE 剪断力 (kg)	PACKAGE
LMB007	4.8	11.2	9.6	2.0	2.8	Ø4.9	5.0~8.0	40.0	500

## 塑料铆钉

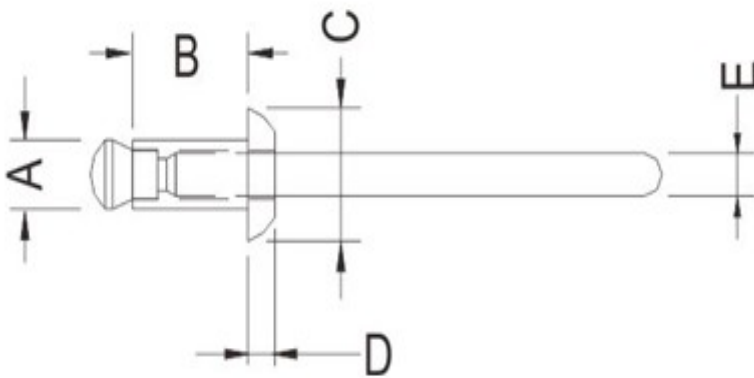
PART NO: LMB008

- ◆ MATERIAL:PC(UL)/NYLON 66 (UL)
- ◆ FLAME CLASS:94V-2
- ◆ COLOR:NATURAL/BLACK
- ◆ UNIT:mm

用途:用于机板与机板间之固定，使用方便。



LMB008 结构图



PART NO	A	B	C	D	E	MOUNTING HOLE	CHASSIS THIKNSS	CUT OUT FORCE 剪断力 (kg)	PACKAGE
LMB008	5.6	12.7	12.0	2.2	3.4	Ø5.7	5.5~8.5	65.0	500





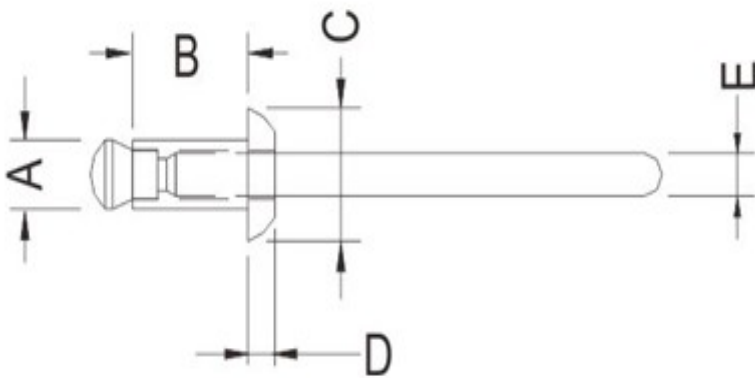
## 塑料铆钉

PART NO: LMB009

- ◆ MATERIAL:PC(UL)/NYLON 66 (UL)
- ◆ FLAME CLASS:94V-2
- ◆ COLOR:NATURAL/BLACK
- ◆ UNIT:mm

用途:用于机板与机板间之固定，使用方便。

LMB009 结构图



PART NO	A	B	C	D	E	MOUNTING HOLE	CHASSIS THIKNSS	CUT OUT FORCE 剪断力 (kg)	PACKAGE
LMB009	3.2	12.7	6.4	1.4	2.1	Ø3.3	7.0~10.0	20.0	500

## 塑料铆钉

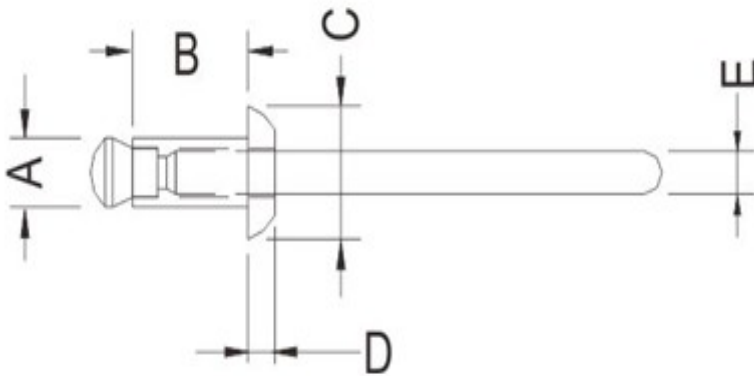
PART NO: LMB010

- ◆ MATERIAL:PC(UL)/NYLON 66 (UL)
- ◆ FLAME CLASS:94V-2
- ◆ COLOR:NATURAL/BLACK
- ◆ UNIT:mm

用途:用于机板与机板间之固定，使用方便。



LMB010 结构图



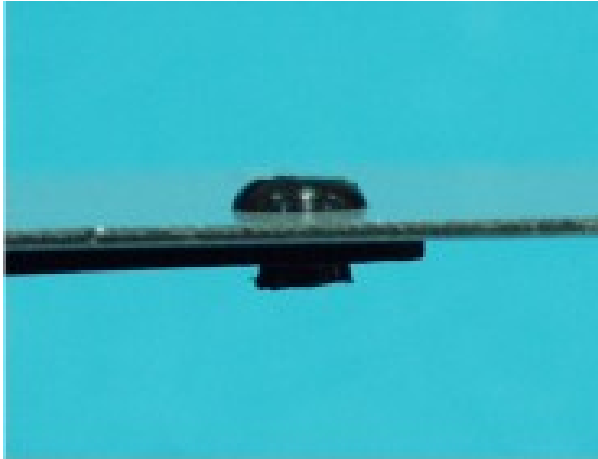
PART NO	A	B	C	D	E	MOUNTING HOLE	CHASSIS THIKNSS	CUT OUT FORCE 剪断力 (kg)	PACKAGE
LMB010	4.0	12.7	8.0	1.8	2.4	Ø4.1	7.0~10.0	25.0	500

## 塑料铆钉

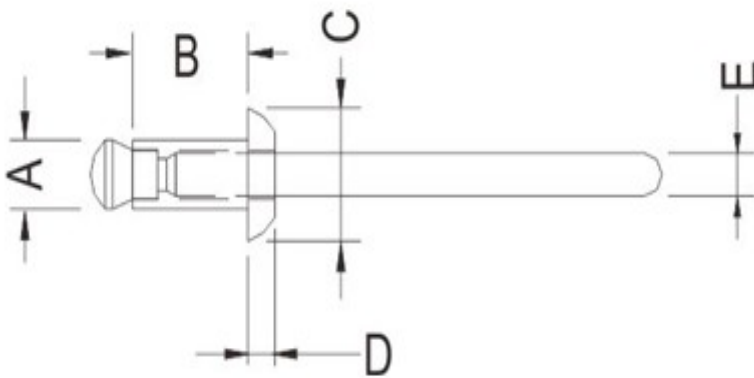
PART NO: LMB011

- ◆ MATERIAL:PC(UL)/NYLON 66 (UL)
- ◆ FLAME CLASS:94V-2
- ◆ COLOR:NATURAL/BLACK
- ◆ UNIT:mm

用途:用于机板与机板间之固定，使用方便。



LMB011 结构图



PART NO	A	B	C	D	E	MOUNTING HOLE	CHASSIS THIKNSS	CUT OUT FORCE 剪断力 (kg)	PACKAGE
LMB011	4.8	14.4	9.6	2.0	2.8	Ø4.9	8.0~11.0	40.0	500

## 塑料铆钉

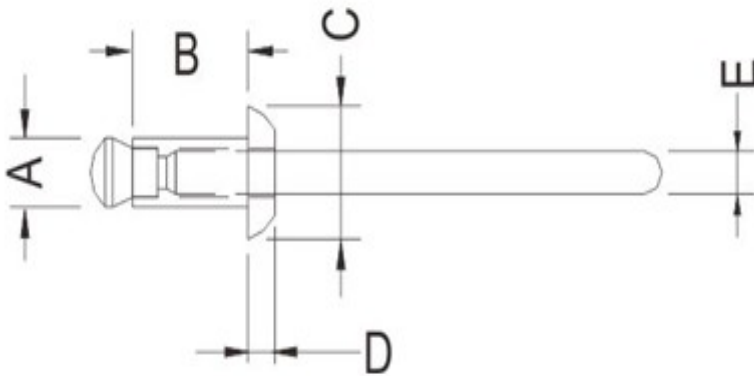
PART NO: LMB012

- ◆ MATERIAL:PC(UL)/NYLON 66 (UL)
- ◆ FLAME CLASS:94V-2
- ◆ COLOR:NATURAL/BLACK
- ◆ UNIT:mm

用途:用于机板与机板间之固定，使用方便。



LMB012 结构图



PART NO	A	B	C	D	E	MOUNTING HOLE	CHASSIS THIKNSS	CUT OUT FORCE 剪断力 (kg)	PACKAGE
LMB012	5.6	15.9	12.0	2.2	3.4	Ø5.7	8.5~12.0	65.0	500



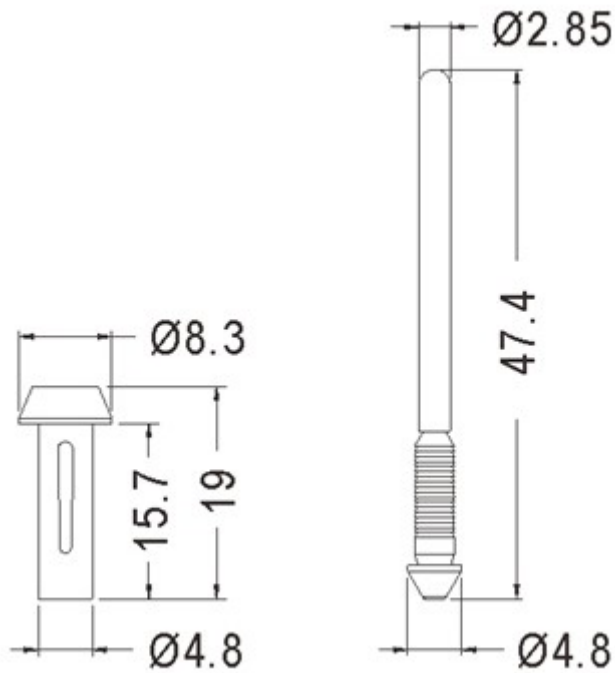
塑料铆钉

PART NO: LMB013

- ◆ CLIP MATERIAL: NYLON 66 (UL)94V-2
- ◆ PIN MATERIAL: POM (UL)94HB
- ◆ COLOR: BLACK
- ◆ UNIT: mm

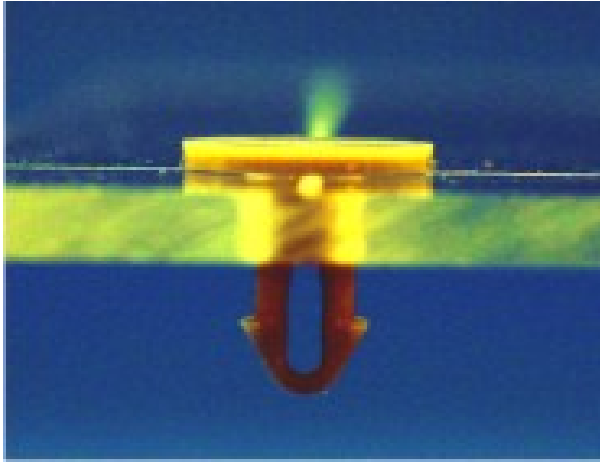
用途: 用于两片机板间之固定, 配合拉钉工具使用。

LMB013 结构图



**PART NO**  
LMB013

**PACKAGE**  
500



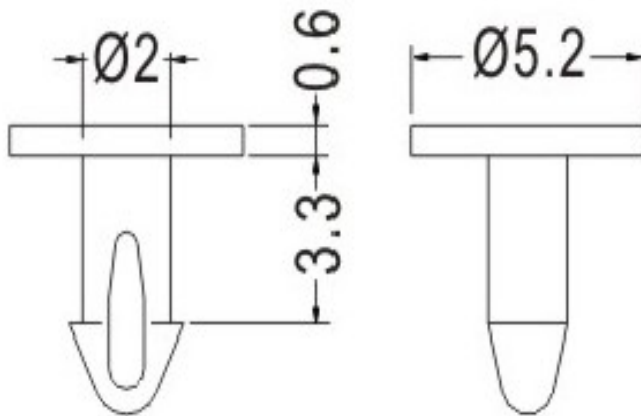
塑料铆钉

PART NO: LMB014

- ◆ MATERIAL: NYLON 66 (UL)
- ◆ FLAME CLASS: 94V-2
- ◆ COLOR: GRAY/NATURAL
- ◆ UNIT: mm

用途: 用于 PC 板与机板间固定, 省时方便。

LMB014 结构图



**PART NO**

LMB014

**PACKAGE**

2000



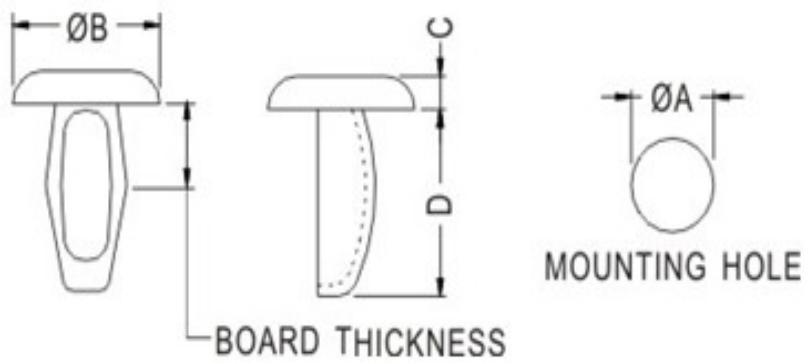
## 塑料铆钉

PART NO: LMB015

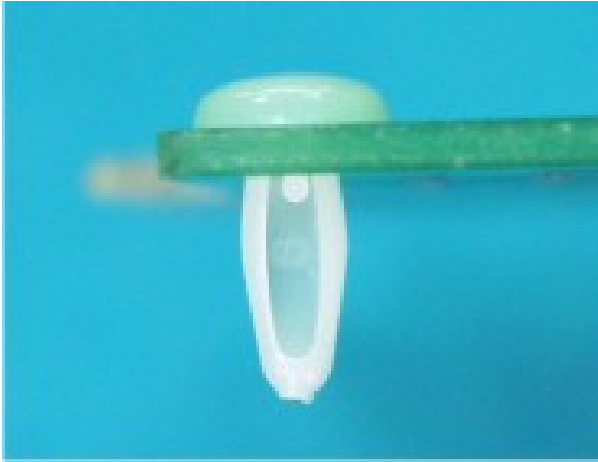
◆UNIT:mm

用途:用于 PC 板与机板间固定, 省时方便。

LMB015 结构图



PART NO	MATERIAL	COLOR	BOARD THICKNESS	A	B	C	D	PACKAGE
LMB015	NYLON 66 UL 94V-2	NATURAL	2.0~3.1	3.3~3.5	7.6	1.6	8.6	2000



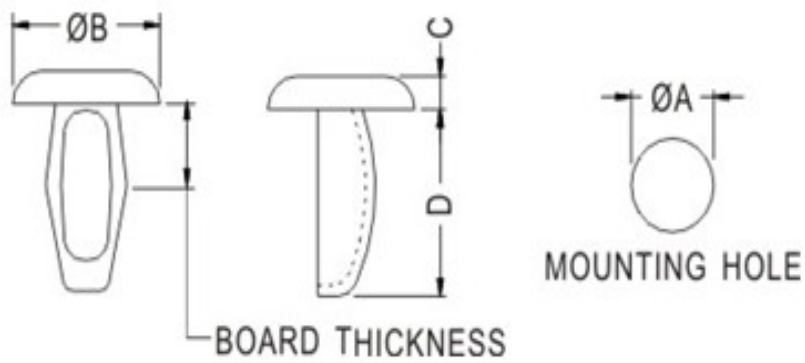
## 塑料铆钉

PART NO: LMB016

◆UNIT:mm

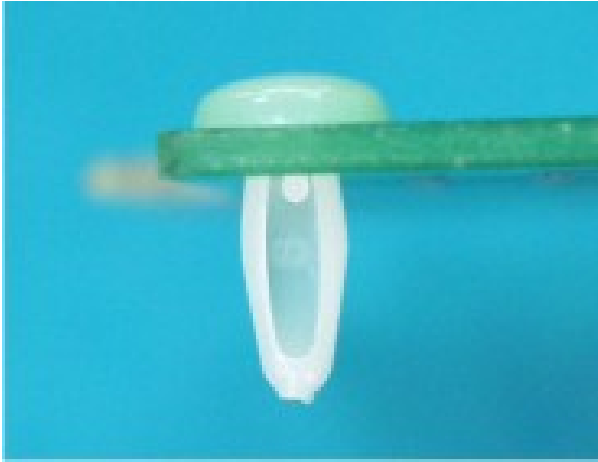
用途:用于 PC 板与机板间固定, 省时方便。

LMB016 结构图



PART NO	MATERIAL	COLOR	BOARD THICKNESS	A	B	C	D	PACKAGE
LMB016	POM UL94HB	WHITE	2.0~3.1	3.3~3.5	7.6	1.6	8.6	2000





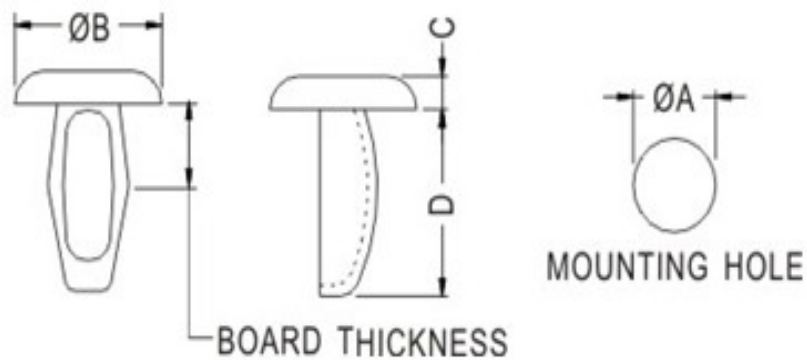
## 塑料铆钉

PART NO: LMB017

◆UNIT:mm

用途:用于 PC 板与机板间固定, 省时方便。

LMB017 结构图



PART NO	MATERIAL	COLOR	BOARD THICKNESS	A	B	C	D	PACKAGE
LMB017	POM UL94HB	BLACK	2.0~3.1	3.3~3.5	7.6	1.6	8.6	2000



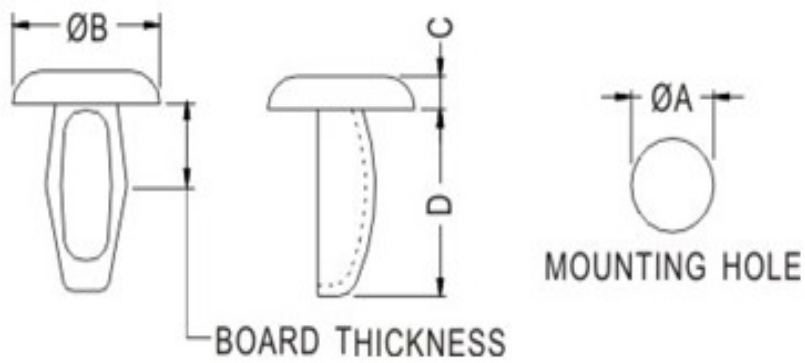
## 塑料铆钉

PART NO: LMB018

◆UNIT:mm

用途:用于 PC 板与机板间固定, 省时方便。

LMB018 结构图



PART NO	MATERIAL	COLOR	BOARD THICKNESS	A	B	C	D	PACKAGE
LMB018	NYLON 66 UL 94V-2	NATURAL	3.0~4.0	3.3~3.6	7.6	1.3	10.8	1000



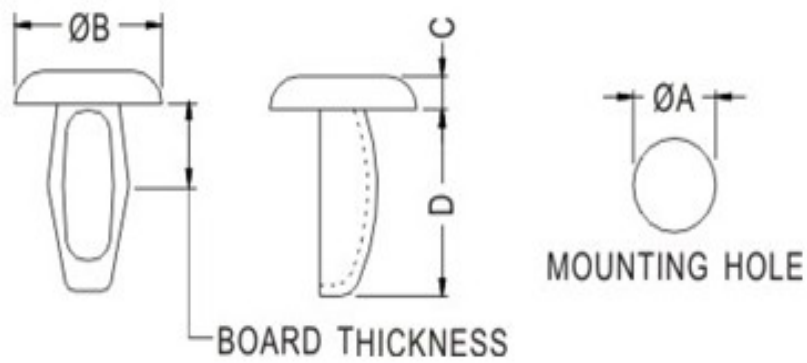
## 塑料铆钉

PART NO: LMB019

◆UNIT:mm

用途:用于 PC 板与机板间固定, 省时方便。

LMB019 结构图



PART NO	MATERIAL	COLOR	BOARD THICKNESS	A	B	C	D	PACKAGE
LMB019	POM UL94HB	WHITE	3.0~4.0	3.3~3.6	7.6	1.3	10.8	1000



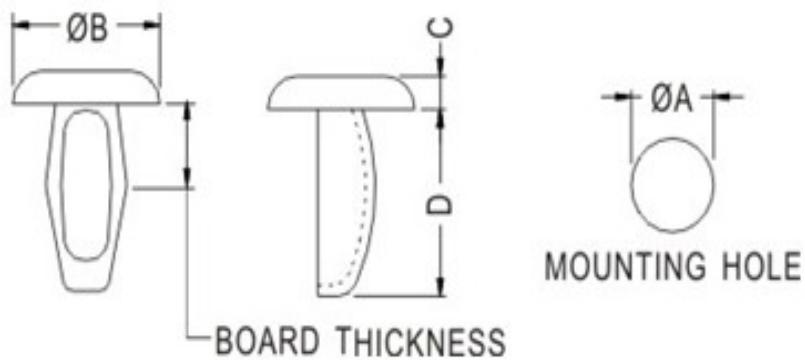
## 塑料铆钉

PART NO: LMB020

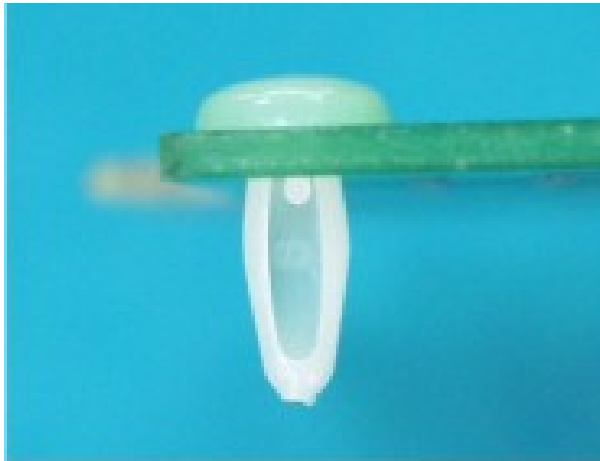
◆UNIT:mm

用途:用于 PC 板与机板间固定, 省时方便。

LMB020 结构图



PART NO	MATERIAL	COLOR	BOARD THICKNESS	A	B	C	D	PACKAGE
LMB020	POM UL94HB	BLACK	3.0~4.0	3.3~3.6	7.6	1.3	10.8	1000



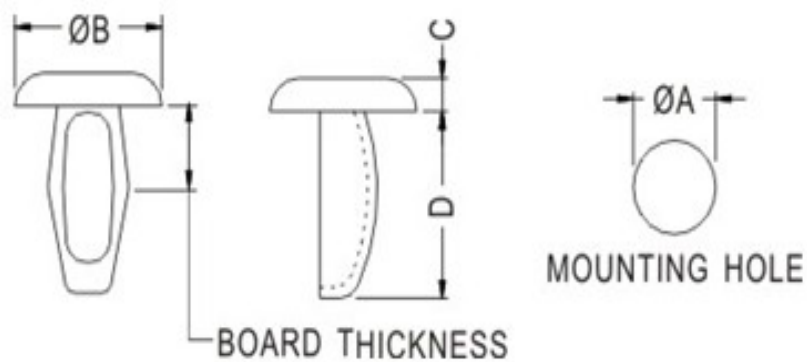
## 塑料铆钉

PART NO: LMB021

◆UNIT:mm

用途:用于 PC 板与机板间固定, 省时方便。

LMB021 结构图



PART NO	MATERIAL	COLOR	BOARD THICKNESS	A	B	C	D	PACKAGE
LMB021	NYLON 66 UL 94V-2	NATURAL	2.0~3.5	3.0~3.5	7.3	1.4	8.4	2000



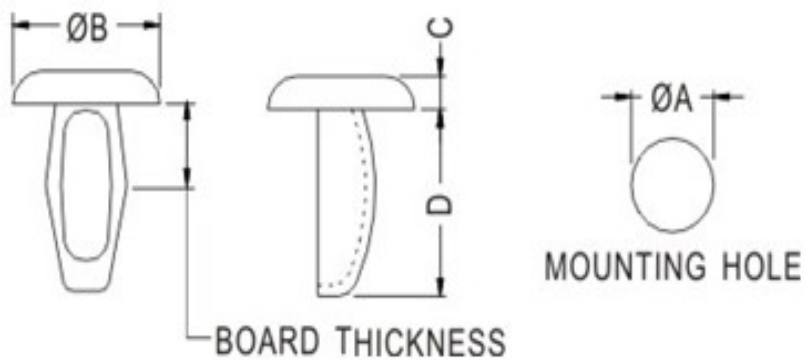
## 塑料铆钉

PART NO: LMB022

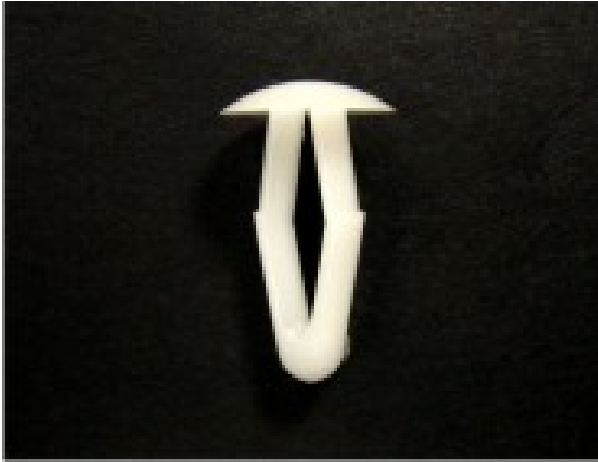
◆UNIT:mm

用途:用于 PC 板与机板间固定, 省时方便。

LMB022 结构图



PART NO	MATERIAL	COLOR	BOARD THICKNESS	A	B	C	D	PACKAGE
LMB022	NYLON 66 UL 94V-2	BLACK	2.0~3.5	3.0~3.5	7.3	1.4	8.4	2000



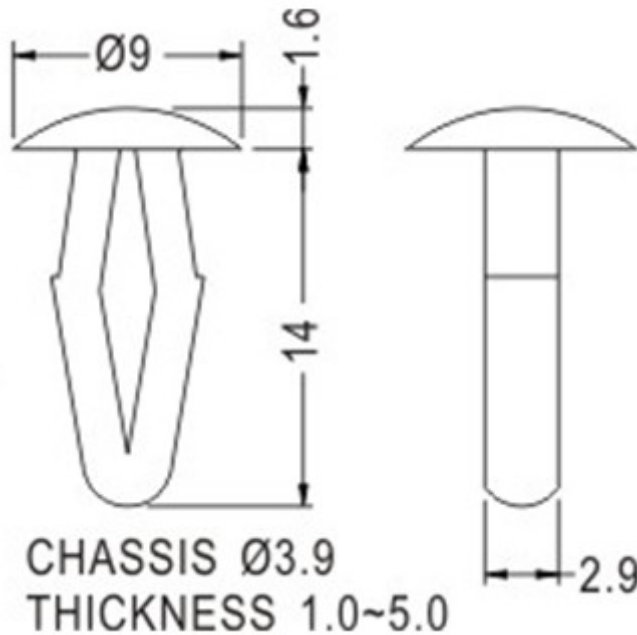
塑料铆钉

PART NO: LMB023

- ◆ MATERIAL: POM (UL)
- ◆ FLAME CLASS: 94HB
- ◆ COLOR: NATURAL
- ◆ UNIT: mm

用途: 用于 PC 板与机板间固定, 省时方便。

LMB023 结构图



**PART NO**  
LMB023

**PACKAGE**  
1000



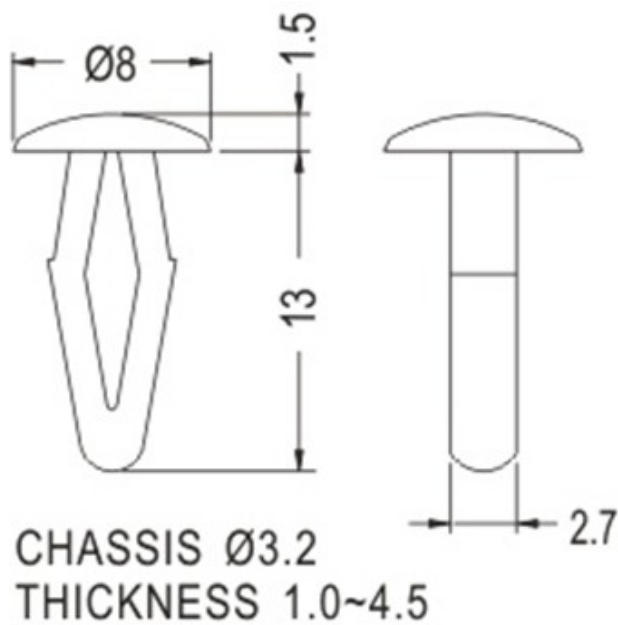
塑料铆钉

PART NO: LMB024

- ◆ MATERIAL:POM (UL)
- ◆ FLAME CLASS:94HB
- ◆ COLOR:NATURAL
- ◆ UNIT:mm

用途:用于 PC 板与机板间固定,省 时方便。

LMB024 结构图



**PART NO**  
LMB024

**PACKAGE**  
1000





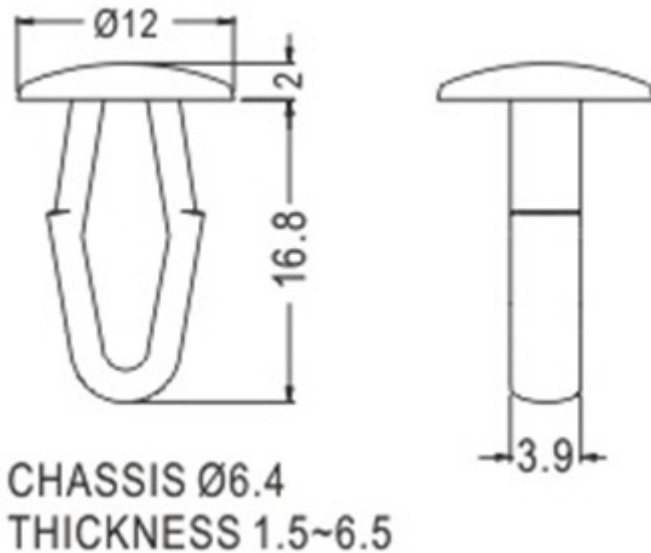
塑料铆钉

PART NO: LMB025

- ◆ MATERIAL:POM (UL)
- ◆ FLAME CLASS:94HB
- ◆ COLOR:NATURAL
- ◆ UNIT:mm

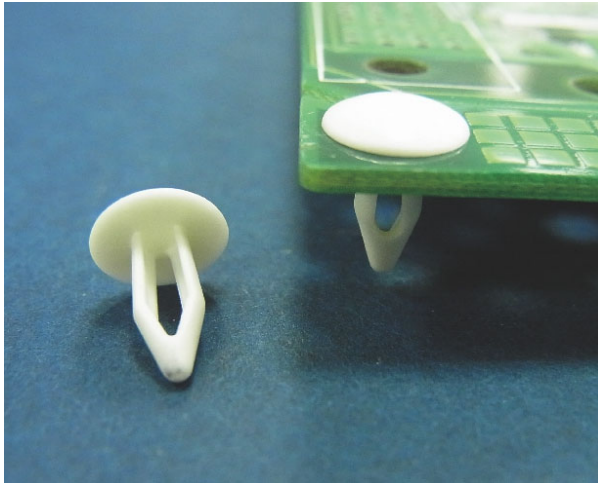
用途:用于 PC 板与机板间固定,省 时方便。

LMB025 结构图



**PART NO**  
LMB025

**PACKAGE**  
1000



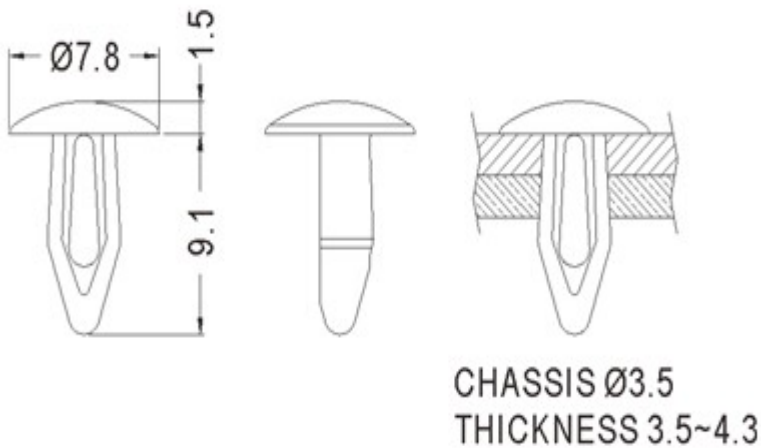
塑料铆钉

PART NO: LMB026

- ◆ MATERIAL:PBT (UL)
- ◆ FLAME CLASS:94V-0
- ◆ COLOR:NATURAL/BLACK
- ◆ UNIT:mm

用途:用于 PC 板与机板间固定, 省时方便。

LMB026 结构图



**PART NO**  
LMB026

**PACKAGE**  
2000



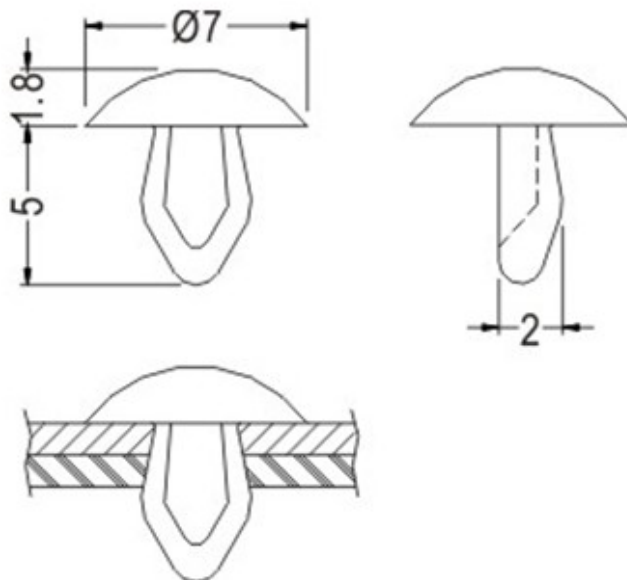
塑料铆钉

PART NO: LMB027

- ◆ MATERIAL: NYLON 66 (UL)
- ◆ FLAME CLASS: 94V-2
- ◆ COLOR: NATURAL
- ◆ UNIT: mm

用途: 用于 PC 板与机板间固定, 省时方便。

LMB027 结构图



CHASSIS Ø3.15~Ø3.2  
THICKNESS 1.6~1.9

**PART NO**  
LMB027

**PACKAGE**  
2000



塑料铆钉

PART NO: LMB028

◆ MATERIAL: NYLON 66 (UL)

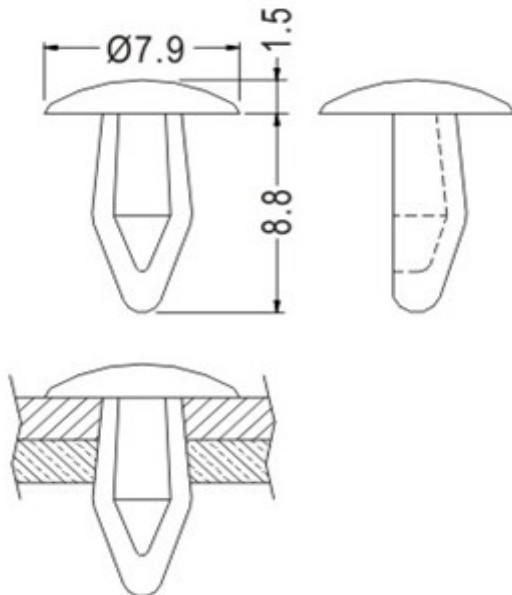
◆ FLAME CLASS: 94V-2

◆ COLOR: NATURAL

◆ UNIT: mm

用途: 用于 PC 板与机板间固定, 省时方便。

LMB028 结构图



CHASSIS  $\varnothing 3.5 \sim \varnothing 3.7$   
THICKNESS 3.5~4.0

**PART NO**

LMB028

**PACKAGE**

2000



塑料铆钉

PART NO: LMB029

◆ MATERIAL: NYLON 66 (UL)

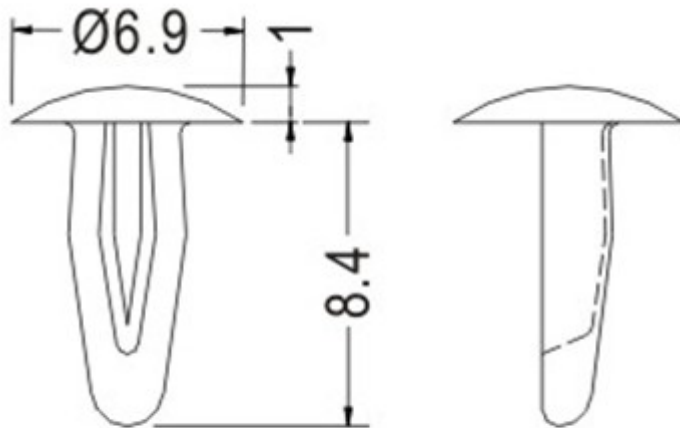
◆ FLAME CLASS: 94V-2

◆ COLOR: NATURAL

◆ UNIT: mm

用途: 用于 PC 板与机板间固定, 省时方便。

LMB029 结构图



CHASSIS Ø3.1~Ø3.2  
THICKNESS 2.0~2.5

**PART NO**

LMB029

**PACKAGE**

2000



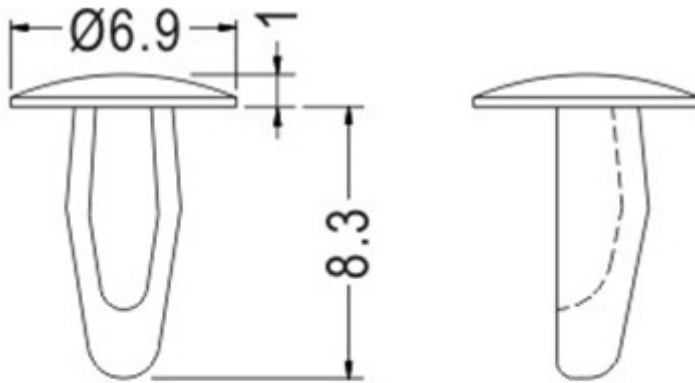
塑料铆钉

PART NO: LMB030

- ◆ MATERIAL: NYLON 66 (UL)
- ◆ FLAME CLASS: 94V-2
- ◆ COLOR: NATURAL
- ◆ UNIT: mm

用途: 用于 PC 板与机板间固定, 省时方便。

LMB030 结构图



CHASSIS Ø3.1~Ø3.2  
THICKNESS 2.0~2.5

**PART NO**  
LMB030

**PACKAGE**  
2000



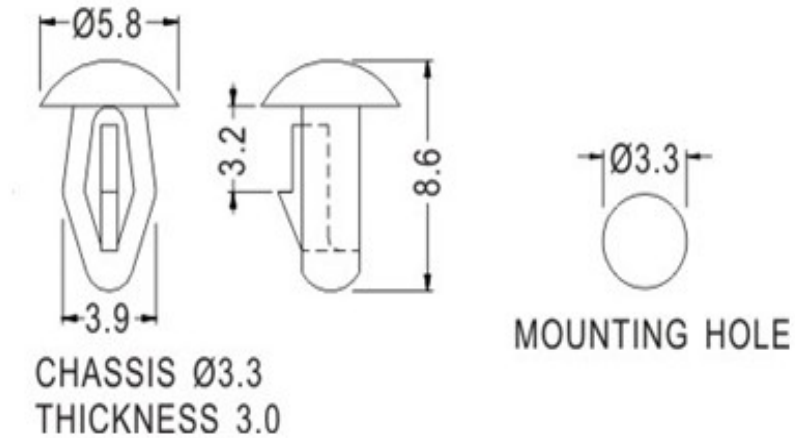
## 塑料铆钉

PART NO: LMB031

- ◆ MATERIAL: NYLON 66 (UL)
- ◆ FLAME CLASS: 94V-2
- ◆ COLOR: NATURAL/BLACK
- ◆ UNIT: mm

用途: 用于 PC 板与机板间固定, 省时方便。

## LMB031 结构图



**PART NO**  
LMB031

**PACKAGE**  
2000



塑料铆钉

PART NO: LMB032

◆ MATERIAL: POM (UL)/NYLON 66 (UL)

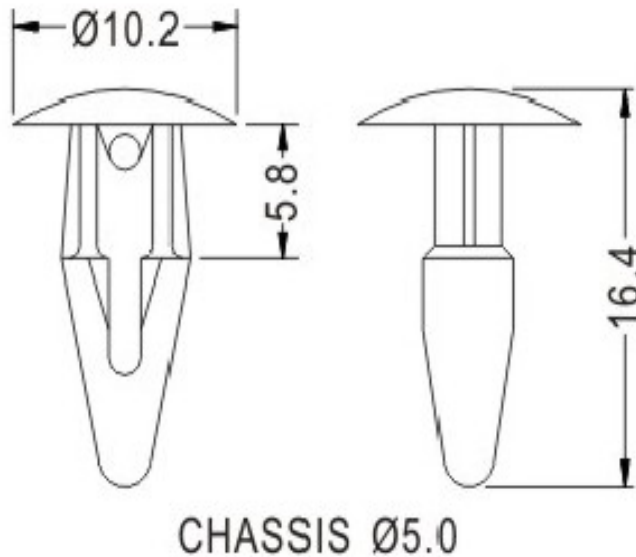
◆ FLAME CLASS: 94HB/94V-2

◆ COLOR: WHITE/BLACK/SILVER GRAY

◆ UNIT: mm

用途: 用于各种零件间之固定, 省时方便。

LMB032 结构图



**PART NO**  
LMB032

**PACKAGE**  
1000





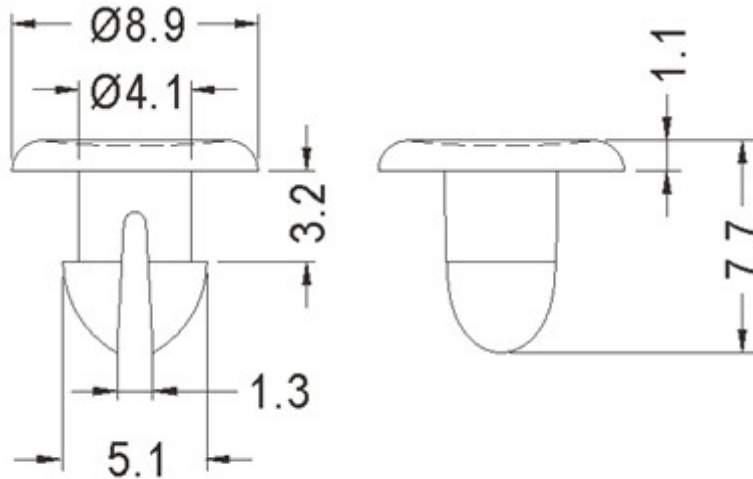
塑料铆钉

PART NO: LMB033

- ◆ MATERIAL: NYOLN 66 (UL)
- ◆ FLAME CLASS: 94V-2
- ◆ COLOR: NATURAL
- ◆ UNIT: mm

用途: 用于 PC 板与机板间固定, 省时方便。

LMB033 结构图



CHASSIS Ø4.5  
THICKNESS 3.0

**PART NO**  
LMB033

**PACKAGE**  
1000



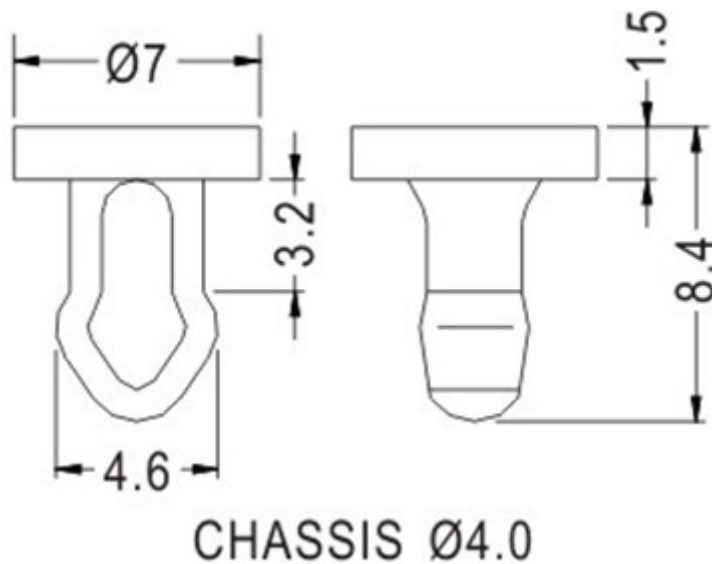
塑料铆钉

PART NO: LMB034

- ◆ MATERIAL: NYLON 66 (UL)
- ◆ FLAME CLASS: 94V-2
- ◆ COLOR: BLACK
- ◆ UNIT: mm

用途: 用于 PC 板与机板间固定, 省时方便。

LMB034 结构图



**PART NO**  
LMB034

**PACKAGE**  
2000



## 塑料铆钉

PART NO: LMB035

◆ MATERIAL: NYLON 66 (UL)

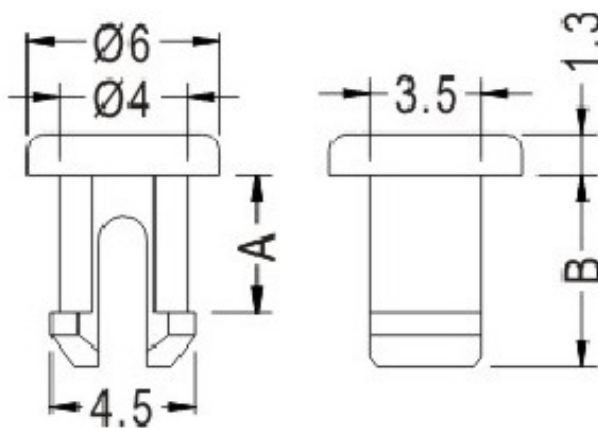
◆ FLAME CLASS: 94V-2

◆ COLOR: NATURAL

◆ UNIT: mm

用途: 用于 PC 板与机板间固定, 省时方便。

LMB035 结构图



CHASSIS Ø4.0

PART NO	A	B	PACKAGE
LMB035	4.3	6.0	2000



## 塑料铆钉

PART NO: LMB036

◆ MATERIAL: NYLON 66 (UL)

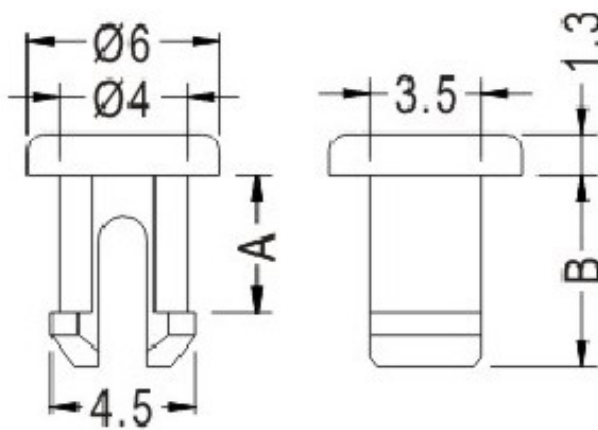
◆ FLAME CLASS: 94V-2

◆ COLOR: NATURAL

◆ UNIT: mm

用途: 用于 PC 板与机板间固定, 省时方便。

LMB036 结构图



CHASSIS Ø4.0

PART NO	A	B	PACKAGE
LMB036	2.0	3.7	2000



塑料铆钉

PART NO: LMB037

◆ MATERIAL: NYLON 66 (UL)

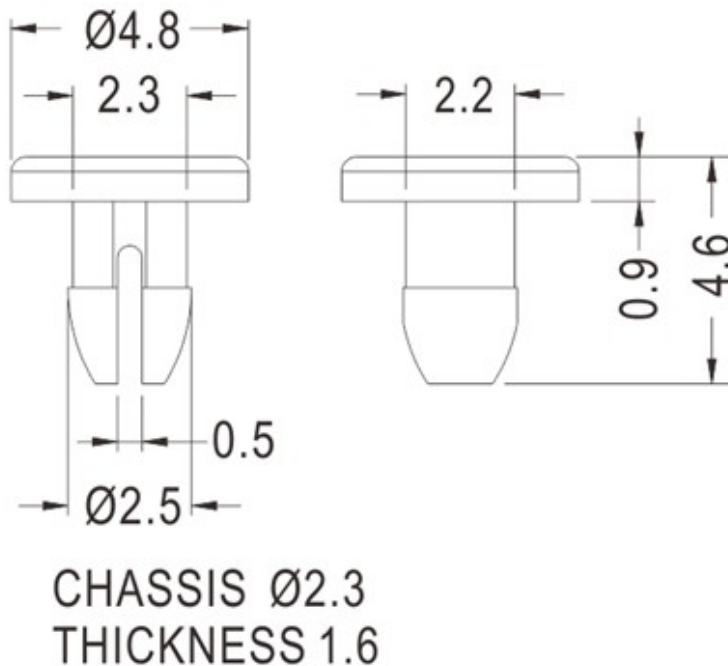
◆ FLAME CLASS: 94V-2

◆ COLOR: NATURAL

◆ UNIT: mm

用途: 用于 PC 板与机板间固定, 省时方便。

LMB037 结构图



**PART NO**

LMB037

**PACKAGE**

2000



塑料铆钉

PART NO: LMB038

◆ MATERIAL: NYLON 66 (UL)

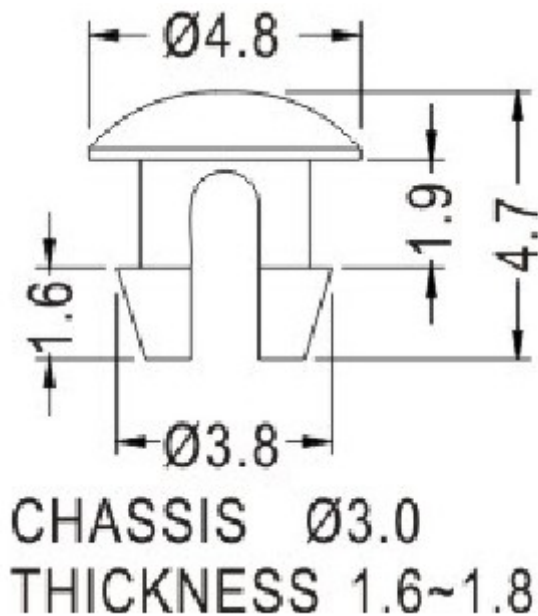
◆ FLAME CLASS: 94V-2

◆ COLOR: NATURAL

◆ UNIT: mm

用途: 用于 PC 板与机板间固定, 省时方便。

LMB038 结构图



**PART NO**  
LMB038

**PACKAGE**  
2000



塑料铆钉

PART NO: LMB039

◆ MATERIAL: NYLON 66 (UL)

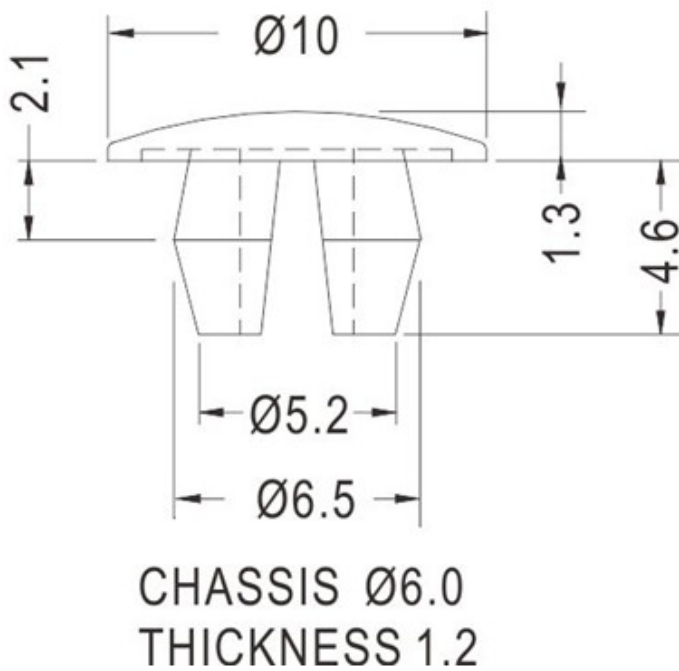
◆ FLAME CLASS: 94V-2

◆ COLOR: NATURAL

◆ UNIT: mm

用途: 用于 PC 板与机板间固定, 省时方便。

LMB039 结构图



**PART NO**  
LMB039

**PACKAGE**  
2000



塑料铆钉

PART NO: LMB040

◆ MATERIAL: NYLON 66 (UL)

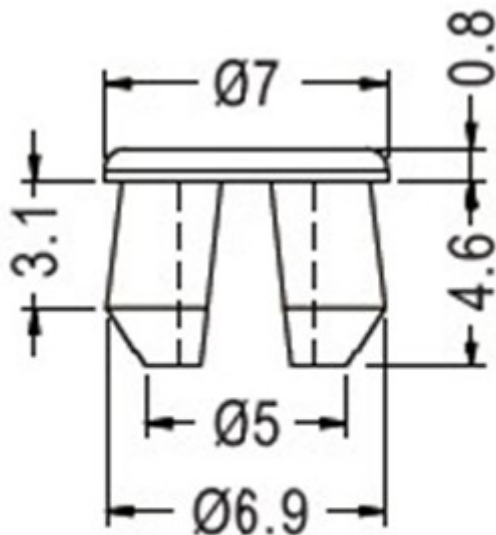
◆ FLAME CLASS: 94V-2

◆ COLOR: NATURAL

◆ UNIT: mm

用途: 用于 PC 板与机板间固定, 省时方便。

LMB040 结构图



CHASSIS Ø6.2  
THICKNESS 2.4

**PART NO**  
LMB040

**PACKAGE**  
2000





塑料铆钉

PART NO: LMB041

◆ MATERIAL: NYLON 66 (UL)

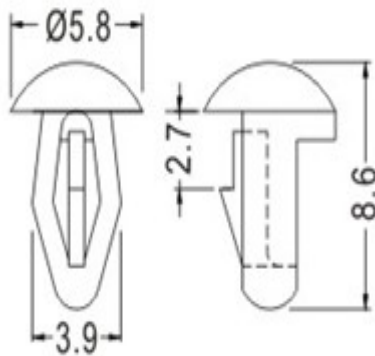
◆ FLAME CLASS: 94V-2

◆ COLOR: NATURAL/BLACK

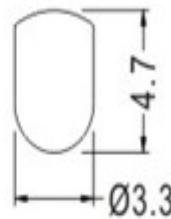
◆ UNIT: mm

用途: 用于 PC 板与机板间固定, 省时方便。

LMB041 结构图



CHASSIS Ø3.3  
THICKNESS 3.0



MOUNTING HOLE

**PART NO**  
LMB041

**PACKAGE**  
2000



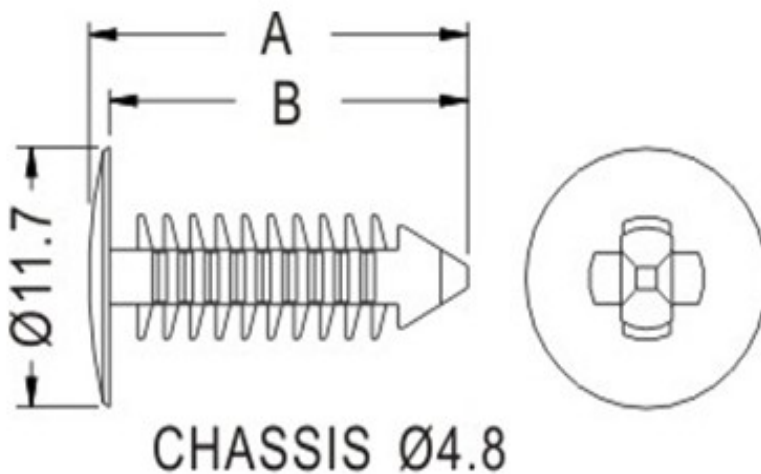
## 塑料铆钉

PART NO: LMB042

- ◆ MATERIAL: NYLON 66 (UL)
- ◆ FLAME CLASS: 94V-2
- ◆ COLOR: BLACK/NATURAL
- ◆ UNIT: mm

用途: 用于  $\text{Ø}4.8$  之木板、铁板、PC 板...  
等板子间的结合固定。

LMB042 结构图



PART NO	A	B	THICKNESS	PACKAGE
LMB042	18.5	17.5	2.54~15.2	1000



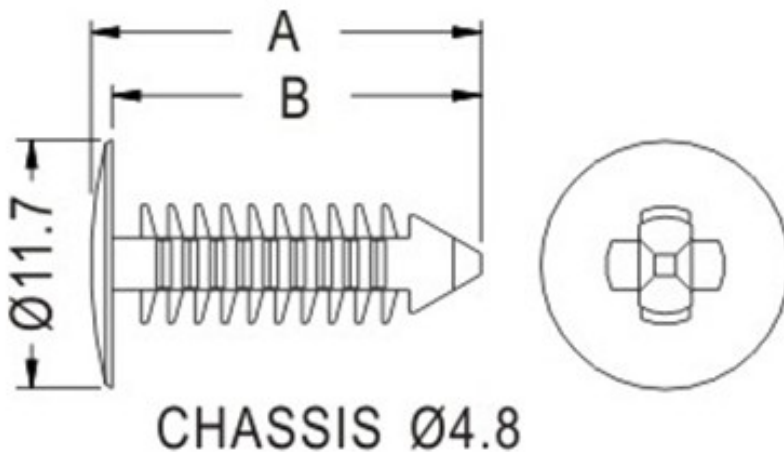
## 塑料铆钉

PART NO: LMB043

- ◆ MATERIAL: NYLON 66 (UL)
- ◆ FLAME CLASS: 94V-2
- ◆ COLOR: BLACK/NATURAL
- ◆ UNIT: mm

用途: 用于  $\text{Ø}4.8$  之木板、铁板、PC 板... 等板子间的结合固定。

LMB043 结构图



PART NO	A	B	THICKNESS	PACKAGE
LMB043	21.5	20.5	4.0~25.0	1000



塑料铆钉

PART NO: LMB044

◆ MATERIAL: NYLON 66 (UL)

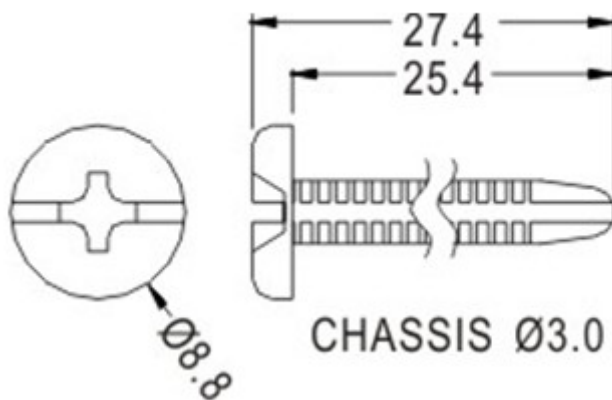
◆ FLAME CLASS: 94V-2

◆ COLOR: NATURAL

◆ UNIT: mm

用途: 用于  $\varnothing 3.0$  之木板、铁板、PC 板...  
等板子间的结合固定。

LMB044 结构图



**PART NO**

LMB044

**PACKAGE**

1000



塑料铆钉

PART NO: LMB045

◆ MATERIAL: NYLON 66 (UL)

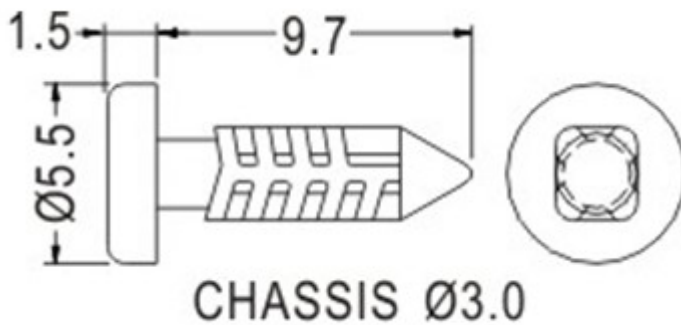
◆ FLAME CLASS: 94V-2

◆ COLOR: NATURAL

◆ UNIT: mm

用途: 用于  $\text{Ø}3.0$  之木板、铁板、PC板...  
等板子间的结合固定。

LMB045 结构图

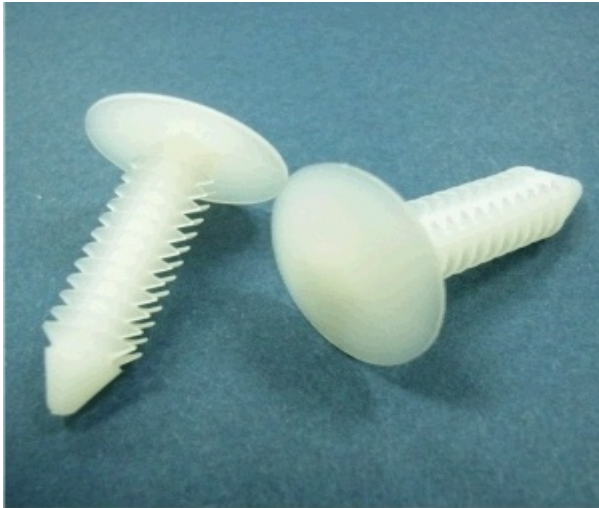


**PART NO**

LMB045

**PACKAGE**

1000



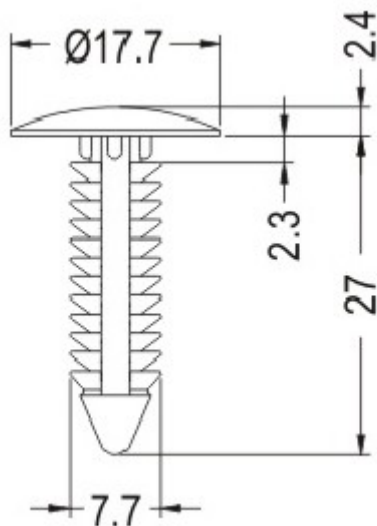
塑料铆钉

PART NO: LMB046

- ◆ MATERIAL: NYLON 66 (UL)
- ◆ FLAME CLASS: 94V-2
- ◆ COLOR: WHITE/BLACK
- ◆ UNIT: mm

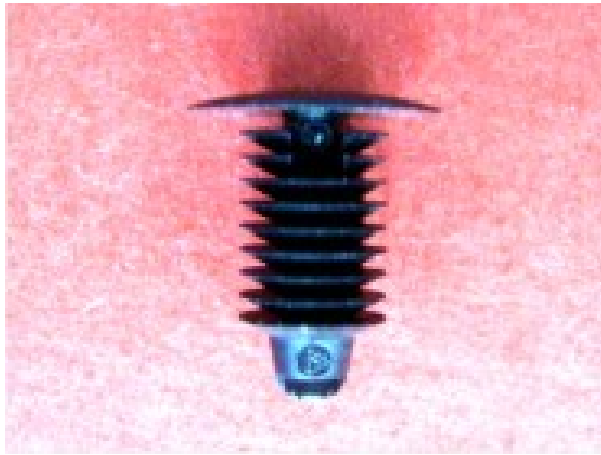
用途: 用于  $\varnothing 7.0$  之木板、铁板、PC 板...  
等板子间的结合固定。

LMB046 结构图



**PART NO**  
LMB046

**PACKAGE**  
1000



塑料铆钉

PART NO: LMB047

◆ MATERIAL: NYLON 66 (UL)

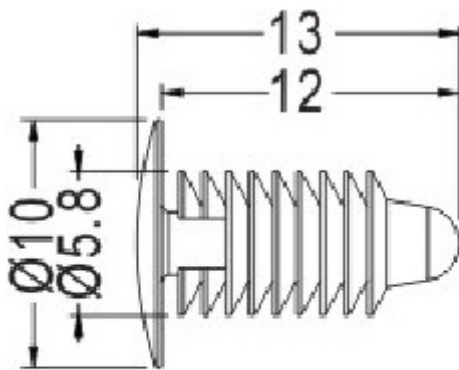
◆ FLAME CLASS: 94V-2

◆ COLOR: BLACK

◆ UINIT: mm

用途: 用于  $\varnothing 5.0$  之木板、铁板、PC 板...  
等板子间的结合固定。

LMB047 结构图



CHASSIS  $\varnothing 5 \pm 0.13$   
THICKNESS 0.7~4.0

**PART NO**  
LMB047

**PACKAGE**  
1000



## 塑料铆钉

PART NO: LMB048

◆ MATERIAL: NYLON 66 (UL)

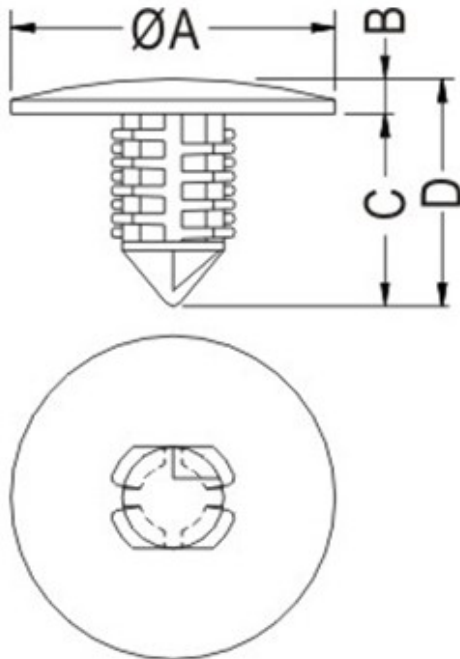
◆ FLAME CLASS: 94V-2

◆ COLOR: BLACK

◆ UNIT: mm

用途: 用于  $\varnothing 6.35 \sim \varnothing 7.0$  之木板、铁板、PC 板... 等板子间的结合固定。

LMB048 结构图



PART NO	A	B	C	D	MOUNTING HOLE	PANEL THICKNESS	PACKAGE
LMB048	18.5	2.0	11.0	13.0	6.35	0.8~7.4	1000





## 塑料铆钉

PART NO: LMB049

◆ MATERIAL: NYLON 66 (UL)

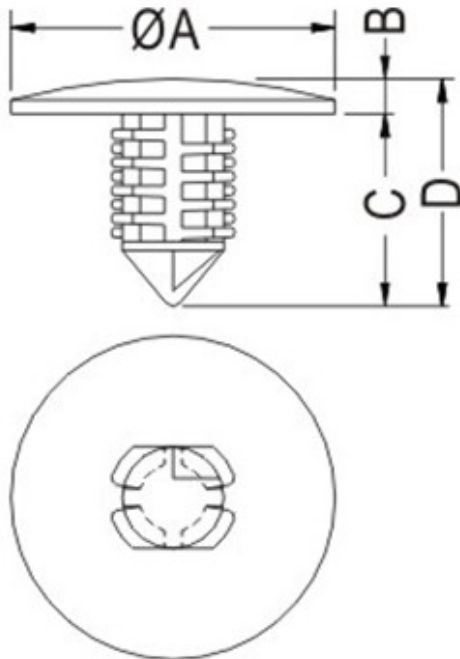
◆ FLAME CLASS: 94V-2

◆ COLOR: BLACK

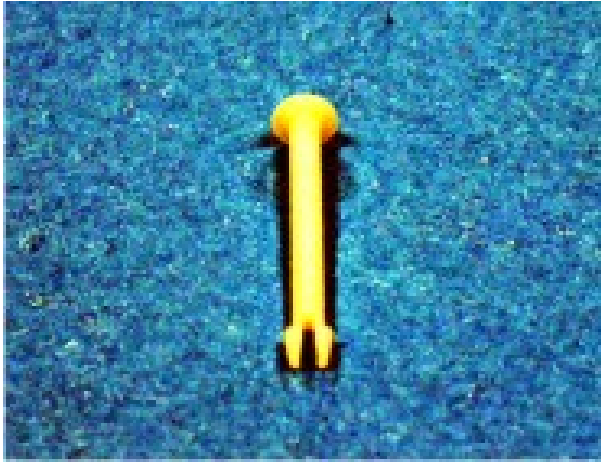
◆ UNIT: mm

用途: 用于  $\varnothing 6.35 \sim \varnothing 7.0$  之木板、铁板、PC 板... 等板子间的结合固定。

LMB049 结构图



PART NO	A	B	C	D	MOUNTING HOLE	PANEL THICKNESS	PACKAGE
LMB049	25.4	3.0	20.0	23.0	7.0	2.54~20	1000



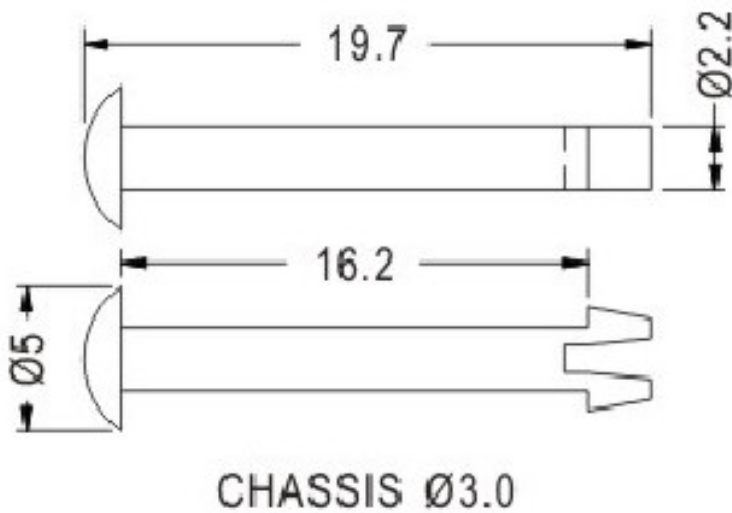
塑料铆钉

PART NO: LMB050

- ◆ MATERIAL: NYLON 66 (UL)
- ◆ FLAME CLASS: 94V-2
- ◆ COLOR: NATURAL/BLACK
- ◆ UNIT: mm

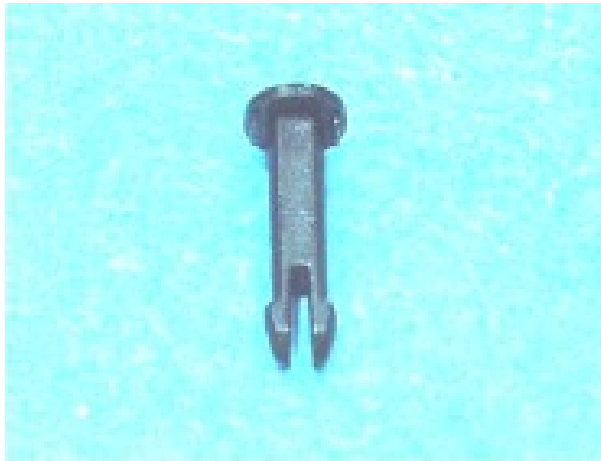
用途: 用于  $\varnothing 3$  机板间之固定, 使用方便。

LMB050 结构图



**PART NO**  
LMB050

**PACKAGE**  
1000



塑料铆钉

PART NO: LMB051

◆ MATERIAL: NYLON 66 (UL)

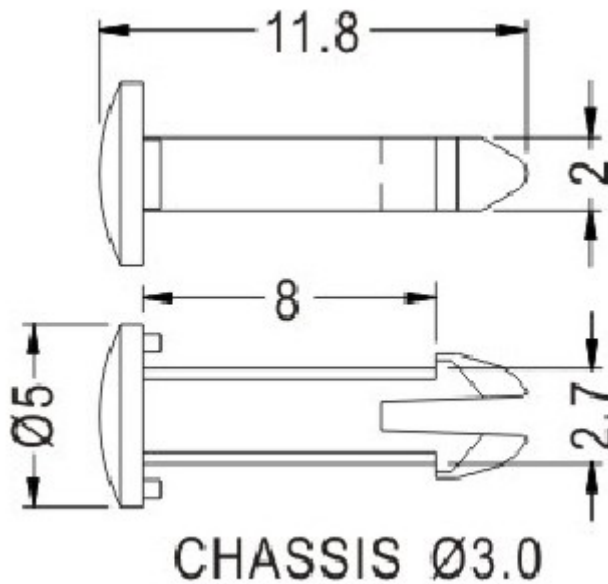
◆ FLAME CLASS: 94V-2

◆ COLOR: NATURAL/BLACK

◆ UNIT: mm

用途: 用于  $\varnothing 3$  机板间之固定, 使用方便。

LMB051 结构图

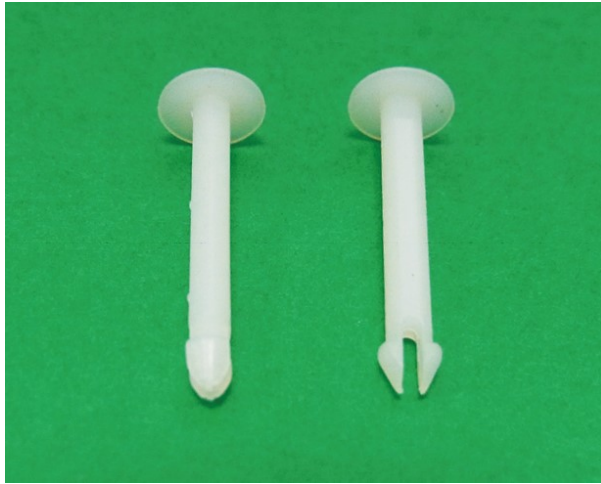


**PART NO**

LMB051

**PACKAGE**

1000



塑料铆钉

PART NO: LMB052

◆ MATERIAL: NYLON 66 (UL)

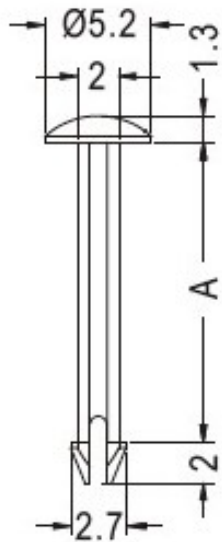
◆ FLAME CLASS: 94V-2

◆ COLOR: NATURAL

◆ UNIT: mm

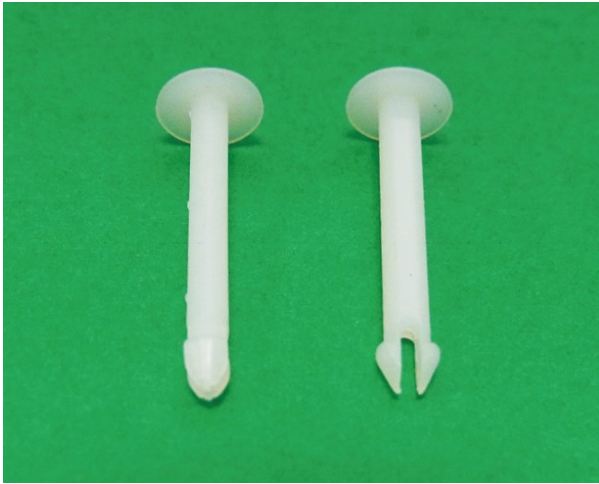
用途: 用于机板间之固定, 使用方便。

LMB052 结构图



MOUNTING HOLE Ø2.3

PART NO	A	PACKAGE
LMB052	8.1	1000



塑料铆钉

PART NO: LMB053

◆ MATERIAL: NYLON 66 (UL)

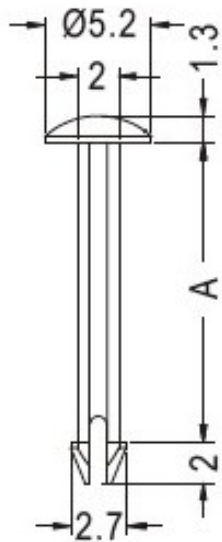
◆ FLAME CLASS: 94V-2

◆ COLOR: NATURAL

◆ UNIT: mm

用途: 用于机板间之固定, 使用方便。

LMB053 结构图



MOUNTING HOLE Ø2.3

PART NO	A	PACKAGE
LMB053	14.5	1000



塑料铆钉

PART NO: LMB054

◆ MATERIAL: NYLON 66 (UL)

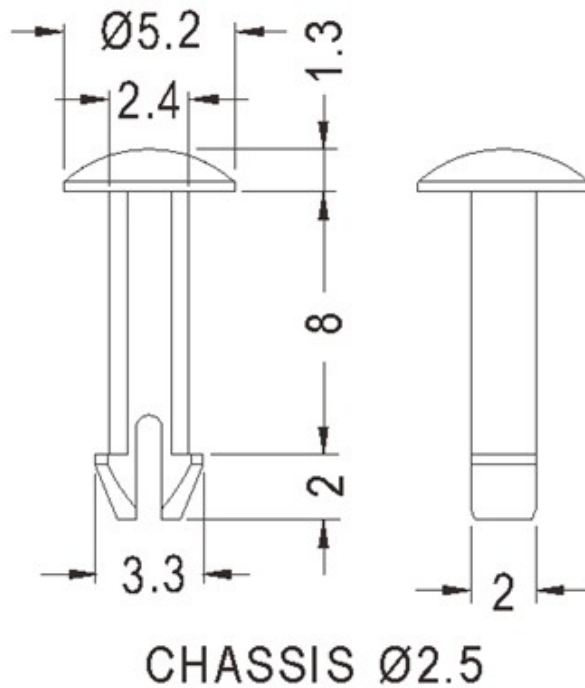
◆ FLAME CLASS: 94V-2

◆ COLOR: NATURAL

◆ UNIT: mm

用途: 用于  $\text{Ø}2.5$  机板间之固定, 使用方便。

LMB054 结构图



**PART NO**  
LMB054

**PACKAGE**  
1000



塑料铆钉

PART NO: LMB055

◆ MATERIAL: NYLON 66 (UL)

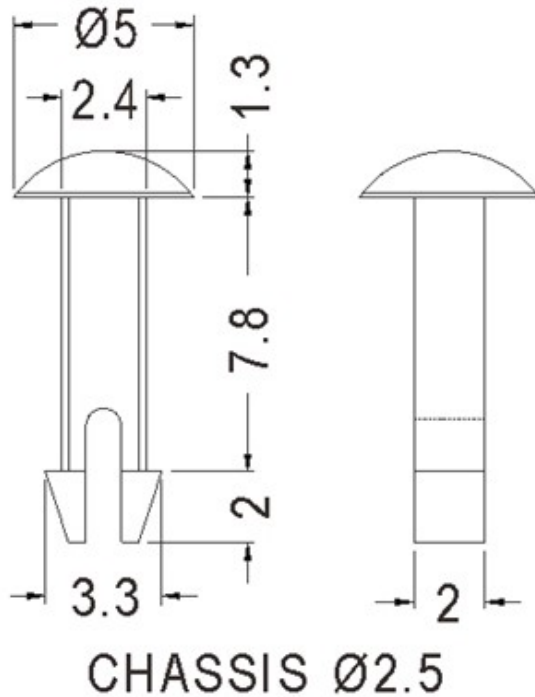
◆ FLAME CLASS: 94V-2

◆ COLOR: NATURAL

◆ UNIT: mm

用途: 用于  $\varnothing 2.5$  机板间之固定, 使用方便。

LMB055 结构图

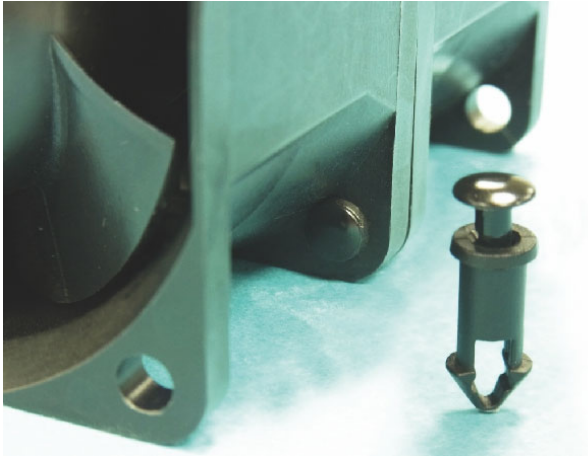


**PART NO**

LMB055

**PACKAGE**

1000



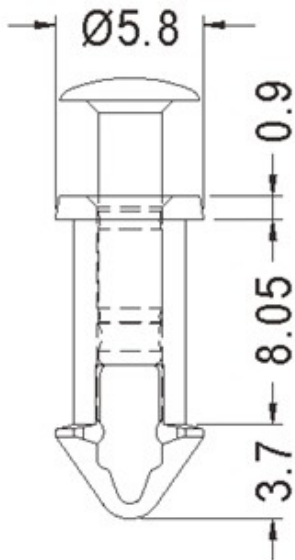
塑料铆钉

PART NO: LMB056

- ◆ MATERIAL: NYLON 66 (UL)
- ◆ FLAME CLASS: 94V-2
- ◆ COLOR: BLACK
- ◆ UNIT: mm
- ◆ 专利品 (P.A.T)

用途: 用于风扇铆钉之固定。

LMB056 结构图



MOUNTING HOLE  $\text{Ø}4.4\sim 4.5$   
THICKNESS 8.0

**PART NO**  
LMB056

**PACKAGE**  
1000