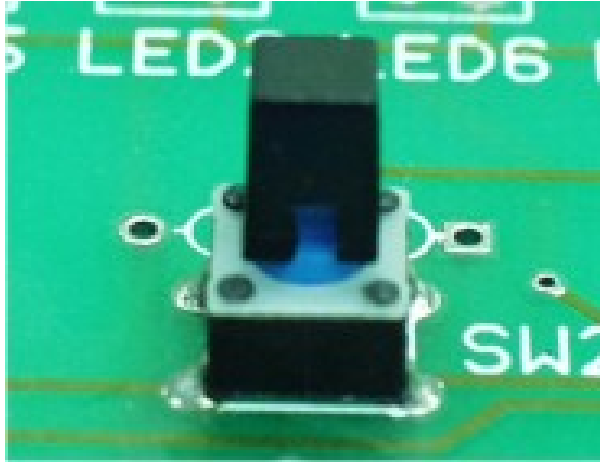


帽盖



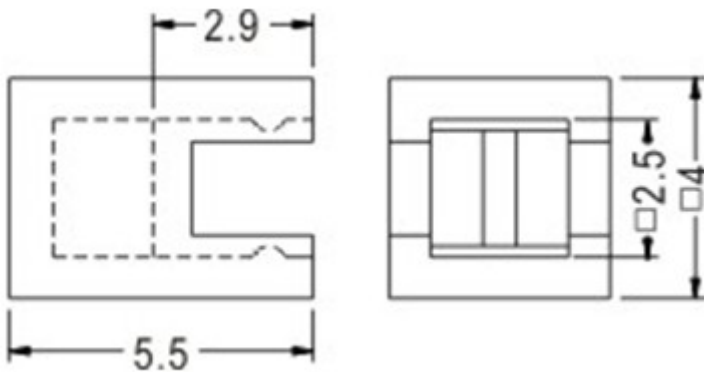
帽盖

PART NO: LTSS-1

- ◆ MATERIAL:ABS (UL)
- ◆ FLAME CLASS:94HB
- ◆ COLOR:BLACK
- ◆ UINIT:mm

用途：用于 TACT 开关之帽盖。

LTSS-1 结构图

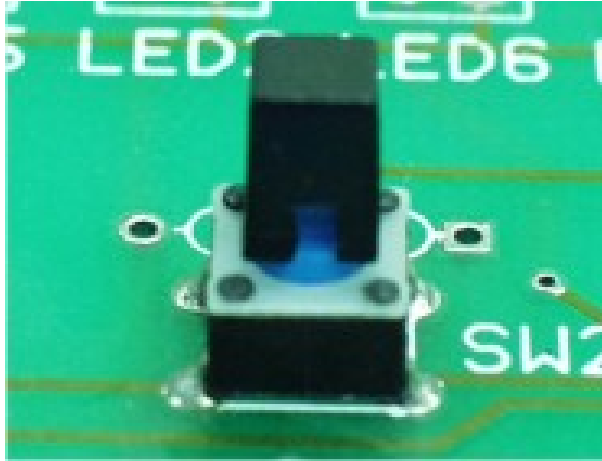


PART NO

LTSS-1

PACKAGE

1000



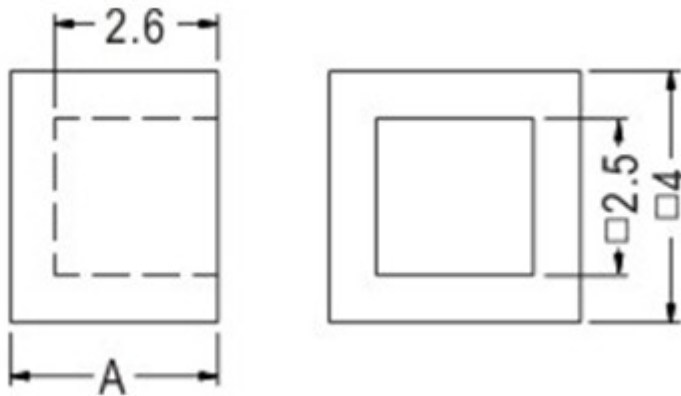
帽盖

PART NO: LTSS-2

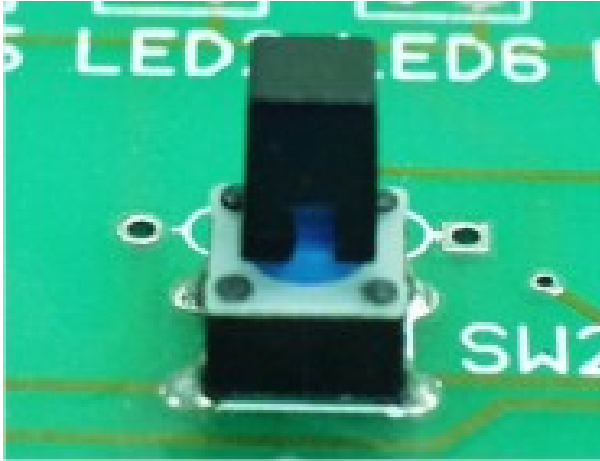
- ◆ MATERIAL:ABS (UL)
- ◆ FLAME CLASS:94HB
- ◆ COLOR:BLACK
- ◆ UINIT:mm

用途：用于 TACT 开关之帽盖。

LTSS-2 结构图



PART NO	A	PACKAGE
LTSS-2	3.3	2000



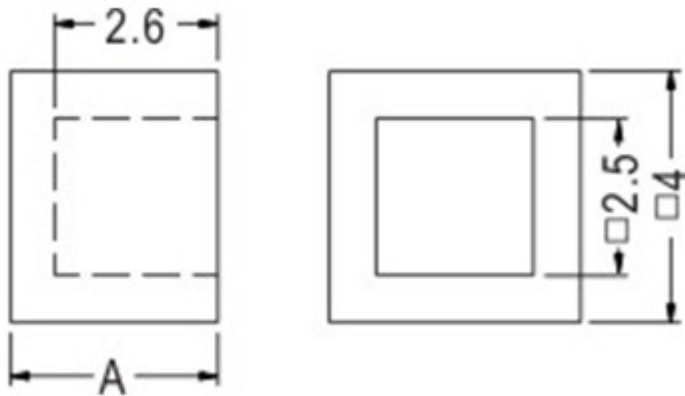
帽盖

PART NO: LTSS-3

- ◆ MATERIAL:ABS (UL)
- ◆ FLAME CLASS:94HB
- ◆ COLOR:BLACK
- ◆ UINIT:mm

用途：用于 TACT 开关之帽盖。

LTSS-3 结构图



PART NO

LTSS-3

A

4.0

PACKAGE

2000



帽盖

PART NO: LTSS-4

◆ MATERIAL:ABS (UL)

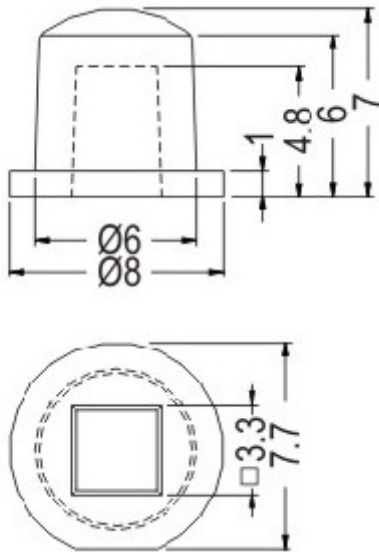
◆ FLAME CLASS:94HB

◆ COLOR:BLACK

◆ UINIT:mm

用途：用于 TACT 开关之帽盖。

LTSS-4 结构图



PART NO

LTSS-4

PACKAGE

1000



帽盖

PART NO: LTSS-5

◆ MATERIAL:ABS (UL)

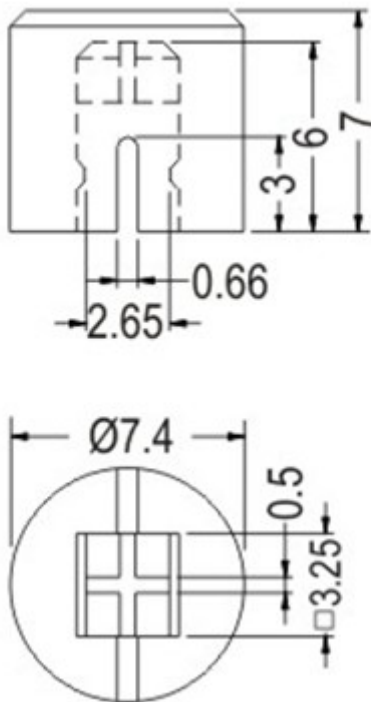
◆ FLAME CLASS:94HB

◆ COLOR:BLACK

◆ UINIT:mm

用途：用于 TACT 开关之帽盖。

LTSS-5 结构图

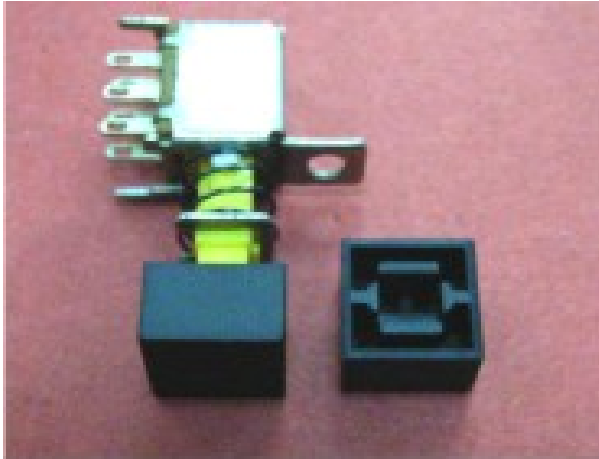


PART NO

LTSS-5

PACKAGE

1000



帽盖

PART NO: LTSS-6

◆ MATERIAL:ABS (UL)

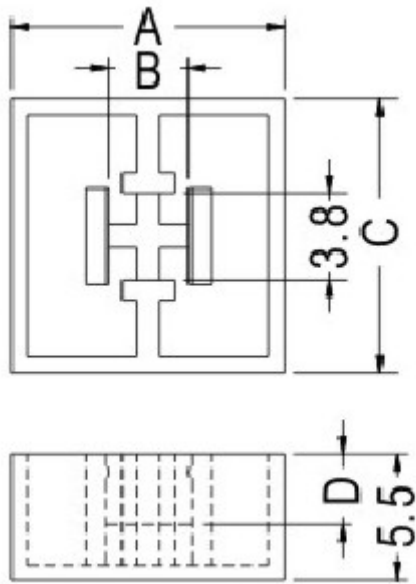
◆ FLAME CLASS:94HB

◆ COLOR:BLACK

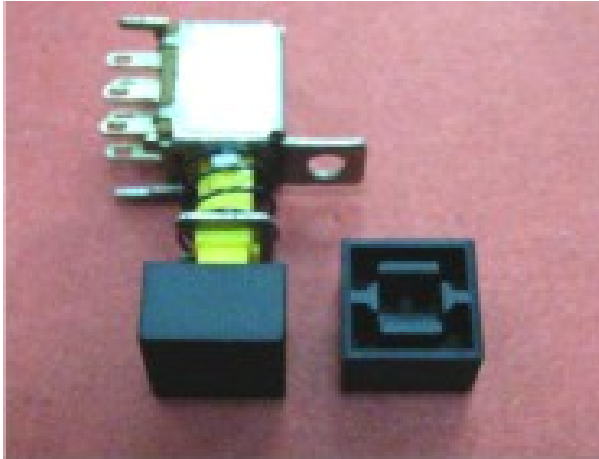
◆ UINIT:mm

用途：用于 TACT 开关之帽盖。

LTSS-6 结构图



PART NO	A	B	C	D	PACKAGE
LTSS-6	12.0	3.5	12.0	3.1	1000



帽盖

PART NO: LTSS-7

◆ MATERIAL:ABS (UL)

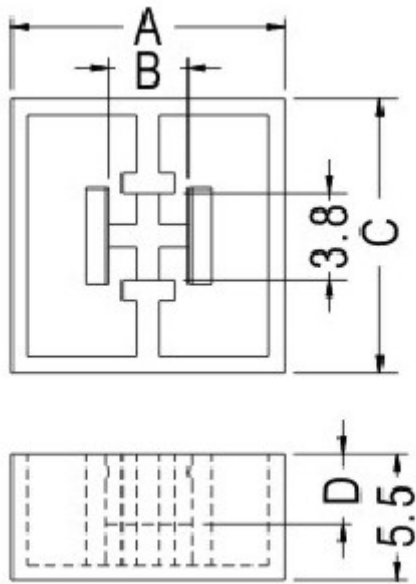
◆ FLAME CLASS:94HB

◆ COLOR:BLACK

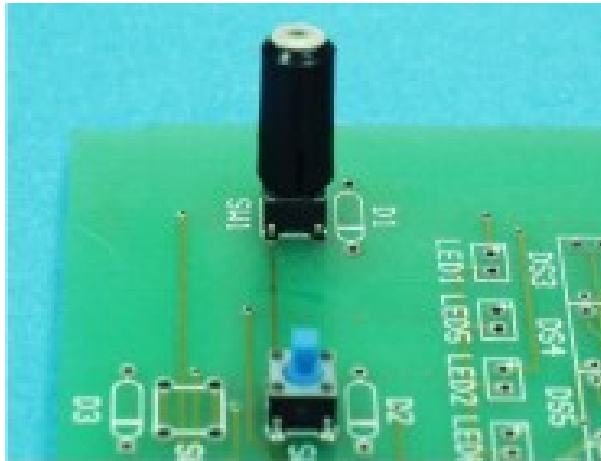
◆ UINIT:mm

用途：用于 TACT 开关之帽盖。

LTSS-7 结构图



PART NO	A	B	C	D	PACKAGE
LTSS-7	9.0	3.8	9.0	2.8	1000



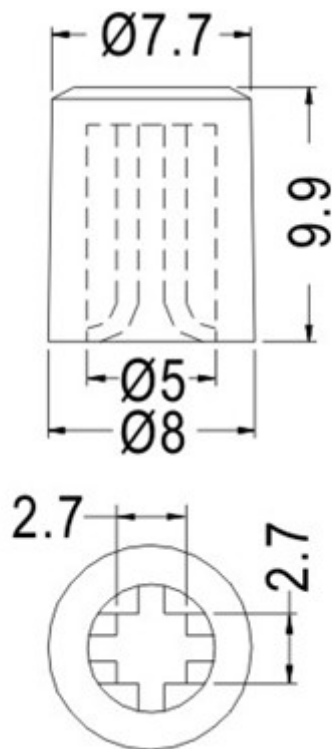
帽盖

PART NO: LTSS-8

- ◆ MATERIAL: NYLON 66 (UL)
- ◆ FLAME CLASS: 94HB/94V-2
- ◆ COLOR: BLACK
- ◆ UINIT: mm

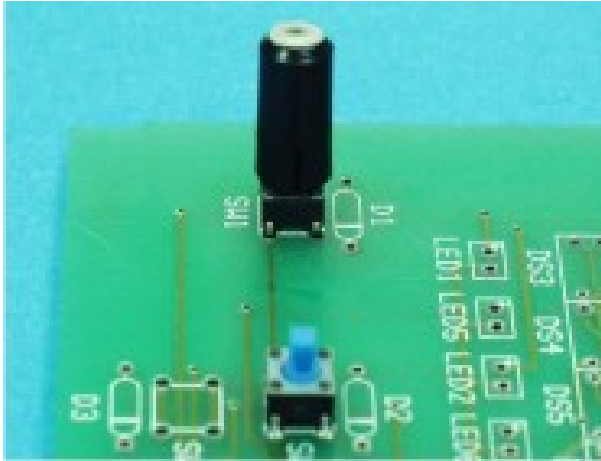
用途: 用于 TACT 开关之帽盖。

LTSS-8 结构图



PART NO
LTSS-8

PACKAGE
1000



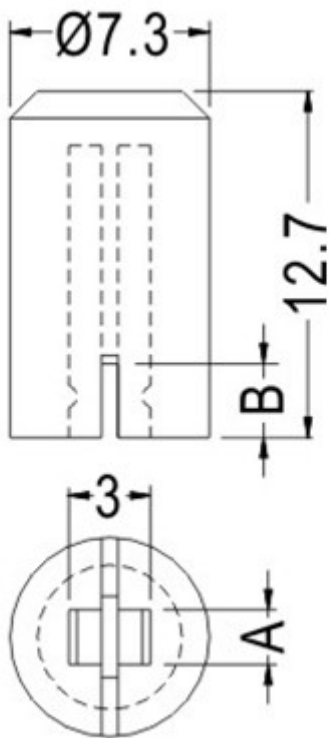
帽盖

PART NO: LTSS-9

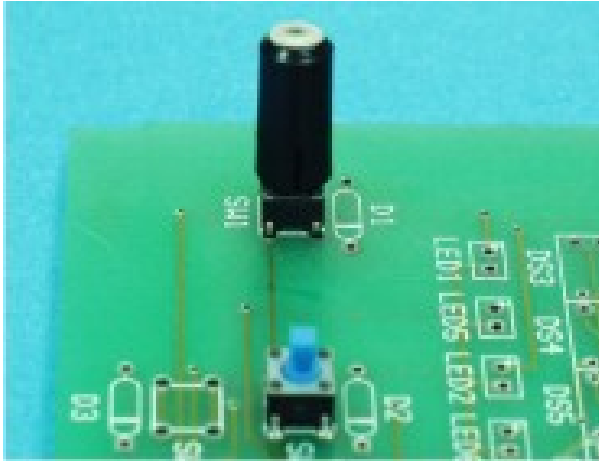
- ◆ MATERIAL: NYLON 66 (UL)
- ◆ FLAME CLASS: 94HB/94V-2
- ◆ COLOR: BLACK
- ◆ UINIT: mm

用途: 用于 TACT 开关之帽盖。

LTSS-9 结构图



PART NO	A	B	C	PACKAGE
LTSS-9	12.7	3.0	2.0	1000



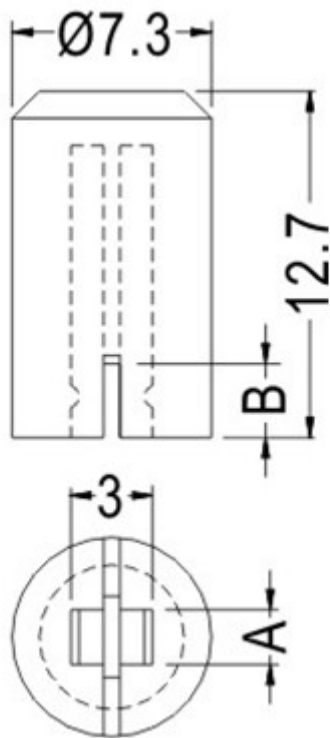
帽盖

PART NO: LTSS-10

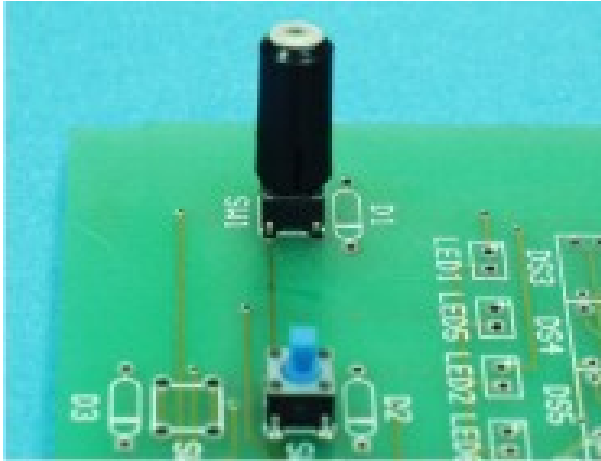
- ◆ MATERIAL: NYLON 66 (UL)
- ◆ FLAME CLASS: 94HB/94V-2
- ◆ COLOR: BLACK
- ◆ UINIT: mm

用途: 用于 TACT 开关之帽盖。

LTSS-10 结构图



PART NO	A	B	C	PACKAGE
LTSS-10	12.7	4.2	3.0	1000



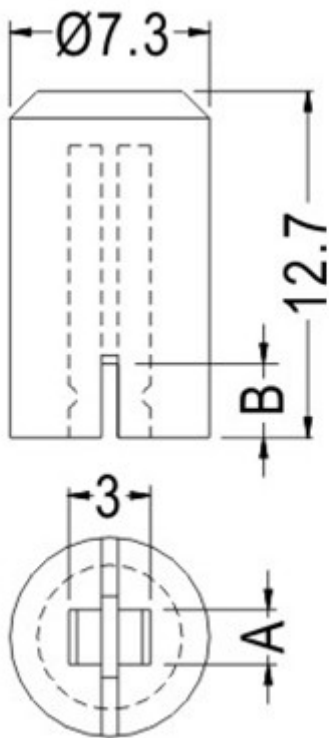
帽盖

PART NO: LTSS-11

- ◆ MATERIAL: NYLON 66 (UL)
- ◆ FLAME CLASS: 94HB/94V-2
- ◆ COLOR: BLACK
- ◆ UINIT: mm

用途: 用于 TACT 开关之帽盖。

LTSS-11 结构图



PART NO	A	B	C	PACKAGE
LTSS-11	11.6	3.0	2.0	1000