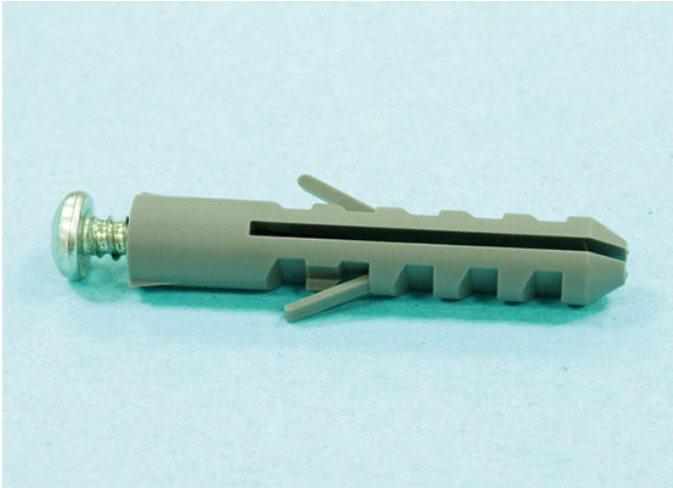


# 南京诺金电气有限公司

## Nanjing Nowking Electric Co., Ltd

螺丝固定座/膨胀螺丝样本



产品名称: 螺丝固定座/膨胀螺丝

规格型号: LESS-01

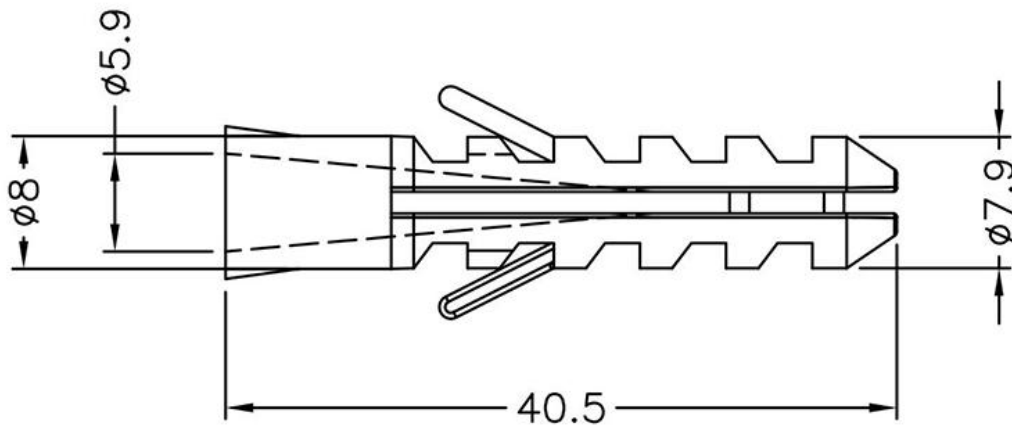
◆ MATERIAL: PP

◆ COLOR: GRAY

◆ UNIT: mm

用途: 用于螺丝与墙壁固定, 结合力强。

LESS-01 结构图



	PART NO	PACKAGE
	LESS-01	1000

# 南京诺金电气有限公司

## Nanjing Nowking Electric Co., Ltd



产品名称：螺丝固定座/膨胀螺丝

规格型号：LESS-02

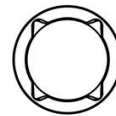
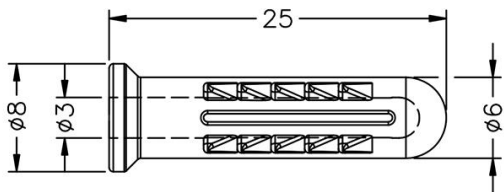
◆ MATERIAL: PP, PE

◆ COLOR: NATURAL, WHITE

◆ UNIT: mm

用途：用于螺丝与墙壁固定，结合力强。

LESS-02 结构图



	PART NO	PACKAGE
	LESS-02	1000

# 南京诺金电气有限公司

## Nanjing Nowking Electric Co., Ltd



产品名称: 螺丝固定座/膨胀螺丝

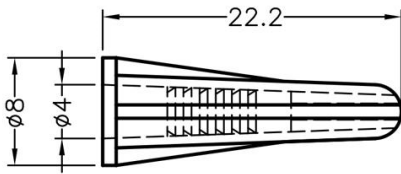
规格型号: LESS-03

- ◆ MATERIAL: NYLON 66(UL)
- ◆ FLAME CLASS: 94V-0, 94V-2
- ◆ COLOR: NATURAL, BLACK
- ◆ UNIT: mm

用途: 用于螺丝与墙壁固定, 结合力强。

DRILL SIZE:  $\varnothing 4.8$

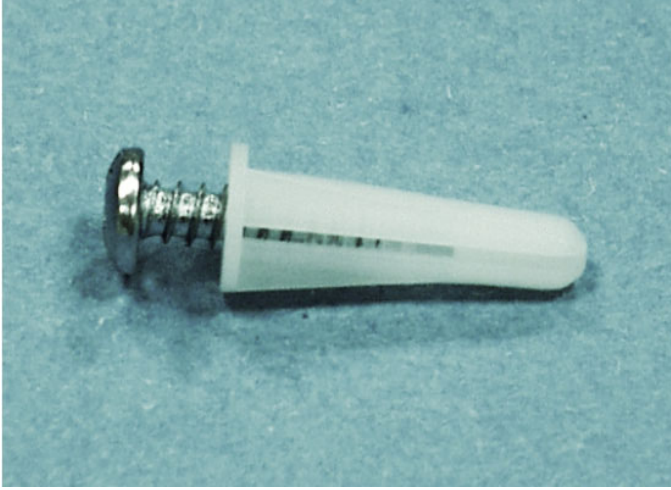
LESS-03 结构图



	PART NO	PACKAGE
	LESS-03	1000

# 南京诺金电气有限公司

## Nanjing Nowking Electric Co., Ltd



产品名称：螺丝固定座/膨胀螺丝

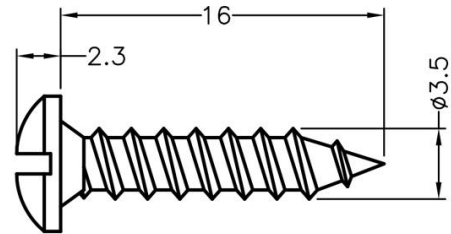
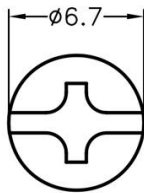
规格型号：LESS-04

◆MATERIAL: STEEL

◆UNIT: mm

用途：用于螺丝与墙壁固定，结合力强。

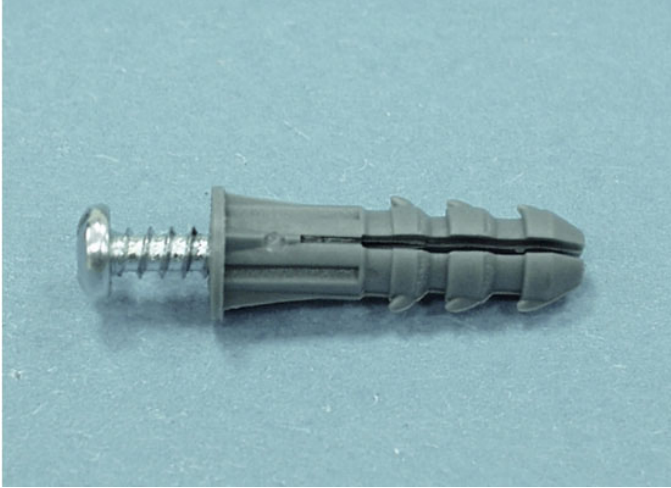
LESS-04 结构图



	PART NO	PACKAGE
	LESS-04	1000

# 南京诺金电气有限公司

## Nanjing Nowking Electric Co., Ltd



产品名称: 螺丝固定座/膨胀螺丝

规格型号: LESS-05

◆ MATERIAL: PP

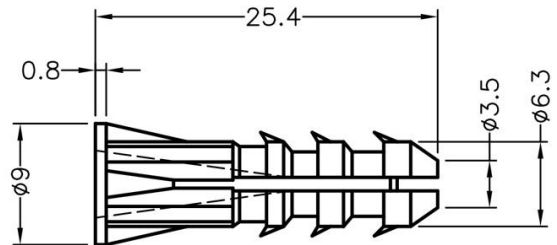
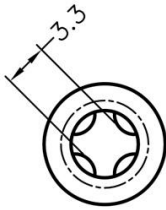
◆ COLOR: GRAY, BLACK

◆ UNIT: mm

用途: 用于螺丝与墙壁固定, 结合力强。

DRILL SIZE:  $\varnothing 6.3$

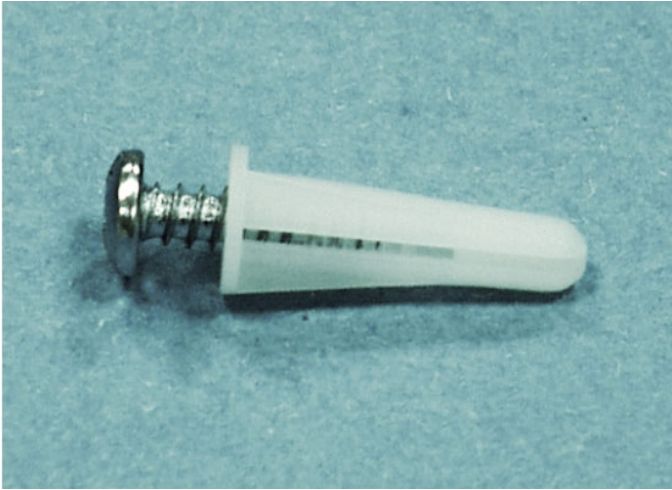
LESS-05 结构图



	PART NO	PACKAGE
	LESS-05	1000

# 南京诺金电气有限公司

## Nanjing Nowking Electric Co., Ltd



产品名称: 螺丝固定座/膨胀螺丝

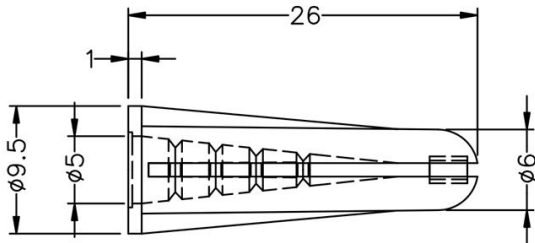
规格型号: LESS-06

- ◆ MATERIAL: NYLON 66(UL)
- ◆ FLAME CLASS: 94V-0, 94V-2
- ◆ COLOR: NATURAL, BLACK
- ◆ UNIT: mm

用途: 用于螺丝与墙壁固定, 结合力强。

DRILL SIZE:  $\varnothing 6.3$

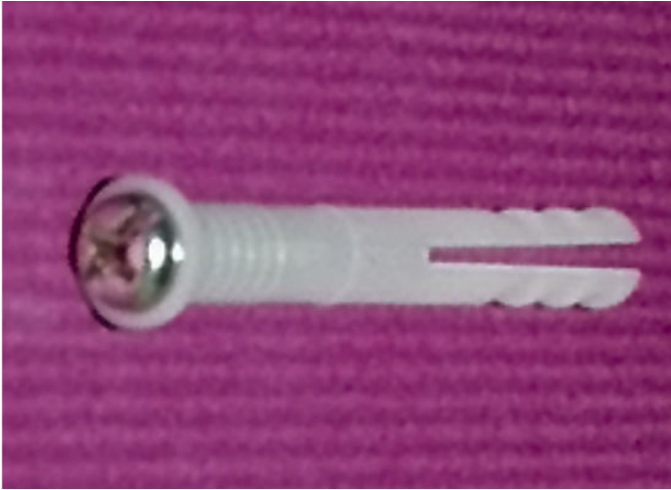
LESS-06 结构图



	PART NO	PACKAGE
	LESS-06	1000

# 南京诺金电气有限公司

## Nanjing Nowking Electric Co., Ltd



产品名称: 螺丝固定座/膨胀螺丝

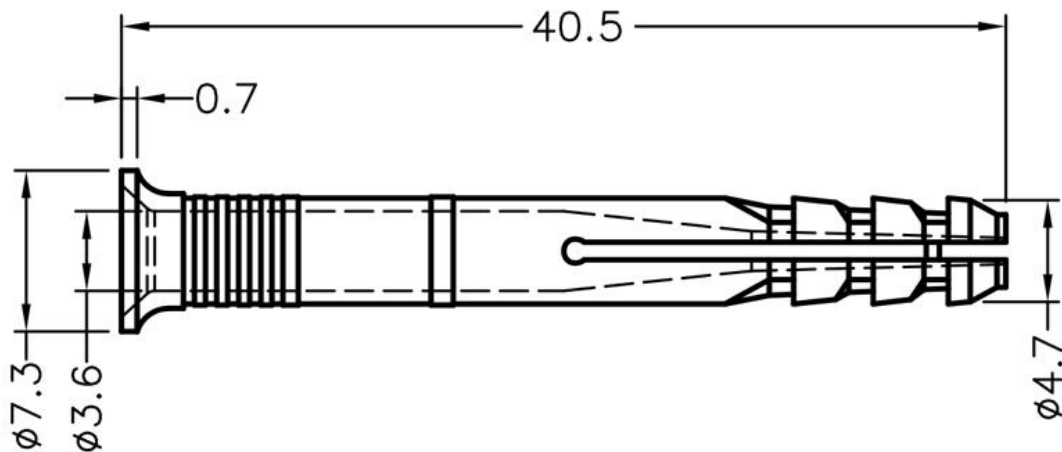
规格型号: LESS-07

- ◆ MATERIAL: NYLON 66(UL)
- ◆ FLAME CLASS: 94V-0, 94V-2
- ◆ COLOR: NATURAL, BLACK
- ◆ UNIT: mm

用途: 用于螺丝与墙壁固定, 结合力强。

DRILL SIZE:  $\varnothing 4.8$

LESS-07 结构图

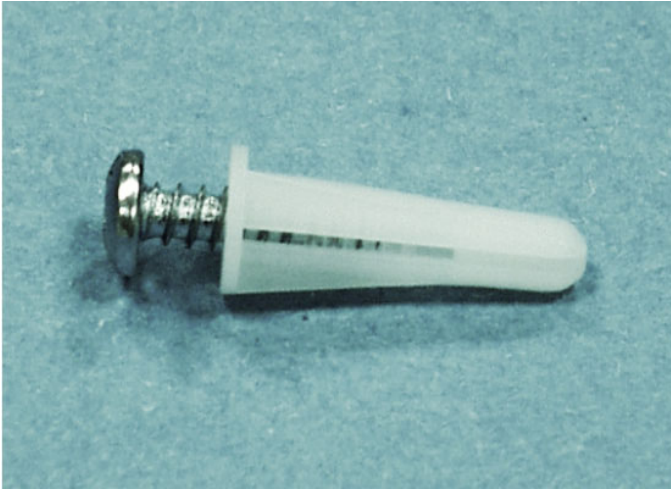


	PART NO	PACKAGE
	LESS-07	1000



# 南京诺金电气有限公司

## Nanjing Nowking Electric Co., Ltd



产品名称: 螺丝固定座/膨胀螺丝

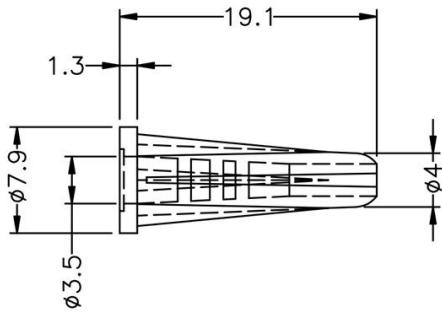
规格型号: LESS-08

- ◆ MATERIAL: NYLON 66(UL)
- ◆ FLAME CLASS: 94V-0, 94V-2
- ◆ COLOR: NATURAL, BLACK
- ◆ UNIT: mm

用途: 用于螺丝与墙壁固定, 结合力强。

DRILL SIZE:  $\varnothing 4.8$

LESS-08 结构图

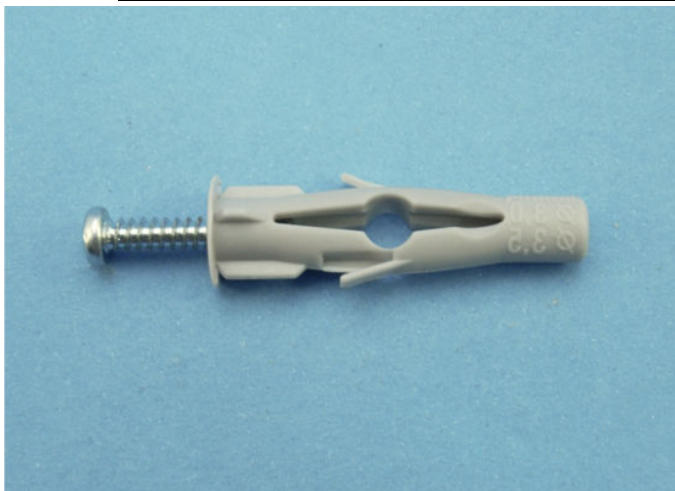


	PART NO	PACKAGE
	LESS-08	1000



# 南京诺金电气有限公司

## Nanjing Nowking Electric Co., Ltd



产品名称: 螺丝固定座/膨胀螺丝

规格型号: LESS-09

◆ MATERIAL: NYLON 66(UL)

◆ FLAME CLASS: 94V-0,94V-2

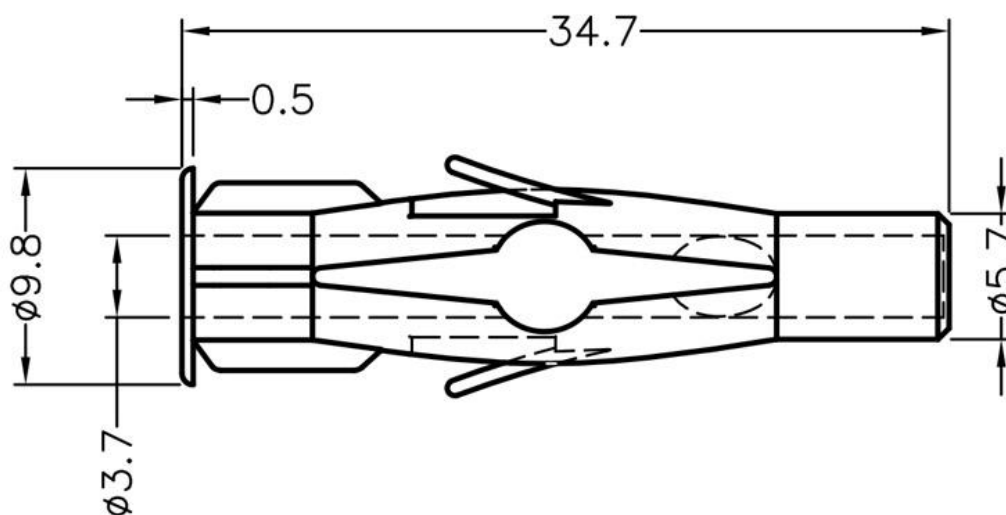
◆ COLOR: NATURAL, BLACK, GRAY

◆ UNIT: mm

用途: 用于螺丝与墙壁固定, 结合力强。

DRILL SIZE:  $\varnothing 6.3$

LESS-09 结构图



	PART NO	PACKAGE
	LESS-09	1000

# 南京诺金电气有限公司

## Nanjing Nowking Electric Co., Ltd



产品名称: 螺丝固定座/膨胀螺丝

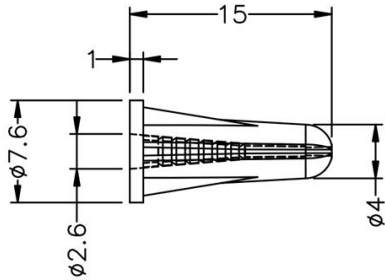
规格型号: LESS-10

- ◆ MATERIAL: NYLON 66(UL)
- ◆ FLAME CLASS: 94V-0,94V-2
- ◆ COLOR: NATURAL, BLACK
- ◆ UNIT: mm

用途: 用于螺丝与墙壁固定, 结合力强。

DRILL SIZE:  $\varnothing$  4.8

LESS-10 结构图



	PART NO	PACKAGE
	LESS-10	1000

# 南京诺金电气有限公司

## Nanjing Nowking Electric Co., Ltd



产品名称: 螺丝固定座/膨胀螺丝

规格型号: LESS-11

◆ MATERIAL: PP

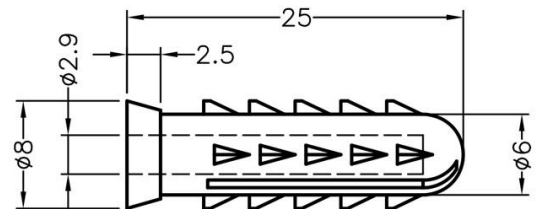
◆ COLOR: NATURAL

◆ UNIT: mm

用途: 用于螺丝与墙壁固定, 结合力强。

DRILL SIZE: Ø6.3

LESS-11 结构图



	PART NO	PACKAGE
	LESS-11	1000

# 南京诺金电气有限公司

## Nanjing Nowking Electric Co., Ltd



产品名称：螺丝固定座/膨胀螺丝

规格型号：LESS-12

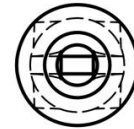
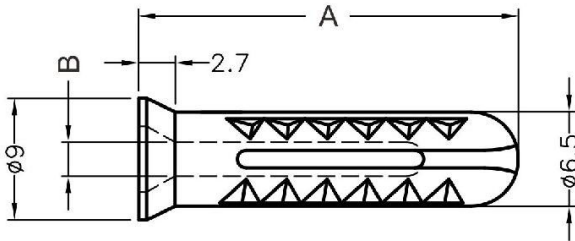
◆ MATERIAL: PP

◆ COLOR: NATURAL

◆ UNIT: mm

用途：用于螺丝与墙壁固定，结合力强。

LESS-12 结构图



PART NO	A	B	PACKAGE
LESS-12	28.1	2.5	1000

# 南京诺金电气有限公司

## Nanjing Nowking Electric Co., Ltd



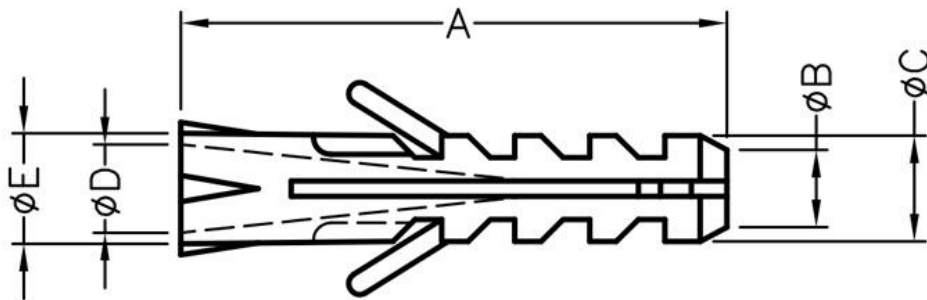
产品名称：螺丝固定座/膨胀螺丝

规格型号：LESS-13

- ◆ MATERIAL: NYLON 66(UL), PP
- ◆ FLAME CLASS: 94V-0, 94V-2, 94HB
- ◆ COLOR: NATURAL, BLACK, GRAY, WHITE
- ◆ UNIT: mm

用途：用于螺丝与墙壁固定，结合力强。

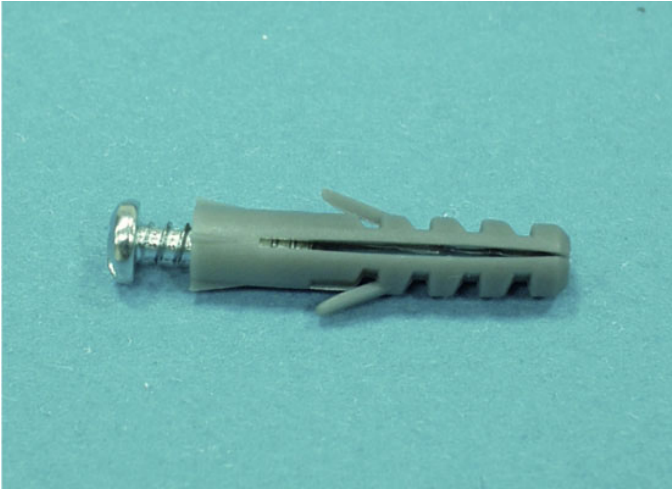
LESS-13 结构图



PART NO	A	B	C	D	E	PACKAGE
LESS-13	20.1	2.8	4.0	2.9	4.0	1000

# 南京诺金电气有限公司

## Nanjing Nowking Electric Co., Ltd



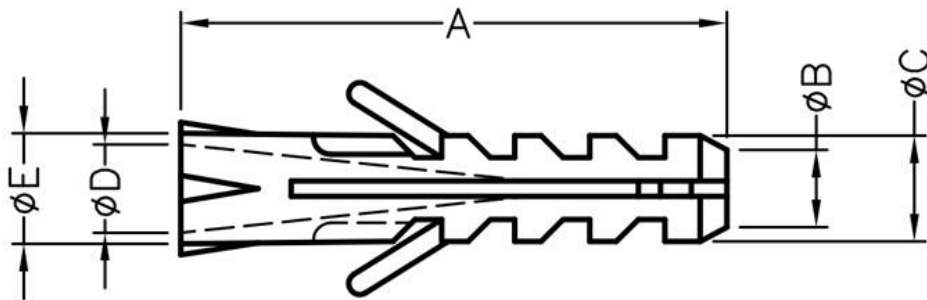
产品名称：螺丝固定座/膨胀螺丝

规格型号：LESS-14

- ◆ MATERIAL: NYLON 66(UL), PP
- ◆ FLAME CLASS: 94V-0, 94V-2, 94HB
- ◆ COLOR: NATURAL, BLACK, GRAY, WHITE
- ◆ UNIT: mm

用途：用于螺丝与墙壁固定，结合力强。

LESS-14 结构图



PART NO	A	B	C	D	E	PACKAGE
LESS-14	24.7	3.5	4.8	4.0	5.0	1000

# 南京诺金电气有限公司

## Nanjing Nowking Electric Co., Ltd



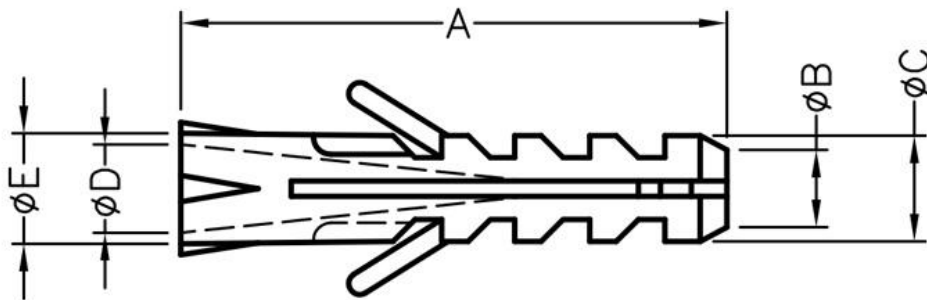
产品名称：螺丝固定座/膨胀螺丝

规格型号：LESS-15

- ◆ MATERIAL: NYLON 66(UL), PP
- ◆ FLAME CLASS: 94V-0, 94V-2, 94HB
- ◆ COLOR: NATURAL, BLACK, GRAY, WHITE
- ◆ UNIT: mm

用途：用于螺丝与墙壁固定，结合力强。

LESS-15 结构图

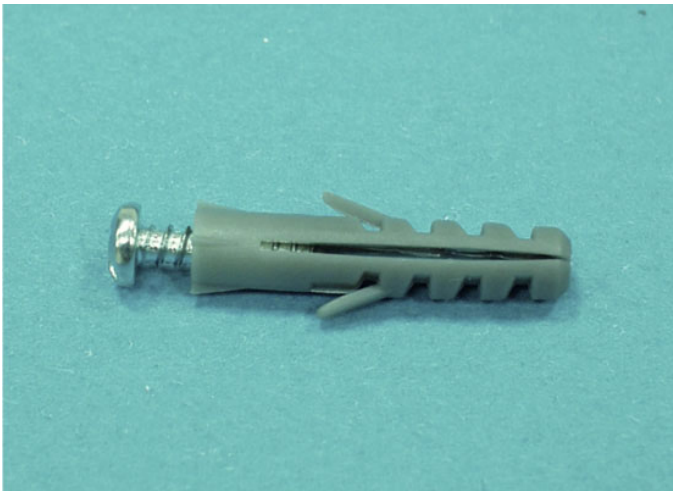


PART NO	A	B	C	D	E	PACKAGE
LESS-15	29.6	4.0	6.0	4.8	6.0	1000



# 南京诺金电气有限公司

## Nanjing Nowking Electric Co., Ltd



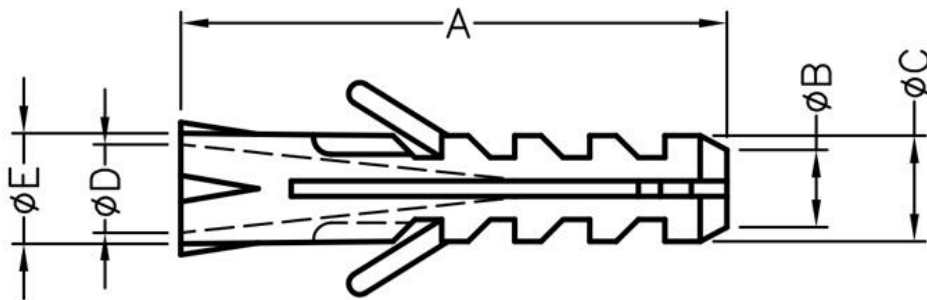
产品名称：螺丝固定座/膨胀螺丝

规格型号：LESS-16

- ◆ MATERIAL: NYLON 66(UL), PP
- ◆ FLAME CLASS: 94V-0, 94V-2, 94HB
- ◆ COLOR: NATURAL, BLACK, GRAY, WHITE
- ◆ UNIT: mm

用途：用于螺丝与墙壁固定，结合力强。

LESS-16 结构图



PART NO	A	B	C	D	E	PACKAGE
LESS-16	29.6	3.5	6.0	4.0	6.0	1000

# 南京诺金电气有限公司

## Nanjing Nowking Electric Co., Ltd



产品名称：螺丝固定座/膨胀螺丝

规格型号：LESS-17

◆ MATERIAL:PP

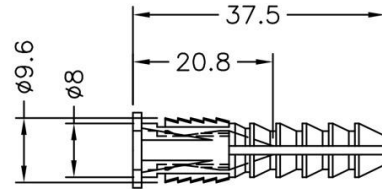
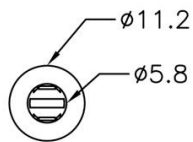
◆ COLOR:YELLOW

◆ UNIT: mm

用途：用于螺丝与墙壁固定，结合力强。

可与 STP5-32 自攻螺丝配合使用

LESS-17 结构图



	PART NO	PACKAGE
	LESS-17	1000

# 南京诺金电气有限公司

## Nanjing Nowking Electric Co., Ltd



产品名称：螺丝固定座/膨胀螺丝

规格型号：LESS-18

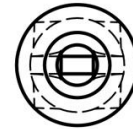
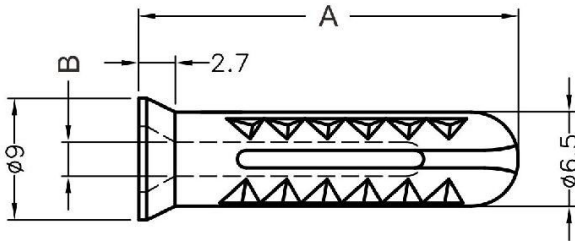
◆ MATERIAL: PP

◆ COLOR: NATURAL

◆ UNIT: mm

用途：用于螺丝与墙壁固定，结合力强。

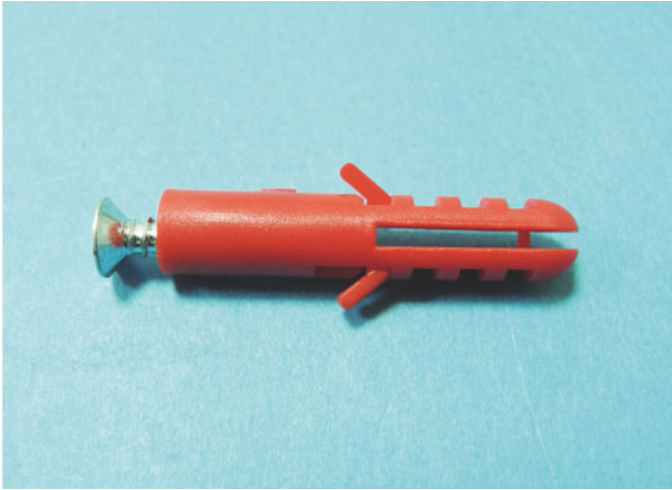
LESS-18 结构图



PART NO	A	B	PACKAGE
LESS-18	30.0	3.1	1000

# 南京诺金电气有限公司

## Nanjing Nowking Electric Co., Ltd



产品名称: 螺丝固定座/膨胀螺丝

规格型号: LESS-19

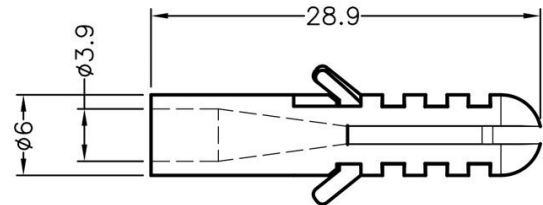
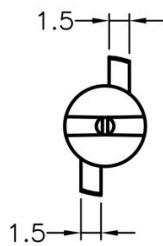
◆ MATERIAL: PP

◆ COLOR: RED

◆ UNIT: mm

用途: 用于螺丝与墙壁固定, 结合力强。

LESS-19 结构图



MOUNTING HOLE  $\phi 6.35$

	PART NO	PACKAGE
	LESS-19	1000

