

南京诺金电气有限公司

Nanjing Nowking Electric Co., Ltd

扣式塞头样本



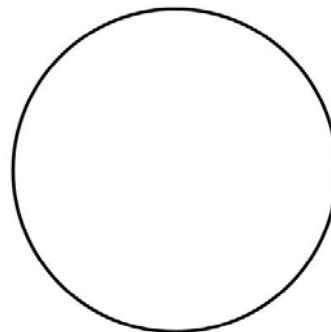
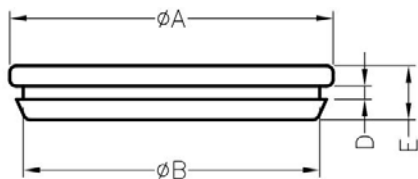
产品名称：扣式塞头

规格型号：KMX-01

- ◆ MATERIAL:TPE
- ◆ COLOR: WHITE,BLACK
- ◆ UNIT: mm

用途：可将多余的机壳出线口遮盖，装配容易。

KMX-01 结构图



| PART NO | A | B | D | E | PACKAGE |
|---------|------|------|-----|-----|---------|
| KMX-01 | 24.0 | 22.0 | 1.0 | 4.0 | 1000 |

南京诺金电气有限公司

Nanjing Nowking Electric Co., Ltd



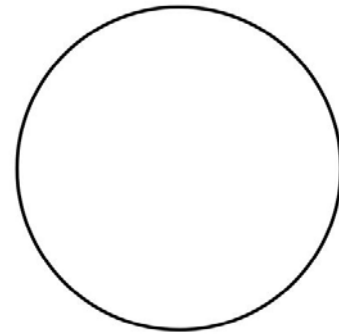
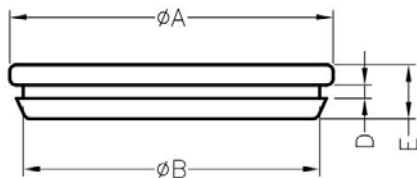
产品名称：扣式塞头

规格型号：KMX-02

- ◆ MATERIAL: TPE
- ◆ COLOR: WHITE, BLACK
- ◆ UNIT: mm

用途：可将多余的机壳出线口遮盖，装配容易。

KMX-02 结构图



| PART NO | A | B | D | E | PACKAGE |
|---------|------|------|-----|-----|---------|
| KMX-02 | 16.0 | 13.0 | 1.0 | 3.5 | 1000 |

南京诺金电气有限公司

Nanjing Nowking Electric Co., Ltd



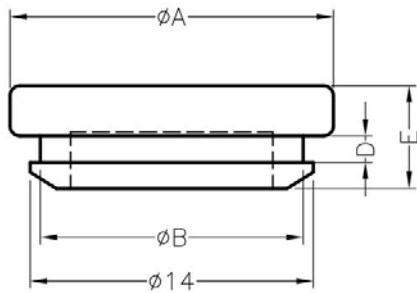
产品名称：扣式塞头

规格型号：KMX-03

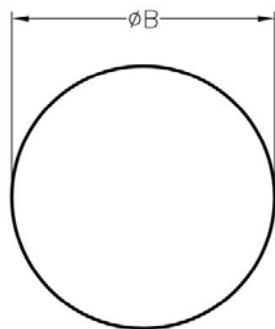
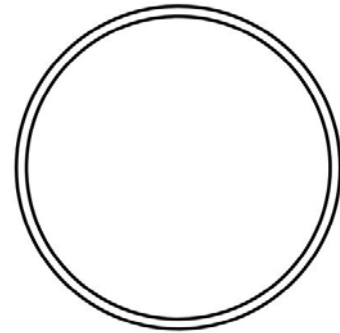
- ◆ MATERIAL: TPE
- ◆ COLOR: NATURAL, BLACK
- ◆ UNIT: mm

用途：可将多余的机壳出线口遮盖，装配容易。

KMX-03 结构图



CHASSIS THICKNESS F



MOUNTING HOLE

| PART NO | A | B | D | E | F | PACKAGE |
|---------|------|------|-----|-----|---------|---------|
| KMX-03 | 16.0 | 13.0 | 1.3 | 5.1 | 1.0~1.2 | 1000 |

总机/TEL: +86 25 85437901 85422485 85436028
[Http://www.nowking.com](http://www.nowking.com) E-mail: nk@nowking.com
 QQ: 260678075 WeChat: 13770725488

南京诺金电气有限公司

Nanjing Nowking Electric Co., Ltd



产品名称：扣式塞头

规格型号：KMX-04

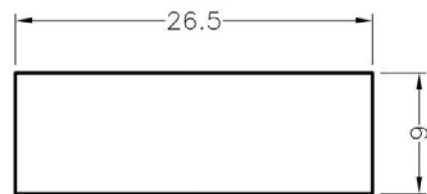
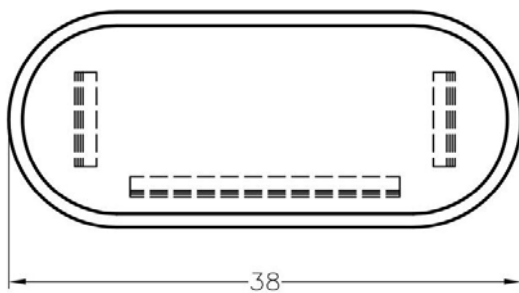
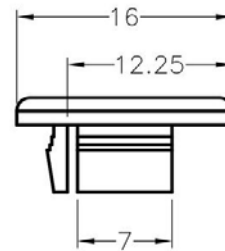
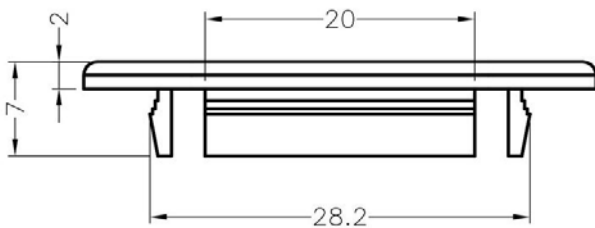
◆ MATERIAL: TPE

◆ COLOR: BLACK

◆ UNIT: mm

用途：可将多余的机壳出线口遮盖，装配容易。

KMX-04 结构图



MOUNTING HOLE
THICKNESS 0.6~1.2mm

| PART NO | | PACKAGE |
|---------|--|---------|
| KMX-04 | | 500 |

南京诺金电气有限公司

Nanjing Nowking Electric Co., Ltd



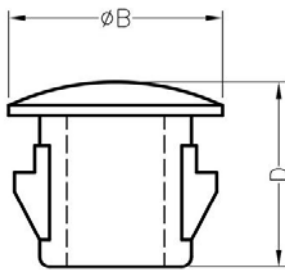
产品名称：扣式塞头

规格型号：KMX-05

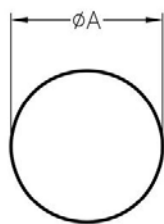
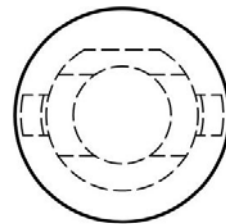
- ◆ MATERIAL: NYLON 66(UL)
- ◆ FLAME CLASS: 94V-0, 94V-2
- ◆ COLOR: BLACK, NATURAL, WHITE
- ◆ UNIT: mm

用途：可将多余的机壳出线口遮盖，装配容易。

KMX-05 结构图



THICKNESS E



MOUNTING HOLES

| PART NO | A | B | D | E | PACKAGE |
|---------|-----|------|-----|-----|---------|
| KMX-05 | 4.8 | 6.35 | 5.5 | 1.6 | 2000 |

总机/TEL: +86 25 85437901 85422485 85436028
[Http://www.nowking.com](http://www.nowking.com) E-mail: nk@nowking.com
 QQ: 260678075 WeChat: 13770725488

南京诺金电气有限公司

Nanjing Nowking Electric Co., Ltd



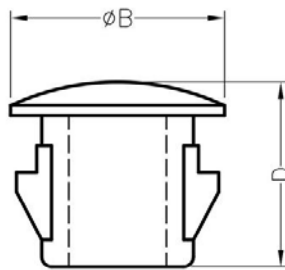
产品名称: 扣式塞头

规格型号: KMX-06

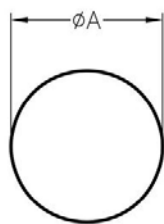
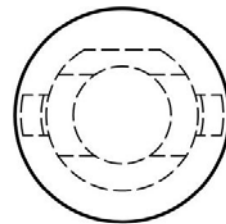
- ◆ MATERIAL: NYLON 66(UL)
- ◆ FLAME CLASS: 94V-0, 94V-2
- ◆ COLOR: BLACK, NATURAL, WHITE
- ◆ UNIT: mm

用途: 可将多余的机壳出线口遮盖, 装配容易。

KMX-06 结构图



THICKNESS E



MOUNTING HOLES

| PART NO | A | B | D | E | PACKAGE |
|---------|-----|-----|-----|-----|---------|
| KMX-06 | 6.4 | 7.6 | 5.6 | 1.6 | 2000 |

总机/TEL: +86 25 85437901 85422485 85436028
[Http://www.nowking.com](http://www.nowking.com) E-mail: nk@nowking.com
 QQ: 260678075 WeChat: 13770725488

南京诺金电气有限公司

Nanjing Nowking Electric Co., Ltd



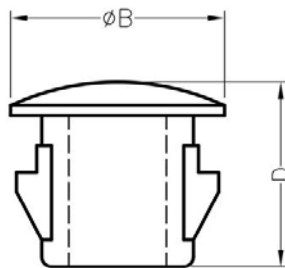
产品名称: 扣式塞头

规格型号: KMX-07

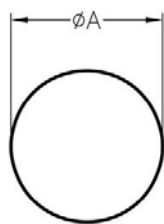
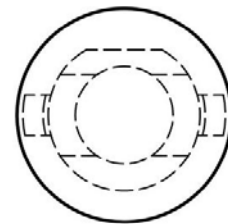
- ◆ MATERIAL: NYLON 66(UL)
- ◆ FLAME CLASS: 94V-0, 94V-2
- ◆ COLOR: BLACK, NATURAL, WHITE
- ◆ UNIT: mm

用途: 可将多余的机壳出线口遮盖, 装配容易。

KMX-07 结构图



THICKNESS E



MOUNTING HOLES

| PART NO | A | B | D | E | PACKAGE |
|---------|-----|------|-----|-----|---------|
| KMX-07 | 9.5 | 13.0 | 5.5 | 1.4 | 1000 |

总机/TEL: +86 25 85437901 85422485 85436028
[Http://www.nowking.com](http://www.nowking.com) E-mail: nk@nowking.com
 QQ: 260678075 WeChat: 13770725488

南京诺金电气有限公司

Nanjing Nowking Electric Co., Ltd



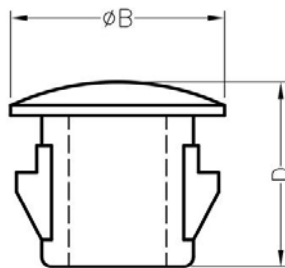
产品名称：扣式塞头

规格型号：KMX-08

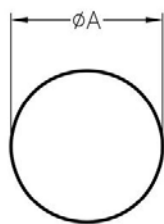
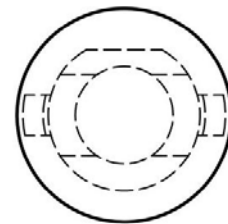
- ◆ MATERIAL: NYLON 66(UL)
- ◆ FLAME CLASS: 94V-0, 94V-2
- ◆ COLOR: BLACK, NATURAL, WHITE
- ◆ UNIT: mm

用途：可将多余的机壳出线口遮盖，装配容易。

KMX-08 结构图



THICKNESS E



MOUNTING HOLES

| PART NO | A | B | D | E | PACKAGE |
|---------|------|------|-----|-----|---------|
| KMX-08 | 13.5 | 15.2 | 6.2 | 2.2 | 500 |

南京诺金电气有限公司

Nanjing Nowking Electric Co., Ltd



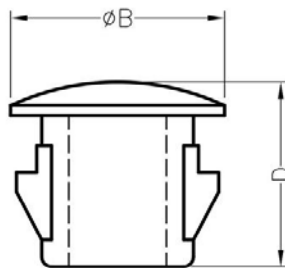
产品名称：扣式塞头

规格型号：KMX-09

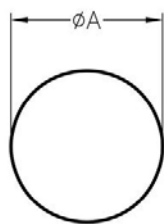
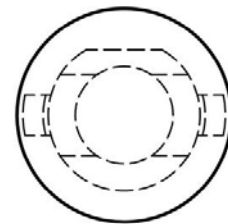
- ◆ MATERIAL: NYLON 66(UL)
- ◆ FLAME CLASS: 94V-0, 94V-2
- ◆ COLOR: BLACK, NATURAL, WHITE
- ◆ UNIT: mm

用途：可将多余的机壳出线口遮盖，装配容易。

KMX-09 结构图



THICKNESS E



MOUNTING HOLES

| PART NO | A | B | D | E | PACKAGE |
|---------|------|------|-----|-----|---------|
| KMX-09 | 15.9 | 20.0 | 7.7 | 2.0 | 1000 |

总机/TEL: +86 25 85437901 85422485 85436028
[Http://www.nowking.com](http://www.nowking.com) E-mail: nk@nowking.com
 QQ: 260678075 WeChat: 13770725488

南京诺金电气有限公司

Nanjing Nowking Electric Co., Ltd



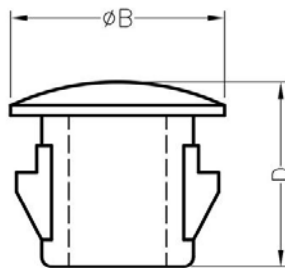
产品名称：扣式塞头

规格型号：KMX-10

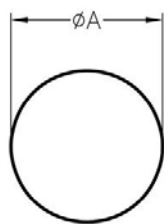
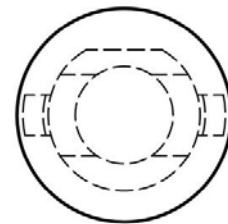
- ◆ MATERIAL: NYLON 66(UL)
- ◆ FLAME CLASS: 94V-0, 94V-2
- ◆ COLOR: BLACK, NATURAL, WHITE
- ◆ UNIT: mm

用途：可将多余的机壳出线口遮盖，装配容易。

KMX-10 结构图



THICKNESS E



MOUNTING HOLES

| PART NO | A | B | D | E | PACKAGE |
|---------|-----|------|-----|---------|---------|
| KMX-10 | 7.0 | 10.9 | 7.0 | 0.8~1.8 | 2000 |

总机/TEL: +86 25 85437901 85422485 85436028
[Http://www.nowking.com](http://www.nowking.com) E-mail: nk@nowking.com
 QQ: 260678075 WeChat: 13770725488



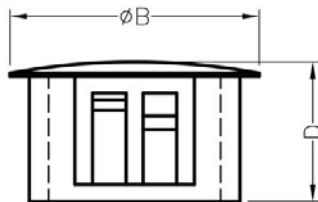
产品名称：扣式塞头

规格型号：KMX-11

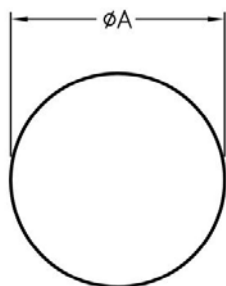
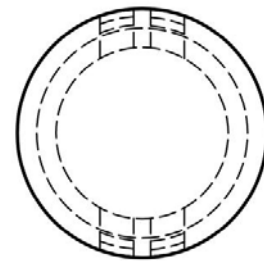
- ◆ MATERIAL: NYLON 66(UL)
- ◆ FLAME CLASS: 94V-0, 94V-2
- ◆ COLOR: BLACK, NATURAL, WHITE
- ◆ UNIT: mm

用途：可将多余的机壳出线口遮盖，装配容易。

KMX-11 结构图



THICKNESS E



MOUNTING HOLE

| PART NO | A | B | D | E | PACKAGE |
|---------|-----|-----|-----|-----|---------|
| KMX-11 | 8.0 | 9.5 | 7.6 | 1.6 | 1000 |

(规格 / 尺寸) 代码说明：

E : 装配板厚



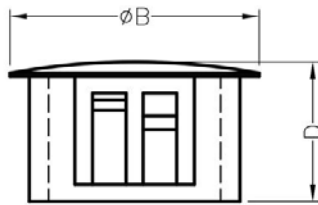
产品名称：扣式塞头

规格型号：KMX-12

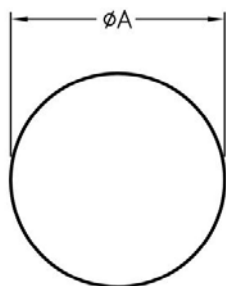
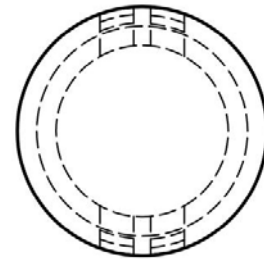
- ◆ MATERIAL: NYLON 66(UL)
- ◆ FLAME CLASS: 94V-0, 94V-2
- ◆ COLOR: BLACK, NATURAL, WHITE
- ◆ UNIT: mm

用途：可将多余的机壳出线口遮盖，装配容易。

KMX-12 结构图



THICKNESS E



MOUNTING HOLE

| PART NO | A | B | D | E | PACKAGE |
|---------|-----|------|------|-----|---------|
| KMX-12 | 9.0 | 11.5 | 10.1 | 3.3 | 1000 |

(规格 / 尺寸) 代码说明：

E : 装配板厚

南京诺金电气有限公司

Nanjing Nowking Electric Co., Ltd



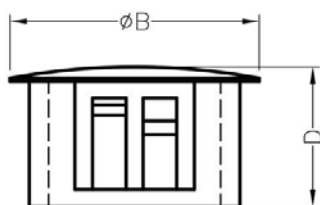
产品名称: 扣式塞头

规格型号: KMX-13

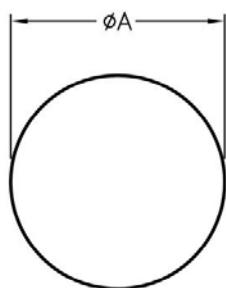
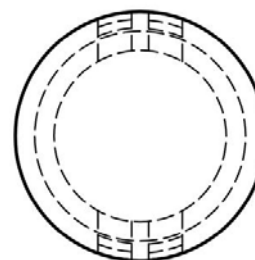
- ◆ MATERIAL: NYLON 66(UL)
- ◆ FLAME CLASS: 94V-0, 94V-2
- ◆ COLOR: BLACK, NATURAL, WHITE
- ◆ UNIT: mm

用途: 可将多余的机壳出线口遮盖, 装配容易。

KMX-13 结构图



THICKNESS E



MOUNTING HOLE

| PART NO | A | B | D | E | PACKAGE |
|---------|-----|------|------|-----|---------|
| KMX-13 | 9.5 | 11.9 | 10.1 | 3.3 | 1000 |

(规格 / 尺寸) 代码说明:

E : 装配板厚

总机/TEL: +86 25 85437901 85422485 85436028
[Http://www.nowking.com](http://www.nowking.com) E-mail: nk@nowking.com
 QQ: 260678075 WeChat: 13770725488

南京诺金电气有限公司

Nanjing Nowking Electric Co., Ltd



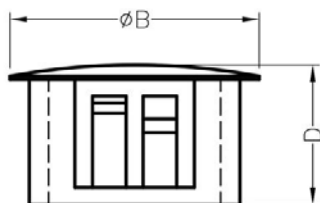
产品名称：扣式塞头

规格型号：KMX-14

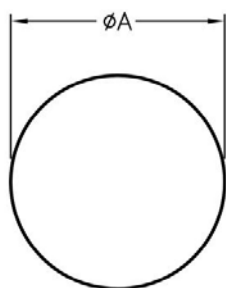
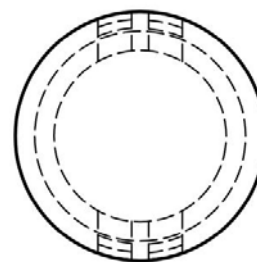
- ◆ MATERIAL: NYLON 66(UL)
- ◆ FLAME CLASS: 94V-0, 94V-2
- ◆ COLOR: BLACK, NATURAL, WHITE
- ◆ UNIT: mm

用途：可将多余的机壳出线口遮盖，装配容易。

KMX-14 结构图



THICKNESS E



MOUNTING HOLE

| PART NO | A | B | D | E | PACKAGE |
|---------|------|------|------|-----|---------|
| KMX-14 | 11.0 | 14.0 | 10.1 | 3.3 | 500 |

(规格 / 尺寸) 代码说明：

E : 装配板厚

总机/TEL: +86 25 85437901 85422485 85436028
[Http://www.nowking.com](http://www.nowking.com) E-mail: nk@nowking.com
 QQ: 260678075 WeChat: 13770725488



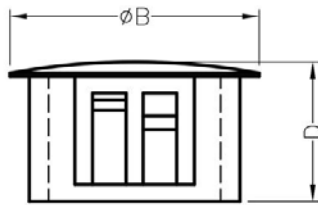
产品名称：扣式塞头

规格型号：KMX-15

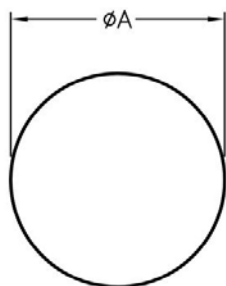
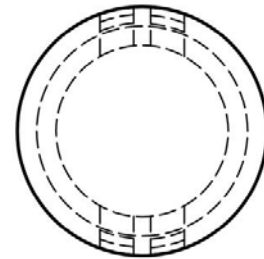
- ◆ MATERIAL: NYLON 66(UL)
- ◆ FLAME CLASS: 94V-0, 94V-2
- ◆ COLOR: BLACK, NATURAL, WHITE
- ◆ UNIT: mm

用途：可将多余的机壳出线口遮盖，装配容易。

KMX-15 结构图



THICKNESS E



MOUNTING HOLE

| PART NO | A | B | D | E | PACKAGE |
|---------|------|------|------|-----|---------|
| KMX-15 | 12.0 | 14.3 | 10.1 | 3.3 | 500 |

(规格 / 尺寸) 代码说明：

E : 装配板厚



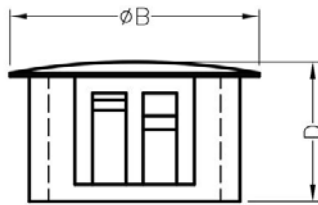
产品名称：扣式塞头

规格型号：KMX-16

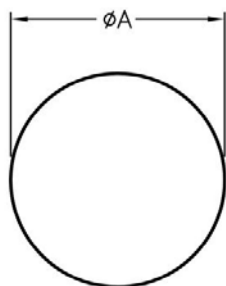
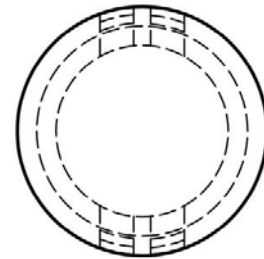
- ◆ MATERIAL: NYLON 66(UL)
- ◆ FLAME CLASS: 94V-0, 94V-2
- ◆ COLOR: BLACK, NATURAL, WHITE
- ◆ UNIT: mm

用途：可将多余的机壳出线口遮盖，装配容易。

KMX-16 结构图



THICKNESS E



MOUNTING HOLE

| PART NO | A | B | D | E | PACKAGE |
|---------|------|------|------|-----|---------|
| KMX-16 | 12.7 | 14.6 | 10.1 | 3.3 | 500 |

(规格 / 尺寸) 代码说明：

E : 装配板厚

南京诺金电气有限公司

Nanjing Nowking Electric Co., Ltd



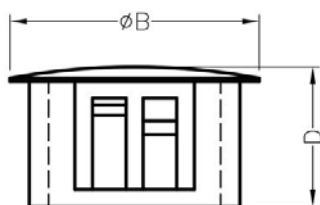
产品名称：扣式塞头

规格型号：KMX-17

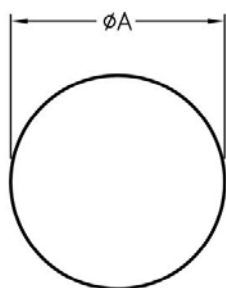
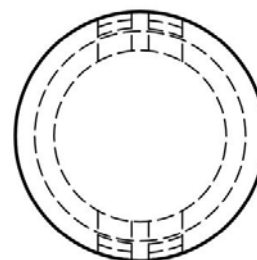
- ◆ MATERIAL: NYLON 66(UL)
- ◆ FLAME CLASS: 94V-0, 94V-2
- ◆ COLOR: BLACK, NATURAL, WHITE
- ◆ UNIT: mm

用途：可将多余的机壳出线口遮盖，装配容易。

KMX-17 结构图



THICKNESS E



MOUNTING HOLE

| PART NO | A | B | D | E | PACKAGE |
|---------|------|------|------|-----|---------|
| KMX-17 | 16.0 | 18.7 | 10.6 | 3.3 | 500 |

(规格 / 尺寸) 代码说明：

E : 装配板厚

总机/TEL: +86 25 85437901 85422485 85436028
[Http://www.nowking.com](http://www.nowking.com) E-mail: nk@nowking.com
 QQ: 260678075 WeChat: 13770725488

南京诺金电气有限公司

Nanjing Nowking Electric Co., Ltd



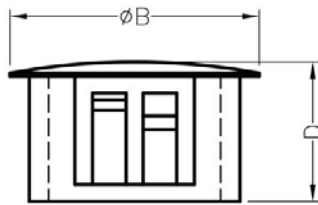
产品名称：扣式塞头

规格型号：KMX-18

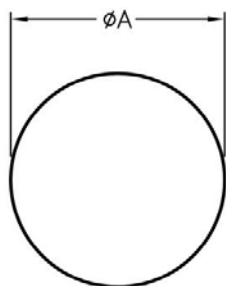
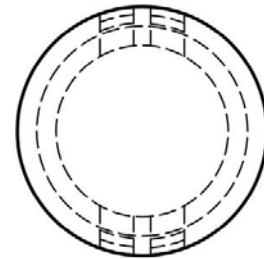
- ◆ MATERIAL: NYLON 66(UL)
- ◆ FLAME CLASS: 94V-0, 94V-2
- ◆ COLOR: BLACK, NATURAL, WHITE
- ◆ UNIT: mm

用途：可将多余的机壳出线口遮盖，装配容易。

KMX-18 结构图



THICKNESS E



MOUNTING HOLE

| PART NO | A | B | D | E | PACKAGE |
|---------|------|------|------|-----|---------|
| KMX-18 | 19.0 | 23.2 | 10.3 | 3.3 | 500 |

(规格 / 尺寸) 代码说明：

E : 装配板厚

总机/TEL: +86 25 85437901 85422485 85436028
[Http://www.nowking.com](http://www.nowking.com) E-mail: nk@nowking.com
 QQ: 260678075 WeChat: 13770725488



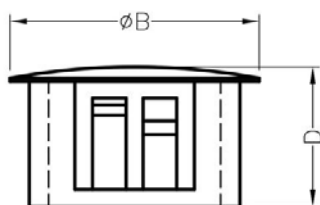
产品名称：扣式塞头

规格型号：KMX-19

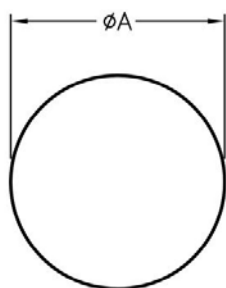
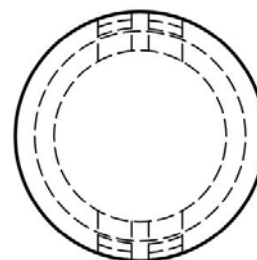
- ◆ MATERIAL: NYLON 66(UL)
- ◆ FLAME CLASS: 94V-0, 94V-2
- ◆ COLOR: BLACK, NATURAL, WHITE
- ◆ UNIT: mm

用途：可将多余的机壳出线口遮盖，装配容易。

KMX-19 结构图



THICKNESS E



MOUNTING HOLE

| PART NO | A | B | D | E | PACKAGE |
|---------|------|------|------|-----|---------|
| KMX-19 | 22.2 | 25.4 | 11.0 | 3.3 | 500 |

(规格 / 尺寸) 代码说明：

E : 装配板厚



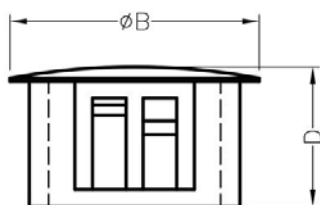
产品名称：扣式塞头

规格型号：KMX-20

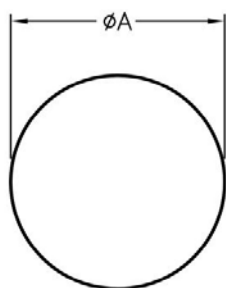
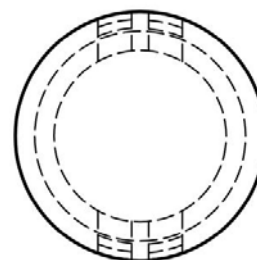
- ◆ MATERIAL: NYLON 66(UL)
- ◆ FLAME CLASS: 94V-0, 94V-2
- ◆ COLOR: BLACK, NATURAL, WHITE
- ◆ UNIT: mm

用途：可将多余的机壳出线口遮盖，装配容易。

KMX-20 结构图



THICKNESS E



MOUNTING HOLE

| PART NO | A | B | D | E | PACKAGE |
|---------|------|------|------|-----|---------|
| KMX-20 | 25.4 | 28.4 | 11.0 | 3.3 | 200 |

(规格 / 尺寸) 代码说明：

E : 装配板厚



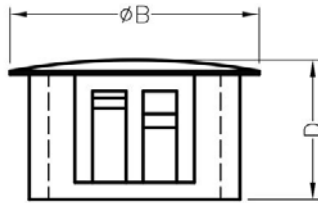
产品名称：扣式塞头

规格型号：KMX-21

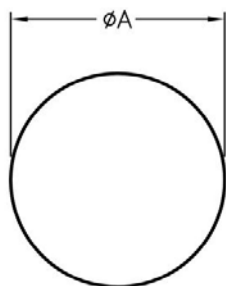
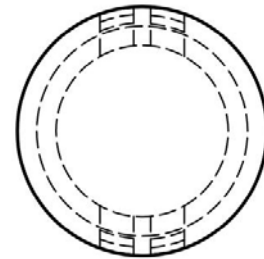
- ◆ MATERIAL: NYLON 66(UL)
- ◆ FLAME CLASS: 94V-0, 94V-2
- ◆ COLOR: BLACK, NATURAL, WHITE
- ◆ UNIT: mm

用途：可将多余的机壳出线口遮盖，装配容易。

KMX-21 结构图



THICKNESS E



MOUNTING HOLE

| PART NO | A | B | D | E | PACKAGE |
|---------|------|------|------|-----|---------|
| KMX-21 | 28.0 | 32.0 | 13.5 | 3.3 | 200 |

(规格 / 尺寸) 代码说明：

E : 装配板厚



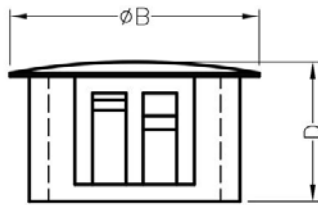
产品名称：扣式塞头

规格型号：KMX-22

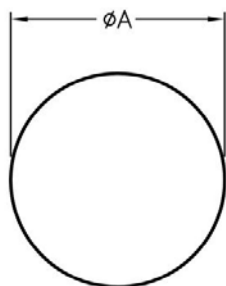
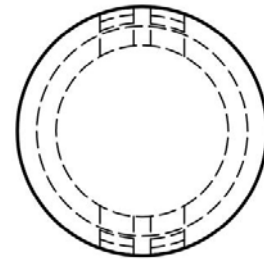
- ◆ MATERIAL: NYLON 66(UL)
- ◆ FLAME CLASS: 94V-0, 94V-2
- ◆ COLOR: BLACK, NATURAL, WHITE
- ◆ UNIT: mm

用途：可将多余的机壳出线口遮盖，装配容易。

KMX-22 结构图



THICKNESS E



MOUNTING HOLE

| PART NO | A | B | D | E | PACKAGE |
|---------|------|------|------|-----|---------|
| KMX-22 | 30.0 | 34.2 | 11.3 | 3.3 | 200 |

(规格 / 尺寸) 代码说明：

E : 装配板厚

南京诺金电气有限公司

Nanjing Nowking Electric Co., Ltd



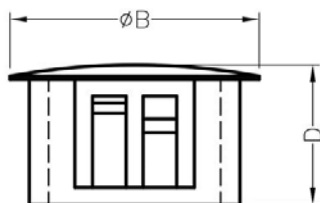
产品名称：扣式塞头

规格型号：KMX-23

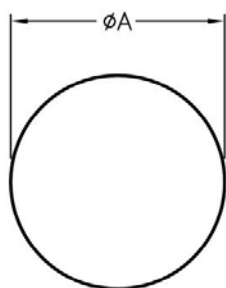
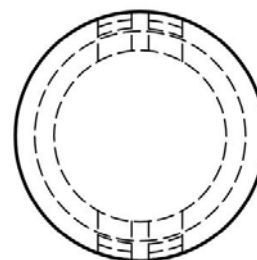
- ◆ MATERIAL: NYLON 66(UL)
- ◆ FLAME CLASS: 94V-0, 94V-2
- ◆ COLOR: BLACK, NATURAL, WHITE
- ◆ UNIT: mm

用途：可将多余的机壳出线口遮盖，装配容易。

KMX-23 结构图



THICKNESS E



MOUNTING HOLE

| PART NO | A | B | D | E | PACKAGE |
|---------|------|------|------|-----|---------|
| KMX-23 | 14.0 | 16.3 | 10.1 | 3.3 | 500 |

(规格 / 尺寸) 代码说明：

E : 装配板厚

总机/TEL: +86 25 85437901 85422485 85436028
[Http://www.nowking.com](http://www.nowking.com) E-mail: nk@nowking.com
 QQ: 260678075 WeChat: 13770725488

南京诺金电气有限公司

Nanjing Nowking Electric Co., Ltd



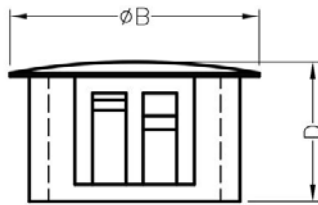
产品名称：扣式塞头

规格型号：KMX-24

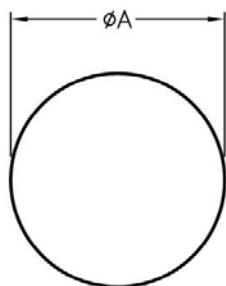
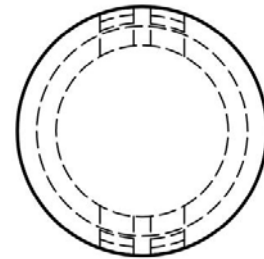
- ◆ MATERIAL: NYLON 66(UL)
- ◆ FLAME CLASS: 94V-0, 94V-2
- ◆ COLOR: BLACK, NATURAL, WHITE
- ◆ UNIT: mm

用途：可将多余的机壳出线口遮盖，装配容易。

KMX-24 结构图



THICKNESS E



MOUNTING HOLE

| PART NO | A | B | D | E | PACKAGE |
|---------|------|------|------|-----|---------|
| KMX-24 | 17.0 | 19.3 | 10.1 | 3.3 | 500 |

(规格 / 尺寸) 代码说明：

E : 装配板厚

总机/TEL: +86 25 85437901 85422485 85436028
[Http://www.nowking.com](http://www.nowking.com) E-mail: nk@nowking.com
 QQ: 260678075 WeChat: 13770725488



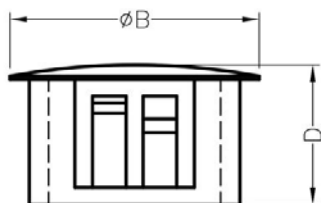
产品名称：扣式塞头

规格型号：KMX-25

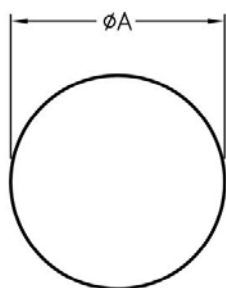
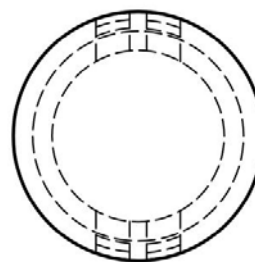
- ◆ MATERIAL: NYLON 66(UL)
- ◆ FLAME CLASS: 94V-0, 94V-2
- ◆ COLOR: BLACK, NATURAL, WHITE
- ◆ UNIT: mm

用途：可将多余的机壳出线口遮盖，装配容易。

KMX-25 结构图



THICKNESS E



MOUNTING HOLE

| PART NO | A | B | D | E | PACKAGE |
|---------|------|------|------|-----|---------|
| KMX-25 | 20.0 | 24.0 | 10.6 | 3.3 | 500 |

(规格 / 尺寸) 代码说明：

E : 装配板厚

南京诺金电气有限公司

Nanjing Nowking Electric Co., Ltd



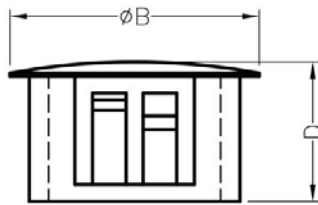
产品名称：扣式塞头

规格型号：KMX-26

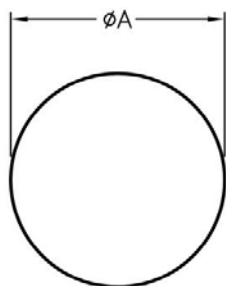
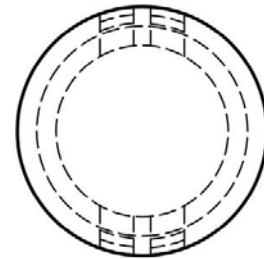
- ◆ MATERIAL: NYLON 66(UL)
- ◆ FLAME CLASS: 94V-0, 94V-2
- ◆ COLOR: BLACK, NATURAL, WHITE
- ◆ UNIT: mm

用途：可将多余的机壳出线口遮盖，装配容易。

KMX-26 结构图



THICKNESS E



MOUNTING HOLE

| PART NO | A | B | D | E | PACKAGE |
|---------|------|------|------|-----|---------|
| KMX-26 | 32.0 | 36.0 | 12.0 | 3.3 | 200 |

(规格 / 尺寸) 代码说明：

E : 装配板厚

总机/TEL: +86 25 85437901 85422485 85436028
[Http://www.nowking.com](http://www.nowking.com) E-mail: nk@nowking.com
 QQ: 260678075 WeChat: 13770725488

南京诺金电气有限公司

Nanjing Nowking Electric Co., Ltd



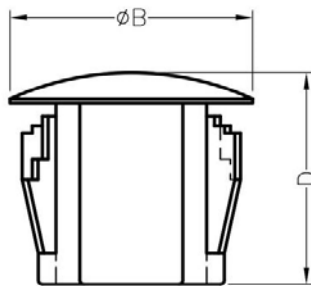
产品名称：扣式塞头

规格型号：KMX-27

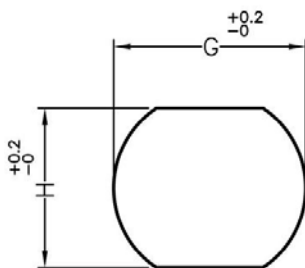
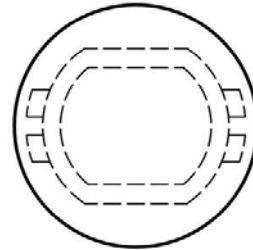
- ◆ MATERIAL: NYLON 66(UL)
- ◆ FLAME CLASS: 94V-0, 94V-2
- ◆ COLOR: BLACK, NATURAL
- ◆ UNIT: mm

用途：可将多余的机壳出线口遮盖，装配容易。

KMX-27 结构图



THICKNESS E



MOUNTING HOLES

| PART NO | B | D | E | G | H | PACKAGE |
|---------|------|------|---------|-----|-----|---------|
| KMX-27 | 12.0 | 10.5 | 0.8~3.5 | 9.5 | 7.9 | 1000 |

总机/TEL: +86 25 85437901 85422485 85436028
[Http://www.nowking.com](http://www.nowking.com) E-mail: nk@nowking.com
 QQ: 260678075 WeChat: 13770725488

南京诺金电气有限公司

Nanjing Nowking Electric Co., Ltd



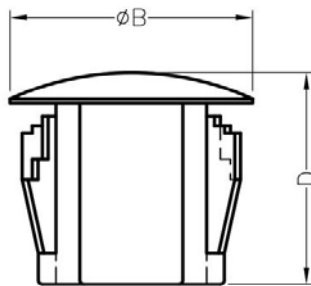
产品名称：扣式塞头

规格型号：KMX-28

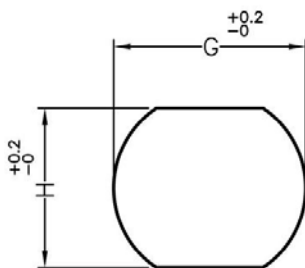
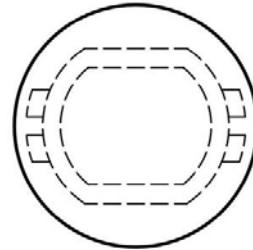
- ◆ MATERIAL: NYLON 66(UL)
- ◆ FLAME CLASS: 94V-0, 94V-2
- ◆ COLOR: BLACK, NATURAL
- ◆ UNIT: mm

用途：可将多余的机壳出线口遮盖，装配容易。

KMX-28 结构图



THICKNESS E



MOUNTING HOLES

| PART NO | B | D | E | G | H | PACKAGE |
|---------|------|------|---------|------|------|---------|
| KMX-28 | 16.2 | 10.6 | 0.8~3.0 | 12.7 | 11.5 | 500 |

总机/TEL: +86 25 85437901 85422485 85436028
[Http://www.nowking.com](http://www.nowking.com) E-mail: nk@nowking.com
 QQ: 260678075 WeChat: 13770725488

南京诺金电气有限公司

Nanjing Nowking Electric Co., Ltd



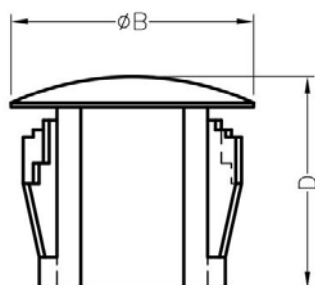
产品名称：扣式塞头

规格型号：KMX-29

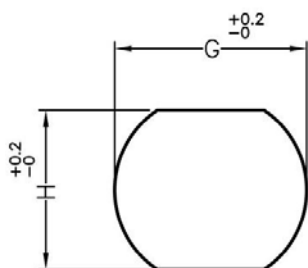
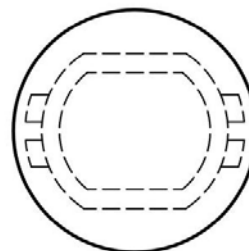
- ◆ MATERIAL: NYLON 66(UL)
- ◆ FLAME CLASS: 94V-0, 94V-2
- ◆ COLOR: BLACK, NATURAL
- ◆ UNIT: mm

用途：可将多余的机壳出线口遮盖，装配容易。

KMX-29 结构图



THICKNESS E



MOUNTING HOLES

| PART NO | B | D | E | G | H | PACKAGE |
|---------|------|------|---------|------|------|---------|
| KMX-29 | 18.6 | 10.6 | 0.8~3.5 | 15.9 | 14.0 | 500 |

总机/TEL: +86 25 85437901 85422485 85436028
[Http://www.nowking.com](http://www.nowking.com) E-mail: nk@nowking.com
 QQ: 260678075 WeChat: 13770725488

南京诺金电气有限公司

Nanjing Nowking Electric Co., Ltd



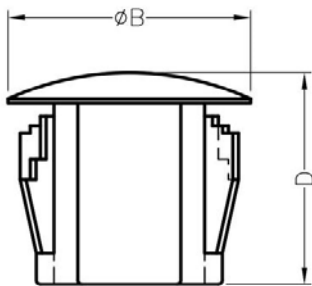
产品名称：扣式塞头

规格型号：KMX-30

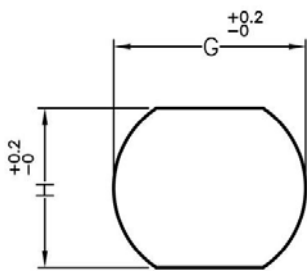
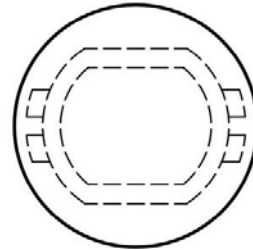
- ◆ MATERIAL: NYLON 66(UL)
- ◆ FLAME CLASS: 94V-0, 94V-2
- ◆ COLOR: BLACK, NATURAL
- ◆ UNIT: mm

用途：可将多余的机壳出线口遮盖，装配容易。

KMX-30 结构图



THICKNESS E



MOUNTING HOLES

| PART NO | B | D | E | G | H | PACKAGE |
|---------|------|------|---------|------|------|---------|
| KMX-30 | 22.7 | 10.6 | 0.8~3.0 | 19.0 | 16.5 | 500 |

总机/TEL: +86 25 85437901 85422485 85436028
[Http://www.nowking.com](http://www.nowking.com) E-mail: nk@nowking.com
 QQ: 260678075 WeChat: 13770725488

南京诺金电气有限公司

Nanjing Nowking Electric Co., Ltd



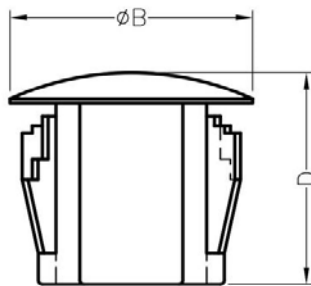
产品名称：扣式塞头

规格型号：KMX-31

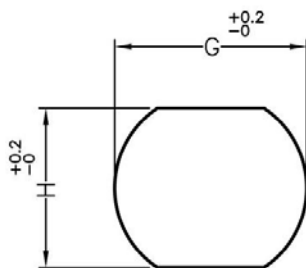
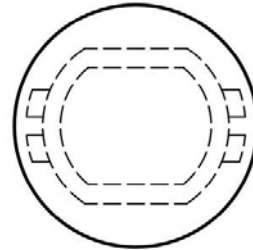
- ◆ MATERIAL: NYLON 66(UL)
- ◆ FLAME CLASS: 94V-0, 94V-2
- ◆ COLOR: BLACK, NATURAL
- ◆ UNIT: mm

用途：可将多余的机壳出线口遮盖，装配容易。

KMX-31 结构图



THICKNESS E



MOUNTING HOLES

| PART NO | B | D | E | G | H | PACKAGE |
|---------|------|------|---------|------|------|---------|
| KMX-31 | 25.6 | 10.6 | 0.8~3.3 | 22.1 | 20.5 | 500 |

总机/TEL: +86 25 85437901 85422485 85436028
[Http://www.nowking.com](http://www.nowking.com) E-mail: nk@nowking.com
 QQ: 260678075 WeChat: 13770725488

南京诺金电气有限公司

Nanjing Nowking Electric Co., Ltd



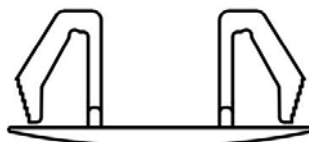
产品名称：扣式塞头

规格型号：KMX-32

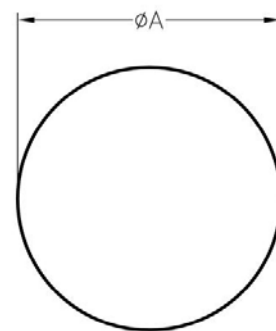
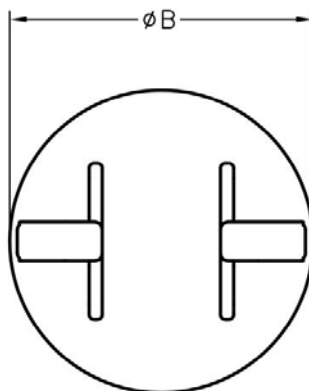
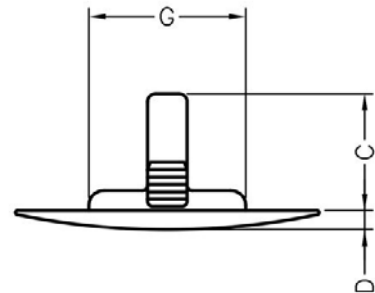
- ◆ MATERIAL: NYLON 66(UL)
- ◆ FLAME CLASS: 94V-0, 94V-2
- ◆ COLOR: BLACK, NATURAL, WHITE
- ◆ UNIT: mm

用途：可将多余的机壳出线口遮盖，装配容易。

KMX-32 结构图



CHASSIS THICKNESS E



MOUNTING HOLE

| PART NO | A | B | C | D | E | G | PACKAGE |
|---------|---------|------|------|-----|---------|-----|---------|
| KMX-32 | Ø11~Ø14 | 18.5 | 10.4 | 1.7 | 0.8~3.5 | 9.8 | 500 |

(规格 / 尺寸) 代码说明：

E : 装配板厚

总机/TEL:+86 25 85437901 85422485 85436028
[Http://www.nowking.com](http://www.nowking.com) E-mail: nk@nowking.com
 QQ: 260678075 WeChat:13770725488

南京诺金电气有限公司

Nanjing Nowking Electric Co., Ltd



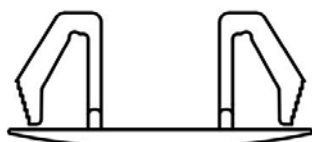
产品名称：扣式塞头

规格型号：KMX-33

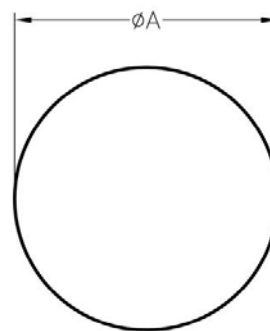
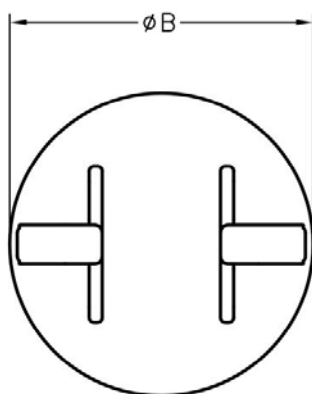
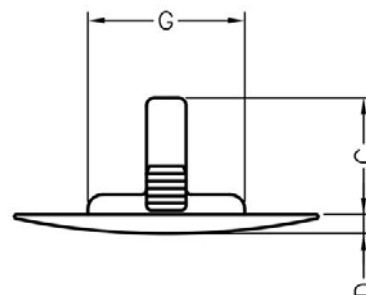
- ◆ MATERIAL: NYLON 66(UL)
- ◆ FLAME CLASS: 94V-0, 94V-2
- ◆ COLOR: BLACK, NATURAL, WHITE
- ◆ UNIT: mm

用途：可将多余的机壳出线口遮盖，装配容易。

KMX-33 结构图



CHASSIS THICKNESS E



MOUNTING HOLE

| PART NO | A | B | C | D | E | G | PACKAGE |
|---------|---------|------|------|-----|---------|------|---------|
| KMX-33 | Ø22~Ø26 | 30.0 | 11.6 | 1.9 | 0.8~3.5 | 15.5 | 500 |

(规格 / 尺寸) 代码说明：

E : 装配板厚

总机/TEL: +86 25 85437901 85422485 85436028
[Http://www.nowking.com](http://www.nowking.com) E-mail: nk@nowking.com
 QQ: 260678075 WeChat: 13770725488

南京诺金电气有限公司

Nanjing Nowking Electric Co., Ltd



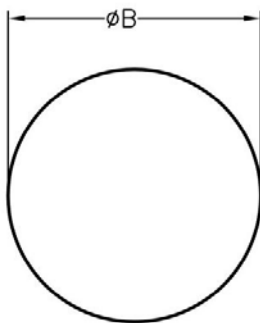
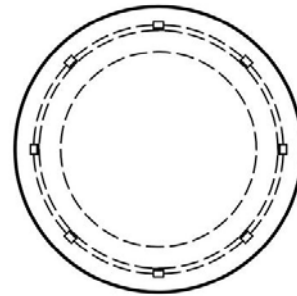
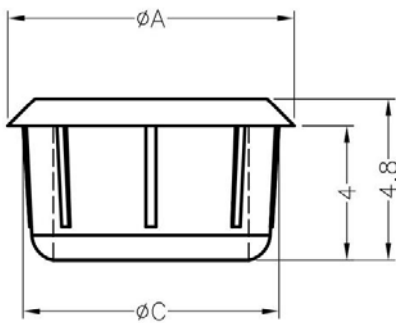
产品名称：扣式塞头

规格型号：KMX-34

- ◆ MATERIAL: NYLON 66(UL)
- ◆ FLAME CLASS: 94V-0, 94V-2
- ◆ COLOR: BLACK, NATURAL
- ◆ UNIT: mm

用途：可将多余的机壳出线口遮盖，装配容易。

KMX-34 结构图



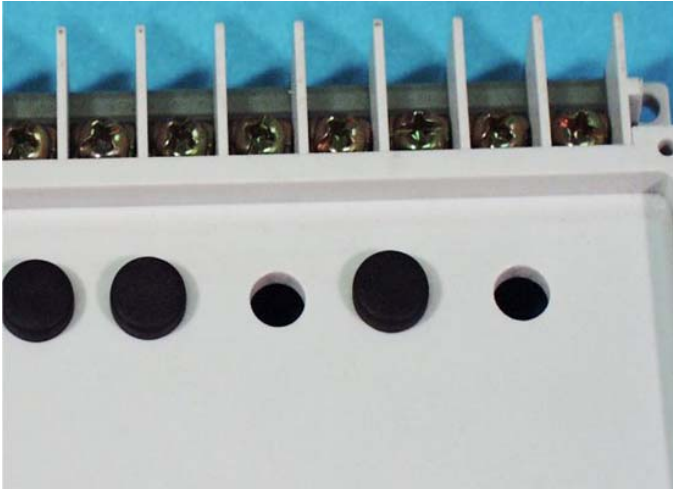
MOUNTING HOLE

| PART NO | A | B | C | PACKAGE |
|---------|-----|-----|-----|---------|
| KMX-34 | 8.5 | 7.5 | 7.6 | 1000 |

总机/TEL: +86 25 85437901 85422485 85436028
[Http://www.nowking.com](http://www.nowking.com) E-mail: nk@nowking.com
 QQ: 260678075 WeChat: 13770725488

南京诺金电气有限公司

Nanjing Nowking Electric Co., Ltd



产品名称：扣式塞头

规格型号：KMX-35

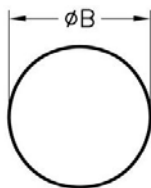
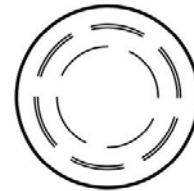
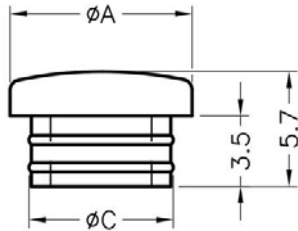
◆ MATERIAL: TPE

◆ COLOR: BLACK

◆ UNIT: mm

用途：可将多余的机壳出线口遮盖，装配容易。

KMX-35 结构图



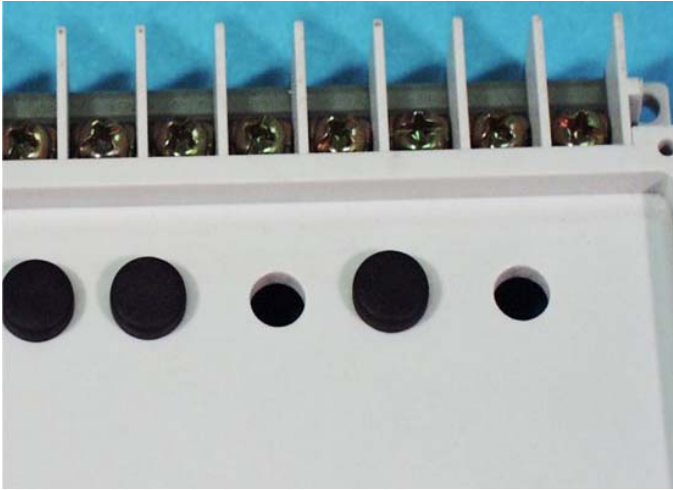
MOUNTING HOLES

| PART NO | A | B | C | PACKAGE |
|---------|-----|-----|-----|---------|
| KMX-35 | 7.0 | 5.0 | 5.2 | 1000 |

总机/TEL: +86 25 85437901 85422485 85436028
[Http://www.nowking.com](http://www.nowking.com) E-mail: nk@nowking.com
 QQ: 260678075 WeChat: 13770725488

南京诺金电气有限公司

Nanjing Nowking Electric Co., Ltd



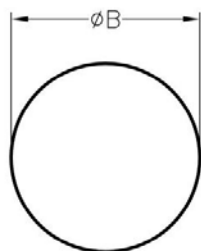
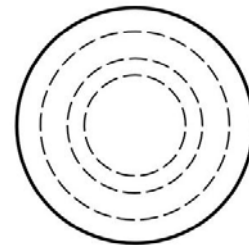
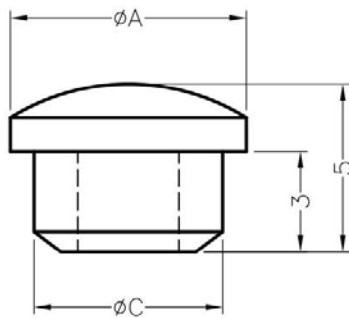
产品名称：扣式塞头

规格型号：KMX-36

- ◆ MATERIAL: SILICON RUBBER
- ◆ COLOR: BLACK,BLUE,COMPUTER
- ◆ UNIT: mm

用途：可将多余的机壳出线口遮盖，装配容易。

KMX-36 结构图



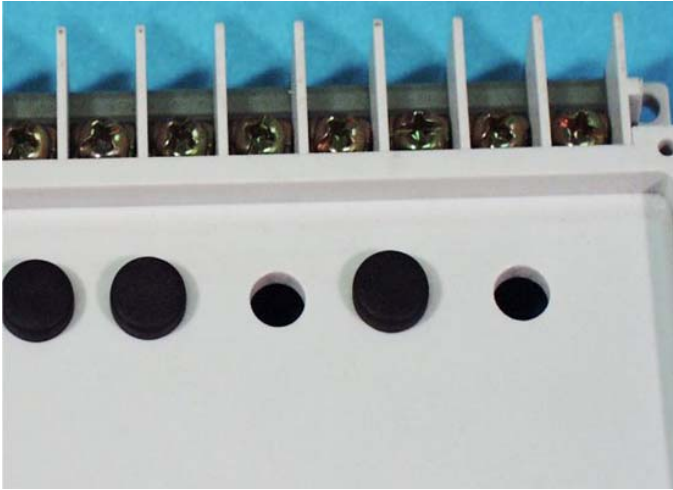
MOUNTING HOLE

| PART NO | A | B | C | PACKAGE |
|---------|-----|-----|-----|---------|
| KMX-36 | 7.0 | 5.5 | 5.6 | 1000 |

总机/TEL:+86 25 85437901 85422485 85436028
[Http://www.nowking.com](http://www.nowking.com) E-mail: nk@nowking.com
 QQ: 260678075 WeChat:13770725488

南京诺金电气有限公司

Nanjing Nowking Electric Co., Ltd



产品名称：扣式塞头

规格型号：KMX-37

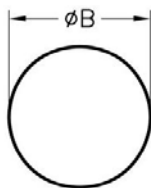
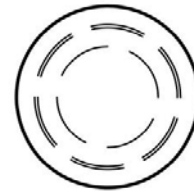
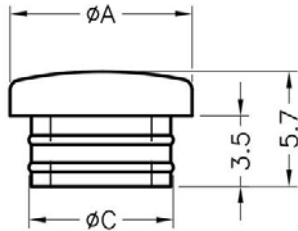
◆ MATERIAL: TPE

◆ COLOR: BLACK

◆ UNIT: mm

用途：可将多余的机壳出线口遮盖，装配容易。

KMX-37 结构图



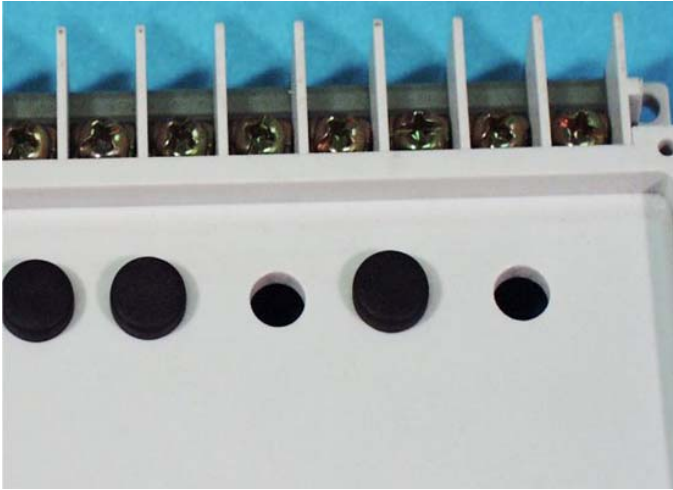
MOUNTING HOLES

| PART NO | A | B | C | PACKAGE |
|---------|-----|-----|-----|---------|
| KMX-37 | 8.0 | 6.0 | 6.2 | 1000 |

总机/TEL: +86 25 85437901 85422485 85436028
[Http://www.nowking.com](http://www.nowking.com) E-mail: nk@nowking.com
 QQ: 260678075 WeChat: 13770725488

南京诺金电气有限公司

Nanjing Nowking Electric Co., Ltd



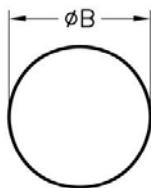
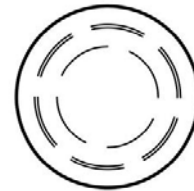
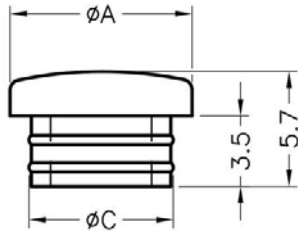
产品名称：扣式塞头

规格型号：KMX-38

- ◆ MATERIAL: TPE
- ◆ COLOR: BLACK
- ◆ UNIT: mm

用途：可将多余的机壳出线口遮盖，装配容易。

KMX-38 结构图



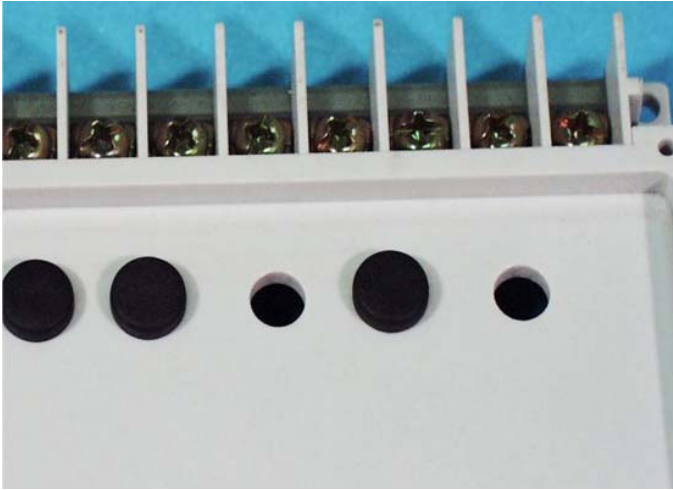
MOUNTING HOLES

| PART NO | A | B | C | PACKAGE |
|---------|-----|-----|-----|---------|
| KMX-38 | 8.0 | 6.5 | 6.9 | 1000 |

总机/TEL: +86 25 85437901 85422485 85436028
[Http://www.nowking.com](http://www.nowking.com) E-mail: nk@nowking.com
 QQ: 260678075 WeChat: 13770725488

南京诺金电气有限公司

Nanjing Nowking Electric Co., Ltd



产品名称：扣式塞头

规格型号：KMX-39

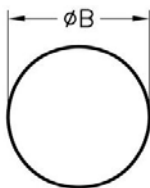
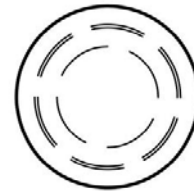
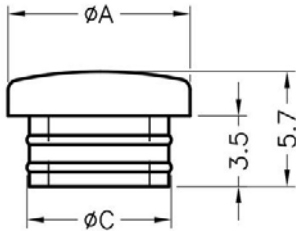
◆ MATERIAL: TPE

◆ COLOR: BLACK

◆ UNIT: mm

用途：可将多余的机壳出线口遮盖，装配容易。

KMX-39 结构图



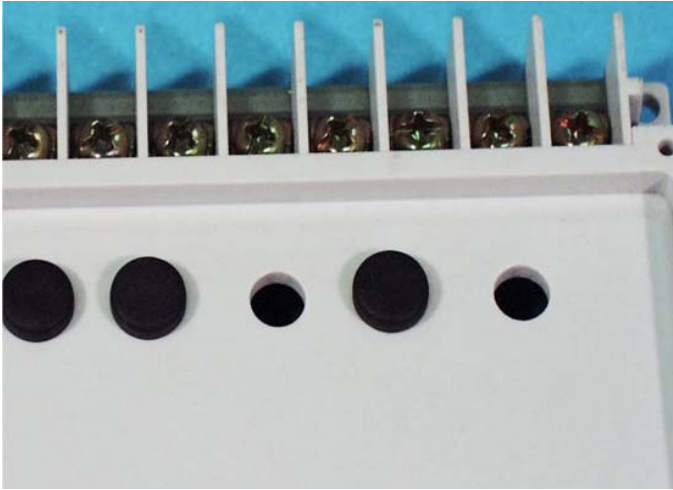
MOUNTING HOLES

| PART NO | A | B | C | PACKAGE |
|---------|-----|-----|-----|---------|
| KMX-39 | 9.0 | 7.0 | 7.2 | 1000 |

总机/TEL: +86 25 85437901 85422485 85436028
[Http://www.nowking.com](http://www.nowking.com) E-mail: nk@nowking.com
 QQ: 260678075 WeChat: 13770725488

南京诺金电气有限公司

Nanjing Nowking Electric Co., Ltd



产品名称：扣式塞头

规格型号：KMX-40

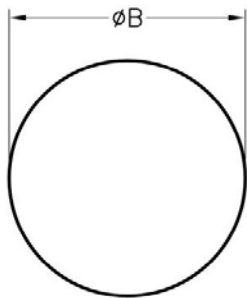
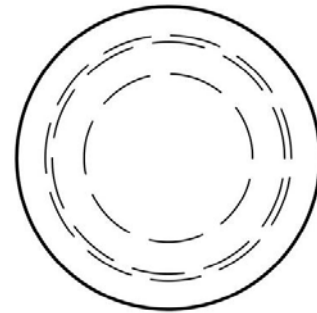
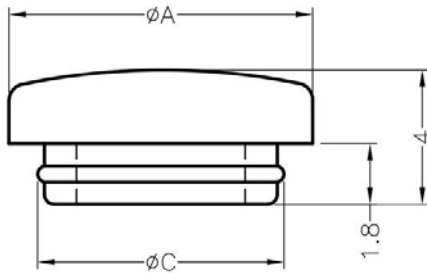
◆MATERIAL: TPE

◆COLOR: BLACK

◆UNIT: mm

用途：可将多余的机壳出线口遮盖，装配容易。

KMX-40 结构图



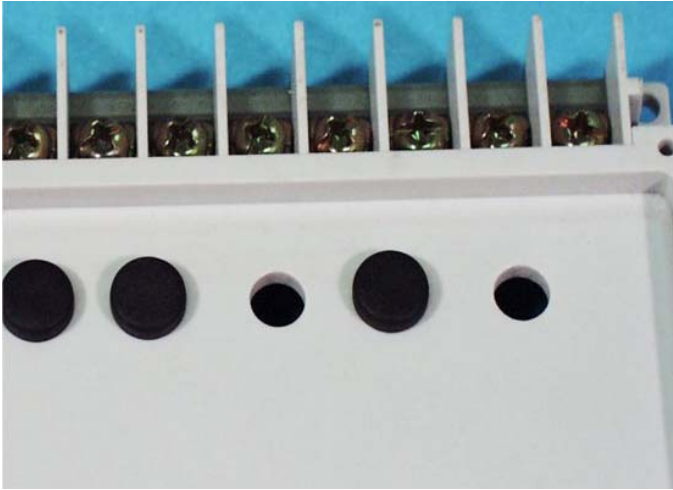
MOUNTING HOLES

| PART NO | A | B | C | PACKAGE |
|---------|-----|-----|-----|---------|
| KMX-40 | 9.0 | 7.0 | 7.3 | 1000 |

总机/TEL:+86 25 85437901 85422485 85436028
[Http://www.nowking.com](http://www.nowking.com) E-mail: nk@nowking.com
 QQ: 260678075 WeChat:13770725488

南京诺金电气有限公司

Nanjing Nowking Electric Co., Ltd



产品名称：扣式塞头

规格型号：KMX-41

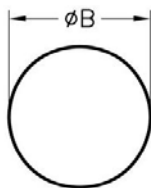
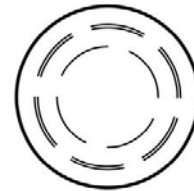
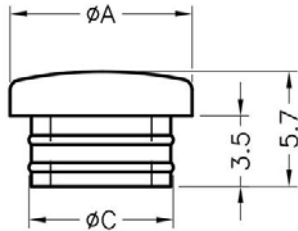
◆ MATERIAL: TPE

◆ COLOR: BLACK

◆ UNIT: mm

用途：可将多余的机壳出线口遮盖，装配容易。

KMX-41 结构图



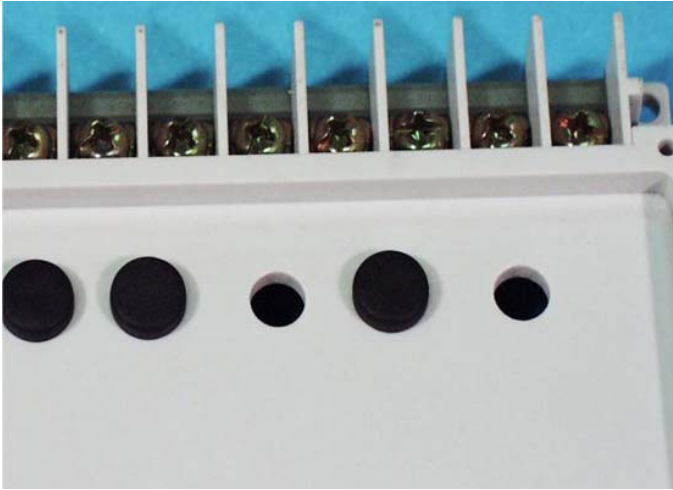
MOUNTING HOLES

| PART NO | A | B | C | PACKAGE |
|---------|------|-----|-----|---------|
| KMX-41 | 10.0 | 8.0 | 8.2 | 1000 |

总机/TEL: +86 25 85437901 85422485 85436028
[Http://www.nowking.com](http://www.nowking.com) E-mail: nk@nowking.com
 QQ: 260678075 WeChat: 13770725488

南京诺金电气有限公司

Nanjing Nowking Electric Co., Ltd



产品名称：扣式塞头

规格型号：KMX-42

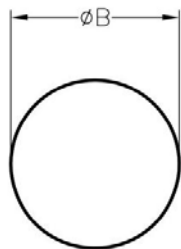
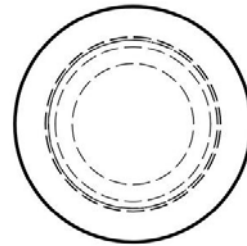
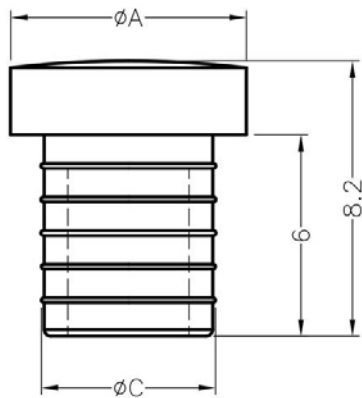
◆ MATERIAL: TPE

◆ COLOR: BLACK

◆ UNIT: mm

用途：可将多余的机壳出线口遮盖，装配容易。

KMX-42 结构图



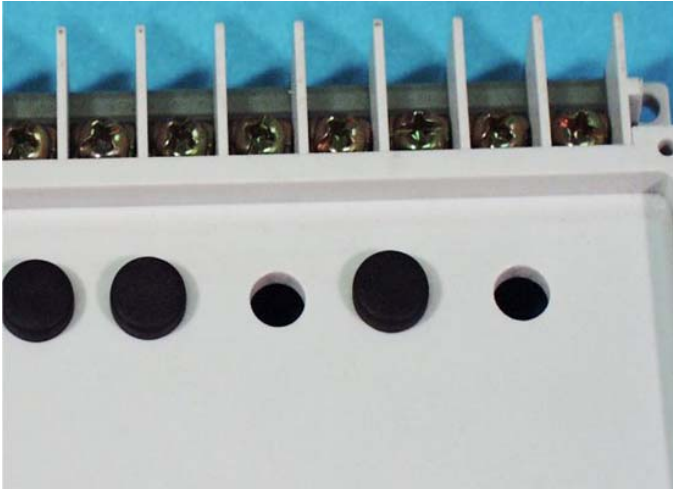
MOUNTING HOLES

| PART NO | A | B | C | PACKAGE |
|---------|-----|-----|-----|---------|
| KMX-42 | 7.0 | 5.0 | 5.2 | 1000 |

总机/TEL: +86 25 85437901 85422485 85436028
[Http://www.nowking.com](http://www.nowking.com) E-mail: nk@nowking.com
 QQ: 260678075 WeChat: 13770725488

南京诺金电气有限公司

Nanjing Nowking Electric Co., Ltd



产品名称：扣式塞头

规格型号：KMX-43

◆ MATERIAL: SILICON RUBBER

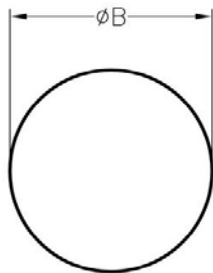
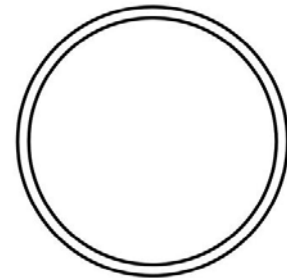
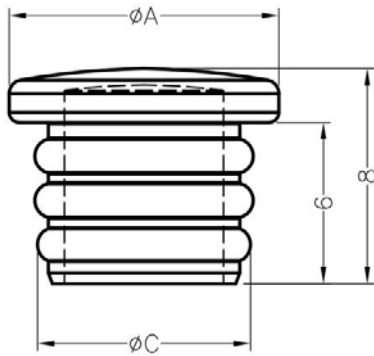
◆ COLOR: BLACK

◆ UNIT: mm

用途：可将多余的机壳出线口遮盖，装配容易。

装配孔尺寸仅供参考

KMX-43 结构图



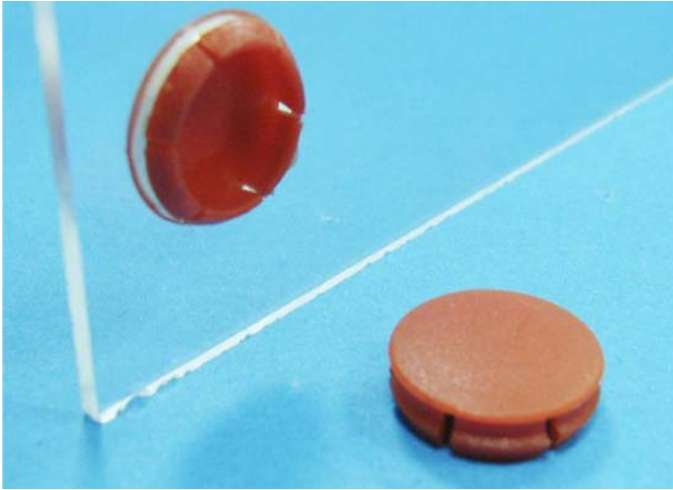
MOUNTING HOLE

| PART NO | A | B | C | PACKAGE |
|---------|------|-----|-----|---------|
| KMX-43 | 10.0 | 7.5 | 7.9 | 1000 |

总机/TEL: +86 25 85437901 85422485 85436028
[Http://www.nowking.com](http://www.nowking.com) E-mail: nk@nowking.com
 QQ: 260678075 WeChat: 13770725488

南京诺金电气有限公司

Nanjing Nowking Electric Co., Ltd



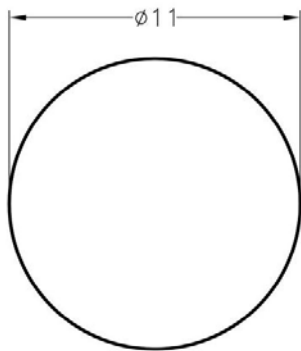
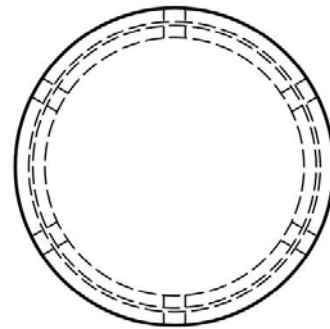
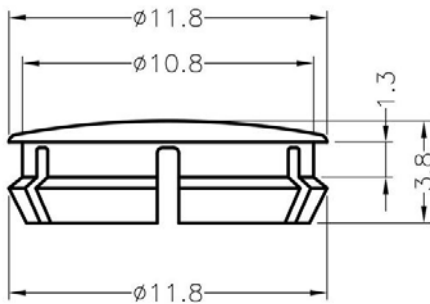
产品名称：扣式塞头

规格型号：KMX-44

- ◆ MATERIAL: NYLON 66(UL)
- ◆ COLOR: BLACK,BLUE,RED,WHITE
- ◆ UNIT: mm

用途：可将多余的机壳出线口遮盖，装配容易。

KMX-44 结构图



MOUNTING HOLE

| PART NO | PACKAGE |
|---------|---------|
| KMX-44 | 1000 |

总机/TEL:+86 25 85437901 85422485 85436028
[Http://www.nowking.com](http://www.nowking.com) E-mail: nk@nowking.com
 QQ: 260678075 WeChat:13770725488

南京诺金电气有限公司

Nanjing Nowking Electric Co., Ltd



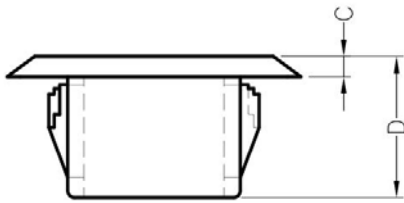
产品名称：扣式塞头

规格型号：KMX-45

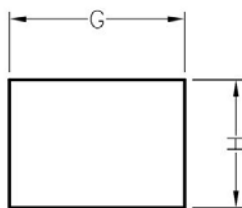
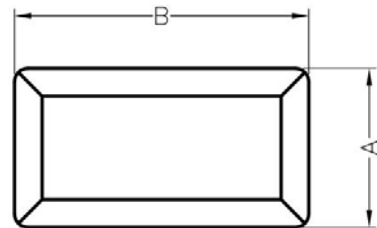
- ◆ MATERIAL: NYLON 66(UL)
- ◆ FLAME CLASS: 94V-0,94V-2
- ◆ COLOR: BLACK,GRAY,NATURAL
- ◆ UNIT: mm

用途：可将多余的机壳出线口遮盖，装配容易。

KMX-45 结构图



CHASSIS THICKNESS E



MOUNTING HOLE

| PART NO | A | B | C | D | F | G | H | PACKAGE |
|---------|------|------|-----|------|---------|------|-----|---------|
| KMX-45 | 11.8 | 21.8 | 1.5 | 10.5 | 0.8~3.5 | 13.0 | 9.5 | 500 |

(规格 / 尺寸) 代码说明：

F : 装配板厚

总机/TEL:+86 25 85437901 85422485 85436028
[Http://www.nowking.com](http://www.nowking.com) E-mail: nk@nowking.com
 QQ: 260678075 WeChat:13770725488

南京诺金电气有限公司

Nanjing Nowking Electric Co., Ltd



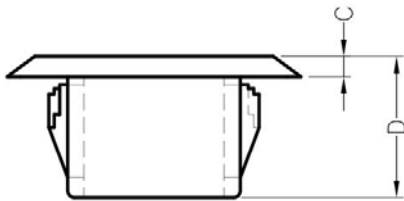
产品名称：扣式塞头

规格型号：KMX-46

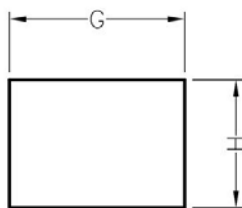
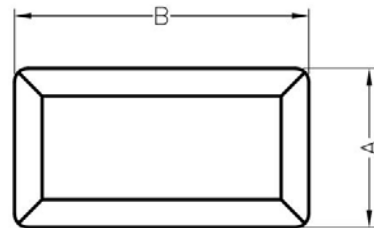
- ◆ MATERIAL: NYLON 66(UL)
- ◆ FLAME CLASS: 94V-0,94V-2
- ◆ COLOR: BLACK,GRAY,NATURAL
- ◆ UNIT: mm

用途：可将多余的机壳出线口遮盖，装配容易。

KMX-46 结构图



CHASSIS THICKNESS E



MOUNTING HOLE

| PART NO | A | B | C | D | F | G | H | PACKAGE |
|---------|------|------|-----|------|----------|------|------|---------|
| KMX-46 | 15.0 | 15.0 | 2.0 | 11.0 | 0.75~3.8 | 13.5 | 13.5 | 500 |

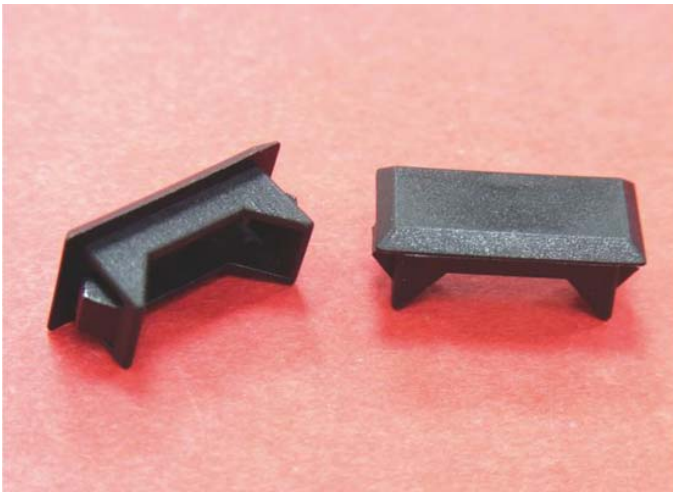
(规格 / 尺寸) 代码说明：

F : 装配板厚

总机/TEL:+86 25 85437901 85422485 85436028
[Http://www.nowking.com](http://www.nowking.com) E-mail: nk@nowking.com
 QQ: 260678075 WeChat:13770725488

南京诺金电气有限公司

Nanjing Nowking Electric Co., Ltd



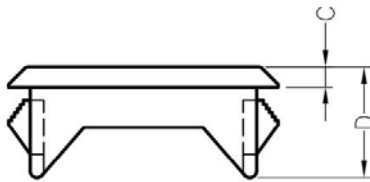
产品名称：扣式塞头

规格型号：KMX-47

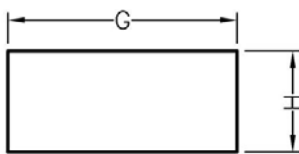
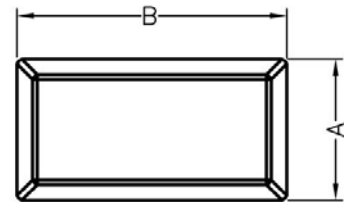
- ◆ MATERIAL: NYLON 66(UL)
- ◆ FLAME CLASS: 94V-0,94V-2
- ◆ COLOR: BLACK,NATURAL
- ◆ UNIT: mm

用途：可将多余的机壳出线口遮盖，装配容易。

KMX-47 结构图



CHASSIS THICKNESS E



MOUNTING HOLE

| PART NO | A | B | C | D | F | G | H | PACKAGE |
|---------|------|------|-----|------|---------|------|-----|---------|
| KMX-47 | 10.5 | 20.0 | 1.5 | 8.25 | 1.0~2.0 | 17.0 | 7.5 | 500 |

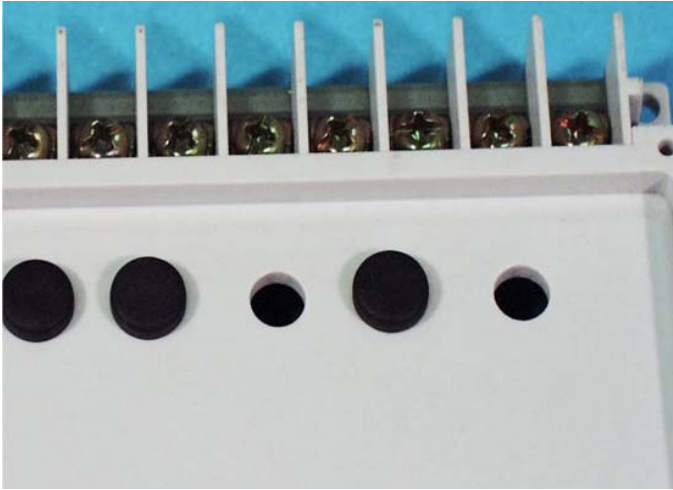
(规格 / 尺寸) 代码说明：

F： 装配板厚

总机/TEL:+86 25 85437901 85422485 85436028
[Http://www.nowking.com](http://www.nowking.com) E-mail: nk@nowking.com
 QQ: 260678075 WeChat:13770725488

南京诺金电气有限公司

Nanjing Nowking Electric Co., Ltd



产品名称：扣式塞头

规格型号：KMX-48

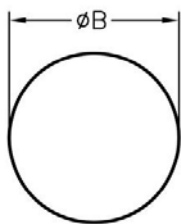
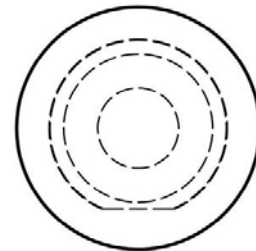
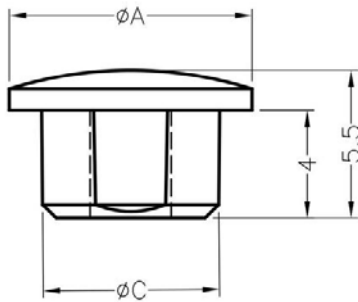
◆ MATERIAL: SILICON RUBBER

◆ COLOR: BLACK

◆ UNIT: mm

用途：可将多余的机壳出线口遮盖，装配容易。

KMX-48 结构图



MOUNTING HOLE

| PART NO | A | B | C | PACKAGE |
|---------|-----|------|-----|---------|
| KMX-48 | 9.0 | 6.35 | 6.6 | 1000 |

总机/TEL: +86 25 85437901 85422485 85436028
[Http://www.nowking.com](http://www.nowking.com) E-mail: nk@nowking.com
 QQ: 260678075 WeChat: 13770725488

南京诺金电气有限公司

Nanjing Nowking Electric Co., Ltd



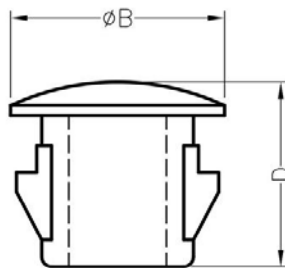
产品名称：扣式塞头

规格型号：KMX-49

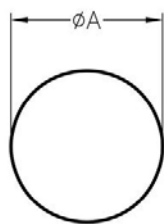
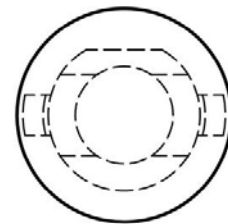
- ◆ MATERIAL: NYLON 66(UL)
- ◆ FLAME CLASS: 94V-0, 94V-2
- ◆ COLOR: BLACK, NATURAL, WHITE
- ◆ UNIT: mm

用途：可将多余的机壳出线口遮盖，装配容易。

KMX-49 结构图



THICKNESS E



MOUNTING HOLES

| PART NO | A | B | D | E | PACKAGE |
|---------|------|------|-----|-----|---------|
| KMX-49 | 10.3 | 11.9 | 6.4 | 1.6 | 1000 |

总机/TEL: +86 25 85437901 85422485 85436028
[Http://www.nowking.com](http://www.nowking.com) E-mail: nk@nowking.com
 QQ: 260678075 WeChat: 13770725488

南京诺金电气有限公司

Nanjing Nowking Electric Co., Ltd



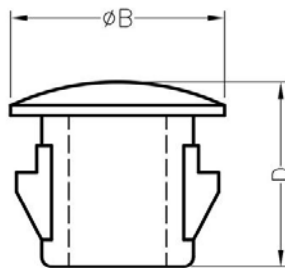
产品名称：扣式塞头

规格型号：KMX-50

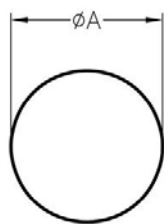
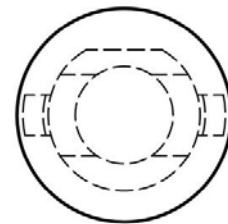
- ◆ MATERIAL: NYLON 66(UL)
- ◆ FLAME CLASS: 94V-0, 94V-2
- ◆ COLOR: BLACK, NATURAL, WHITE
- ◆ UNIT: mm

用途：可将多余的机壳出线口遮盖，装配容易。

KMX-50 结构图



THICKNESS E



MOUNTING HOLES

| PART NO | A | B | D | E | PACKAGE |
|---------|-----|-----|-----|-----|---------|
| KMX-50 | 7.0 | 8.7 | 6.4 | 1.8 | 2000 |

总机/TEL: +86 25 85437901 85422485 85436028
[Http://www.nowking.com](http://www.nowking.com) E-mail: nk@nowking.com
 QQ: 260678075 WeChat: 13770725488



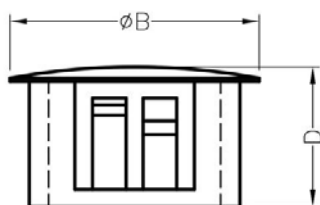
产品名称：扣式塞头

规格型号：KMX-51

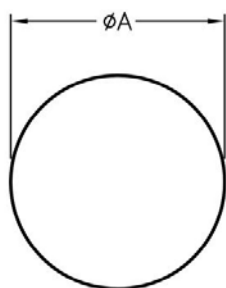
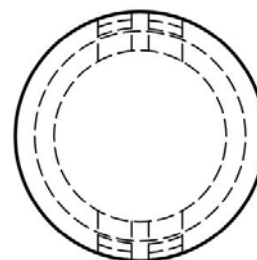
- ◆ MATERIAL: NYLON 66(UL)
- ◆ FLAME CLASS: 94V-0, 94V-2
- ◆ COLOR: BLACK, NATURAL, WHITE
- ◆ UNIT: mm

用途：可将多余的机壳出线口遮盖，装配容易。

KMX-51 结构图



THICKNESS E



MOUNTING HOLE

| PART NO | A | B | D | E | PACKAGE |
|---------|------|------|------|-----|---------|
| KMX-51 | 50.8 | 56.4 | 17.0 | 6.4 | 200 |

(规格 / 尺寸) 代码说明：

E : 装配板厚



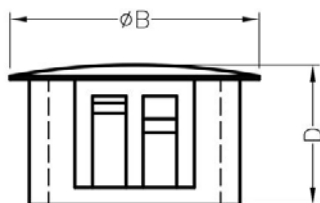
产品名称：扣式塞头

规格型号：KMX-52

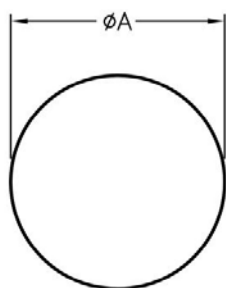
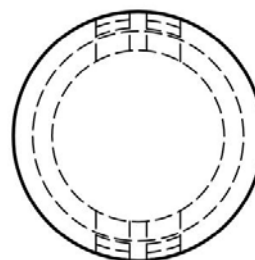
- ◆ MATERIAL: NYLON 66(UL)
- ◆ FLAME CLASS: 94V-0, 94V-2
- ◆ COLOR: BLACK, NATURAL, WHITE
- ◆ UNIT: mm

用途：可将多余的机壳出线口遮盖，装配容易。

KMX-52 结构图



THICKNESS E



MOUNTING HOLE

| PART NO | A | B | D | E | PACKAGE |
|---------|------|------|------|---------|---------|
| KMX-52 | 53.0 | 57.5 | 19.0 | 0.8~6.5 | 200 |

(规格 / 尺寸) 代码说明：

E : 装配板厚



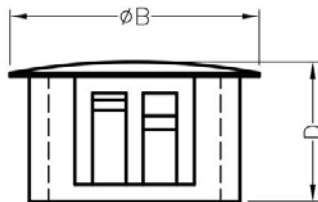
产品名称：扣式塞头

规格型号：KMX-53

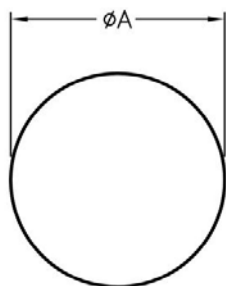
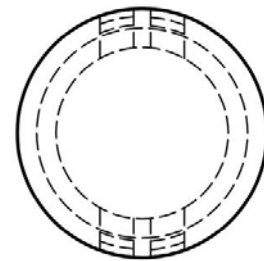
- ◆ MATERIAL: NYLON 66(UL)
- ◆ FLAME CLASS: 94V-0, 94V-2
- ◆ COLOR: BLACK, NATURAL, WHITE
- ◆ UNIT: mm

用途：可将多余的机壳出线口遮盖，装配容易。

KMX-53 结构图



THICKNESS E



MOUNTING HOLE

| PART NO | A | B | D | E | PACKAGE |
|---------|------|------|------|-----|---------|
| KMX-53 | 15.0 | 17.3 | 10.1 | 3.3 | 500 |

(规格 / 尺寸) 代码说明：

E : 装配板厚



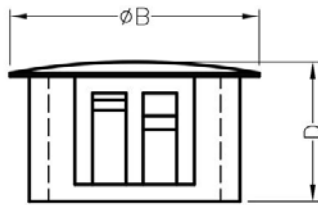
产品名称：扣式塞头

规格型号：KMX-54

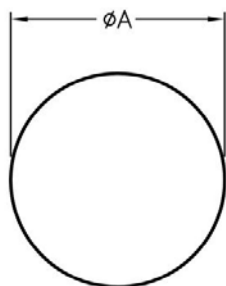
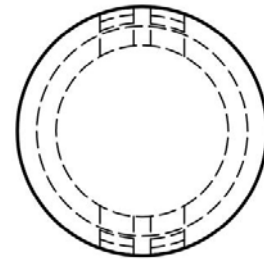
- ◆ MATERIAL: NYLON 66(UL)
- ◆ FLAME CLASS: 94V-0, 94V-2
- ◆ COLOR: BLACK, NATURAL, WHITE
- ◆ UNIT: mm

用途：可将多余的机壳出线口遮盖，装配容易。

KMX-54 结构图



THICKNESS E



MOUNTING HOLE

| PART NO | A | B | D | E | PACKAGE |
|---------|------|------|------|-----|---------|
| KMX-54 | 35.0 | 38.1 | 11.5 | 3.2 | 200 |

(规格 / 尺寸) 代码说明：

E : 装配板厚



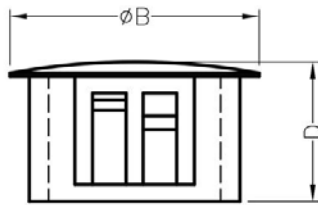
产品名称：扣式塞头

规格型号：KMX-55

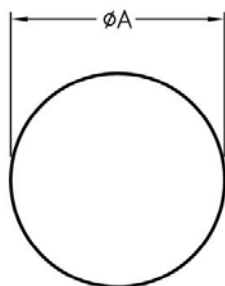
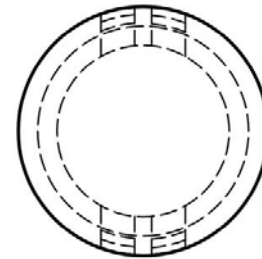
- ◆ MATERIAL: NYLON 66(UL)
- ◆ FLAME CLASS: 94V-0, 94V-2
- ◆ COLOR: BLACK, NATURAL, WHITE
- ◆ UNIT: mm

用途：可将多余的机壳出线口遮盖，装配容易。

KMX-55 结构图



THICKNESS E



MOUNTING HOLE

| PART NO | A | B | D | E | PACKAGE |
|---------|------|------|------|-----|---------|
| KMX-55 | 38.1 | 42.4 | 11.8 | 3.2 | 200 |

(规格 / 尺寸) 代码说明：

E : 装配板厚



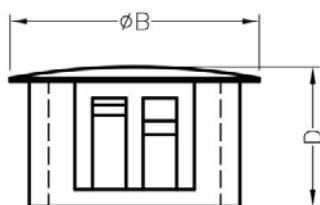
产品名称：扣式塞头

规格型号：KMX-56

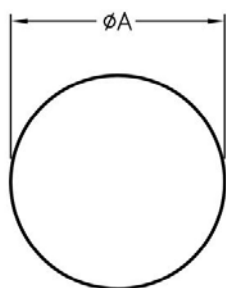
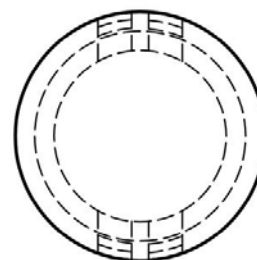
- ◆ MATERIAL: NYLON 66(UL)
- ◆ FLAME CLASS: 94V-0, 94V-2
- ◆ COLOR: BLACK, NATURAL, WHITE
- ◆ UNIT: mm

用途：可将多余的机壳出线口遮盖，装配容易。

KMX-56 结构图



THICKNESS E



MOUNTING HOLE

| PART NO | A | B | D | E | PACKAGE |
|---------|------|------|------|-----|---------|
| KMX-56 | 44.5 | 48.4 | 11.8 | 3.2 | 200 |

(规格 / 尺寸) 代码说明：

E : 装配板厚



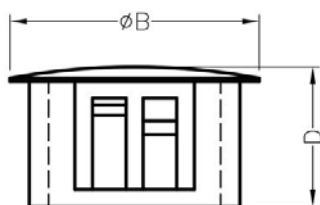
产品名称：扣式塞头

规格型号：KMX-57

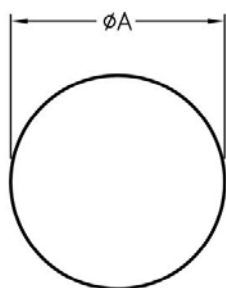
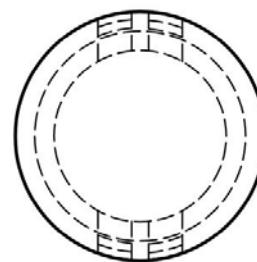
- ◆ MATERIAL: NYLON 66(UL)
- ◆ FLAME CLASS: 94V-0, 94V-2
- ◆ COLOR: BLACK, NATURAL, WHITE
- ◆ UNIT: mm

用途：可将多余的机壳出线口遮盖，装配容易。

KMX-57 结构图



THICKNESS E



MOUNTING HOLE

| PART NO | A | B | D | E | PACKAGE |
|---------|------|------|------|---------|---------|
| KMX-57 | 63.5 | 71.2 | 19.1 | 0.8~6.4 | 200 |

(规格 / 尺寸) 代码说明：

E : 装配板厚

南京诺金电气有限公司

Nanjing Nowking Electric Co., Ltd



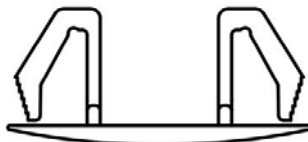
产品名称：扣式塞头

规格型号：KMX-58

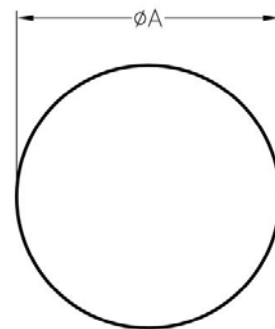
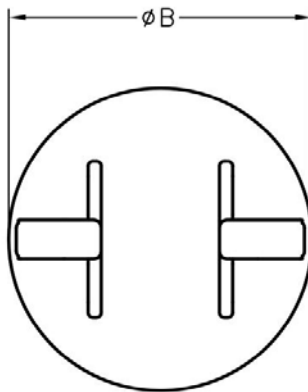
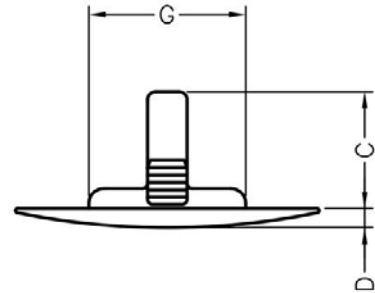
- ◆ MATERIAL: NYLON 66(UL)
- ◆ FLAME CLASS: 94V-0, 94V-2
- ◆ COLOR: BLACK, NATURAL, WHITE
- ◆ UNIT: mm

用途：可将多余的机壳出线口遮盖，装配容易。

KMX-58 结构图



CHASSIS THICKNESS E



MOUNTING HOLE

| PART NO | A | B | C | D | E | G | PACKAGE |
|---------|----------|------|------|-----|---------|-----|---------|
| KMX-58 | 9.5~11.0 | 16.0 | 12.6 | 1.6 | 0.8~3.2 | 8.5 | 500 |

(规格 / 尺寸) 代码说明：

E : 装配板厚

总机/TEL:+86 25 85437901 85422485 85436028
[Http://www.nowking.com](http://www.nowking.com) E-mail: nk@nowking.com
 QQ: 260678075 WeChat:13770725488

南京诺金电气有限公司

Nanjing Nowking Electric Co., Ltd



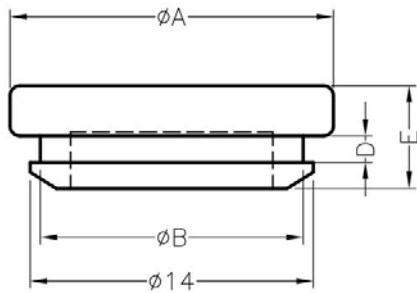
产品名称：扣式塞头

规格型号：KMX-59

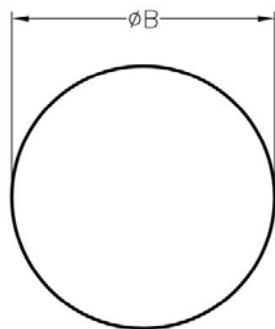
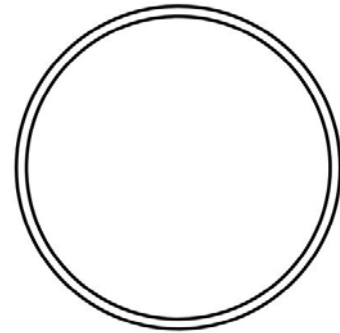
- ◆ MATERIAL: TPE
- ◆ COLOR: NATURAL, BLACK
- ◆ UNIT: mm

用途：可将多余的机壳出线口遮盖，装配容易。

KMX-59 结构图



CHASSIS THICKNESS F



MOUNTING HOLE

| PART NO | A | B | D | E | F | PACKAGE |
|---------|------|------|-----|-----|-----|---------|
| KMX-59 | 16.0 | 13.0 | 1.0 | 3.5 | 1.0 | 1000 |

总机/TEL: +86 25 85437901 85422485 85436028
[Http://www.nowking.com](http://www.nowking.com) E-mail: nk@nowking.com
 QQ: 260678075 WeChat: 13770725488

南京诺金电气有限公司

Nanjing Nowking Electric Co., Ltd



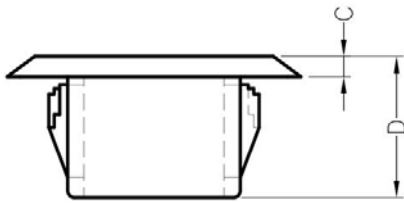
产品名称：扣式塞头

规格型号：KMX-60

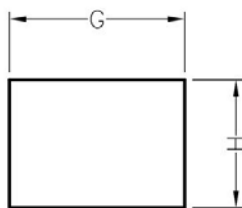
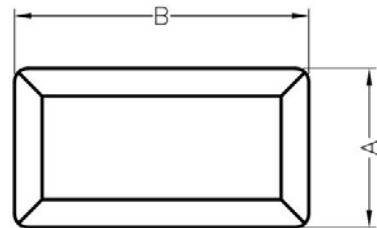
- ◆ MATERIAL: NYLON 66(UL)
- ◆ FLAME CLASS: 94V-0,94V-2
- ◆ COLOR: BLACK,GRAY,NATURAL
- ◆ UNIT: mm

用途：可将多余的机壳出线口遮盖，装配容易。

KMX-60 结构图



CHASSIS THICKNESS E



MOUNTING HOLE

| PART NO | A | B | C | D | F | G | H | PACKAGE |
|---------|------|------|-----|------|---------|------|-----|---------|
| KMX-60 | 11.9 | 35.0 | 1.5 | 10.5 | 0.8~3.5 | 26.0 | 9.5 | 500 |

(规格 / 尺寸) 代码说明：

F : 装配板厚

总机/TEL:+86 25 85437901 85422485 85436028
[Http://www.nowking.com](http://www.nowking.com) E-mail: nk@nowking.com
 QQ: 260678075 WeChat:13770725488

南京诺金电气有限公司

Nanjing Nowking Electric Co., Ltd



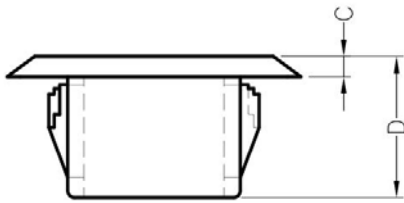
产品名称：扣式塞头

规格型号：KMX-61

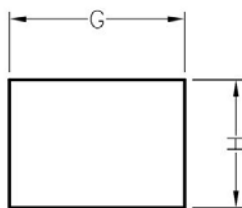
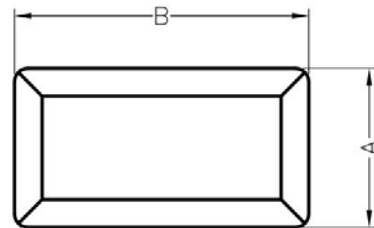
- ◆ MATERIAL: NYLON 66(UL)
- ◆ FLAME CLASS: 94V-0,94V-2
- ◆ COLOR: BLACK,GRAY,NATURAL
- ◆ UNIT: mm

用途：可将多余的机壳出线口遮盖，装配容易。

KMX-61 结构图



CHASSIS THICKNESS E



MOUNTING HOLE

| PART NO | A | B | C | D | F | G | H | PACKAGE |
|---------|------|------|-----|------|---------|------|-----|---------|
| KMX-61 | 12.0 | 16.0 | 1.5 | 10.5 | 1.4~3.5 | 13.0 | 9.5 | 500 |

(规格 / 尺寸) 代码说明：

F : 装配板厚

总机/TEL:+86 25 85437901 85422485 85436028
[Http://www.nowking.com](http://www.nowking.com) E-mail: nk@nowking.com
 QQ: 260678075 WeChat:13770725488

南京诺金电气有限公司

Nanjing Nowking Electric Co., Ltd

产品名称：扣式塞头

规格型号：KMX-62

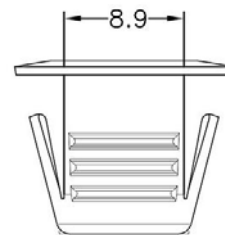
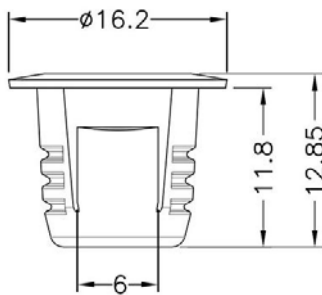
- ◆ MATERIAL: NYLON 66(UL)
- ◆ FLAME CLASS: 94V-0,94V-2
- ◆ COLOR: BLACK,NATURAL
- ◆ UNIT: mm

用途：可将多余的机壳出线口遮盖，装配容易。

1. 所有尺寸量测皆不含进胶口,胶口凸出1.2mm 之内.
2. 可使用同等材质



KMX-62 结构图



MOUNTING HOLE $\phi 12$
CHASSIS THICKNESS 3.0

| PART NO | PACKAGE |
|---------|---------|
| KMX-62 | 1000 |

南京诺金电气有限公司

Nanjing Nowking Electric Co., Ltd



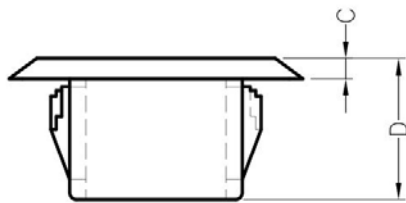
产品名称：扣式塞头

规格型号：KMX-63

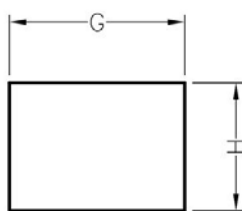
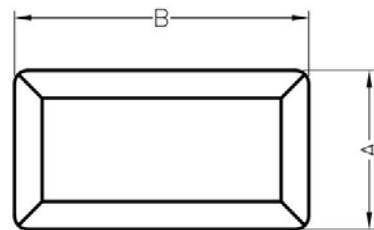
- ◆ MATERIAL: NYLON 66(UL)
- ◆ FLAME CLASS: 94V-0,94V-2
- ◆ COLOR: BLACK,GRAY,NATURAL
- ◆ UNIT: mm

用途：可将多余的机壳出线口遮盖，装配容易。

KMX-63 结构图



CHASSIS THICKNESS E



MOUNTING HOLE

| PART NO | A | B | C | D | F | G | H | PACKAGE |
|---------|------|------|-----|------|---------|------|------|---------|
| KMX-63 | 14.0 | 24.3 | 1.5 | 10.5 | 0.8~3.5 | 16.0 | 11.5 | 500 |

(规格 / 尺寸) 代码说明：

F : 装配板厚

总机/TEL:+86 25 85437901 85422485 85436028
[Http://www.nowking.com](http://www.nowking.com) E-mail: nk@nowking.com
 QQ: 260678075 WeChat:13770725488

南京诺金电气有限公司

Nanjing Nowking Electric Co., Ltd



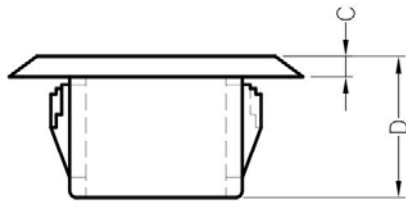
产品名称：扣式塞头

规格型号：KMX-64

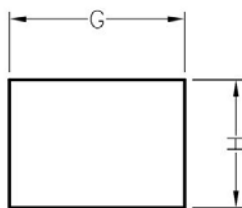
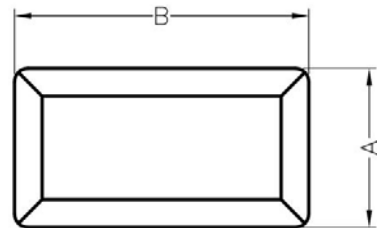
- ◆ MATERIAL: NYLON 66(UL)
- ◆ FLAME CLASS: 94V-0,94V-2
- ◆ COLOR: BLACK,GRAY,NATURAL
- ◆ UNIT: mm

用途：可将多余的机壳出线口遮盖，装配容易。

KMX-64 结构图



CHASSIS THICKNESS E



MOUNTING HOLE

| PART NO | A | B | C | D | F | G | H | PACKAGE |
|---------|-----|------|-----|------|---------|------|-----|---------|
| KMX-64 | 8.0 | 18.0 | 1.5 | 10.5 | 0.8~3.5 | 16.5 | 6.5 | 500 |

(规格 / 尺寸) 代码说明：

F：装配板厚

总机/TEL:+86 25 85437901 85422485 85436028
[Http://www.nowking.com](http://www.nowking.com) E-mail: nk@nowking.com
 QQ: 260678075 WeChat:13770725488

南京诺金电气有限公司

Nanjing Nowking Electric Co., Ltd



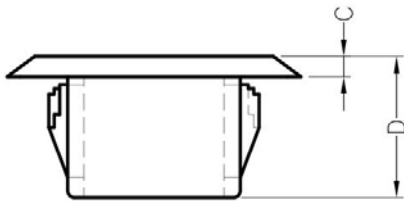
产品名称：扣式塞头

规格型号：KMX-65

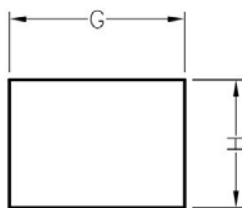
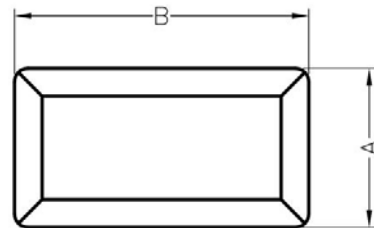
- ◆ MATERIAL: NYLON 66(UL)
- ◆ FLAME CLASS: 94V-0,94V-2
- ◆ COLOR: BLACK,GRAY,NATURAL
- ◆ UNIT: mm

用途：可将多余的机壳出线口遮盖，装配容易。

KMX-65 结构图



CHASSIS THICKNESS E



MOUNTING HOLE

| PART NO | A | B | C | D | F | G | H | PACKAGE |
|---------|------|------|-----|------|---------|------|------|---------|
| KMX-65 | 19.0 | 19.3 | 1.5 | 10.5 | 0.8~3.5 | 17.3 | 17.0 | 500 |

(规格 / 尺寸) 代码说明：

F：装配板厚

总机/TEL:+86 25 85437901 85422485 85436028
[Http://www.nowking.com](http://www.nowking.com) E-mail: nk@nowking.com
 QQ: 260678075 WeChat:13770725488

南京诺金电气有限公司

Nanjing Nowking Electric Co., Ltd



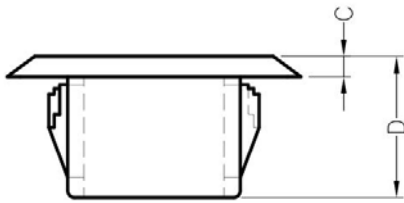
产品名称：扣式塞头

规格型号：KMX-66

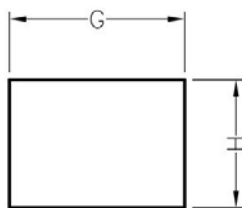
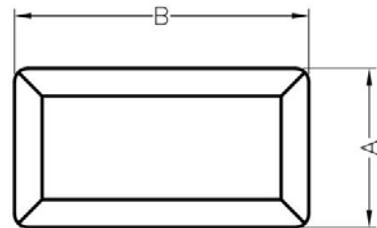
- ◆ MATERIAL: NYLON 66(UL)
- ◆ FLAME CLASS: 94V-0,94V-2
- ◆ COLOR: BLACK,GRAY,NATURAL
- ◆ UNIT: mm

用途：可将多余的机壳出线口遮盖，装配容易。

KMX-66 结构图



CHASSIS THICKNESS E



MOUNTING HOLE

| PART NO | A | B | C | D | F | G | H | PACKAGE |
|---------|------|------|-----|------|---------|------|------|---------|
| KMX-66 | 15.7 | 39.0 | 1.5 | 10.5 | 1.4~3.5 | 35.5 | 12.2 | 500 |

(规格 / 尺寸) 代码说明：

F：装配板厚

总机/TEL:+86 25 85437901 85422485 85436028
[Http://www.nowking.com](http://www.nowking.com) E-mail: nk@nowking.com
 QQ: 260678075 WeChat:13770725488

南京诺金电气有限公司

Nanjing Nowking Electric Co., Ltd



产品名称：扣式塞头

规格型号：KMX-67

◆ MATERIAL: PE

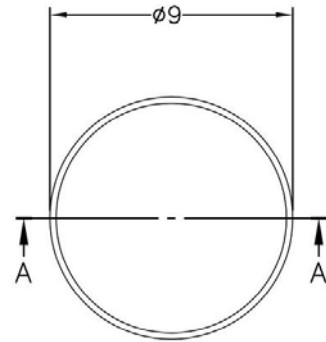
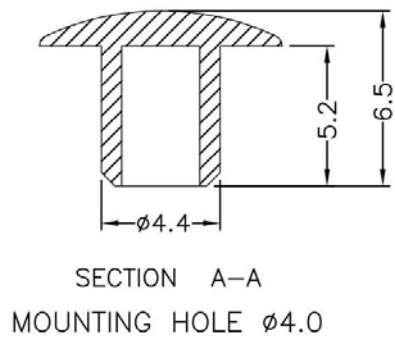
◆ COLOR: BLACK

◆ UNIT: mm

用途：可将多余的机壳出线口遮盖，装配容易。

3. 所有尺寸量测皆不含进胶口,胶口凸出1.2mm之内.
4. 可使用同等材质

KMX-67 结构图



| PART NO | PACKAGE |
|---------|---------|
| KMX-67 | 1000 |



产品名称：扣式塞头

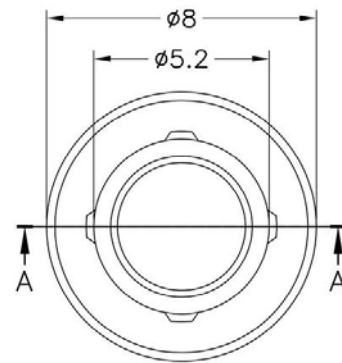
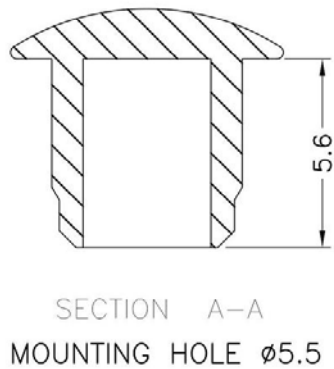
规格型号：KMX-68

- ◆ MATERIAL: NYLON 66(UL)
- ◆ FLAME CLASS: 94V-0, 94V-2
- ◆ COLOR: BLACK, NATURAL
- ◆ UNIT: mm

用途：可将多余的机壳出线口遮盖，装配容易。

5. 所有尺寸量测皆不含进胶口,胶口凸出1.2mm 之内.
6. 可使用同等材质

KMX-68 结构图



| PART NO | | PACKAGE |
|---------|--------|---------|
| | KMX-68 | 1000 |



产品名称：扣式塞头

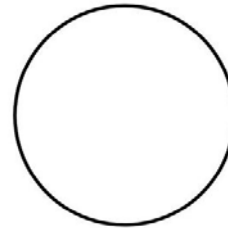
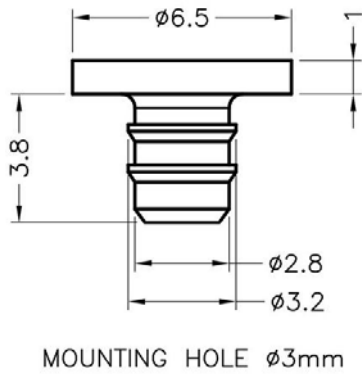
规格型号：KMX-69

- ◆ MATERIAL: NYLON 66(UL)
- ◆ FLAME CLASS: 94V-0, 94V-2
- ◆ COLOR: BLACK, NATURAL
- ◆ UNIT: mm

用途：可将多余的机壳出线口遮盖，装配容易。

7. 所有尺寸量测皆不含进胶口,胶口凸出1.2mm之内.
8. 可使用同等材质

KMX-69 结构图



| PART NO | | PACKAGE |
|---------|--------|---------|
| | KMX-69 | 1000 |



产品名称：扣式塞头

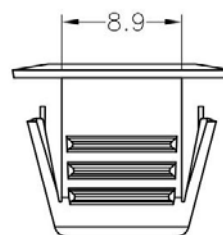
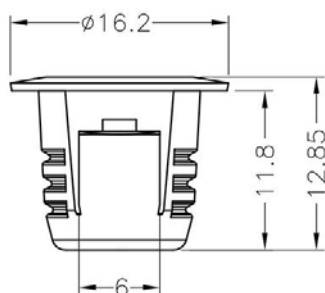
规格型号：KMX-70

- ◆ MATERIAL: NYLON 66(UL)
- ◆ FLAME CLASS: 94V-0, 94V-2
- ◆ COLOR: BLACK, NATURAL
- ◆ UNIT: mm

用途：可将多余的机壳出线口遮盖，装配容易。

9. 所有尺寸量测皆不含进胶口,胶口凸出 1.2mm 之内.
10. 可使用同等材质

KMX-70 结构图



MOUNTING HOLE: $\phi 12$
CHASSIS THICKNESS: 3.0

| PART NO | PACKAGE |
|---------|---------|
| KMX-70 | 1000 |



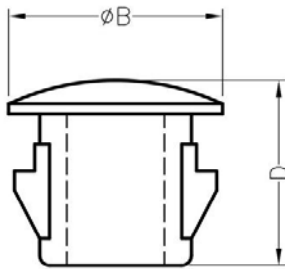
产品名称: 扣式塞头

规格型号: KMX-71

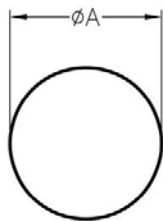
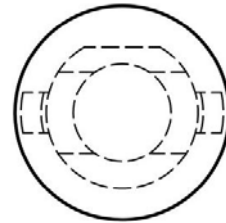
- ◆ MATERIAL: NYLON 66(UL)
- ◆ FLAME CLASS: 94V-0, 94V-2
- ◆ COLOR: BLACK, NATURAL, WHITE
- ◆ UNIT: mm

用途: 可将多余的机壳出线口遮盖, 装配容易。

KMX-71 结构图



THICKNESS E



MOUNTING HOLES

| PART NO | A | B | D | E | PACKAGE |
|---------|------|------|------|---------|---------|
| KMX-71 | 30.1 | 34.0 | 11.8 | 0.8~3.2 | 200 |



产品名称：扣式塞头

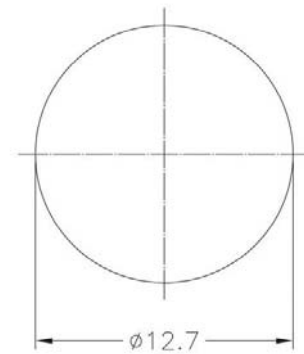
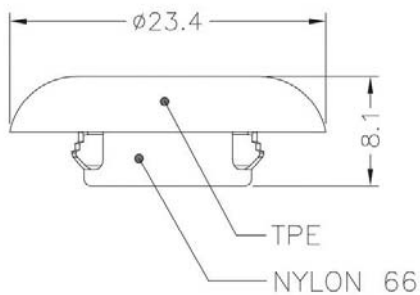
规格型号：KMX-72

- ◆ MATERIAL: NYLON 66(UL), TPE
- ◆ FLAME CLASS: 94V-2
- ◆ COLOR: BLACK
- ◆ UNIT: mm

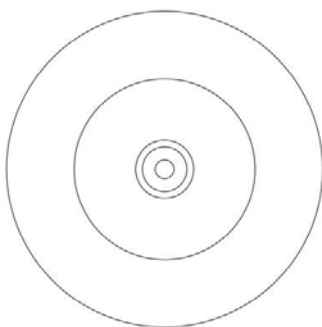
用途：可将多余的电源线扣机壳出线口遮盖，装配容易，轻微防水。

1. 内缩为正常现象
2. 可以使用同等材质

KMX-72 结构图



MOUNTING HOLE
PANEL THICKNESS 0.8~1.6



| PART NO | A | B | C | D | E | PACKAGE |
|---------|-------------|---------|-----|-------------|---------|---------|
| KMX-72 | $\phi 23.4$ | 2.0~5.1 | 8.1 | $\phi 12.7$ | 1.0~1.6 | 1000 |

(规格 / 尺寸) 代码说明：

E：装配板厚

总机/TEL: +86 25 85437901 85422485 85436028
[Http://www.nowking.com](http://www.nowking.com) E-mail: nk@nowking.com
 QQ: 260678075 WeChat: 13770725488



产品名称：扣式塞头

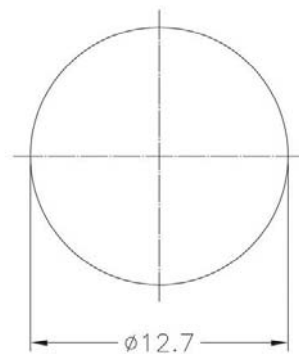
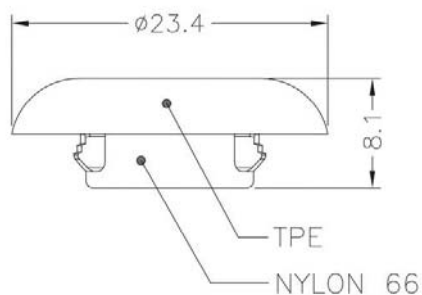
规格型号：KMX-73

- ◆ MATERIAL: NYLON 66(UL), TPE
- ◆ FLAME CLASS: 94V-2
- ◆ COLOR: BLACK
- ◆ UNIT: mm

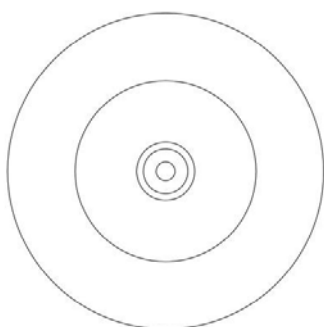
用途：可将多余的电源线扣机壳出线口遮盖，装配容易，轻微防水。

3. 内缩为正常现象
4. 可以使用同等材质

KMX-73 结构图



MOUNTING HOLE
PANEL THICKNESS 0.8~1.6



| PART NO | A | B | C | D | E | PACKAGE |
|---------|-------------|---------|-----|-------------|---------|---------|
| KMX-73 | $\phi 26.2$ | 3.3~9.5 | 8.1 | $\phi 15.9$ | 1.0~1.6 | 1000 |

(规格 / 尺寸) 代码说明：

E : 装配板厚

总机/TEL: +86 25 85437901 85422485 85436028
[Http://www.nowking.com](http://www.nowking.com) E-mail: nk@nowking.com
 QQ: 260678075 WeChat: 13770725488



产品名称：扣式塞头

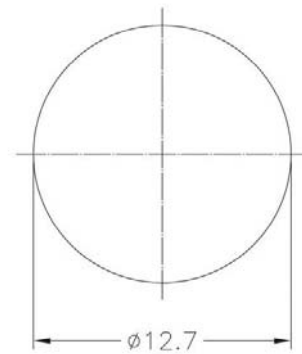
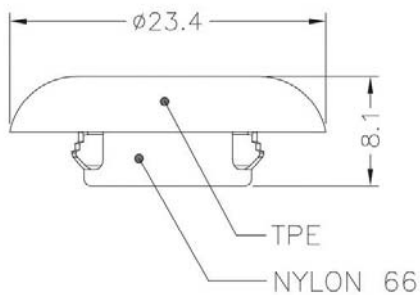
规格型号：KMX-74

- ◆ MATERIAL: NYLON 66(UL), TPE
- ◆ FLAME CLASS: 94V-2
- ◆ COLOR: BLACK
- ◆ UNIT: mm

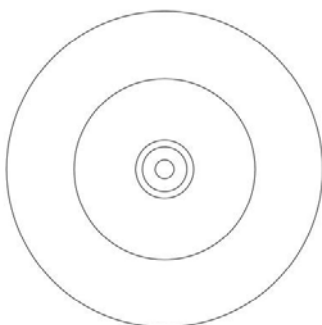
用途：可将多余的电源线扣机壳出线口遮盖，装配容易，轻微防水。

5. 内缩为正常现象
6. 可以使用同等材质

KMX-74 结构图



MOUNTING HOLE
PANEL THICKNESS 0.8~1.6



| PART NO | A | B | C | D | E | PACKAGE |
|---------|-------------|----------|-----|-------------|---------|---------|
| KMX-74 | $\phi 29.2$ | 4.4~10.2 | 8.1 | $\phi 19.1$ | 1.0~1.6 | 1000 |

(规格 / 尺寸) 代码说明：

E : 装配板厚

总机/TEL:+86 25 85437901 85422485 85436028
[Http://www.nowking.com](http://www.nowking.com) E-mail: nk@nowking.com
 QQ: 260678075 WeChat:13770725488



产品名称：扣式塞头

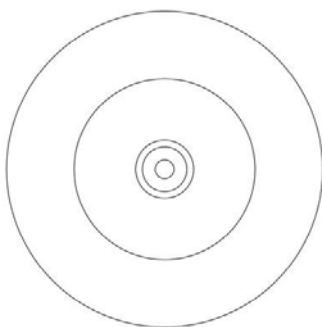
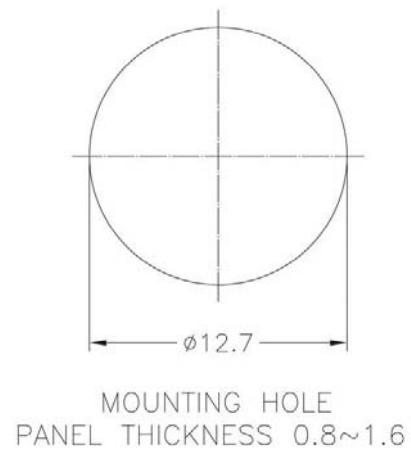
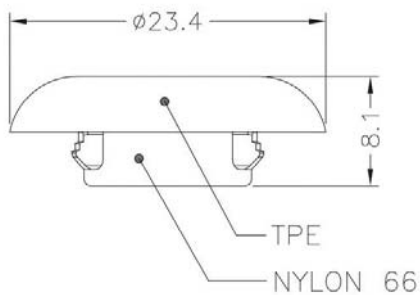
规格型号：KMX-75

- ◆ MATERIAL: NYLON 66(UL), TPE
- ◆ FLAME CLASS: 94V-2
- ◆ COLOR: BLACK
- ◆ UNIT: mm

用途：可将多余的电源线扣机壳出线口遮盖，装配容易，轻微防水。

7. 内缩为正常现象
8. 可以使用同等材质

KMX-75 结构图



| PART NO | A | B | C | D | E | PACKAGE |
|---------|-------|----------|-----|-------|---------|---------|
| KMX-75 | Ø32.5 | 3.3~11.4 | 8.1 | Ø22.2 | 1.0~1.6 | 500 |

(规格 / 尺寸) 代码说明：

E：装配板厚

总机/TEL:+86 25 85437901 85422485 85436028
[Http://www.nowking.com](http://www.nowking.com) E-mail: nk@nowking.com
 QQ: 260678075 WeChat: 13770725488



产品名称：扣式塞头

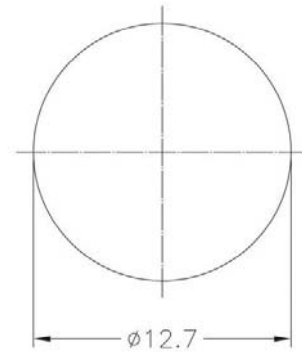
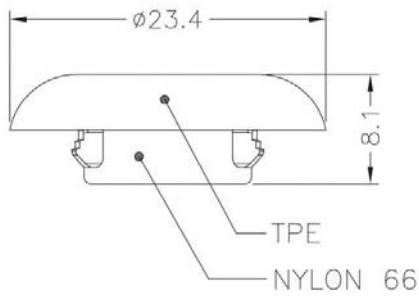
规格型号：KMX-76

- ◆ MATERIAL: NYLON 66(UL), TPE
- ◆ FLAME CLASS: 94V-2
- ◆ COLOR: BLACK
- ◆ UNIT: mm

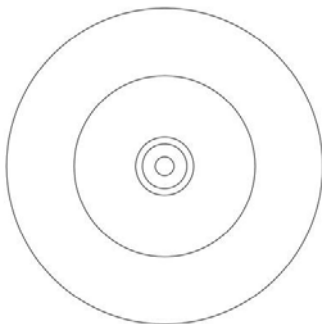
用途：可将多余的电源线扣机壳出线口遮盖，装配容易，轻微防水。

9. 内缩为正常现象
10. 可以使用同等材质

KMX-76 结构图



MOUNTING HOLE
PANEL THICKNESS 0.8~1.6



| PART NO | A | B | C | D | E | PACKAGE |
|---------|-------|----------|-----|-------|---------|---------|
| KMX-76 | Ø36.3 | 5.1~18.2 | 8.1 | Ø25.4 | 1.0~1.6 | 500 |

(规格 / 尺寸) 代码说明：

E : 装配板厚

总机/TEL:+86 25 85437901 85422485 85436028
[Http://www.nowking.com](http://www.nowking.com) E-mail: nk@nowking.com
 QQ: 260678075 WeChat:13770725488



产品名称：扣式塞头

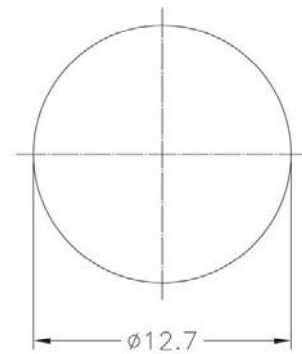
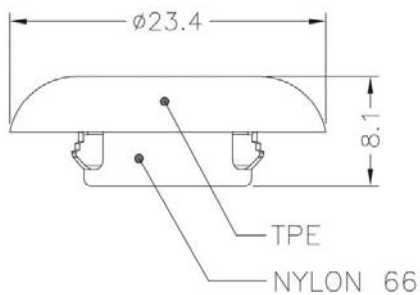
规格型号：KMX-77

- ◆ MATERIAL: NYLON 66(UL), TPE
- ◆ FLAME CLASS: 94V-2
- ◆ COLOR: BLACK
- ◆ UNIT: mm

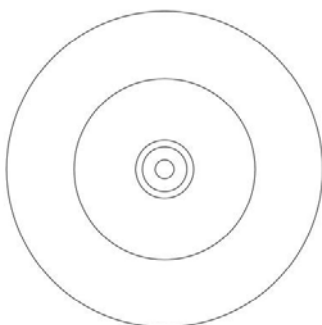
用途：可将多余的电源线扣机壳出线口遮盖，装配容易，轻微防水。

11. 内缩为正常现象
12. 可以使用同等材质

KMX-77 结构图



MOUNTING HOLE
PANEL THICKNESS 0.8~1.6



| PART NO | A | B | C | D | E | PACKAGE |
|---------|-------|----------|-----|-------|---------|---------|
| KMX-77 | Ø38.9 | 6.4~19.4 | 8.1 | Ø27.8 | 1.0~1.6 | 500 |

(规格 / 尺寸) 代码说明：

E : 装配板厚

总机/TEL:+86 25 85437901 85422485 85436028
[Http://www.nowking.com](http://www.nowking.com) E-mail: nk@nowking.com
 QQ: 260678075 WeChat:13770725488

