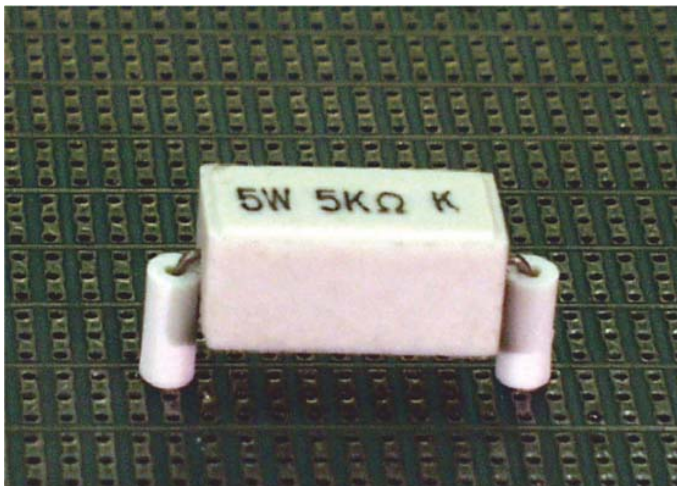


南京诺金电气有限公司

Nanjing Nowking Electric Co., Ltd

垫片样本



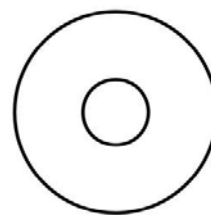
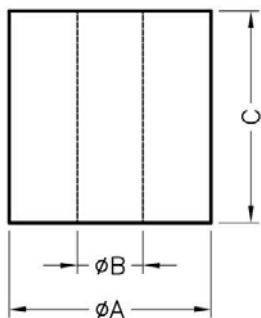
产品名称: 垫片

规格型号: DPW01

- ◆ MATERIAL: PBT(UL)
- ◆ FLAME CLASS: 94V-2, 94V-0
- ◆ COLOR: NATURAL, WHITE
- ◆ UNIT: mm

用途: 用于零件, 如高瓦特数电阻接脚之垫高, 避免热气积存于 PC 板上。

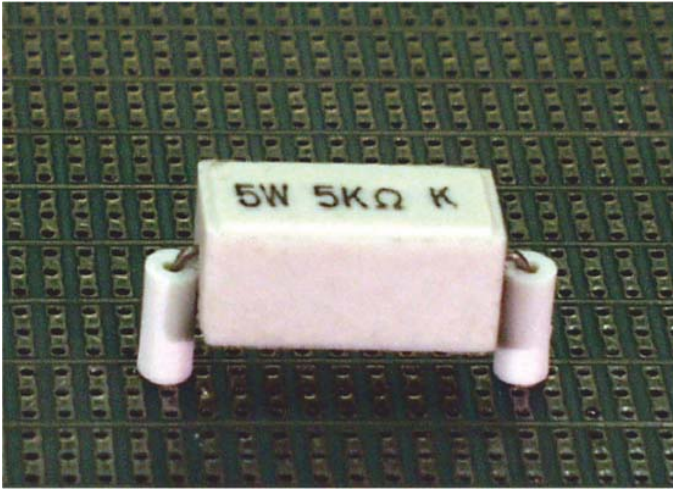
DPW01 结构图



	PART NO	A	B	C	PACKAGE
	DPW01	4.0	1.4	4.2	2000

南京诺金电气有限公司

Nanjing Nowking Electric Co., Ltd



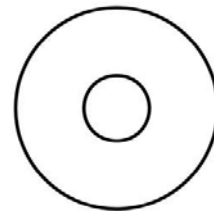
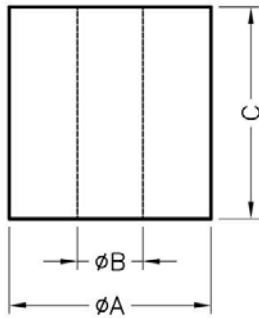
产品名称: 垫片

规格型号: DPW02

- ◆ MATERIAL: PBT(UL)
- ◆ FLAME CLASS: 94V-2, 94V-0
- ◆ COLOR: NATURAL, WHITE
- ◆ UNIT: mm

用途: 用于零件, 如高瓦特数电阻接脚之垫高, 避免热气积存于 PC 板上。

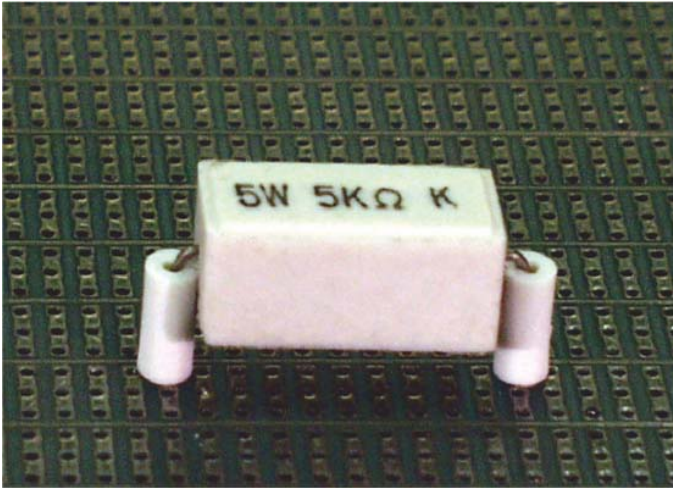
DPW02 结构图



	PART NO	A	B	C	PACKAGE
	DPW02	4.5	1.8	4.2	2000

南京诺金电气有限公司

Nanjing Nowking Electric Co., Ltd



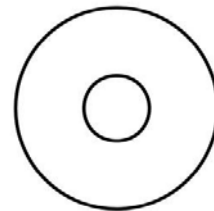
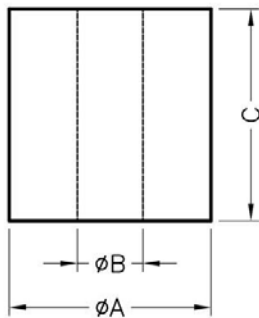
产品名称: 垫片

规格型号: DPW03

- ◆ MATERIAL: PBT(UL)
- ◆ FLAME CLASS: 94V-2, 94V-0
- ◆ COLOR: NATURAL, WHITE
- ◆ UNIT: mm

用途: 用于零件, 如高瓦特数电阻接脚之垫高, 避免热气积存于 PC 板上。

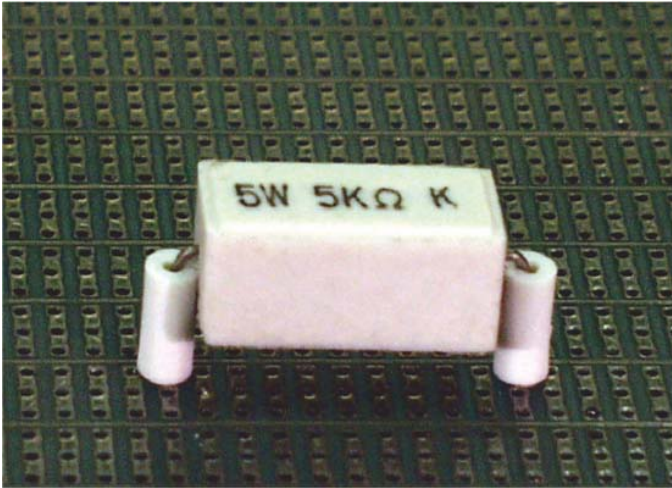
DPW03 结构图



	PART NO	A	B	C	PACKAGE
	DPW03	4.0	1.4	8.0	1000

南京诺金电气有限公司

Nanjing Nowking Electric Co., Ltd



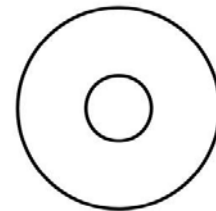
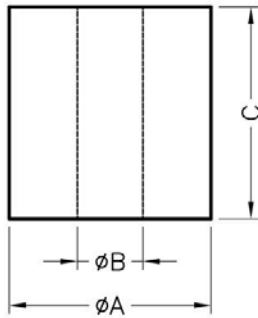
产品名称: 垫片

规格型号: DPW04

- ◆ MATERIAL: PBT(UL)
- ◆ FLAME CLASS: 94V-2, 94V-0
- ◆ COLOR: NATURAL, WHITE
- ◆ UNIT: mm

用途: 用于零件, 如高瓦特数电阻接脚之垫高, 避免热气积存于 PC 板上。

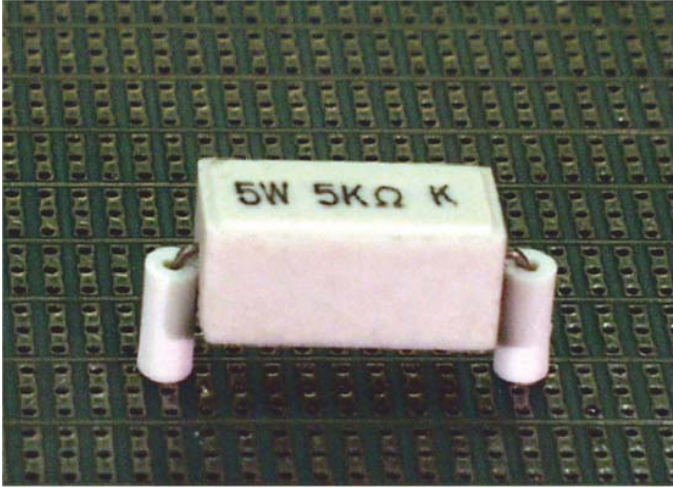
DPW04 结构图



	PART NO	A	B	C	PACKAGE
	DPW04	4.0	1.3	3.0	2000

南京诺金电气有限公司

Nanjing Nowking Electric Co., Ltd



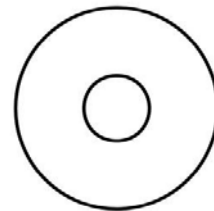
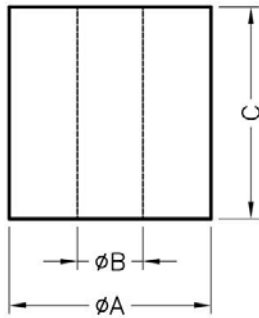
产品名称: 垫片

规格型号: DPW05

- ◆ MATERIAL: PBT(UL)
- ◆ FLAME CLASS: 94V-2, 94V-0
- ◆ COLOR: NATURAL, WHITE
- ◆ UNIT: mm

用途: 用于零件, 如高瓦特数电阻接脚之垫高, 避免热气积存于 PC 板上。

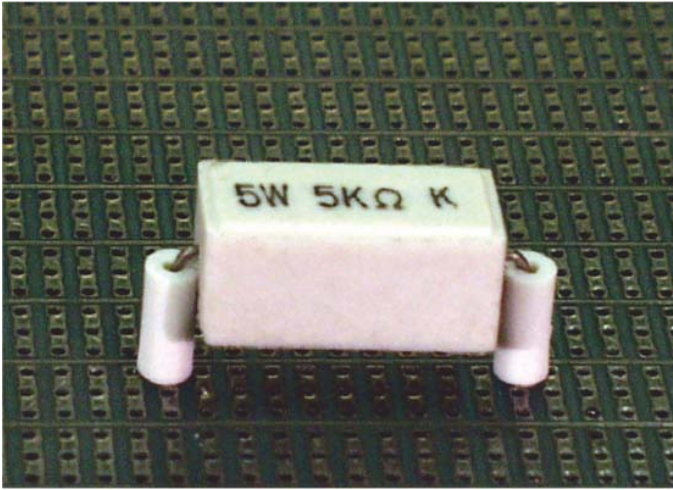
DPW05 结构图



	PART NO	A	B	C	PACKAGE
	DPW05	3.5	1.3	3.6	2000

南京诺金电气有限公司

Nanjing Nowking Electric Co., Ltd



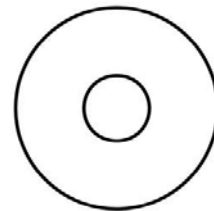
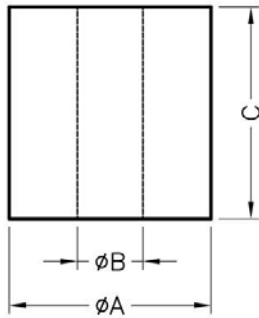
产品名称: 垫片

规格型号: DPW06

- ◆ MATERIAL: PBT(UL)
- ◆ FLAME CLASS: 94V-2, 94V-0
- ◆ COLOR: NATURAL, WHITE
- ◆ UNIT: mm

用途: 用于零件, 如高瓦特数电阻接脚之垫高, 避免热气积存于 PC 板上。

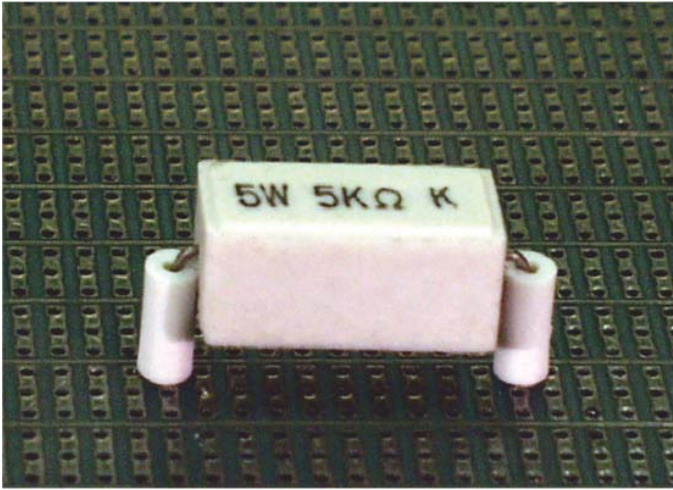
DPW06 结构图



	PART NO	A	B	C	PACKAGE
	DPW06	5.0	2.0	2.0	2000

南京诺金电气有限公司

Nanjing Nowking Electric Co., Ltd



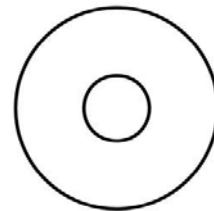
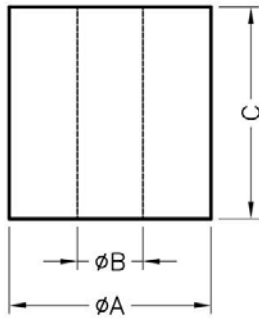
产品名称: 垫片

规格型号: DPW07

- ◆ MATERIAL: PBT(UL)
- ◆ FLAME CLASS: 94V-2, 94V-0
- ◆ COLOR: NATURAL, WHITE
- ◆ UNIT: mm

用途: 用于零件, 如高瓦特数电阻接脚之垫高, 避免热气积存于 PC 板上。

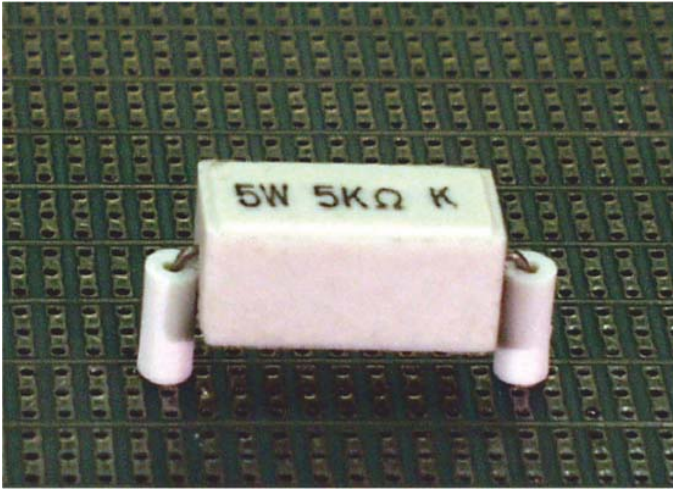
DPW07 结构图



	PART NO	A	B	C	PACKAGE
	DPW07	3.2	1.4	2.5	2000

南京诺金电气有限公司

Nanjing Nowking Electric Co., Ltd



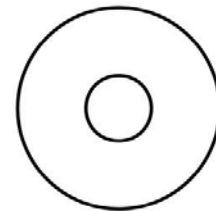
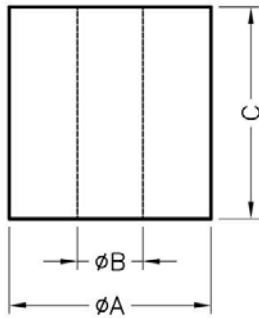
产品名称: 垫片

规格型号: DPW08

- ◆ MATERIAL: PBT(UL)
- ◆ FLAME CLASS: 94V-2, 94V-0
- ◆ COLOR: NATURAL, WHITE
- ◆ UNIT: mm

用途: 用于零件, 如高瓦特数电阻接脚之垫高, 避免热气积存于 PC 板上。

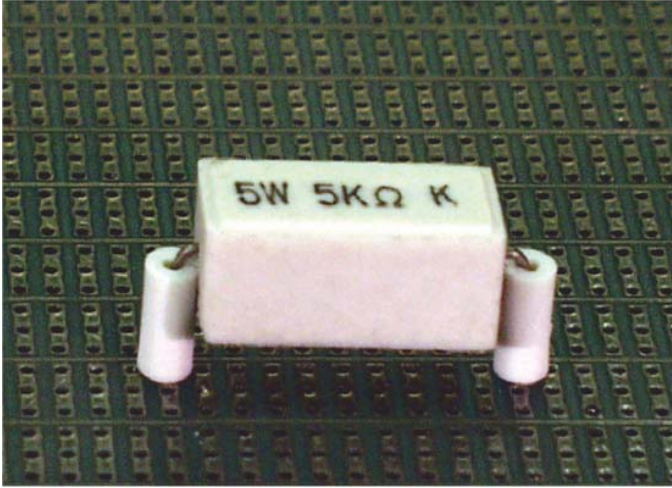
DPW08 结构图



	PART NO	A	B	C	PACKAGE
	DPW08	3.2	1.4	1.0	2000

南京诺金电气有限公司

Nanjing Nowking Electric Co., Ltd



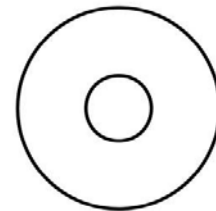
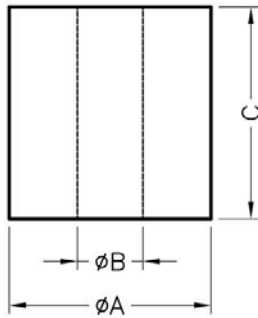
产品名称: 垫片

规格型号: DPW09

- ◆ MATERIAL: PBT(UL)
- ◆ FLAME CLASS: 94V-2, 94V-0
- ◆ COLOR: NATURAL, WHITE
- ◆ UNIT: mm

用途: 用于零件, 如高瓦特数电阻接脚之垫高, 避免热气积存于 PC 板上。

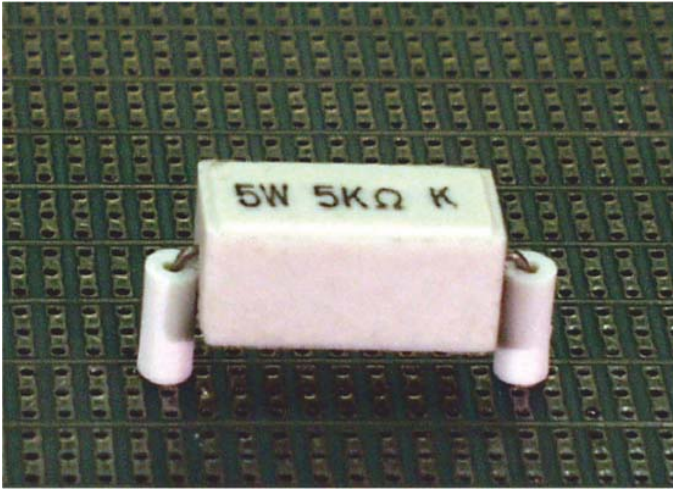
DPW09 结构图



	PART NO	A	B	C	PACKAGE
	DPW09	2.4	1.3	3.1	2000

南京诺金电气有限公司

Nanjing Nowking Electric Co., Ltd



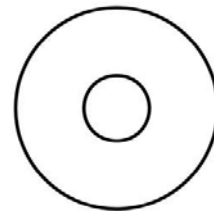
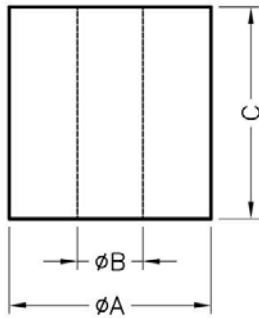
产品名称: 垫片

规格型号: DPW10

- ◆ MATERIAL: PBT(UL)
- ◆ FLAME CLASS: 94V-2, 94V-0
- ◆ COLOR: NATURAL, WHITE
- ◆ UNIT: mm

用途: 用于零件, 如高瓦特数电阻接脚之垫高, 避免热气积存于 PC 板上。

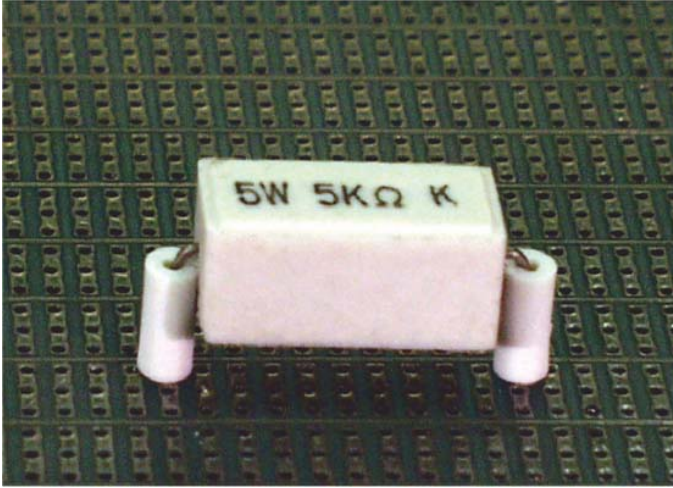
DPW10 结构图



	PART NO	A	B	C	PACKAGE
	DPW10	4.4	1.6	7.0	1000

南京诺金电气有限公司

Nanjing Nowking Electric Co., Ltd



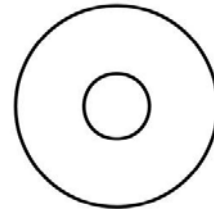
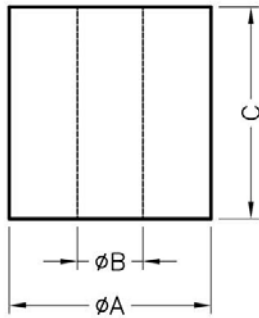
产品名称: 垫片

规格型号: DPW11

- ◆ MATERIAL: PBT(UL)
- ◆ FLAME CLASS: 94V-2, 94V-0
- ◆ COLOR: NATURAL, WHITE
- ◆ UNIT: mm

用途: 用于零件, 如高瓦特数电阻接脚之垫高, 避免热气积存于 PC 板上。

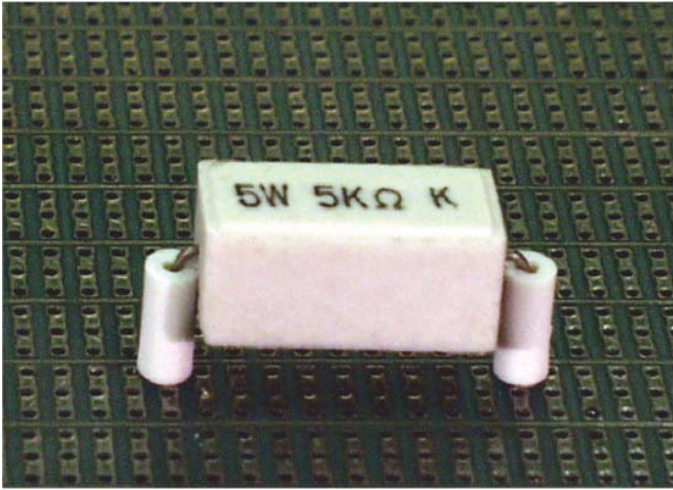
DPW11 结构图



	PART NO	A	B	C	PACKAGE
	DPW11	2.5	1.25	5.0	2000

南京诺金电气有限公司

Nanjing Nowking Electric Co., Ltd



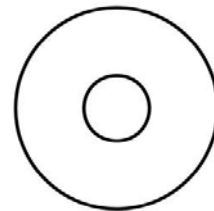
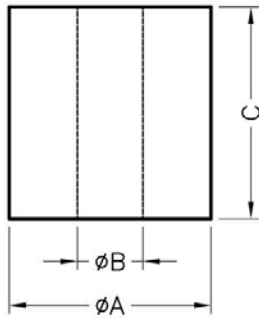
产品名称: 垫片

规格型号: DPW12

- ◆ MATERIAL: PBT(UL)
- ◆ FLAME CLASS: 94V-2, 94V-0
- ◆ COLOR: NATURAL, WHITE
- ◆ UNIT: mm

用途: 用于零件, 如高瓦特数电阻接脚之垫高, 避免热气积存于 PC 板上。

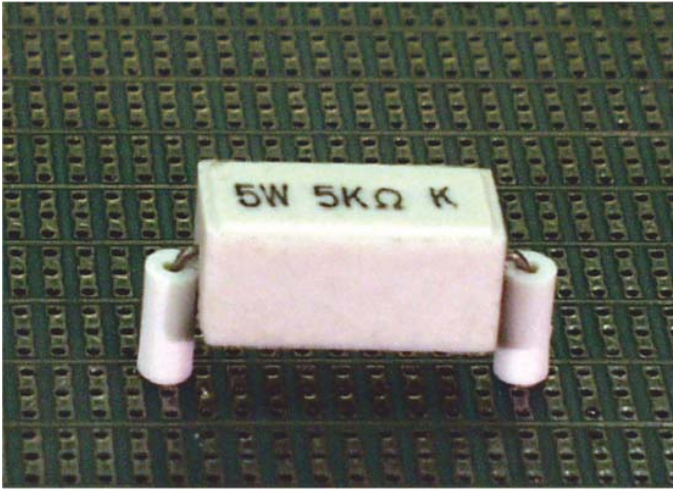
DPW12 结构图



	PART NO	A	B	C	PACKAGE
	DPW12	2.2	0.8	5.0	2000

南京诺金电气有限公司

Nanjing Nowking Electric Co., Ltd



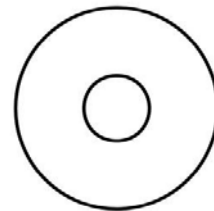
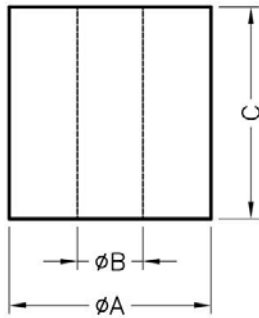
产品名称: 垫片

规格型号: DPW13

- ◆ MATERIAL: PBT(UL)
- ◆ FLAME CLASS: 94V-2, 94V-0
- ◆ COLOR: NATURAL, WHITE
- ◆ UNIT: mm

用途: 用于零件, 如高瓦特数电阻接脚之垫高, 避免热气积存于 PC 板上。

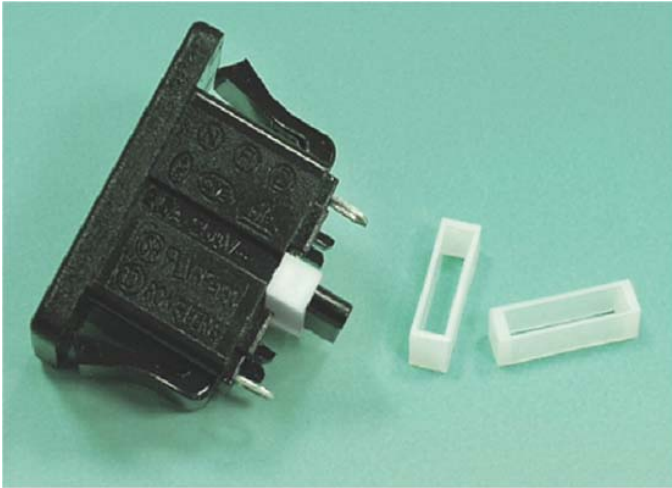
DPW13 结构图



	PART NO	A	B	C	PACKAGE
	DPW13	2.8	1.3	1.8	2000

南京诺金电气有限公司

Nanjing Nowking Electric Co., Ltd



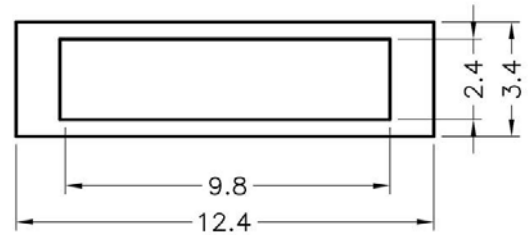
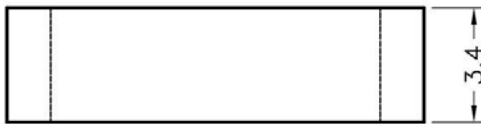
产品名称：垫片

规格型号：DPW14

- ◆ MATERIAL: PBT(UL)
- ◆ FLAME CLASS: 94V-2, 94V-0
- ◆ COLOR: NATURAL, BLACK
- ◆ UNIT: mm

用途：用于电源插座接点间之绝缘。

DPW14 结构图



	PART NO	PACKAGE
	DPW14	2000

南京诺金电气有限公司

Nanjing Nowking Electric Co., Ltd



产品名称: 垫片

规格型号: DPW15

◆ MATERIAL: LDPE

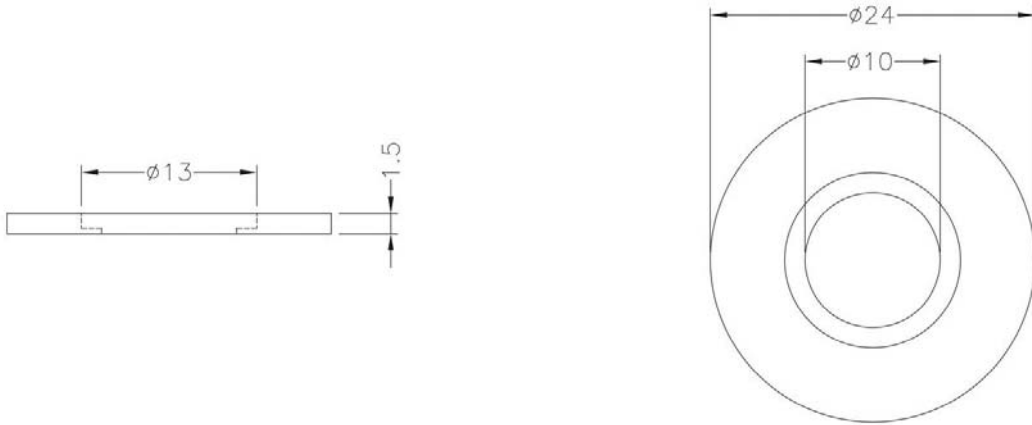
◆ COLOR: BLACK

◆ UNIT: mm

用途: 作为零件垫片。

可使用同等材质

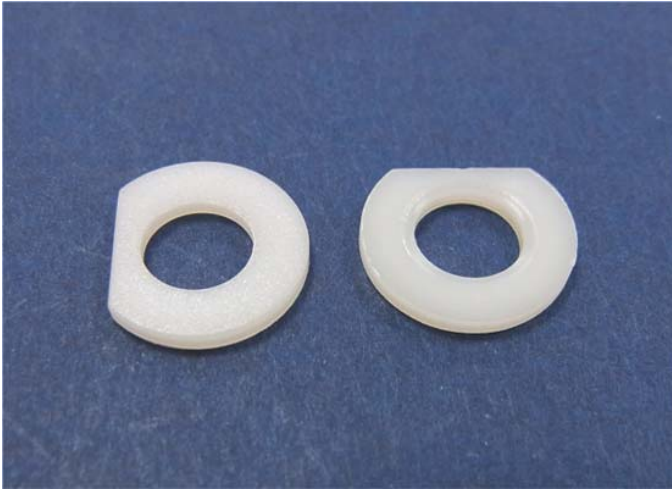
DPW15 结构图



	PART NO	PACKAGE
	DPW15	1000

南京诺金电气有限公司

Nanjing Nowking Electric Co., Ltd



产品名称：垫片

规格型号：DPW16

◆MATERIAL:LDPE

◆COLOR:BLACK

◆UNIT: mm

用途：作为零件垫片。

可使用同等材质

DPW16 结构图



	PART NO	A	B	C	PACKAGE
	DPW16	12.7	6.35	1.58	1000

南京诺金电气有限公司

Nanjing Nowking Electric Co., Ltd



产品名称：垫片

规格型号：DPW17

◆ MATERIAL: LDPE

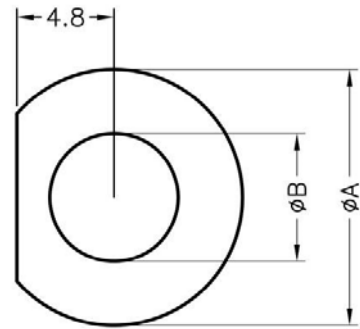
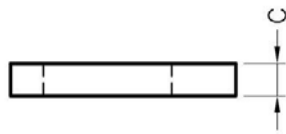
◆ COLOR: BLACK

◆ UNIT: mm

用途：作为零件垫片。

可使用同等材质

DPW17 结构图



	PART NO	A	B	C	PACKAGE
	DPW17	12.7	6.35	6.35	1000

南京诺金电气有限公司

Nanjing Nowking Electric Co., Ltd



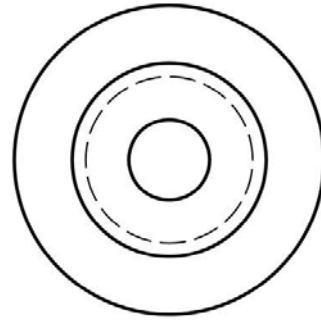
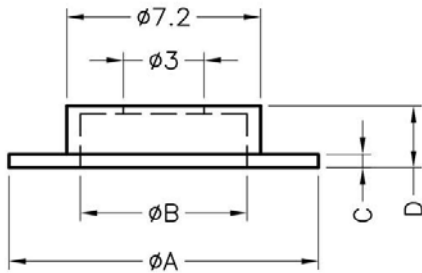
产品名称: 垫片

规格型号: DPW18

- ◆ MATERIAL: NYLON 66(UL)
- ◆ FLAME CLASS: 94V-2, 94V-0
- ◆ COLOR: NATURAL, BLACK
- ◆ UNIT: mm

用途: 螺丝垫片, 耐热性良好。

DPW18 结构图



	PART NO	A	B	C	D	PACKAGE
	DPW18	11.5	6.2	0.5	2.3	2000

南京诺金电气有限公司

Nanjing Nowking Electric Co., Ltd



产品名称: 垫片

规格型号: DPW19

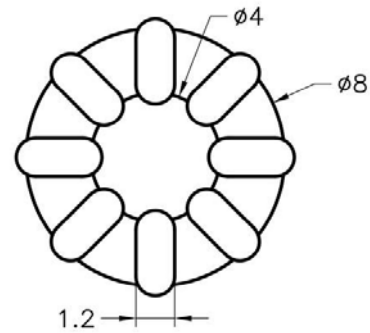
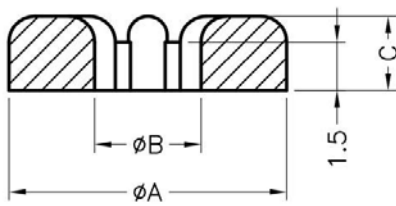
◆ MATERIAL: TPE

◆ COLOR: BLACK, RED

◆ UNIT: mm

用途: 风扇螺丝垫片, 抗震性良好。

DPW19 结构图



	PART NO	A	B	C	PACKAGE
	DPW19	8.6	3.3	2.3	2000

南京诺金电气有限公司

Nanjing Nowking Electric Co., Ltd



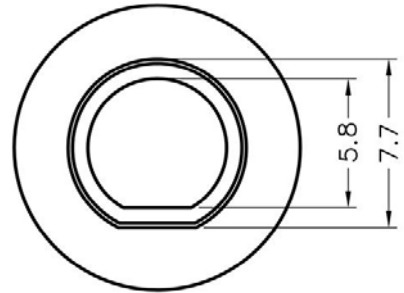
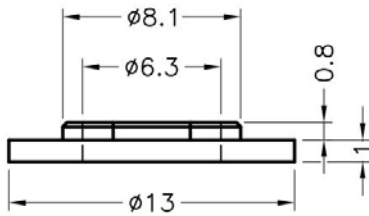
产品名称: 垫片

规格型号: DPW20

- ◆ MATERIAL: NYLON 66(UL)
- ◆ FLAME CLASS: 94V-2, 94V-0
- ◆ COLOR: NATURAL, BLACK
- ◆ UNIT: mm

用途: 可配合螺丝, 固定天线端子之垫片。

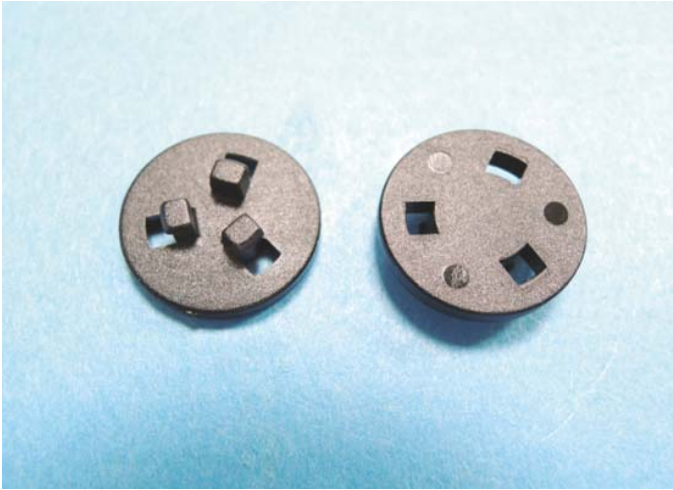
DPW20 结构图



	PART NO	PACKAGE
	DPW20	2000

南京诺金电气有限公司

Nanjing Nowking Electric Co., Ltd



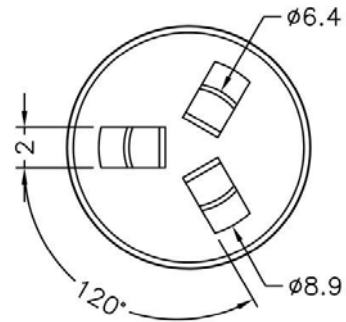
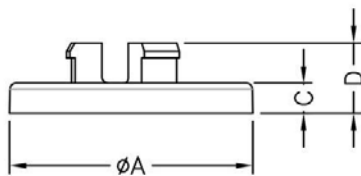
产品名称：垫片

规格型号：DPW21

- ◆ MATERIAL: PC(UL)
- ◆ FLAME CLASS: 94V-2, 94V-0
- ◆ COLOR: NATURAL, BLACK
- ◆ UNIT: mm

用途：风扇螺丝垫片，抗震性良好。

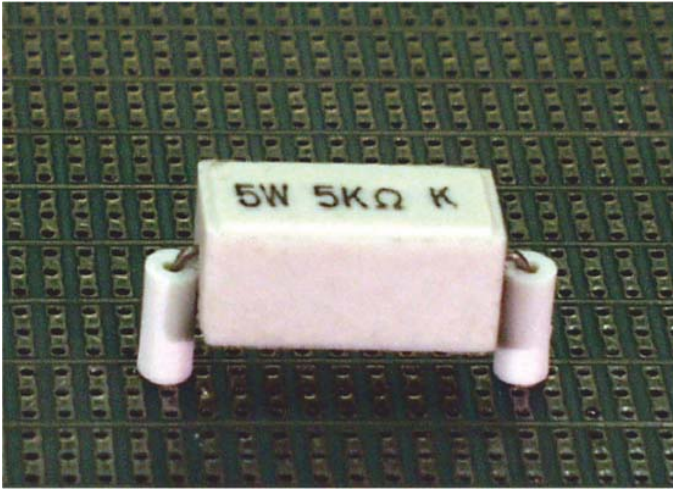
DPW21 结构图



	PART NO	A	C	D	PACKAGE
	DPW21	12.1	1.5	3.5	2000

南京诺金电气有限公司

Nanjing Nowking Electric Co., Ltd



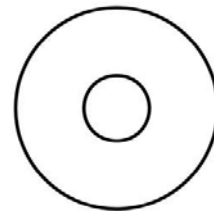
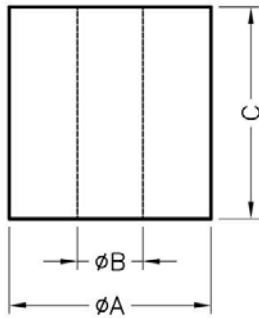
产品名称: 垫片

规格型号: DPW22

- ◆ MATERIAL: PBT(UL)
- ◆ FLAME CLASS: 94V-2, 94V-0
- ◆ COLOR: NATURAL, WHITE
- ◆ UNIT: mm

用途: 用于零件, 如高瓦特数电阻接脚之垫高, 避免热气积存于 PC 板上。

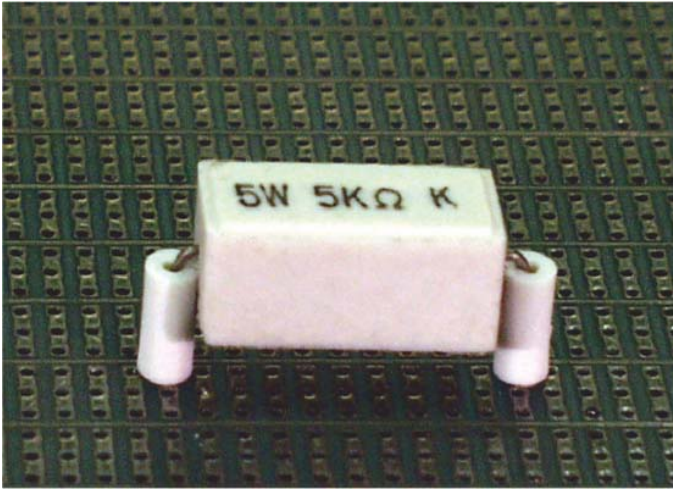
DPW22 结构图



	PART NO	A	B	C	PACKAGE
	DPW22	2.5	2.5	1.1	2000

南京诺金电气有限公司

Nanjing Nowking Electric Co., Ltd



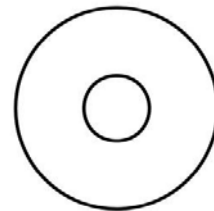
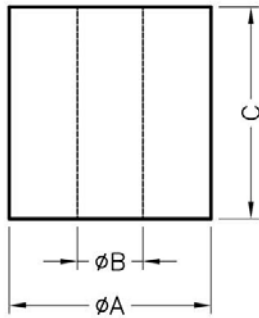
产品名称: 垫片

规格型号: DPW23

- ◆ MATERIAL: PBT(UL)
- ◆ FLAME CLASS: 94V-2, 94V-0
- ◆ COLOR: NATURAL, WHITE
- ◆ UNIT: mm

用途: 用于零件, 如高瓦特数电阻接脚之垫高, 避免热气积存于 PC 板上。

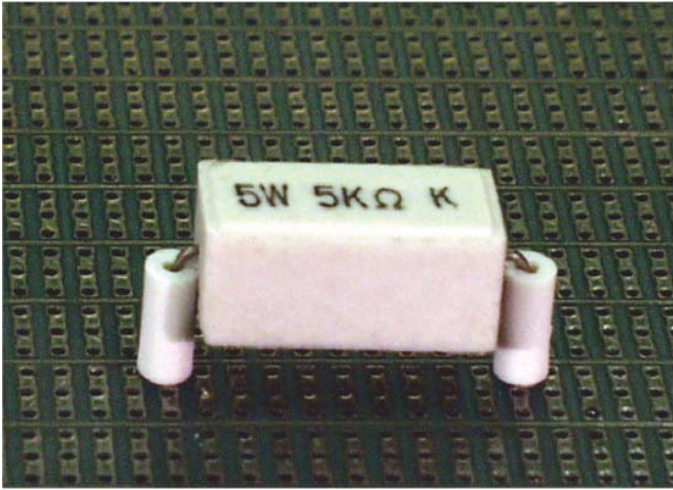
DPW23 结构图



	PART NO	A	B	C	PACKAGE
	DPW23	7.9	3.2	0.8	1000

南京诺金电气有限公司

Nanjing Nowking Electric Co., Ltd



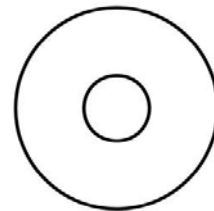
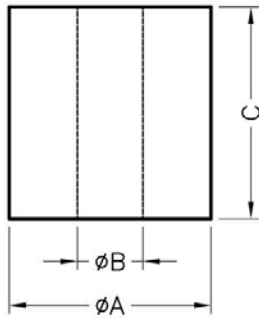
产品名称: 垫片

规格型号: DPW24

- ◆ MATERIAL: PBT(UL)
- ◆ FLAME CLASS: 94V-2, 94V-0
- ◆ COLOR: NATURAL, WHITE
- ◆ UNIT: mm

用途: 用于零件, 如高瓦特数电阻接脚之垫高, 避免热气积存于 PC 板上。

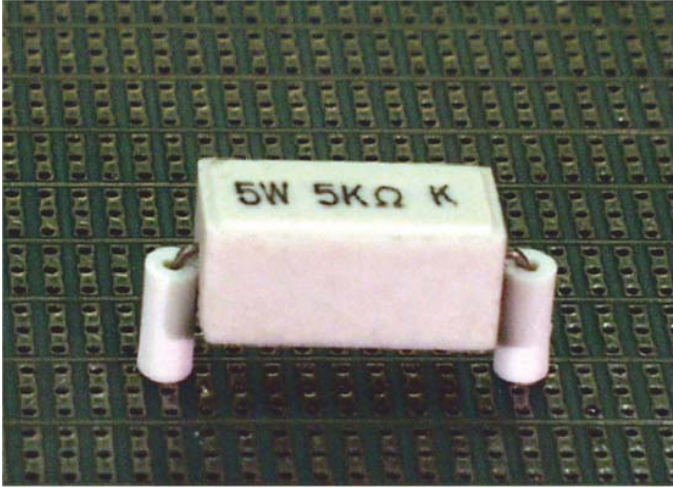
DPW24 结构图



	PART NO	A	B	C	PACKAGE
	DPW24	2.2	0.9	10.5	1000

南京诺金电气有限公司

Nanjing Nowking Electric Co., Ltd



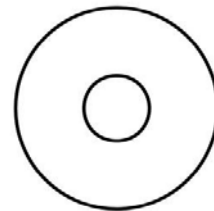
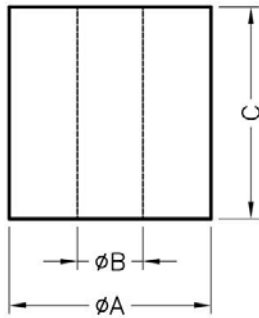
产品名称: 垫片

规格型号: DPW25

- ◆ MATERIAL: PBT(UL)
- ◆ FLAME CLASS: 94V-2, 94V-0
- ◆ COLOR: NATURAL, WHITE
- ◆ UNIT: mm

用途: 用于零件, 如高瓦特数电阻接脚之垫高, 避免热气积存于 PC 板上。

DPW25 结构图



	PART NO	A	B	C	PACKAGE
	DPW25	3.2	0.8	1.5	2000