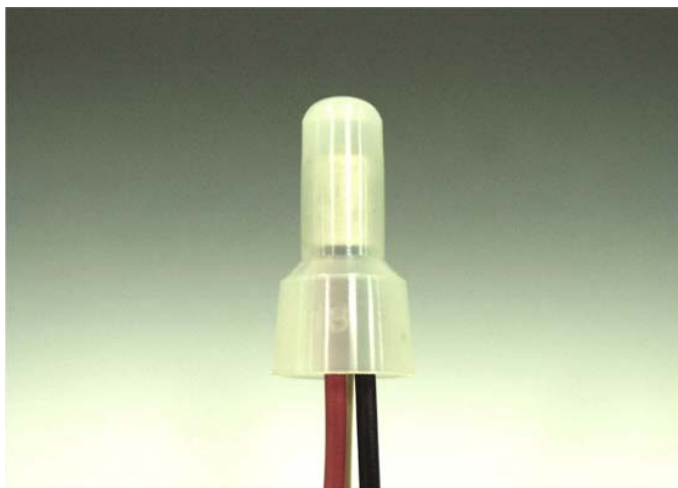


南京诺金电气有限公司

Nanjing Nowking Electric Co., Ltd

闭端端子样本



产品名称: 闭端端子

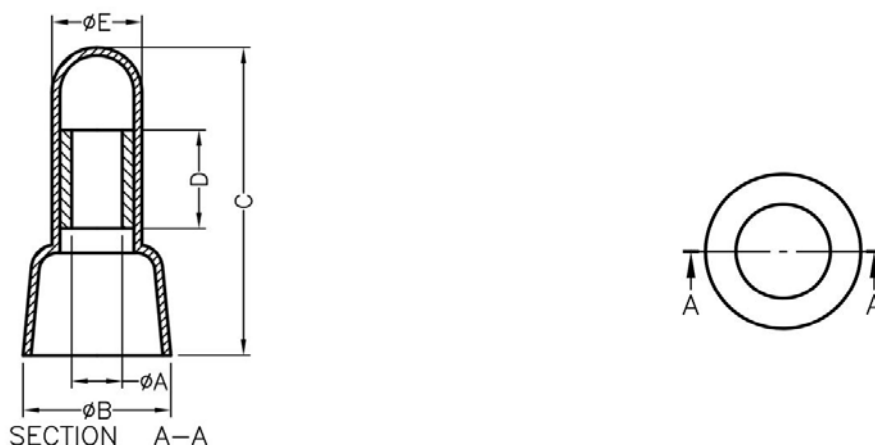
规格型号: BTTE01

- ◆ MATERIAL: NYLON 66(UL)
- ◆ FLAME CLASS: 94V-2
- ◆ COLOR: NATURAL
- ◆ UNIT: mm

用途: 电线剥去外皮插入端子内, 用工具

压着即可, 接触良好不脱落。

BTTE01 结构图

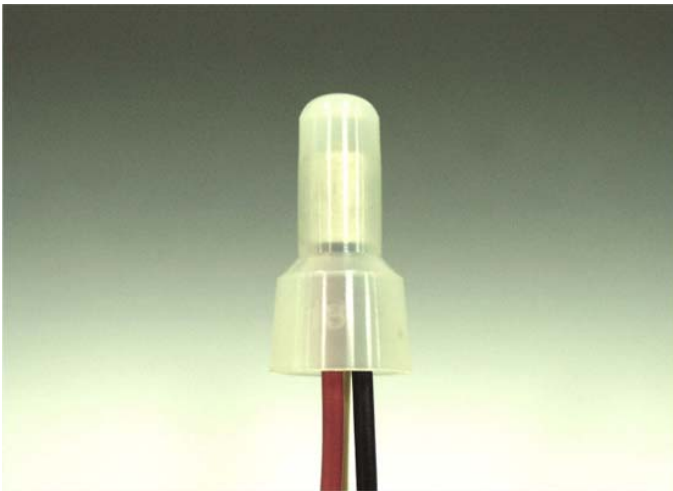


PART NO.	WIRE RANGE	
BTTE01	#22-18	1.25 mm ²
BTTE02	#22-14	2 mm ²
BTTE03	#22-10	5.5 mm ²
BTTE04	#8	8 mm ²

PART NO	A	B	C	D	E	PACKAGE
BTTE01	2.6	7.8	18.0	7.0	5.0	1000

南京诺金电气有限公司

Nanjing Nowking Electric Co., Ltd



产品名称：闭端端子

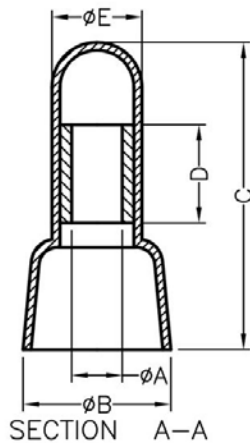
规格型号：BTTE02

- ◆ MATERIAL: NYLON 66(UL)
- ◆ FLAME CLASS: 94V-2
- ◆ COLOR: NATURAL
- ◆ UNIT: mm

用途：电线剥去外皮插入端子内，用工具

压着即可，接触良好不脱落。

BTTE02 结构图



PART NO.	WIRE RANGE	
BTTE01	#22-18	1.25 mm ²
BTTE02	#22-14	2 mm ²
BTTE03	#22-10	5.5 mm ²
BTTE04	#8	8 mm ²

PART NO	A	B	C	D	E	PACKAGE
BTTE02	3.1	9.5	20.0	7.0	5.7	1000

南京诺金电气有限公司

Nanjing Nowking Electric Co., Ltd



产品名称：闭端端子

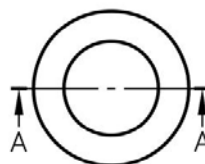
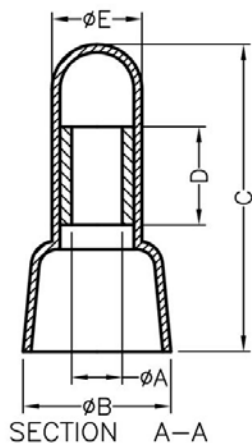
规格型号：BTTE03

- ◆ MATERIAL: NYLON 66(UL)
- ◆ FLAME CLASS: 94V-2
- ◆ COLOR: NATURAL
- ◆ UNIT: mm

用途：电线剥去外皮插入端子内，用工具

压着即可，接触良好不脱落。

BTTE03 结构图

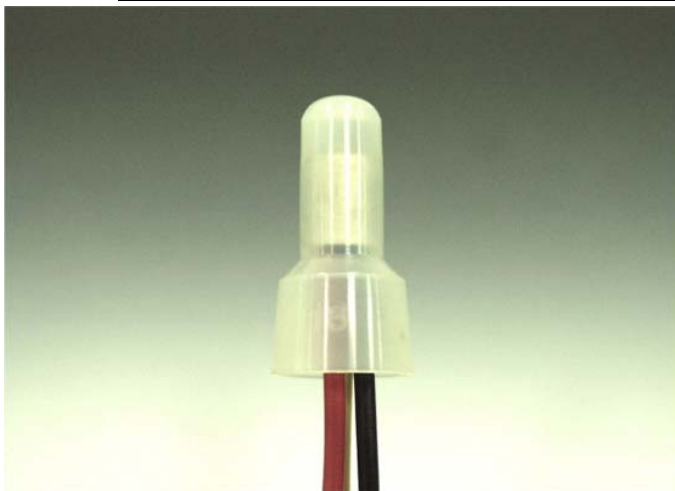


PART NO.	WIRE RANGE	
BTTE01	#22-18	1.25 mm ²
BTTE02	#22-14	2 mm ²
BTTE03	#22-10	5.5 mm ²
BTTE04	#8	8 mm ²

PART NO	A	B	C	D	E	PACKAGE
BTTE03	4.4	12.5	25.5	8.4	7.6	1000

南京诺金电气有限公司

Nanjing Nowking Electric Co., Ltd



产品名称：闭端端子

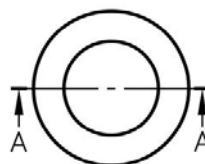
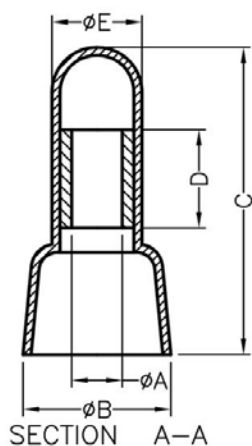
规格型号：BTTE04

- ◆ MATERIAL: NYLON 66(UL)
- ◆ FLAME CLASS: 94V-2
- ◆ COLOR: NATURAL
- ◆ UNIT: mm

用途：电线剥去外皮插入端子内，用工具

压着即可，接触良好不脱落。

BTTE04 结构图



PART NO.	WIRE RANGE	
BTTE01	#22-18	1.25 mm ²
BTTE02	#22-14	2 mm ²
BTTE03	#22-10	5.5 mm ²
BTTE04	#8	8 mm ²

PART NO	A	B	C	D	E	PACKAGE
BTTE04	5.2	14.2	27.7	8.5	9.5	1000

南京诺金电气有限公司

Nanjing Nowking Electric Co., Ltd



产品名称：闭端端子

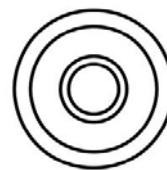
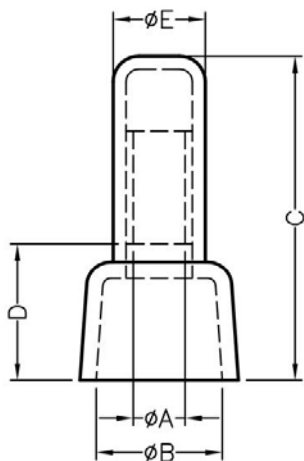
规格型号：BTTE05

- ◆ MATERIAL: NYLON 66(UL)
- ◆ FLAME CLASS: 94V-2
- ◆ COLOR: NATURAL
- ◆ UNIT: mm

用途：电线剥去外皮插入端子内，用工具

压着即可，接触良好不脱落。

BTTE05 结构图



PART NO.	WIRE RANGE	
BTTE05	#22-16	1.25 mm ²
BTTE06	#16-14	2 mm ²
BTTE07	#12-10	5.5 mm ²
BTTE08	#8	8 mm ²

PART NO	A	B	C	D	E	PACKAGE
BTTE05	2.5	7.9	19.2	7.2	5.1	1000

南京诺金电气有限公司

Nanjing Nowking Electric Co., Ltd



产品名称：闭端端子

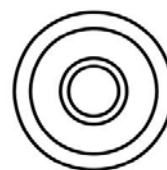
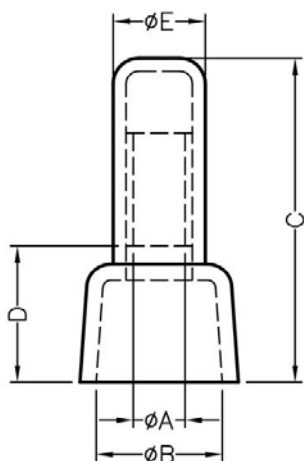
规格型号：BTTE06

- ◆ MATERIAL: NYLON 66(UL)
- ◆ FLAME CLASS: 94V-2
- ◆ COLOR: NATURAL
- ◆ UNIT: mm

用途：电线剥去外皮插入端子内，用工具

压着即可，接触良好不脱落。

BTTE06 结构图



PART NO.	WIRE RANGE	
BTTE05	#22-16	1.25 mm ²
BTTE06	#16-14	2 mm ²
BTTE07	#12-10	5.5 mm ²
BTTE08	#8	8 mm ²

PART NO	A	B	C	D	E	PACKAGE
BTTE06	3.2	8.2	20.7	8.5	5.7	1000

南京诺金电气有限公司

Nanjing Nowking Electric Co., Ltd



产品名称：闭端端子

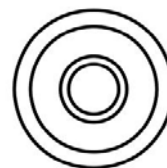
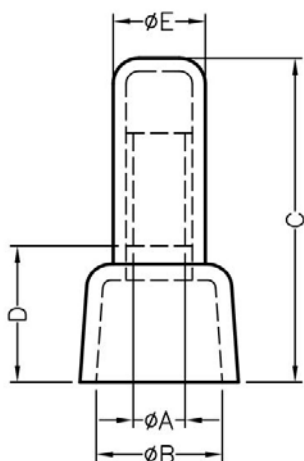
规格型号：BTTE07

- ◆ MATERIAL: NYLON 66(UL)
- ◆ FLAME CLASS: 94V-2
- ◆ COLOR: NATURAL
- ◆ UNIT: mm

用途：电线剥去外皮插入端子内，用工具

压着即可，接触良好不脱落。

BTTE07 结构图



PART NO.	WIRE RANGE	
BTTE05	#22-16	1.25 mm ²
BTTE06	#16-14	2 mm ²
BTTE07	#12-10	5.5 mm ²
BTTE08	#8	8 mm ²

PART NO	A	B	C	D	E	PACKAGE
BTTE07	4.2	10.6	248	10.7	7.3	1000

南京诺金电气有限公司

Nanjing Nowking Electric Co., Ltd



产品名称：闭端端子

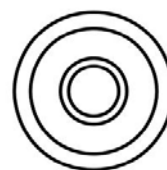
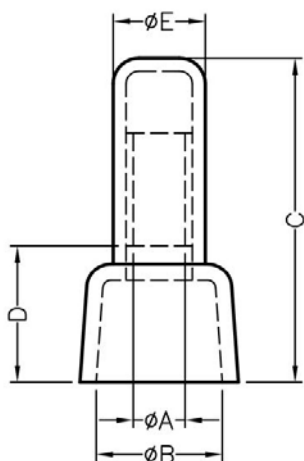
规格型号：BTTE08

- ◆ MATERIAL: NYLON 66(UL)
- ◆ FLAME CLASS: 94V-2
- ◆ COLOR: NATURAL
- ◆ UNIT: mm

用途：电线剥去外皮插入端子内，用工具

压着即可，接触良好不脱落。

BTTE08 结构图



PART NO.	WIRE RANGE	
BTTE05	#22-16	1.25 mm ²
BTTE06	#16-14	2 mm ²
BTTE07	#12-10	5.5 mm ²
BTTE08	#8	8 mm ²

PART NO	A	B	C	D	E	PACKAGE
BTTE08	5.0	12.2	27.1	12.5	9.2	500