

南京诺金电气有限公司

Nanjing Nowking Electric Co., Ltd

PC 板拉柄 | PCB 板拉柄

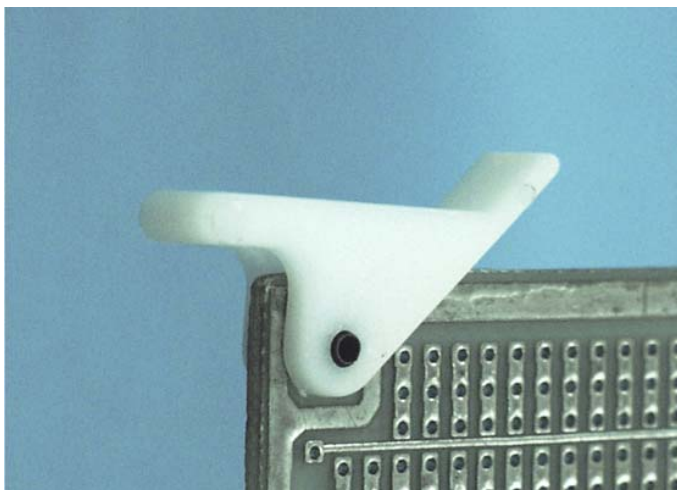
产品名称: PC 板拉柄 | PCB 板拉柄

规格型号: **PCL-01**

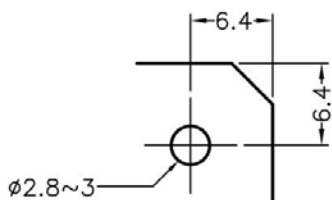
- ◆ MATERIAL 1: POM (UL)
- ◆ FLAME CLASS: 94HB
- ◆ COLOR: WHITE
- ◆ MATERIAL 2: STEEL
- ◆ UNIT: mm

用途: 与 PC/PCB 板导槽配合, 可快速将 PC/PCB 板拉出与压入。

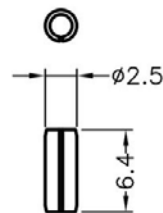
所有尺寸量测皆不含进胶口, 胶口凸出 0.3mm 之内. MATERIAL 1 为本体塑件 ; MATERIAL 2 包含金属材质部分



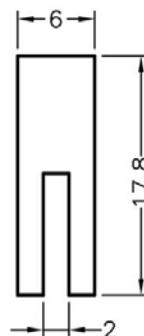
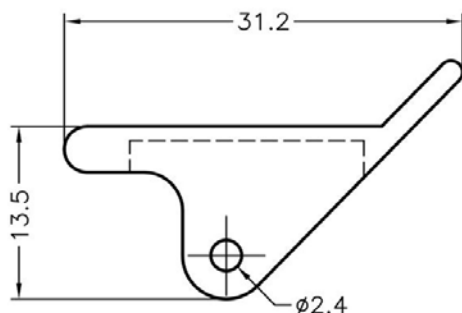
PCL-01 结构图



MOUNTING HOLE



PIN



PART NO	PACKAGE
PCL-01	1000

南京诺金电气有限公司

Nanjing Nowking Electric Co., Ltd

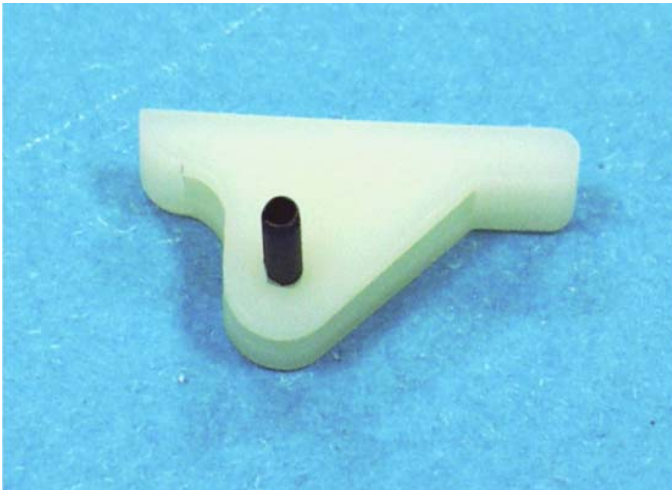
产品名称: PC板拉柄 | PCB板拉柄

规格型号: **PCL-02**

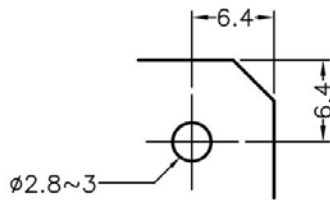
- ◆ MATERIAL 1: NYLON 66(UL)
- ◆ FLAME CLASS: 94V-0, 94V-2
- ◆ COLOR: BLACK, NATURAL
- ◆ MATERIAL 2: STEEL
- ◆ UNIT: mm

用途: 与 PC/PCB 板导槽配合, 可快速将 PC/PCB 板拉出与压入。

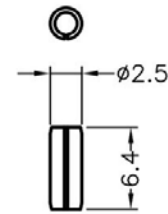
所有尺寸量测皆不含进胶口, 胶口凸出 0.3mm 之内. MATERIAL 1 为本体塑件 ; MATERIAL 2 包含金属材质部分



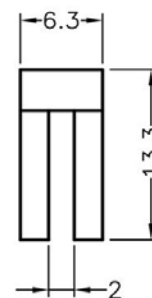
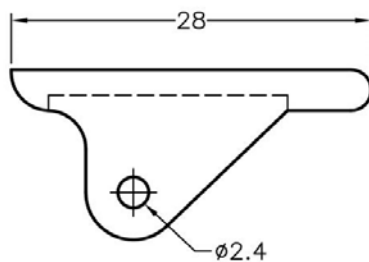
PCL-02 结构图



MOUNTING HOLE



PIN



PART NO	PACKAGE
PCL-02	1000

南京诺金电气有限公司

Nanjing Nowking Electric Co., Ltd

产品名称: PC板拉柄 | PCB板拉柄

规格型号: **PCL-03**

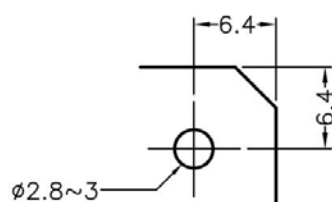


- ◆ MATERIAL 1: NYLON 66(UL)
- ◆ FLAME CLASS:94V-0, 94V-2
- ◆ COLOR: BLACK,NATURAL
- ◆ MATERIAL 2 : POM(UL)
- ◆ FLAME CLASS:94VHB
- ◆ COLOR: NATURAL
- ◆ MATERIAL 3 :STEEL
- ◆ UNIT: mm

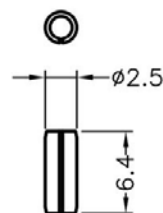
用途: 与 PC/PCB 板导槽配合, 可快速将 PC/PCB 板拉出与压入。

所有尺寸量测皆不含进胶口,胶口凸出 **0.3mm** 之内.MATERIAL 1 及 MATERIAL 2 其一为本体塑件 ;MATERIAL 3 包含金属材质部分

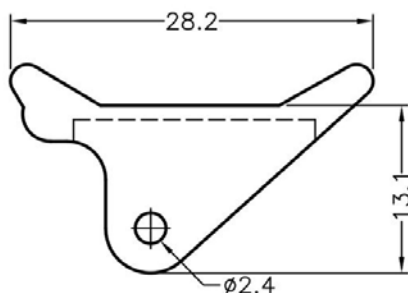
PCL-03 结构图



MOUNTING HOLE



PIN



PART NO	PACKAGE
PCL-03	1000

南京诺金电气有限公司

Nanjing Nowking Electric Co., Ltd

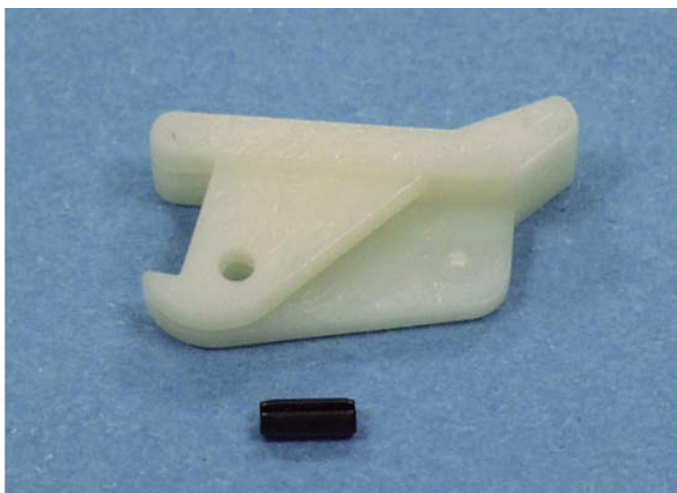
产品名称: PC板拉柄 | PCB板拉柄

规格型号: **PCL-04**

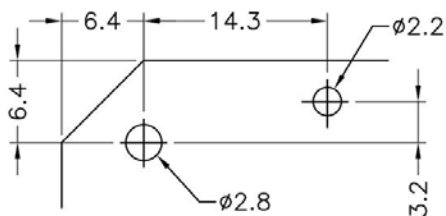
- ◆ MATERIAL 1: NYLON 66(UL)
- ◆ FLAME CLASS: 94V-0, 94V-2
- ◆ COLOR: BLACK, NATURAL
- ◆ MATERIAL 2: STEEL
- ◆ UNIT: mm

用途: 与 PC/PCB 板导槽配合, 可快速将 PC/PCB 板拉出与压入。

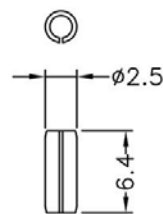
所有尺寸量测皆不含进胶口, 胶口凸出 0.3mm 之内. MATERIAL 1 为本体塑件 ; MATERIAL 2 包含金属材质部分



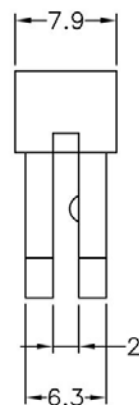
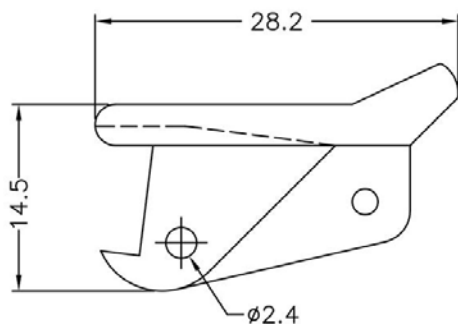
PCL-04 结构图



MOUNTING HOLE



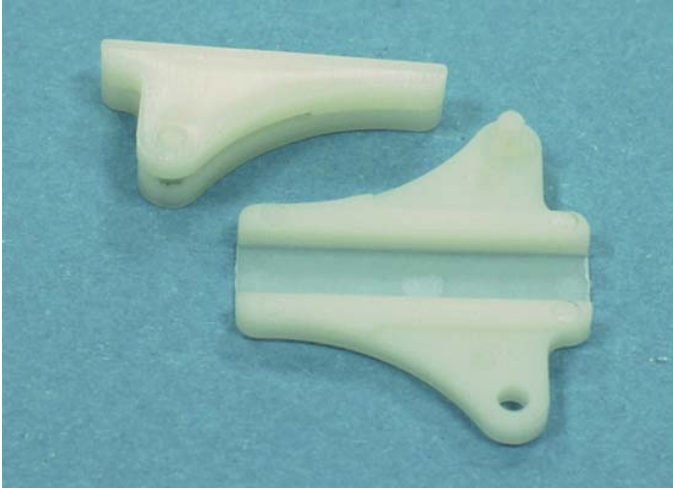
PIN



PART NO	PACKAGE
PCL-04	1000

南京诺金电气有限公司

Nanjing Nowking Electric Co., Ltd



产品名称: PC板拉柄 | PCB板拉柄

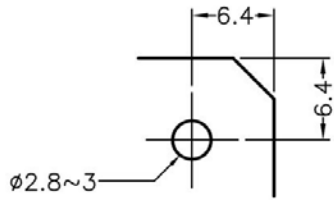
规格型号: **PCL-05**

- ◆ MATERIAL : NYLON 66(UL)
- ◆ FLAME CLASS:94V-0, 94V-2
- ◆ COLOR: BLACK,NATURAL
- ◆ UNIT: mm

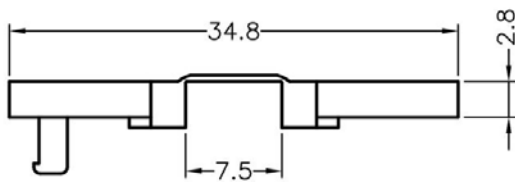
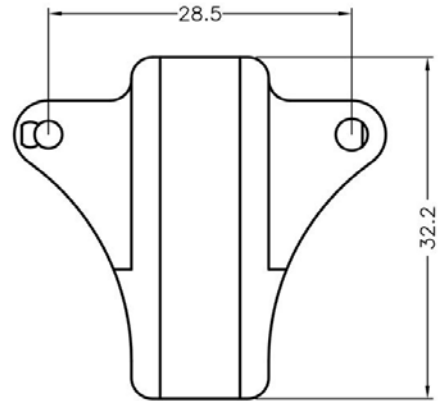
用途: 与 PC/PCB 板导槽配合, 可快速将 PC/PCB 板拉出与压入。

所有尺寸量测皆不含进胶口,胶口凸出 **0.3mm** 之内。

PCL-05 结构图



MOUNTING HOLE



PART NO	PACKAGE
PCL-05	500

南京诺金电气有限公司

Nanjing Nowking Electric Co., Ltd

产品名称: PC板拉柄 | PCB板拉柄

规格型号: **PCL-06**

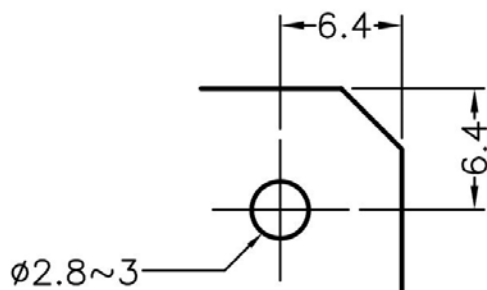
- ◆ MATERIAL 1 : NYLON 66(UL)
- ◆ FLAME CLASS:94V-0, 94V-2
- ◆ COLOR: BLACK,NATURAL
- ◆ MATERIAL 2 : STEEL
- ◆ UNIT: mm

用途: 与 PC/PCB 板导槽配合, 可快速将 PC/PCB 板拉出与压入。

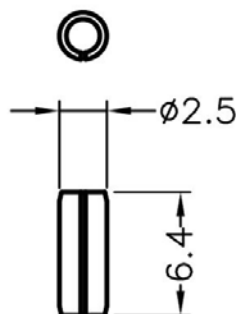
所有尺寸量测皆不含进胶口,胶口凸出 0.3mm 之内.MATERIAL 1 为本体塑件 ;MATERIAL 2 包含金属材质部分



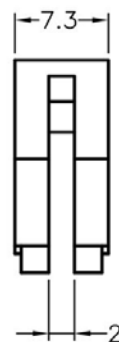
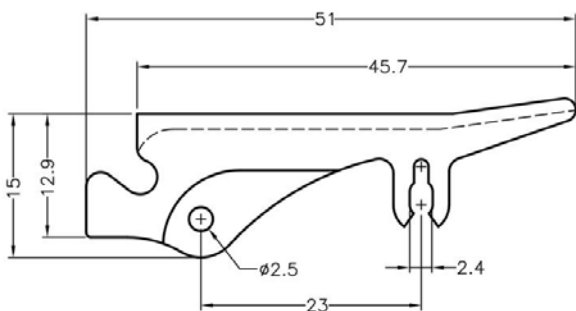
LPCL-06 结构图



MOUNTING HOLE



PIN



PART NO	PACKAGE
PCL-06	250

南京诺金电气有限公司

Nanjing Nowking Electric Co., Ltd

产品名称: PC板拉柄 | PCB板拉柄

规格型号: **PCL-07**

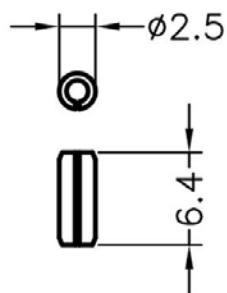
- ◆ MATERIAL 1 : NYLON 66(UL)
- ◆ FLAME CLASS:94V-0, 94V-2
- ◆ COLOR: BLACK,NATURAL
- ◆ MATERIAL 2 : STEEL
- ◆ UNIT: mm

用途: 与 PC/PCB 板导槽配合, 可快速将 PC/PCB 板拉出与压入。

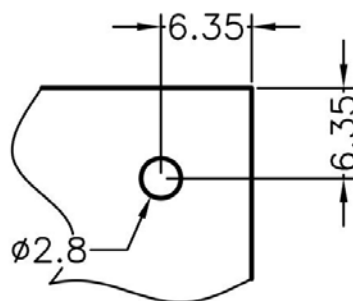
内缩为正常现象; 所有尺寸量测皆不含进胶口,胶口凸出 0.3mm 之内.MATERIAL 1 为本体塑件 ;MATERIAL 2 包含金属材质部分



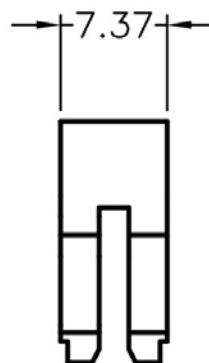
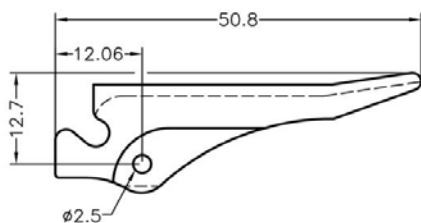
PCL-07 结构图



PIN



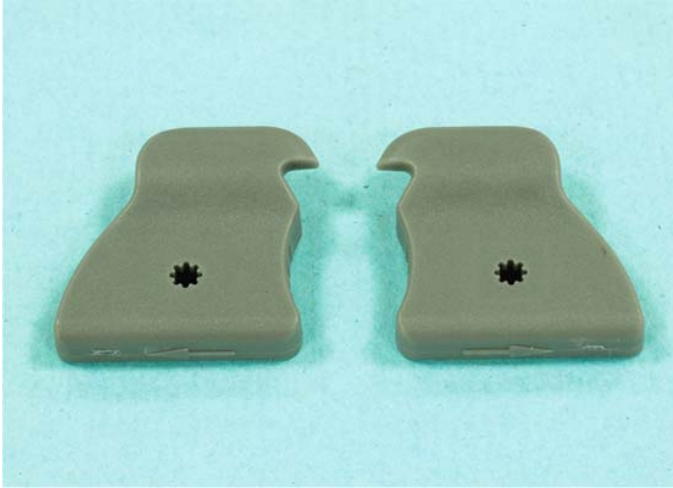
MOUNTING HOLE



PART NO	PACKAGE
PCL-07	1000

南京诺金电气有限公司

Nanjing Nowking Electric Co., Ltd



产品名称: PC板拉柄 | PCB板拉柄

规格型号: **PCL-08**

◆ MATERIAL : PC+ABS(UL)

◆ FLAME CLASS:94V-0

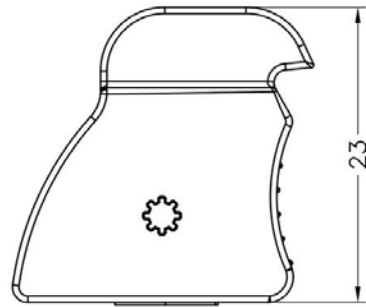
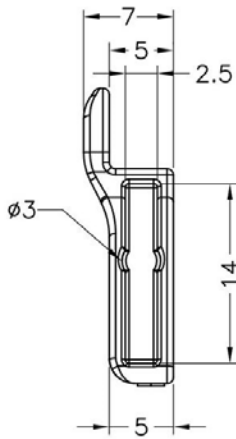
◆ COLOR: ORANGE,GRAY

◆ UNIT: mm

用途: 与PC/PCB板导槽配合,可快速将PC/PCB板拉出与压入。

可使用同等材质

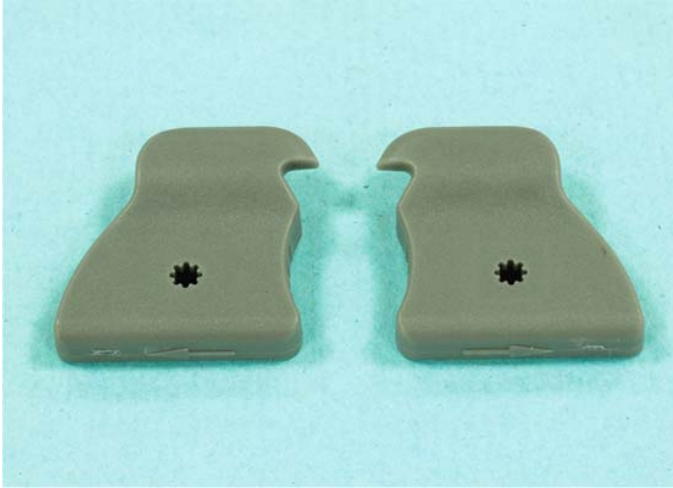
PCL-08 结构图



	PART NO	PACKAGE
	PCL-08	1000

南京诺金电气有限公司

Nanjing Nowking Electric Co., Ltd



产品名称: PC板拉柄|PCB板拉柄

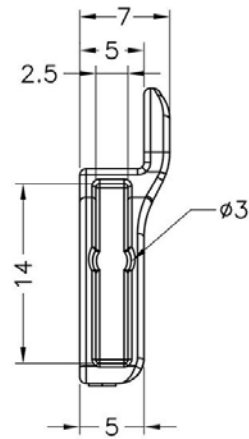
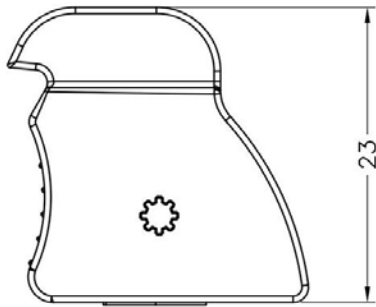
规格型号: **PCL-09**

- ◆ MATERIAL : PC+ABS(UL)
- ◆ FLAME CLASS:94V-0
- ◆ COLOR: ORANGE,GRAY
- ◆ UNIT: mm

用途: 与PC/PCB板导槽配合,可快速将PC/PCB板拉出与压入。

可使用同等材质

PCL-09 结构图



	PART NO	PACKAGE
	PCL-09	1000

南京诺金电气有限公司

Nanjing Nowking Electric Co., Ltd

产品名称: PC板拉柄 | PCB板拉柄

规格型号: **PCL-10**

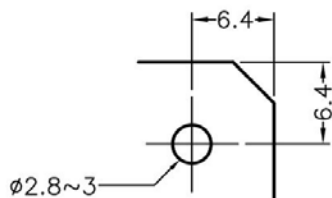
- ◆ MATERIAL 1 : NYLON 66(UL)
- ◆ FLAME CLASS:94V-0, 94V-2
- ◆ COLOR: BLACK,NATURAL
- ◆ MATERIAL 2 : STEEL
- ◆ UNIT: mm

用途: 与 PC/PCB 板导槽配合, 可快速将 PC/PCB 板拉出与压入。

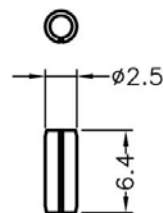
所有尺寸量测皆不含进胶口,胶口凸出 0.3mm 之内.MATERIAL 1 为本体塑件 ;MATERIAL 2 包含金属材质部分



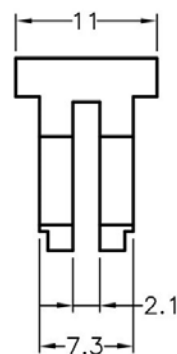
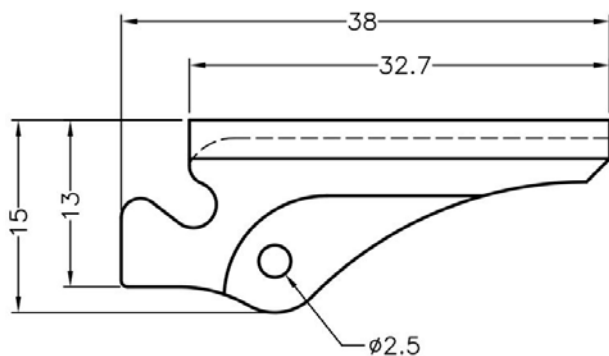
PCL-10 结构图



MOUNTING HOLE



PIN



PART NO	PACKAGE
PCL-10	500

南京诺金电气有限公司

Nanjing Nowking Electric Co., Ltd

产品名称: PC板拉柄 | PCB板拉柄

规格型号: **PCL-11**

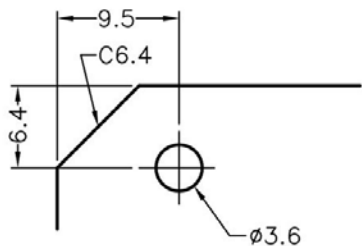
- ◆ MATERIAL 1 : NYLON 66(UL)
- ◆ FLAME CLASS:94V-0, 94V-2
- ◆ COLOR 1: BLACK,NATURAL
- ◆ MATERIAL 2 : STEEL
- ◆ COLOR 2: BLACK,NATURAL
- ◆ UNIT: mm

用途: 与 PC/PCB 板导槽配合, 可快速将 PC/PCB 板拉出与压入。

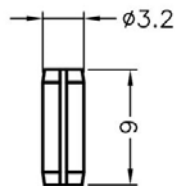
所有尺寸量测皆不含进胶口,胶口凸出 **0.3mm** 之内.**MATERIAL 1** 及 **MATERIAL 2** 本体塑件 ;**MATERIAL 3** 包含金属材质部分



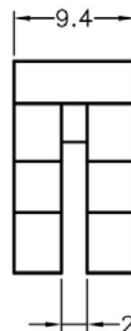
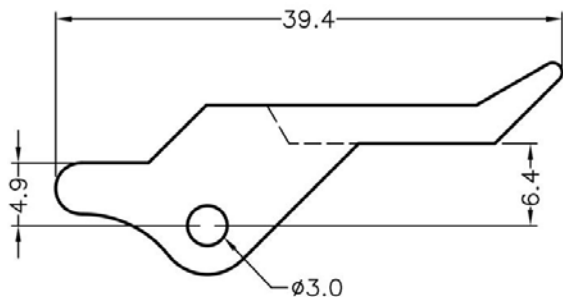
PCL-11 结构图



MOUNTING HOLE



PIN



PART NO	PACKAGE
PCL-11	500

南京诺金电气有限公司

Nanjing Nowking Electric Co., Ltd

产品名称: PC板拉柄 | PCB板拉柄

规格型号: **PCL-12**

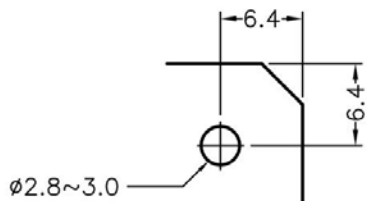
- ◆ MATERIAL 1 : NYLON 66(UL)
- ◆ FLAME CLASS:94V-0, 94V-2
- ◆ COLOR: BLACK,NATURAL
- ◆ MATERIAL 2 : STEEL
- ◆ UNIT: mm

用途: 与 PC/PCB 板导槽配合, 可快速将 PC/PCB 板拉出与压入。

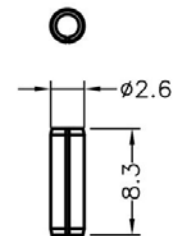
所有尺寸量测皆不含进胶口,胶口凸出 0.3mm 之内.MATERIAL 1 为本体塑件 ;MATERIAL 2 包含金属材质部分



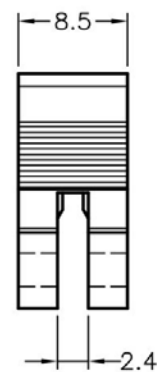
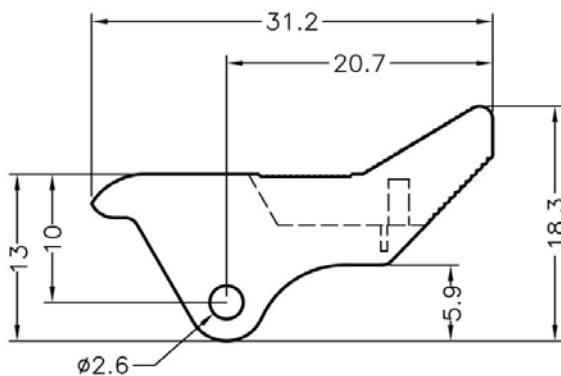
PCL-12 结构图



MOUNTING HOLE



PIN



PART NO	PACKAGE
PCL-12	1000

南京诺金电气有限公司

Nanjing Nowking Electric Co., Ltd



产品名称: PC板拉柄 | PCB板拉柄

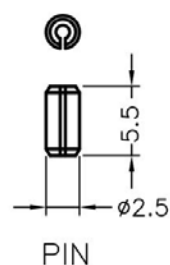
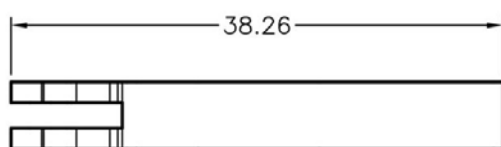
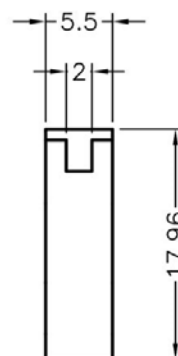
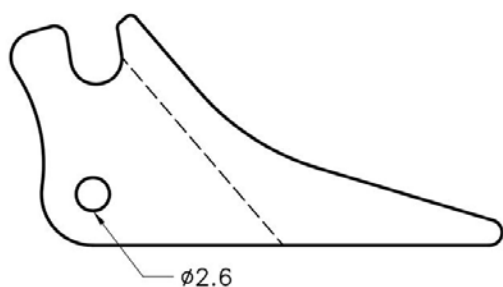
规格型号: **PCL-13**

- ◆ MATERIAL 1 : POM(UL)
- ◆ FLAME CLASS:94HB
- ◆ COLOR: BLACK
- ◆ MATERIAL 2 : STEEL
- ◆ UNIT: mm

用途: 与 PC/PCB 板导槽配合, 可快速将 PC/PCB 板拉出与压入。

所有尺寸量测皆不含进胶口,胶口凸出 0.3mm 之内.MATERIAL 1 为本体塑件 ;MATERIAL 2 包含金属材质部分

PCL-13 结构图



PART NO	PACKAGE
PCL-13	1000

南京诺金电气有限公司

Nanjing Nowking Electric Co., Ltd

产品名称: PC板拉柄 | PCB板拉柄

规格型号: **PCL-14**

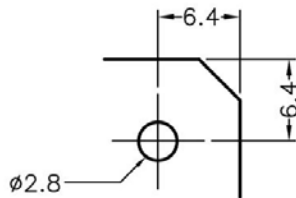
- ◆ MATERIAL 1 : NYLON 66(UL)
- ◆ FLAME CLASS: 94V-0, 94V-2
- ◆ COLOR: BLACK, NATURAL
- ◆ MATERIAL 2 : STEEL
- ◆ UNIT: mm

用途: 与 PC/PCB 板导槽配合, 可快速将 PC/PCB 板拉出与压入。

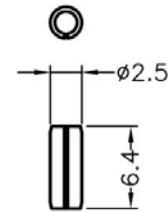
所有尺寸量测皆不含进胶口, 胶口凸出 0.3mm 之内. MATERIAL 1 为本体塑件 ; MATERIAL 2 包含金属材质部分



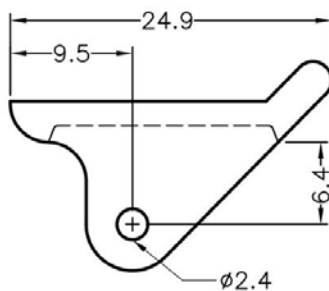
PCL-14 结构图



MOUNTING HOLE



PIN



CARD THICKNESS : 1.6mm

PART NO	PACKAGE
PCL-14	1000

南京诺金电气有限公司

Nanjing Nowking Electric Co., Ltd

产品名称: PC板拉柄 | PCB板拉柄

规格型号: **PCL-15**

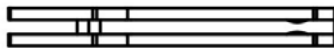
- ◆ MATERIAL 1 : NYLON 66(UL)
- ◆ FLAME CLASS:94V-0, 94V-2
- ◆ COLOR: BLACK,NATURAL
- ◆ MATERIAL 2 : STEEL
- ◆ UNIT: mm

用途: 与 PC/PCB 板导槽配合, 可快速将 PC/PCB 板拉出与压入。

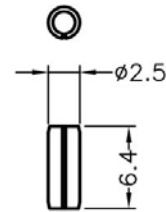
所有尺寸量测皆不含进胶口,胶口凸出 0.3mm 之内.MATERIAL 1 为本体塑件 ;MATERIAL 2 包含金属材质部分



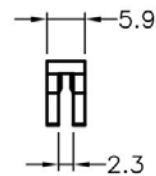
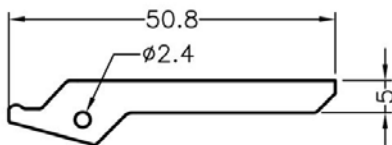
PCL-15 结构图



THICKNESS : 1.5mm



PIN



PART NO	PACKAGE
PCL-15	1000

南京诺金电气有限公司

Nanjing Nowking Electric Co., Ltd

产品名称: PC板拉柄 | PCB板拉柄

规格型号: **PCL-16**

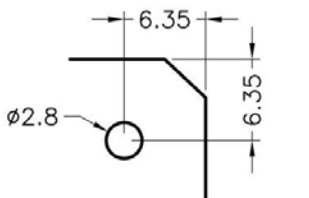
- ◆ MATERIAL 1 : NYLON 66(UL)
- ◆ FLAME CLASS:94V-0, 94V-2
- ◆ COLOR: BLACK,NATURAL
- ◆ MATERIAL 2 : STEEL
- ◆ UNIT: mm

用途: 与 PC/PCB 板导槽配合, 可快速将 PC/PCB 板拉出与压入。

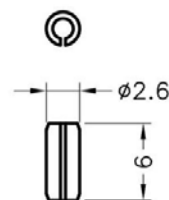
所有尺寸量测皆不含进胶口,胶口凸出 0.3mm 之内.MATERIAL 1 为本体塑件 ;MATERIAL 2 包含金属材质部分



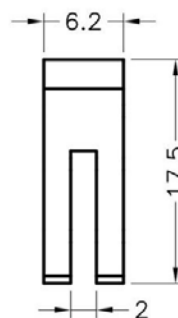
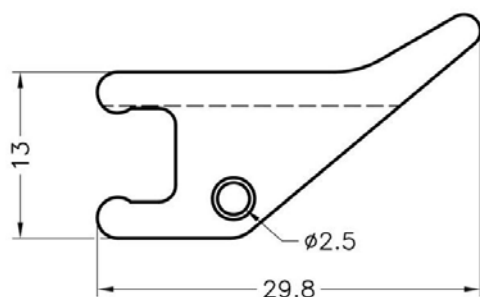
PCL-16 构图



MOUNTING HOLE
THICKNESS:1.6mm



PIN



PART NO	PACKAGE
PCL-16	1000