

南京诺金电气有限公司

Nanjing Nowking Electric Co., Ltd

PC 板导槽|PCB 板导槽



产品名称: PC 板导槽|PCB 板导槽

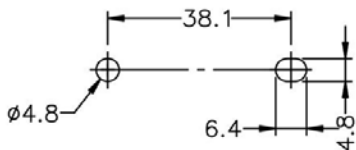
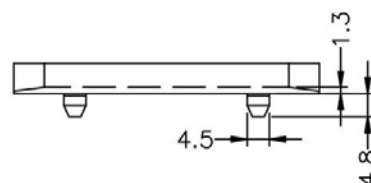
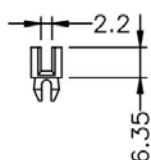
PART NO: PCCG001

- ◆ MATERIAL: NYLON 66(UL)
- ◆ FLAME CLASS: 94V-0,94V-2
- ◆ COLOR: BLACK, NATURAL, WHITE
- ◆ UNIT: mm

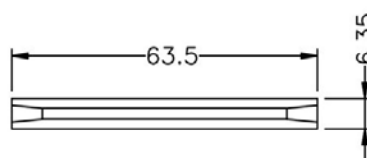
用途: 固定 PC 板|PCB 板于机壳上, 安装方便, 免螺丝。

所有尺寸量测皆不含进胶口, 胶口凸出 0.3mm 之内

PCCG001 结构图



MOUNTING HOLES



	PART NO	PACKAGE
	PCCG001	500

南京诺金电气有限公司

Nanjing Nowking Electric Co., Ltd



产品名称: PC 板导槽|PCB 板导槽

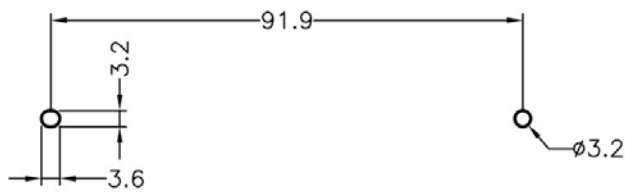
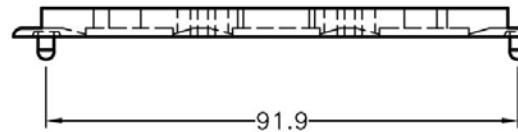
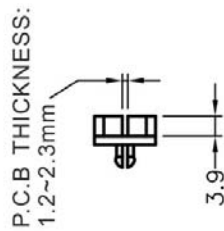
PART NO: PCCG002

- ◆ MATERIAL: NYLON 66(UL)
- ◆ FLAME CLASS: 94V-0, 94V-2
- ◆ COLOR: BLACK, NATURAL
- ◆ UNIT: mm

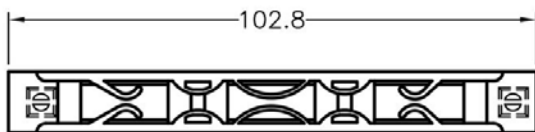
用途: 固定 PC 板|PCB 板于机壳上, 安装方便, 无方向性, 免螺丝。

所有尺寸量测皆不含进胶口, 胶口凸出 0.3mm 之内

PCCG002 结构图



MOUNTING HOLES
CHASSIS THICKNESS: 1.6~2.2



	PART NO	PACKAGE
	PCCG002	250



产品名称: PC 板导槽|PCB 板导槽

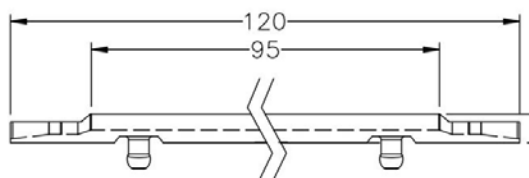
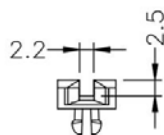
PART NO: PCCG003

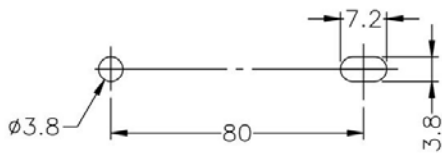
- ◆ MATERIAL: NYLON 66(UL)
- ◆ FLAME CLASS: 94V-0, 94V-2
- ◆ COLOR: BLACK, NATURAL
- ◆ UNIT: mm

用途: 固定 PC 板|PCB 板于机壳上, 安装方便, 免螺丝。

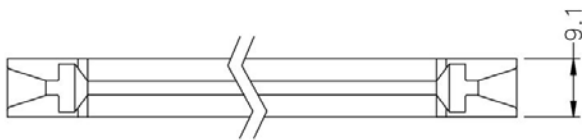
所有尺寸量测皆不含进胶口, 胶口凸出 0.3mm 之内

PCCG003 结构图





MOUNTING HOLES
CHASSIS THICKNESS 1.6



	PART NO	PACKAGE
	PCCG003	100



PCCG004 结构图

产品名称: PC 板导槽|PCB 板导槽

PART NO: PCCG004

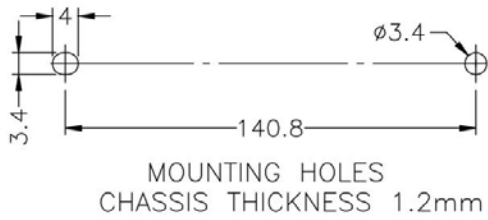
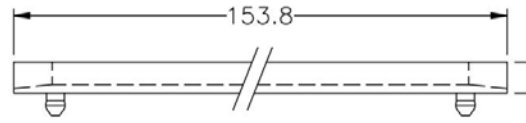
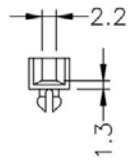
- ◆ MATERIAL: NYLON 66(UL)
- ◆ FLAME CLASS: 94V-0, 94V-2
- ◆ COLOR: BLACK, NATURAL
- ◆ UNIT: mm

用途: 固定 PC 板|PCB 板于机壳上, 安装方便, 免螺丝。

所有尺寸量测皆不含进胶口, 胶口凸出 0.3mm 之内

南京诺金电气有限公司

Nanjing Nowking Electric Co., Ltd



	PART NO	PACKAGE
	PCCG004	100

南京诺金电气有限公司

Nanjing Nowking Electric Co., Ltd



产品名称: PC 板导槽|PCB 板导槽

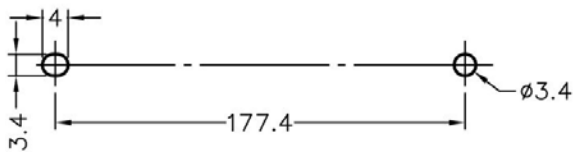
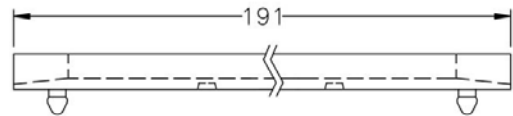
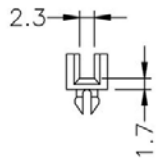
PART NO: PCCG005

- ◆ MATERIAL: NYLON 66(UL)
- ◆ FLAME CLASS: 94V-0, 94V-2
- ◆ COLOR: BLACK, NATURAL
- ◆ UNIT: mm

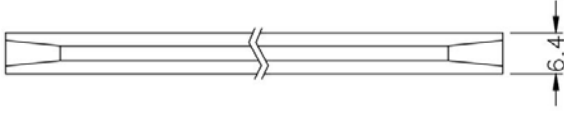
用途: 固定 PC 板|PCB 板于机壳上, 安装方便, 免螺丝。

所有尺寸量测皆不含进胶口, 胶口凸出 0.3mm 之内

PCCG005 结构图



MOUNTING HOLES
CHASSIS THICKNESS 1.2



	PART NO	PACKAGE
	PCCG005	100



产品名称: PC 板导槽|PCB 板导槽

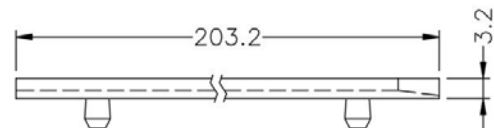
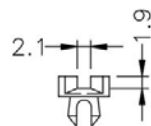
PART NO: PCCG006

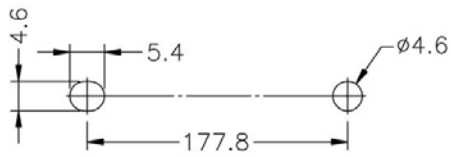
- ◆ MATERIAL: NYLON 66(UL)
- ◆ FLAME CLASS: 94V-0,94V-2
- ◆ COLOR: BLACK,NATURAL
- ◆ UNIT:mm

用途: 固定 PC 板|PCB 板于机壳上, 安装方便, 免螺丝。

所有尺寸量测皆不含进胶口, 胶口凸出 0.3mm 之内

PCCG006 结构图





MOUNTING HOLES
CHASSIS THICKNESS 1.2



	PART NO	PACKAGE
	PCCG006	100



PCCG007 结构图

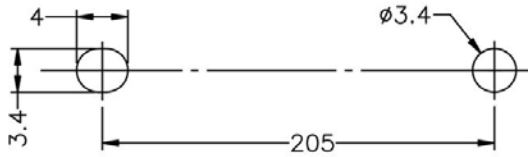
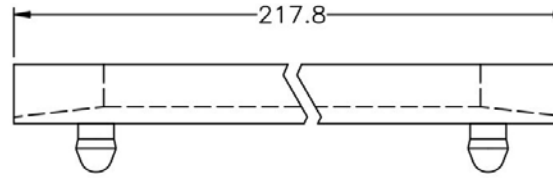
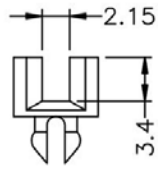
产品名称: PC 板导槽|PCB 板导槽

PART NO: PCCG007

- ◆ MATERIAL: NYLON 66(UL)
- ◆ FLAME CLASS: 94V-0, 94V-2
- ◆ COLOR: BLACK, NATURAL
- ◆ UNIT: mm

用途: 固定 PC 板|PCB 板于机壳上, 安装方便, 免螺丝。

所有尺寸量测皆不含进胶口, 胶口凸出 0.3mm 之内



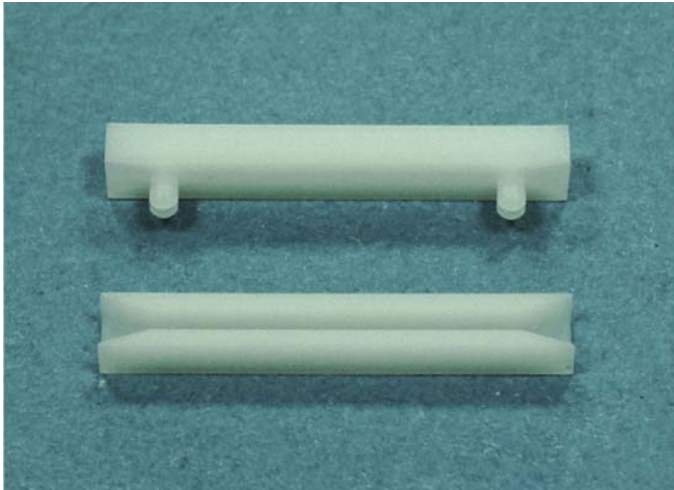
MOUNTING HOLES
CHASSIS THICKNESS 1.2



	PART NO	PACKAGE
	PCCG007	100

南京诺金电气有限公司

Nanjing Nowking Electric Co., Ltd



产品名称: PC 板导槽|PCB 板导槽

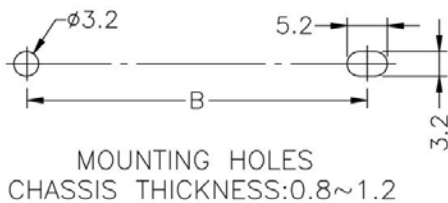
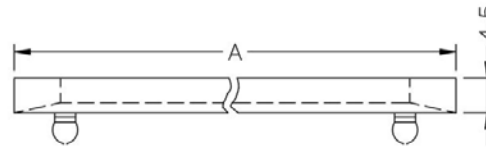
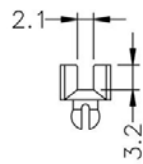
PART NO: PCCG008

- ◆ MATERIAL: NYLON 66(UL)
- ◆ FLAME CLASS: 94V-0, 94V-2
- ◆ COLOR: BLACK, NATURAL
- ◆ UNIT: mm

用途: 固定 PC 板|PCB 板于机壳上, 安装方便, 免螺丝。

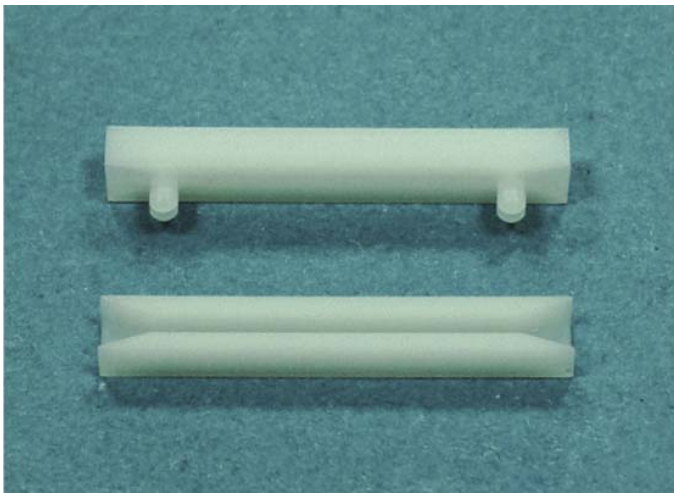
所有尺寸量测皆不含进胶口, 胶口凸出 0.3mm 之内

PCCG008 结构图





	PART NO	A	B	PACKAGE
	PCCG008	63.5	50.8	500



产品名称: PC 板导槽|PCB 板导槽

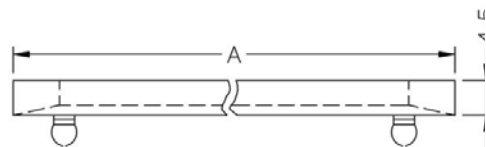
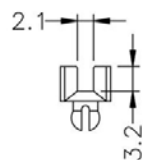
PART NO: PCCG009

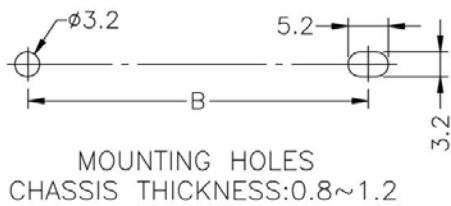
- ◆ MATERIAL: NYLON 66(UL)
- ◆ FLAME CLASS: 94V-0,94V-2
- ◆ COLOR: BLACK,NATURAL
- ◆ UNIT:mm

用途: 固定 PC 板|PCB 板于机壳上, 安装方便, 免螺丝。

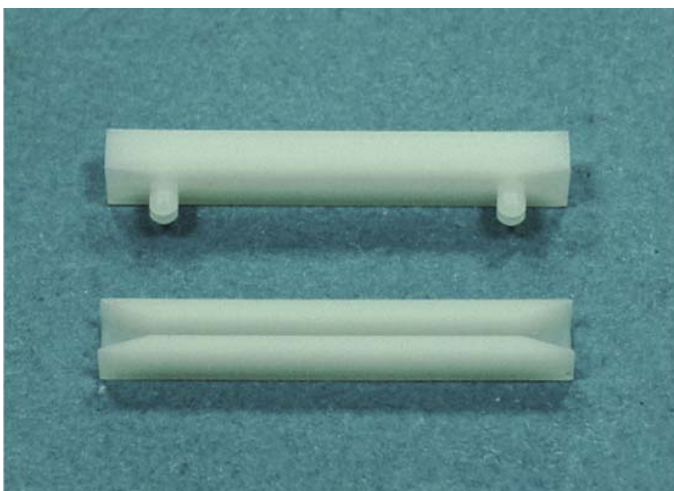
所有尺寸量测皆不含进胶口, 胶口凸出 0.3mm 之内

PCCG009 结构图





	PART NO	A	B	PACKAGE
	PCCG009	76.2	63.5	500



PCCG010 结构图

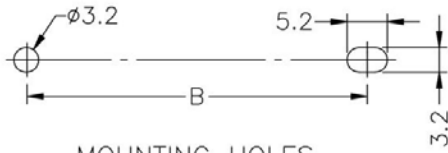
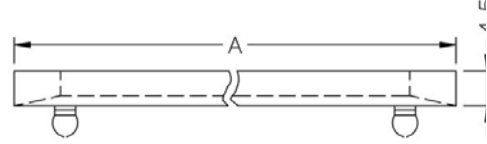
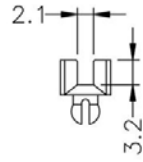
产品名称: PC 板导槽|PCB 板导槽

PART NO: PCCG010

- ◆ MATERIAL: NYLON 66(UL)
- ◆ FLAME CLASS: 94V-0,94V-2
- ◆ COLOR: BLACK, NATURAL
- ◆ UNIT: mm

用途: 固定 PC 板|PCB 板于机壳上, 安装方便, 免螺丝。

所有尺寸量测皆不含进胶口, 胶口凸出 0.3mm 之内



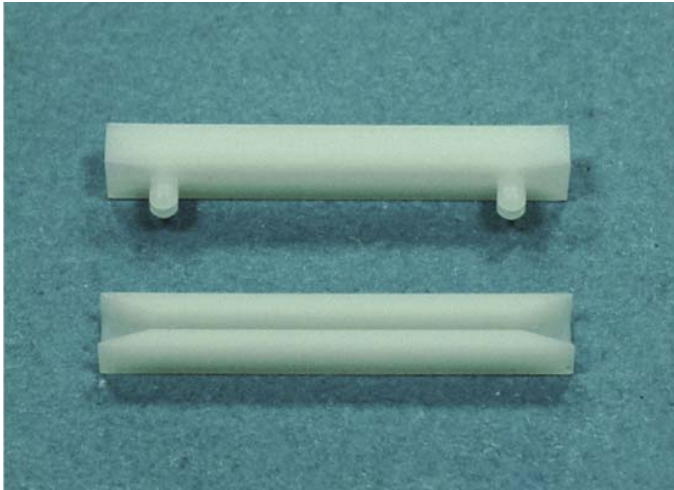
MOUNTING HOLES
CHASSIS THICKNESS:0.8~1.2



	PART NO	A	B	PACKAGE
	PCCG010	88.9	76.2	250

南京诺金电气有限公司

Nanjing Nowking Electric Co., Ltd



产品名称: PC 板导槽|PCB 板导槽

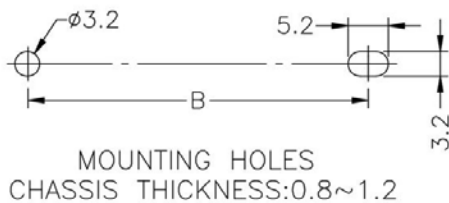
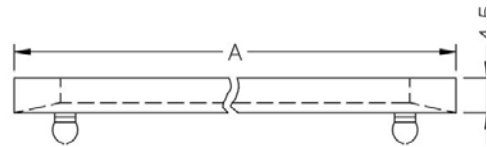
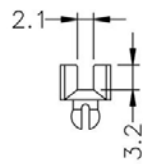
PART NO: PCCG011

- ◆ MATERIAL: NYLON 66(UL)
- ◆ FLAME CLASS: 94V-0, 94V-2
- ◆ COLOR: BLACK, NATURAL
- ◆ UNIT: mm

用途: 固定 PC 板|PCB 板于机壳上, 安装方便, 免螺丝。

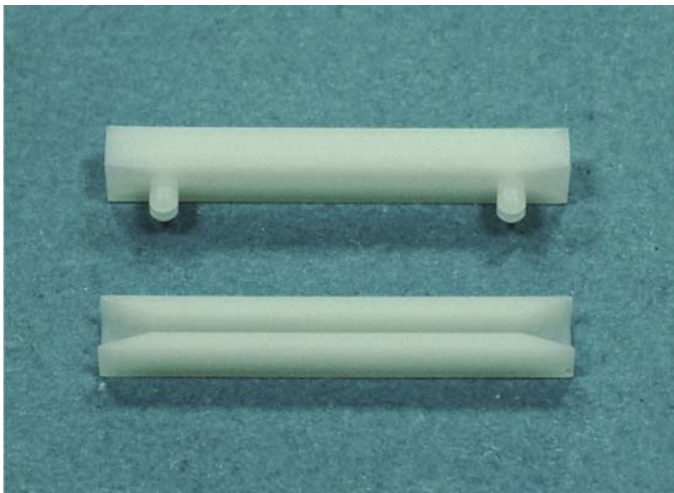
所有尺寸量测皆不含进胶口, 胶口凸出 0.3mm 之内

PCCG011 结构图





	PART NO	A	B	PACKAGE
	PCCG011	101.6	88.9	250



PCCG012 结构图

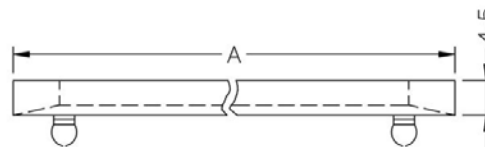
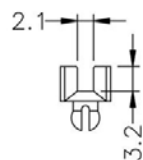
产品名称: PC 板导槽|PCB 板导槽

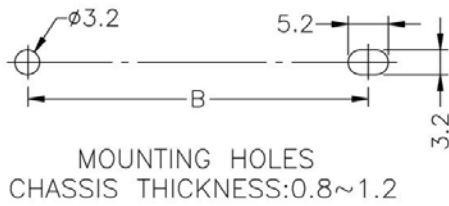
PART NO: PCCG012

- ◆ MATERIAL: NYLON 66(UL)
- ◆ FLAME CLASS: 94V-0,94V-2
- ◆ COLOR: BLACK,NATURAL
- ◆ UNIT:mm

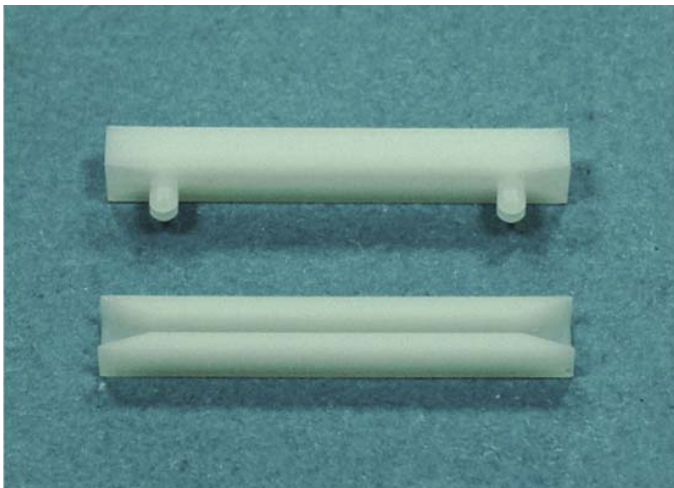
用途: 固定 PC 板|PCB 板于机壳上, 安装方便, 免螺丝。

所有尺寸量测皆不含进胶口, 胶口凸出 0.3mm 之内





	PART NO	A	B	PACKAGE
	PCCG012	114.3	101.6	200



PCCG013 结构图

产品名称: PC 板导槽|PCB 板导槽

PART NO: PCCG013

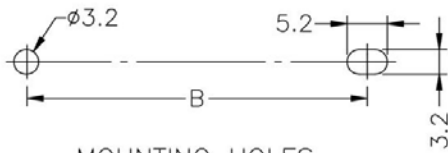
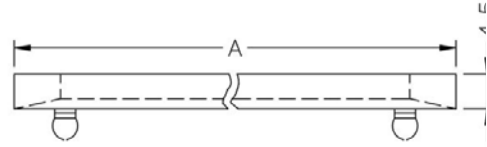
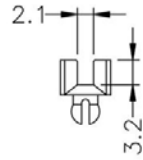
- ◆ MATERIAL: NYLON 66(UL)
- ◆ FLAME CLASS: 94V-0,94V-2
- ◆ COLOR: BLACK, NATURAL
- ◆ UNIT: mm

用途: 固定 PC 板|PCB 板于机壳上, 安装方便, 免螺丝。

所有尺寸量测皆不含进胶口, 胶口凸出 0.3mm 之内

南京诺金电气有限公司

Nanjing Nowking Electric Co., Ltd



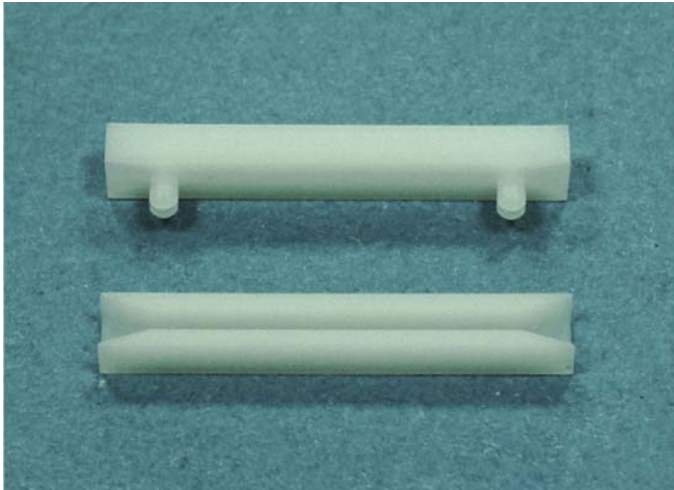
MOUNTING HOLES
CHASSIS THICKNESS:0.8~1.2



	PART NO	A	B	PACKAGE
	PCCG013	127.0	114.3	200

南京诺金电气有限公司

Nanjing Nowking Electric Co., Ltd



产品名称: PC 板导槽|PCB 板导槽

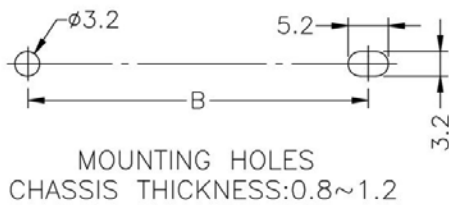
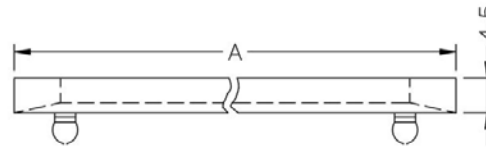
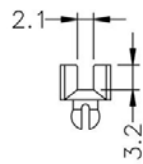
PART NO: PCCG014

- ◆ MATERIAL: NYLON 66(UL)
- ◆ FLAME CLASS: 94V-0, 94V-2
- ◆ COLOR: BLACK, NATURAL
- ◆ UNIT: mm

用途: 固定 PC 板|PCB 板于机壳上, 安装方便, 免螺丝。

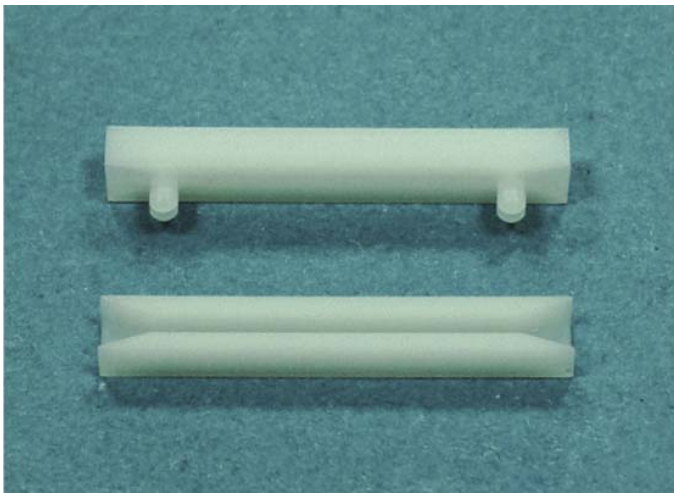
所有尺寸量测皆不含进胶口, 胶口凸出 0.3mm 之内

PCCG014 结构图





	PART NO	A	B	PACKAGE
	PCCG014	139.7	127.0	200



产品名称: PC 板导槽|PCB 板导槽

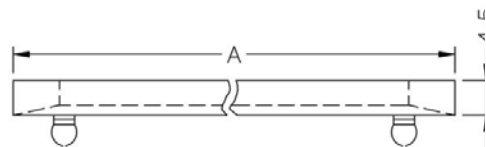
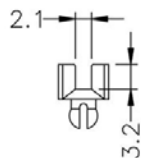
PART NO: PCCG015

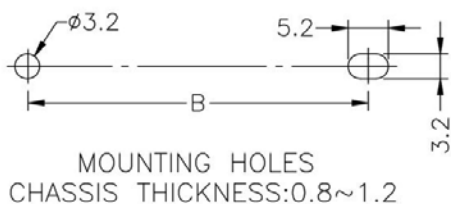
- ◆ MATERIAL: NYLON 66(UL)
- ◆ FLAME CLASS: 94V-0,94V-2
- ◆ COLOR: BLACK,NATURAL
- ◆ UNIT:mm

用途: 固定 PC 板|PCB 板于机壳上, 安装方便, 免螺丝。

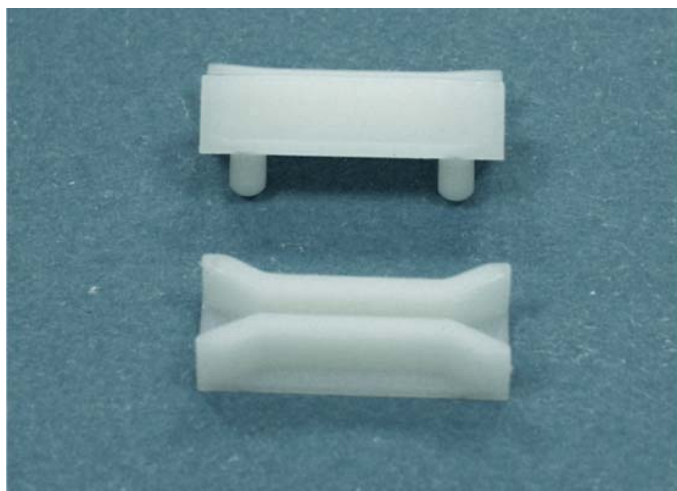
所有尺寸量测皆不含进胶口, 胶口凸出 0.3mm 之内

PCCG015 结构图





	PART NO	A	B	PACKAGE
	PCCG015	152.4	139.7	200



PCCG016 结构图

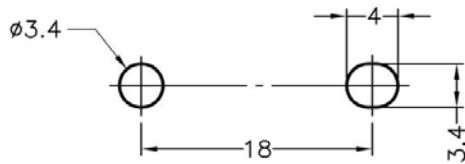
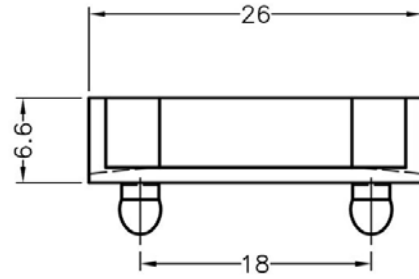
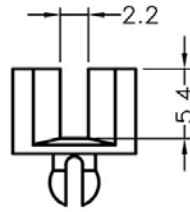
产品名称: PC 板导槽|PCB 板导槽

PART NO: PCCG016

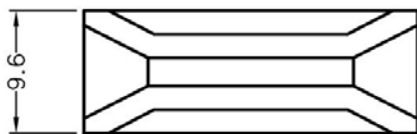
- ◆ MATERIAL: NYLON 66(UL)
- ◆ FLAME CLASS: 94V-0,94V-2
- ◆ COLOR: BLACK, NATURAL
- ◆ UNIT: mm

用途: 固定 PC 板|PCB 板于机壳上, 安装方便, 免螺丝。

所有尺寸量测皆不含进胶口, 胶口凸出 0.3mm 之内



MOUNTING HOLE



	PART NO	PACKAGE
	PCCG016	500

南京诺金电气有限公司

Nanjing Nowking Electric Co., Ltd



产品名称: PC 板导槽|PCB 板导槽

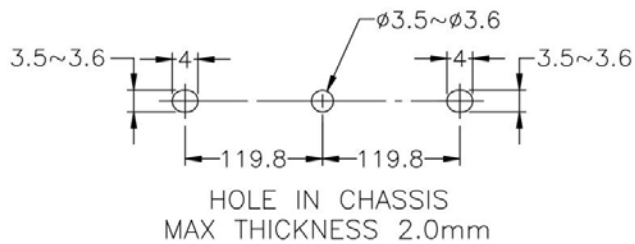
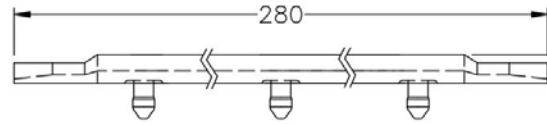
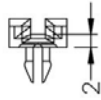
PART NO: PCCG017

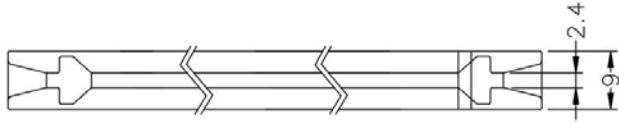
- ◆ MATERIAL: NYLON 66(UL)
- ◆ FLAME CLASS: 94V-0, 94V-2
- ◆ COLOR: BLACK, NATURAL
- ◆ UNIT: mm

用途: 固定 PC 板|PCB 板于机壳上, 安装方便, 免螺丝。

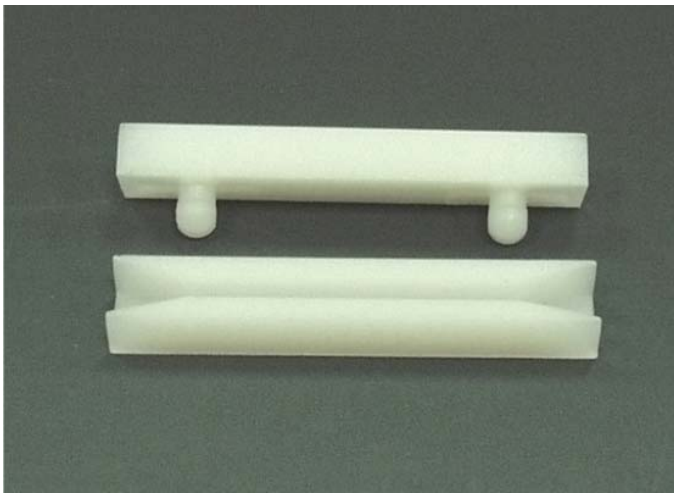
所有尺寸量测皆不含进胶口, 胶口凸出 0.3mm 之内

PCCG017 结构图





	PART NO	PACKAGE
	PCCG017	100



产品名称: PC 板导槽|PCB 板导槽

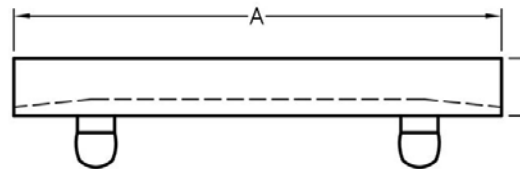
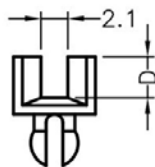
PART NO: PCCG018

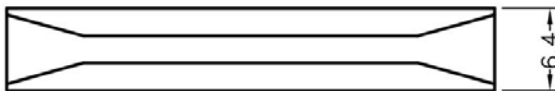
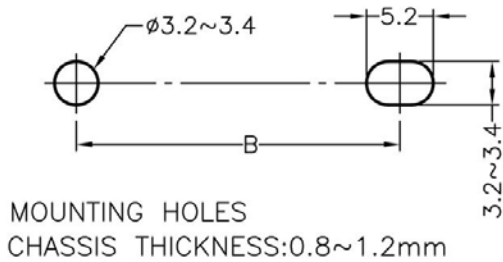
- ◆ MATERIAL: NYLON 66(UL)
- ◆ FLAME CLASS: 94V-0, 94V-2
- ◆ COLOR: BLACK, NATURAL
- ◆ UNIT: mm

用途: 固定 PC 板|PCB 板于机壳上, 安装方便, 免螺丝。

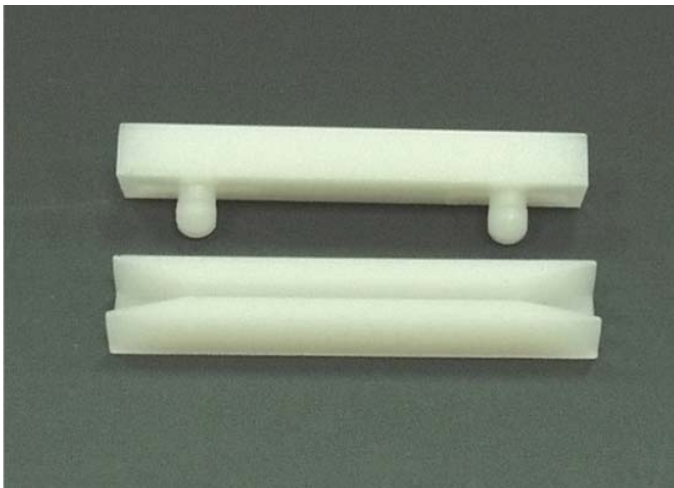
所有尺寸量测皆不含进胶口, 胶口凸出 0.3mm 之内

PCCG018 结构图





	PART NO	A	B	C	D	PACKAGE
	PCCG018	38.0	25.4	4.5	3.2	500



PCCG019 结构图

产品名称: PC 板导槽|PCB 板导槽

PART NO: PCCG019

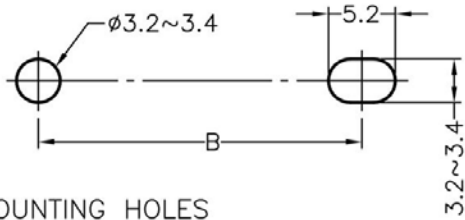
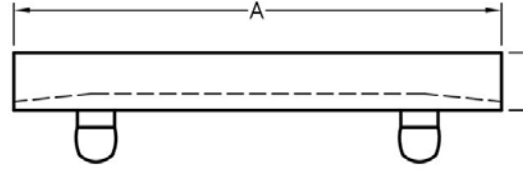
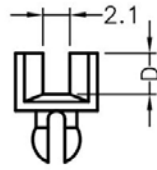
- ◆ MATERIAL: NYLON 66(UL)
- ◆ FLAME CLASS: 94V-0,94V-2
- ◆ COLOR: BLACK,NATURAL
- ◆ UNIT:mm

用途: 固定 PC 板|PCB 板于机壳上, 安装方便, 免螺丝。

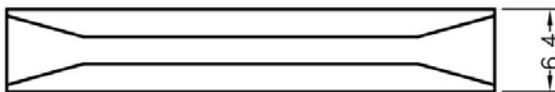
所有尺寸量测皆不含进胶口, 胶口凸出 0.3mm 之内

南京诺金电气有限公司

Nanjing Nowking Electric Co., Ltd



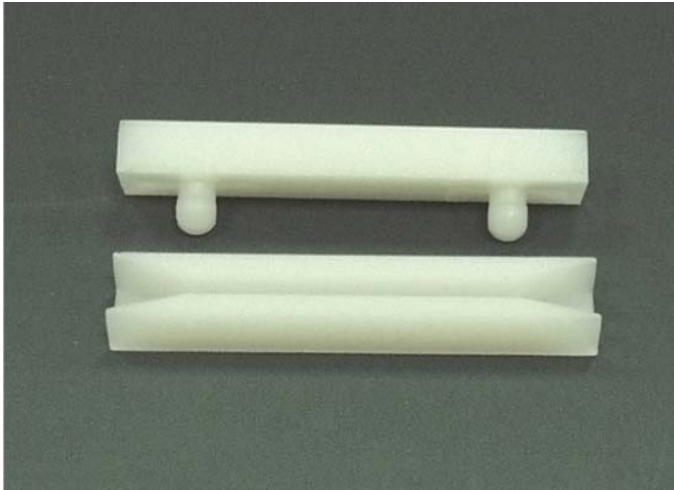
MOUNTING HOLES
CHASSIS THICKNESS: 0.8~1.2mm



	PART NO	A	B	C	D	PACKAGE
	PCCG019	58.0	38.0	4.5	3.2	500

南京诺金电气有限公司

Nanjing Nowking Electric Co., Ltd



产品名称: PC 板导槽|PCB 板导槽

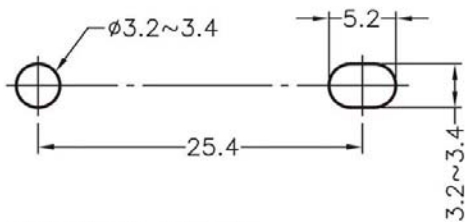
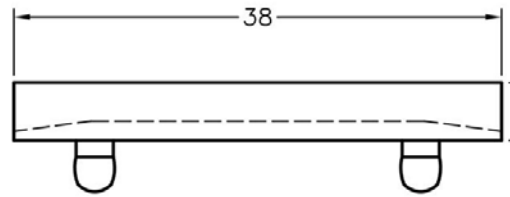
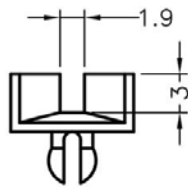
PART NO: PCCG020

- ◆ MATERIAL: NYLON 66(UL)
- ◆ FLAME CLASS: 94V-2
- ◆ COLOR: NATURAL
- ◆ UNIT: mm

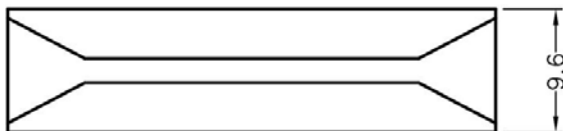
用途: 固定 PC 板|PCB 板于机壳上, 安装方便, 免螺丝。

所有尺寸量测皆不含进胶口, 胶口凸出 0.3mm 之内

PCCG020 结构图



MOUNTING HOLES
CHASSIS THICKNESS: 1.0~1.6mm



	PART NO	PACKAGE
	PCCG020	500



产品名称: PC 板导槽|PCB 板导槽

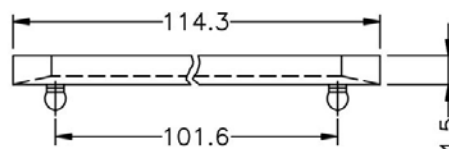
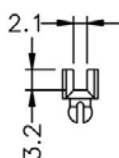
PART NO: PCCG021

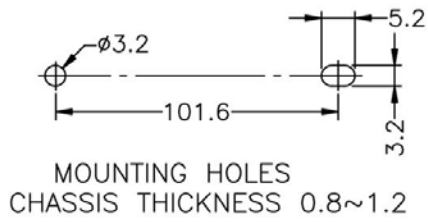
- ◆ MATERIAL: NYLON 66(UL)
- ◆ FLAME CLASS: 94V-0, 94V-2
- ◆ COLOR: BLACK, NATURAL
- ◆ UNIT: mm

用途: 固定 PC 板|PCB 板于机壳上, 安装方便, 免螺丝。

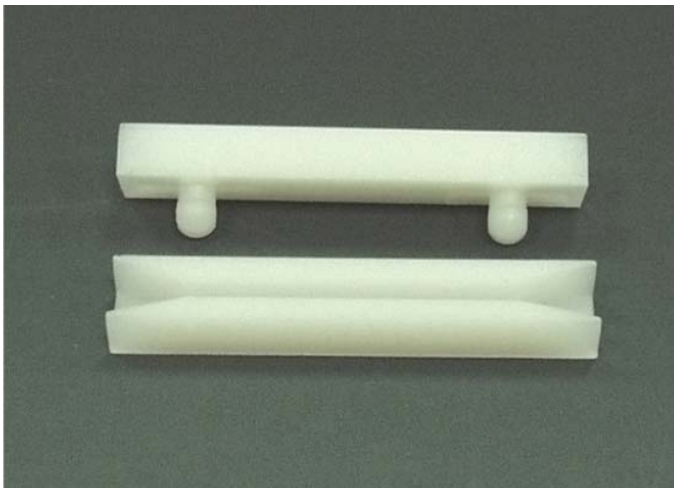
所有尺寸量测皆不含进胶口, 胶口凸出 0.3mm 之内

PCCG021 结构图





	PART NO	PACKAGE
	PCCG021	500



PCCG022 结构图

产品名称: PC 板导槽|PCB 板导槽

PART NO: PCCG022

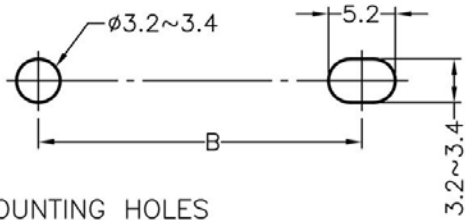
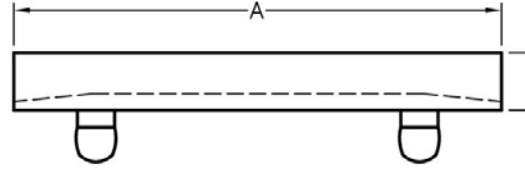
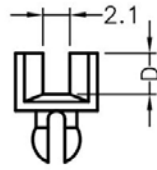
- ◆ MATERIAL: NYLON 66(UL)
- ◆ FLAME CLASS: 94V-0, 94V-2
- ◆ COLOR: BLACK, NATURAL
- ◆ UNIT: mm

用途: 固定 PC 板|PCB 板于机壳上, 安装方便, 免螺丝。

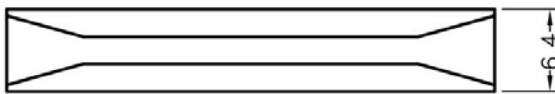
所有尺寸量测皆不含进胶口, 胶口凸出 0.3mm 之内

南京诺金电气有限公司

Nanjing Nowking Electric Co., Ltd



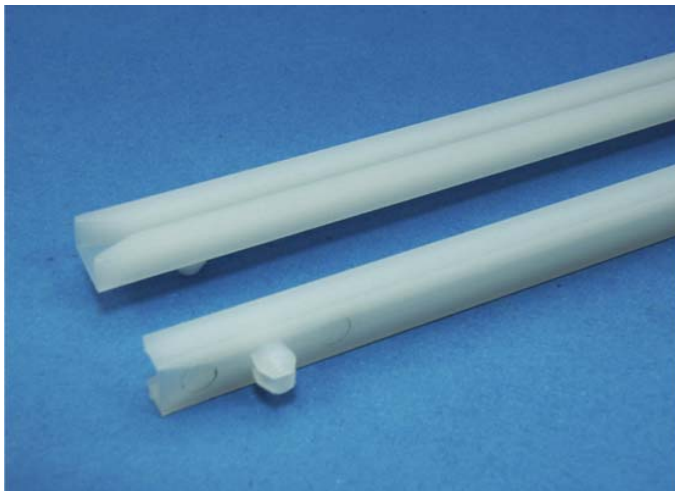
MOUNTING HOLES
CHASSIS THICKNESS: 0.8~1.2mm



	PART NO	A	B	C	D	PACKAGE
	PCCG022	58.0	38.0	2.5	1.2	500

南京诺金电气有限公司

Nanjing Nowking Electric Co., Ltd



产品名称: PC 板导槽|PCB 板导槽

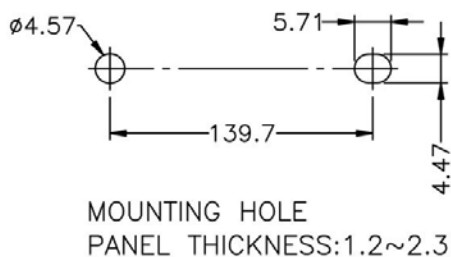
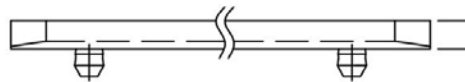
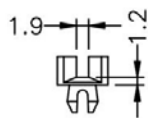
PART NO: PCCG023

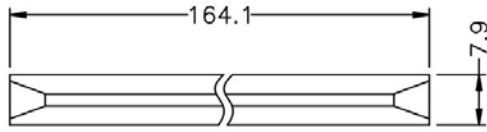
- ◆ MATERIAL: NYLON 66(UL)
- ◆ FLAME CLASS: 94V-0, 94V-2
- ◆ COLOR: BLACK, NATURAL
- ◆ UNIT: mm

用途: 固定 PC 板|PCB 板于机壳上, 安装方便, 免螺丝。

所有尺寸量测皆不含进胶口, 胶口凸出 0.3mm 之内

PCCG023 结构图





	PART NO	PACKAGE
	PCCG023	500



PCCG024 结构图

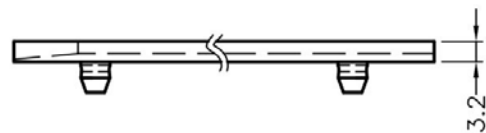
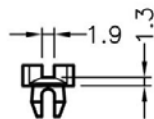
产品名称: PC 板导槽|PCB 板导槽

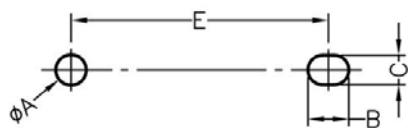
PART NO: PCCG024

- ◆ MATERIAL: NYLON 66(UL)
- ◆ FLAME CLASS: 94V-0, 94V-2
- ◆ COLOR: BLACK, NATURAL
- ◆ UNIT: mm

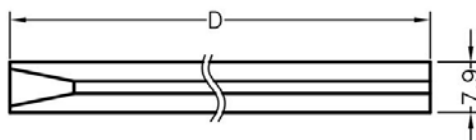
用途: 固定 PC 板|PCB 板于机壳上, 安装方便, 免螺丝。

所有尺寸量测皆不含进胶口, 胶口凸出 0.3mm 之内





MOUNTING HOLES
 PANEL THICKNESS:1.2~2.3 mm



PART NO	A	B	C	D	E	PACKAGE
PCCG024	4.75	6.35	4.62	177.8	152.4	100



PCCG025 结构图

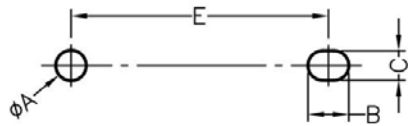
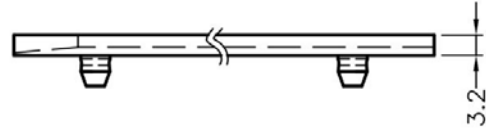
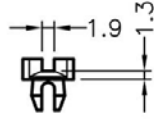
产品名称: PC 板导槽|PCB 板导槽

PART NO: PCCG025

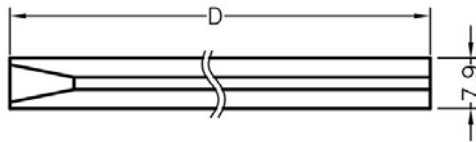
- ◆ MATERIAL: NYLON 66(UL)
- ◆ FLAME CLASS: 94V-0,94V-2
- ◆ COLOR: BLACK, NATURAL
- ◆ UNIT: mm

用途: 固定 PC 板|PCB 板于机壳上, 安装方便, 免螺丝。

所有尺寸量测皆不含进胶口, 胶口凸出 0.3mm 之内



MOUNTING HOLES
 PANEL THICKNESS: 1.2~2.3 mm



	PART NO	A	B	C	D	E	PACKAGE
	PCCG025	4.5	5.6	4.4	177.8	152.4	100

南京诺金电气有限公司

Nanjing Nowking Electric Co., Ltd



产品名称: PC 板导槽|PCB 板导槽

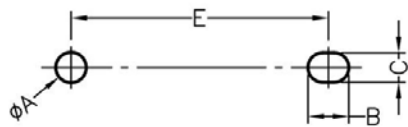
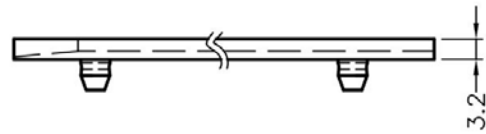
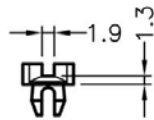
PART NO: PCCG026

- ◆ MATERIAL: NYLON 66(UL)
- ◆ FLAME CLASS: 94V-0, 94V-2
- ◆ COLOR: BLACK, NATURAL
- ◆ UNIT: mm

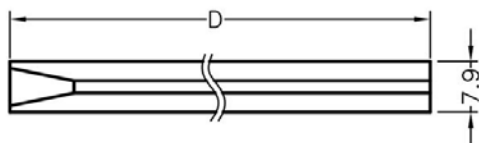
用途: 固定 PC 板|PCB 板于机壳上, 安装方便, 免螺丝。

所有尺寸量测皆不含进胶口, 胶口凸出 0.3mm 之内

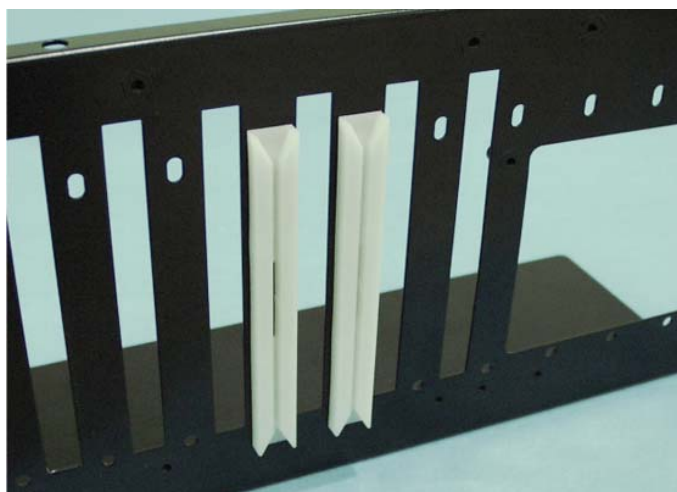
PCCG026 结构图



MOUNTING HOLES
PANEL THICKNESS: 1.2~2.3 mm



PART NO	A	B	C	D	E	PACKAGE
PCCG026	4.57	5.71	4.47	190.5	165.1	100



产品名称: PC 板导槽|PCB 板导槽

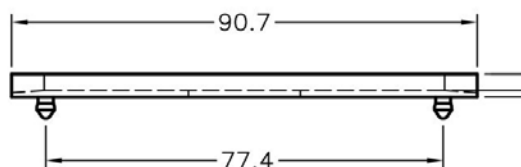
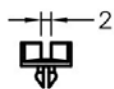
PART NO: PCCG027

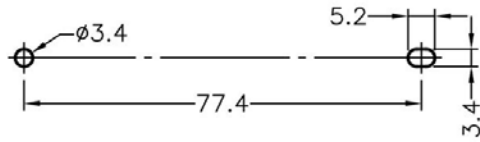
- ◆ MATERIAL: NYLON 66(UL)
- ◆ FLAME CLASS: 94V-0,94V-2
- ◆ COLOR: BLACK, NATURAL
- ◆ UNIT: mm

用途: 固定 PC 板|PCB 板于机壳上, 安装方便, 免螺丝。

所有尺寸量测皆不含进胶口, 胶口凸出 0.3mm 之内

PCCG027 结构图

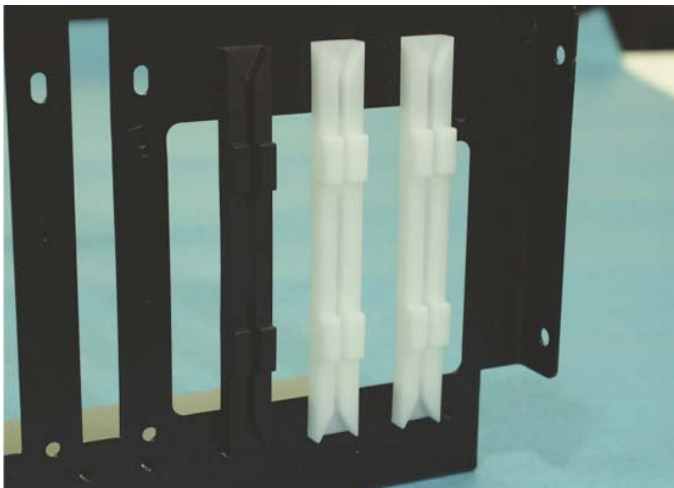




MOUNTING HOLE



	PART NO	PACKAGE
	PCCG027	250



PCCG028 结构图

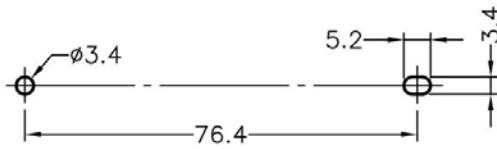
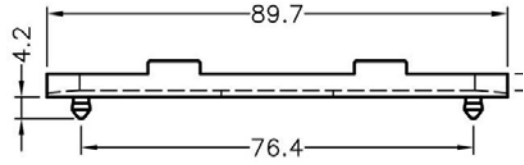
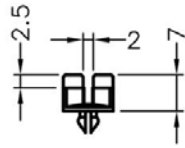
产品名称: PC 板导槽|PCB 板导槽

PART NO: PCCG028

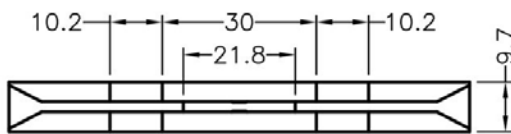
- ◆ MATERIAL: NYLON 66(UL)
- ◆ FLAME CLASS: 94V-0,94V-2
- ◆ COLOR: BLACK,NATURAL
- ◆ UNIT:mm

用途: 固定 PC 板|PCB 板于机壳上, 安装方便, 免螺丝。

所有尺寸量测皆不含进胶口, 胶口凸出 0.3mm 之内



MOUNTION HOLE



	PART NO	PACKAGE
	PCCG028	250

南京诺金电气有限公司

Nanjing Nowking Electric Co., Ltd



产品名称: PC 板导槽|PCB 板导槽

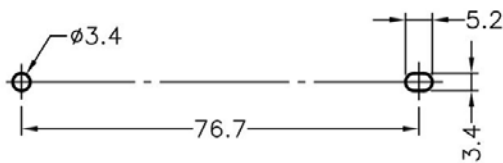
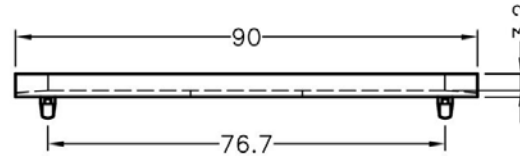
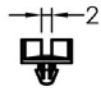
PART NO: PCCG029

- ◆ MATERIAL: NYLON 66(UL)
- ◆ FLAME CLASS: 94V-0,94V-2
- ◆ COLOR: BLACK,NATURAL
- ◆ UNIT:mm

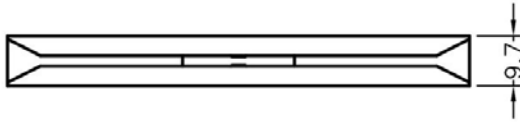
用途: 固定 PC 板|PCB 板于机壳上, 安装方便, 免螺丝。

所有尺寸量测皆不含进胶口, 胶口凸出 0.3mm 之内

PCCG029 结构图



MOUNTING HOLE
CHASSIS THICKNESS 1.2mm



	PART NO	PACKAGE
	PCCG029	250



产品名称: PC 板导槽|PCB 板导槽

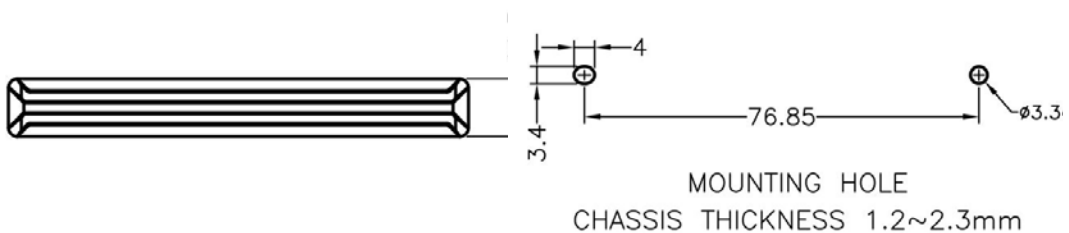
PART NO: PCCG030

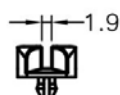
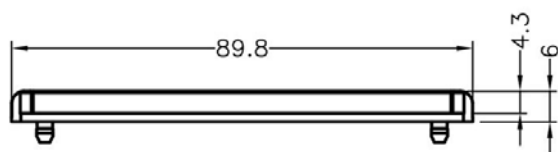
- ◆ MATERIAL: NYLON 66(UL)
- ◆ FLAME CLASS: 94V-0,94V-2
- ◆ COLOR: BLACK,NATURAL
- ◆ UNIT:mm

用途: 固定 PC 板|PCB 板于机壳上, 安装方便, 免螺丝。

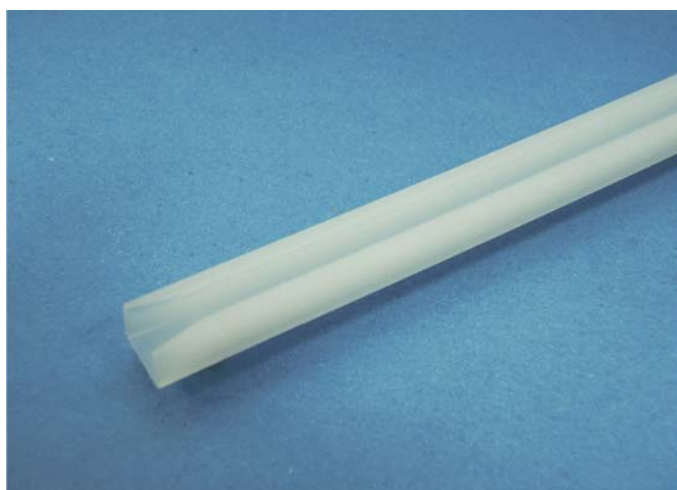
所有尺寸量测皆不含进胶口, 胶口凸出 0.3mm 之内

PCCG030 结构图





	PART NO	PACKAGE
	PCCG030	500



PCCG031 结构图

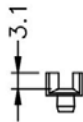
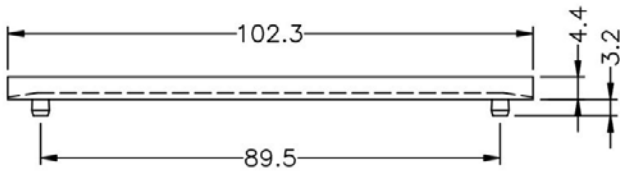
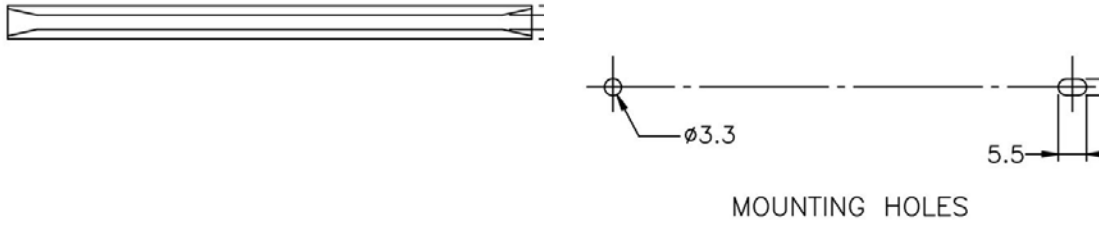
产品名称: PC 板导槽|PCB 板导槽

PART NO: PCCG031

- ◆ MATERIAL: NYLON 66(UL)
- ◆ FLAME CLASS: 94V-0, 94V-2
- ◆ COLOR: BLACK, NATURAL
- ◆ UNIT: mm

用途: 固定 PC 板|PCB 板于机壳上, 安装方便, 免螺丝。

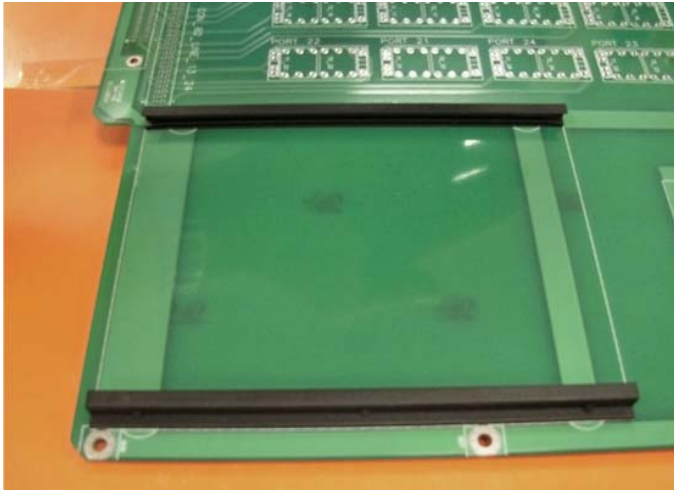
所有尺寸量测皆不含进胶口, 胶口凸出 0.3mm 之内



	PART NO	PACKAGE
	PCCG031	250

南京诺金电气有限公司

Nanjing Nowking Electric Co., Ltd



产品名称: PC 板导槽|PCB 板导槽

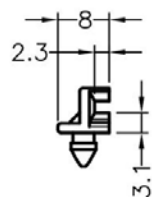
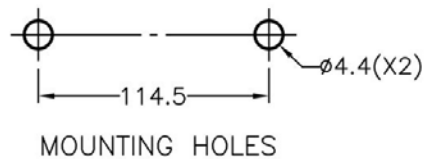
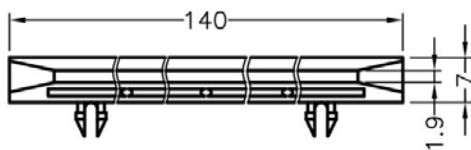
PART NO: PCCG032

- ◆ MATERIAL: NYLON 66(UL)
- ◆ FLAME CLASS: 94V-0, 94V-2
- ◆ COLOR: BLACK, NATURAL
- ◆ UNIT: mm

用途: 固定 PC 板|PCB 板于机壳上, 安装方便, 无方向性, 免螺丝。

所有尺寸量测皆不含进胶口, 胶口凸出 0.3mm 之内

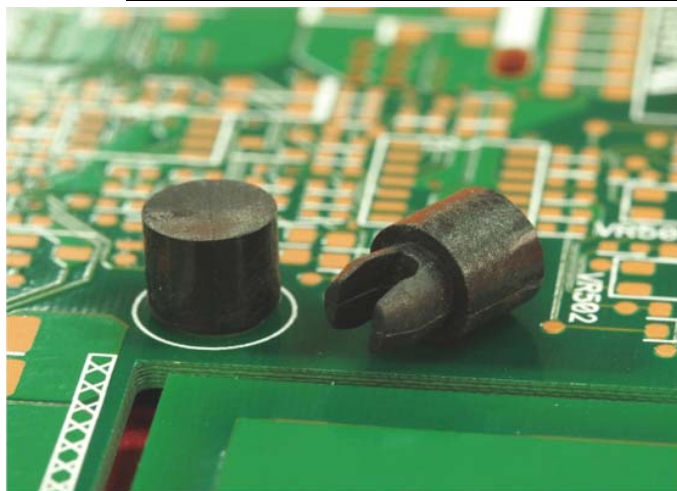
PCCG032 结构图



	PART NO	PACKAGE
	PCCG032	100

南京诺金电气有限公司

Nanjing Nowking Electric Co., Ltd



产品名称: PC 板导槽|PCB 板导槽

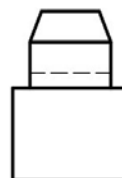
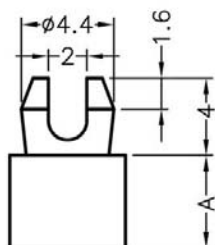
PART NO: PCCG033

- ◆ MATERIAL: NYLON 66(UL)
- ◆ FLAME CLASS: 94V-0, 94V-2
- ◆ COLOR: BLACK, NATURAL
- ◆ UNIT: mm

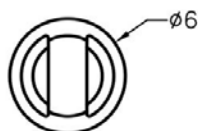
用途: 固定 PC 板|PCB 板于机壳上, 安装方便, 无方向性, 免螺丝。

所有尺寸量测皆不含进胶口, 胶口凸出 0.3mm 之内

PCCG033 结构图



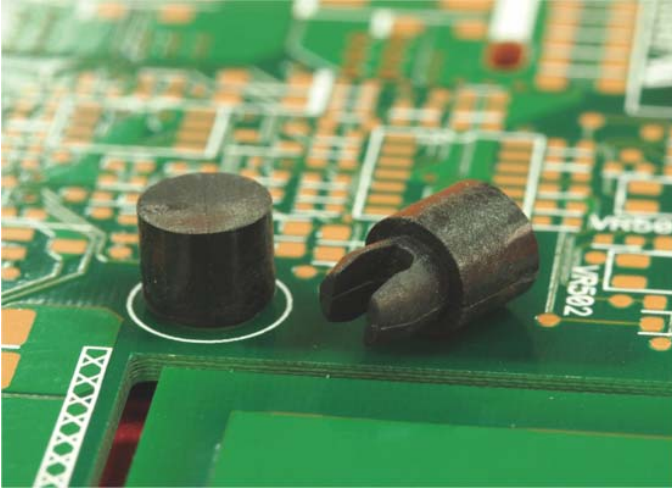
HOLE IN CHASSIS $\phi 4.3$
BOARD THICKNESS 1.6~2.0



	PART NO	A	PACKAGE
	PCCG033	2.0	2000

南京诺金电气有限公司

Nanjing Nowking Electric Co., Ltd



产品名称: PC 板导槽|PCB 板导槽

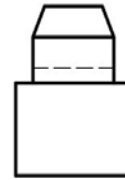
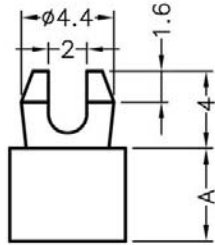
PART NO: PCCG034

- ◆ MATERIAL: NYLON 66(UL)
- ◆ FLAME CLASS: 94V-0, 94V-2
- ◆ COLOR: BLACK, NATURAL
- ◆ UNIT: mm

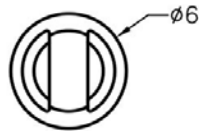
用途: 固定 PC 板|PCB 板于机壳上, 安装方便, 无方向性, 免螺丝。

所有尺寸量测皆不含进胶口, 胶口凸出 0.3mm 之内

PCCG034 结构图



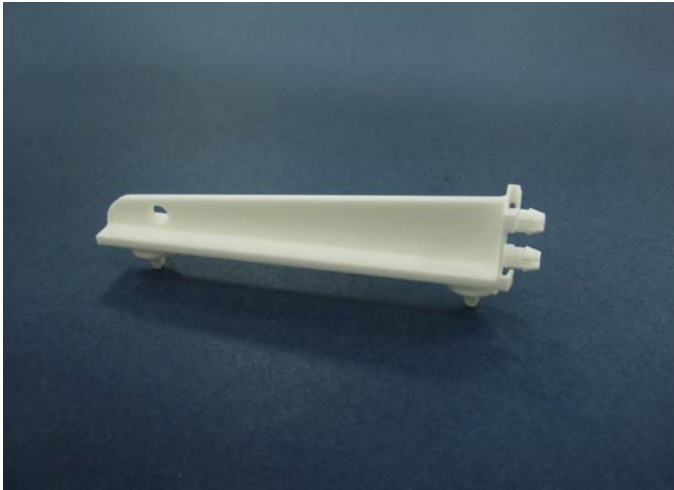
HOLE IN CHASSIS $\phi 4.3$
BOARD THICKNESS 1.6~2.0



	PART NO	A	PACKAGE
	PCCG034	4.8	2000

南京诺金电气有限公司

Nanjing Nowking Electric Co., Ltd



产品名称: PC 板导槽|PCB 板导槽

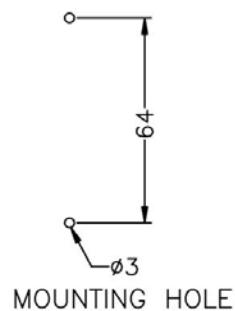
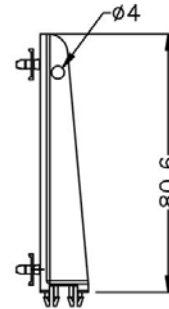
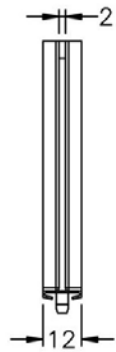
PART NO: PCCG035

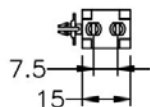
- ◆ MATERIAL: NYLON 66(UL)
- ◆ FLAME CLASS: 94V-0, 94V-2
- ◆ COLOR: BLACK, NATURAL
- ◆ UNIT: mm

用途: 固定 PC 板|PCB 板于机壳上, 安装方便, 无方向性, 免螺丝。

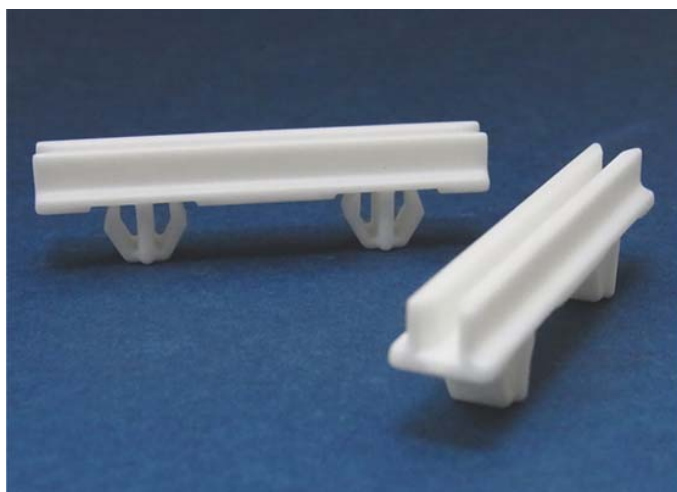
所有尺寸量测皆不含进胶口, 胶口凸出 0.3mm 之内

PCCG035 结构图





	PART NO	PACKAGE
	PCCG035	250



产品名称: PC 板导槽|PCB 板导槽

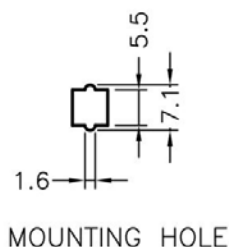
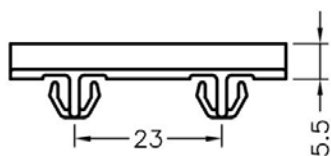
PART NO: PCCG036

- ◆ MATERIAL: NYLON 66(UL)
- ◆ FLAME CLASS: 94V-0, 94V-2
- ◆ COLOR: BLACK, NATURAL
- ◆ UNIT: mm

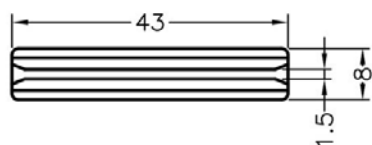
用途: 固定 PC 板|PCB 板于机壳上, 安装方便, 无方向性, 免螺丝。

所有尺寸量测皆不含进胶口, 胶口凸出 0.3mm 之内

PCCG036 结构图



MOUNTING HOLE



	PART NO	PACKAGE
	PCCG036	500



PCCG037 结构图

产品名称: PC 板导槽|PCB 板导槽

PART NO: PCCG037

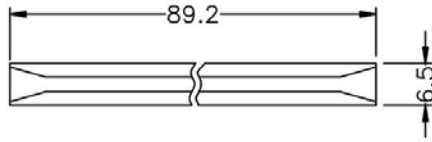
- ◆ MATERIAL: NYLON 66(UL)
- ◆ FLAME CLASS: 94V-0, 94V-2
- ◆ COLOR: BLACK, NATURAL
- ◆ UNIT: mm

用途: 固定 PC 板|PCB 板于机壳上, 安装方便, 无方向性, 免螺丝。

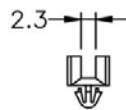
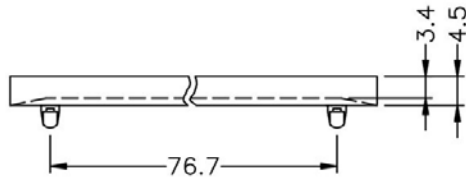
所有尺寸量测皆不含进胶口, 胶口凸出 0.3mm 之内

南京诺金电气有限公司

Nanjing Nowking Electric Co., Ltd



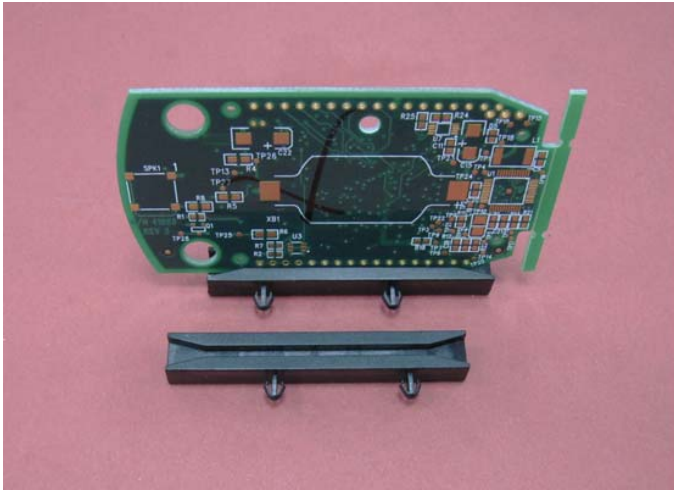
MOUNTING HOLES
CHASSIS THICKNESS 0.8mm



	PART NO	PACKAGE
	PCCG037	250

南京诺金电气有限公司

Nanjing Nowking Electric Co., Ltd



产品名称: PC 板导槽|PCB 板导槽

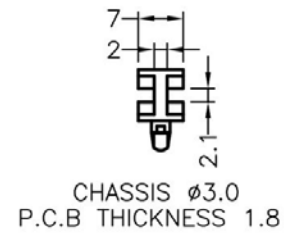
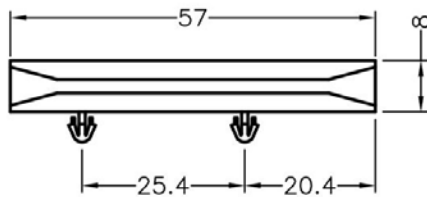
PART NO: PCCG038

- ◆ MATERIAL: NYLON 66(UL)
- ◆ FLAME CLASS: 94V-0, 94V-2
- ◆ COLOR: BLACK, NATURAL
- ◆ UNIT: mm

用途: 固定 PC 板|PCB 板于机壳上, 安装方便, 无方向性, 免螺丝。

所有尺寸量测皆不含进胶口, 胶口凸出 0.3mm 之内

PCCG038 结构图



	PART NO	PACKAGE
	PCCG038	500

南京诺金电气有限公司

Nanjing Nowking Electric Co., Ltd



产品名称: PC 板导槽|PCB 板导槽

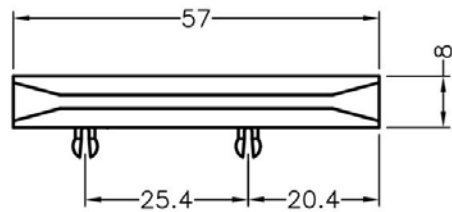
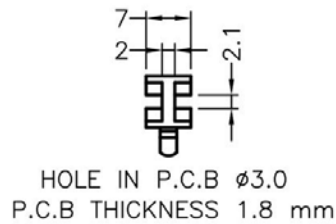
PART NO: PCCG039

- ◆ MATERIAL: NYLON 66(UL)
- ◆ FLAME CLASS: 94V-0, 94V-2
- ◆ COLOR: BLACK, NATURAL
- ◆ UNIT: mm

用途: 固定 PC 板|PCB 板于机壳上, 安装方便, 无方向性, 免螺丝。

所有尺寸量测皆不含进胶口, 胶口凸出 0.3mm 之内

PCCG039 结构图



	PART NO	PACKAGE
	PCCG039	500

南京诺金电气有限公司

Nanjing Nowking Electric Co., Ltd



产品名称: PC 板导槽|PCB 板导槽

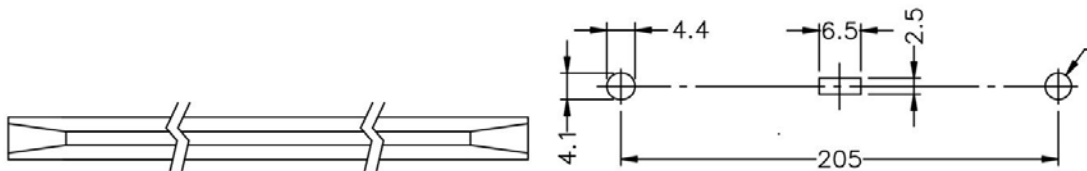
PART NO: PCCG040

- ◆ MATERIAL:PC(UL)
- ◆ FLAME CLASS: 94V-2
- ◆ COLOR:BLACK
- ◆ UNIT:mm

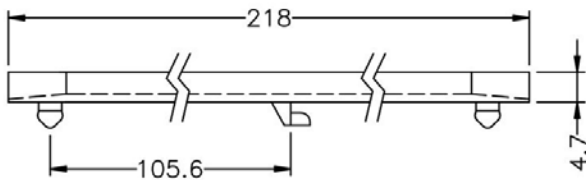
用途: 固定 PC 板|PCB 板于机壳上, 安装方便, 无方向性, 免螺丝。

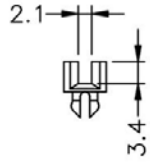
所有尺寸量测皆不含进胶口,胶口凸出 0.3mm 之内

PCCG040 结构图

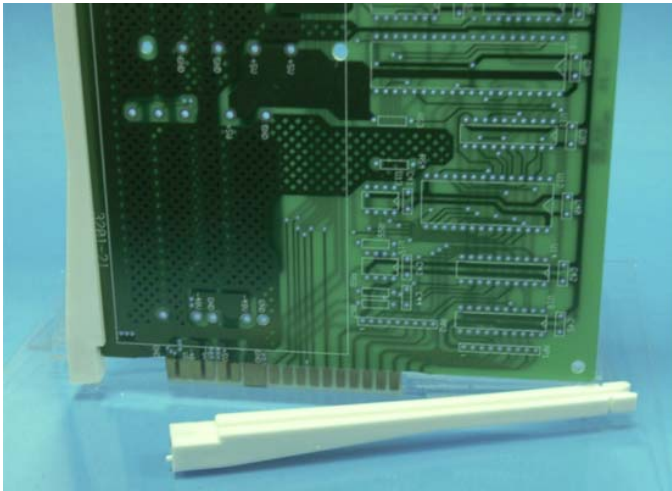


MOUNTING HOLES
CHASSIS THICKNESS:1.2





	PART NO	PACKAGE
	PCCG040	100



产品名称: PC 板导槽|PCB 板导槽

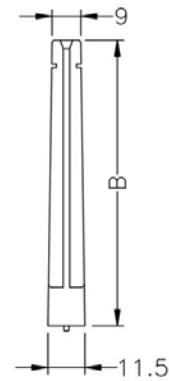
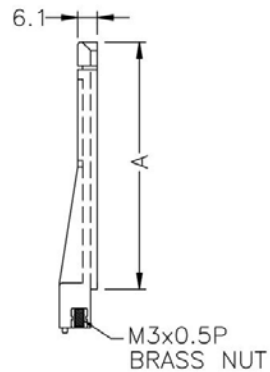
PART NO: PCCG041

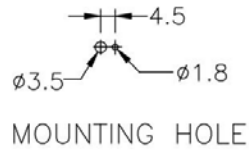
- ◆ MATERIAL: NYLON 66(UL)
- ◆ FLAME CLASS: 94V-0,94V-2
- ◆ COLOR: BLACK,NATURAL
- ◆ UNIT:mm

用途: 固定 PC 板|PCB 板于机壳上或 PC 板上, 安装方便, 不脱落。

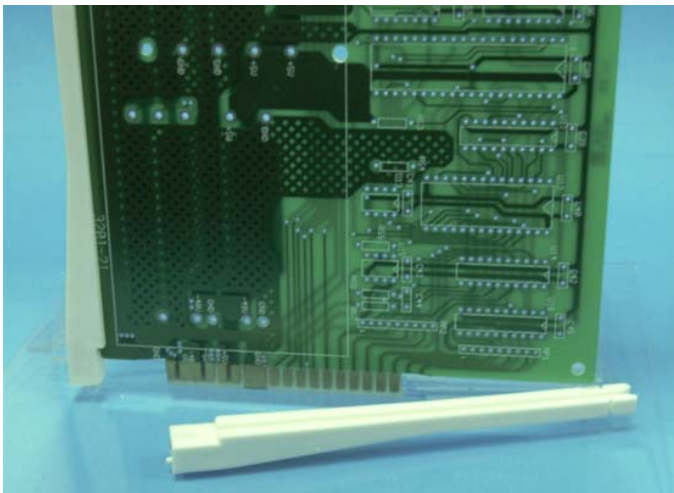
所有尺寸量测皆不含进胶口,胶口凸出 0.3mm 之内

PCCG041 结构图





	PART NO	A	B	PACKAGE
	PCCG041	77.2	89.2	200



产品名称: PC 板导槽|PCB 板导槽

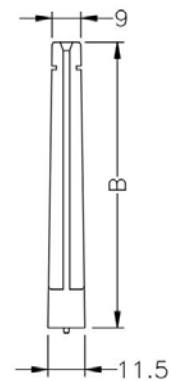
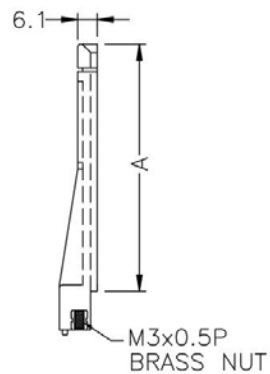
PART NO: PCCG042

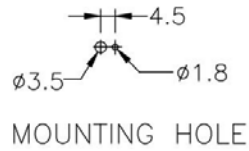
- ◆ MATERIAL: NYLON 66(UL)
- ◆ FLAME CLASS: 94V-0, 94V-2
- ◆ COLOR: BLACK, NATURAL
- ◆ UNIT: mm

用途: 固定 PC 板|PCB 板于机壳上或 PC 板上, 安装方便, 不脱落。

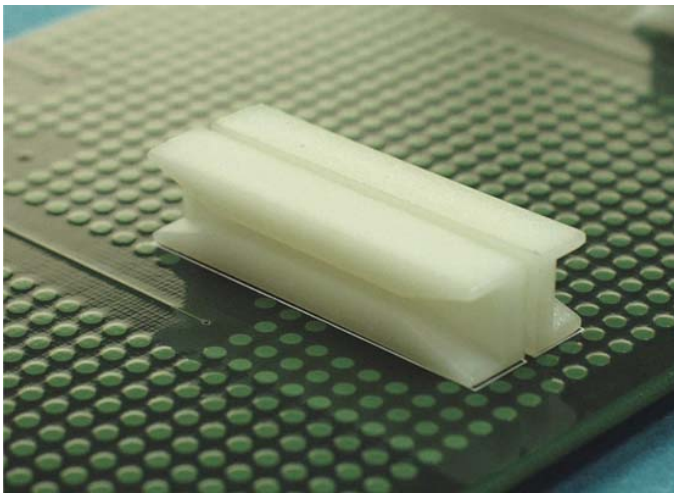
所有尺寸量测皆不含进胶口, 胶口凸出 0.3mm 之内

PCCG042 结构图





	PART NO	A	B	PACKAGE
	PCCG042	118.5	130.0	100



产品名称: PC 板导槽|PCB 板导槽

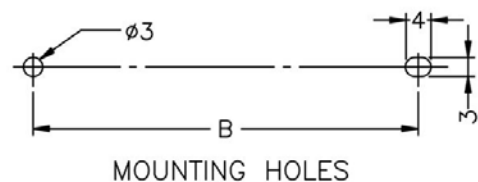
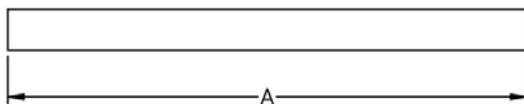
PART NO: PCCG043

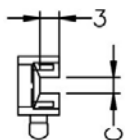
- ◆ MATERIAL: NYLON 66(UL)
- ◆ FLAME CLASS: 94V-0, 94V-2
- ◆ COLOR: BLACK, NATURAL
- ◆ UNIT: mm

用途: 固定 PC 板|PCB 板于机壳上, 安装方便, 免螺丝。

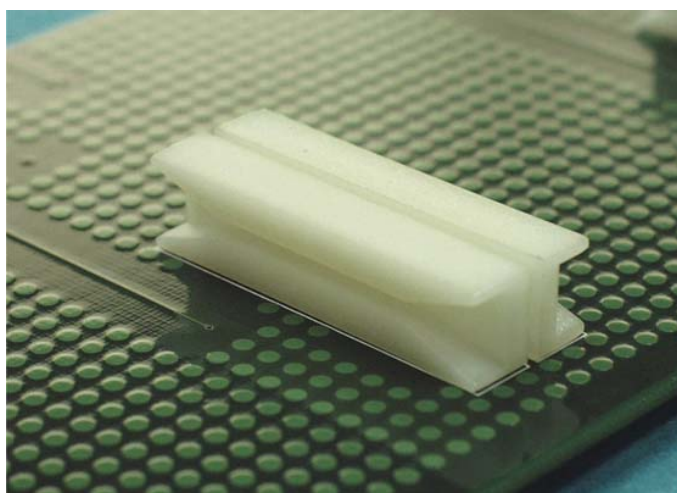
所有尺寸量测皆不含进胶口, 胶口凸出 0.3mm 之内

PCCG043 结构图





	PART NO	A	B	C	PACKAGE
	PCCG043	38.4	20.0	2.0	500



PCCG044 结构图

产品名称: PC 板导槽|PCB 板导槽

PART NO: PCCG044

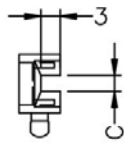
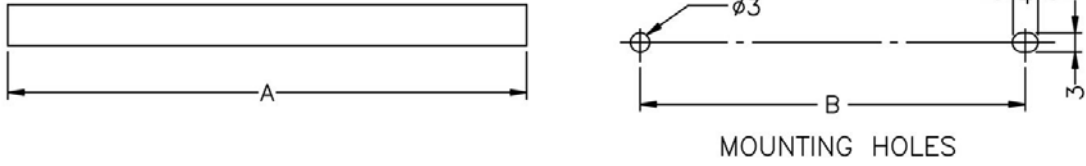
- ◆ MATERIAL: NYLON 66 (UL)
- ◆ FLAME CLASS: 94V-0, 94V-2
- ◆ COLOR: BLACK, NATURAL
- ◆ UNIT: mm

用途: 固定 PC 板|PCB 板于机壳上, 安装方便, 免螺丝。

所有尺寸量测皆不含进胶口, 胶口凸出 0.3mm 之内

南京诺金电气有限公司

Nanjing Nowking Electric Co., Ltd



	PART NO	A	B	C	PACKAGE
	PCCG044	81.0	60.0	2.5	250

南京诺金电气有限公司

Nanjing Nowking Electric Co., Ltd



产品名称: PC 板导槽|PCB 板导槽

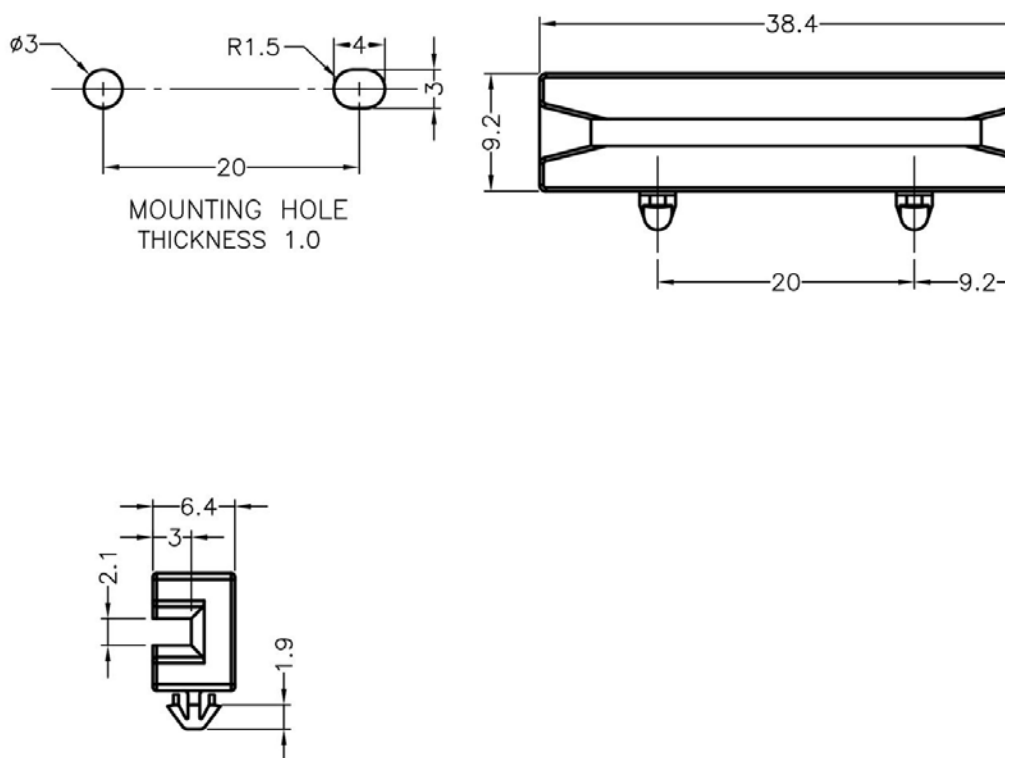
PART NO: PCCG045

- ◆ MATERIAL: NYLON 66(UL)
- ◆ FLAME CLASS: 94V-0,94V-2
- ◆ COLOR: BLACK, NATURAL, WHITE
- ◆ UNIT: mm

用途: 固定 PC 板|PCB 板于机壳上, 安装方便, 免螺丝。

所有尺寸量测皆不含进胶口, 胶口凸出 0.3mm 之内

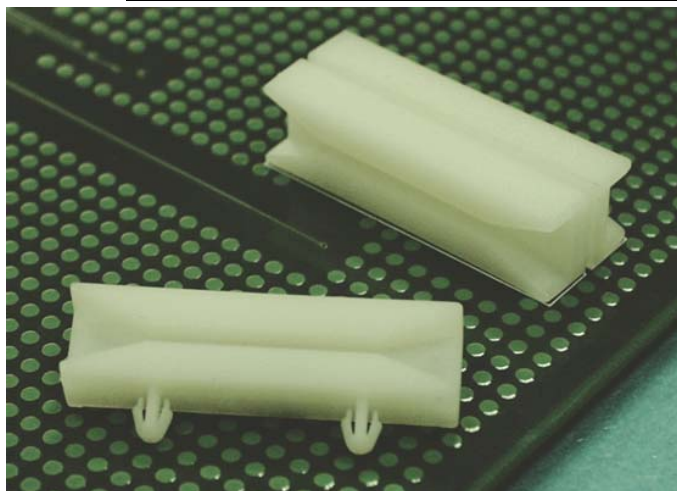
PCCG045 结构图



	PART NO	PACKAGE
	PCCG045	500

南京诺金电气有限公司

Nanjing Nowking Electric Co., Ltd



产品名称: PC 板导槽|PCB 板导槽

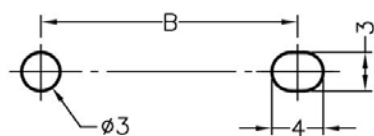
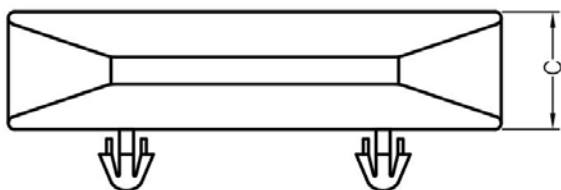
PART NO: PCCG046

- ◆ MATERIAL: NYLON 66(UL)
- ◆ FLAME CLASS: 94V-0, 94V-2
- ◆ COLOR: BLACK, NATURAL, WHITE
- ◆ UNIT: mm

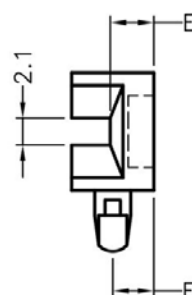
用途: 固定 PC 板|PCB 板于机壳上, 安装方便, 免螺丝。

所有尺寸量测皆不含进胶口, 胶口凸出 0.3mm 之内

PCCG046 结构图



MOUNTING HOLES
T=P.C.B THICKNESS



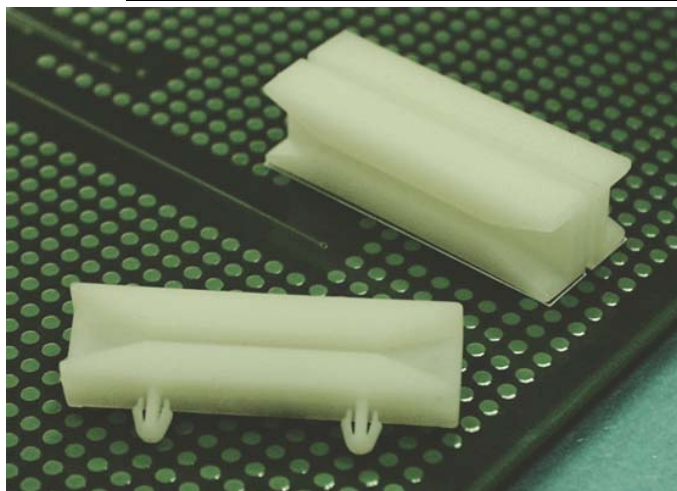
PART NO	A	B	C	D	E	F	T	PACKAGE
PCCG046	38.4	20.0	9.2	6.4	3.4	3.2	1.6~1.7	500

(规格 / 尺寸) 代码说明:

T : 板厚

南京诺金电气有限公司

Nanjing Nowking Electric Co., Ltd



产品名称: PC 板导槽|PCB 板导槽

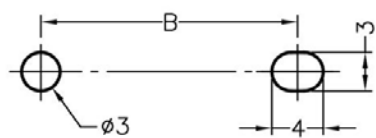
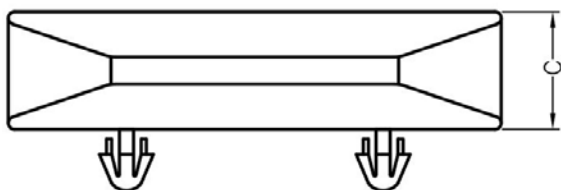
PART NO: PCCG047

- ◆ MATERIAL: NYLON 66(UL)
- ◆ FLAME CLASS: 94V-0, 94V-2
- ◆ COLOR: BLACK, NATURAL, WHITE
- ◆ UNIT: mm

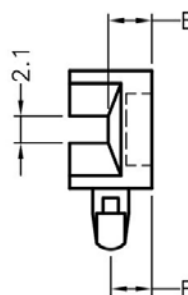
用途: 固定 PC 板|PCB 板于机壳上, 安装方便, 免螺丝。

所有尺寸量测皆不含进胶口, 胶口凸出 0.3mm 之内

PCCG047 结构图



MOUNTING HOLES
T=P.C.B THICKNESS



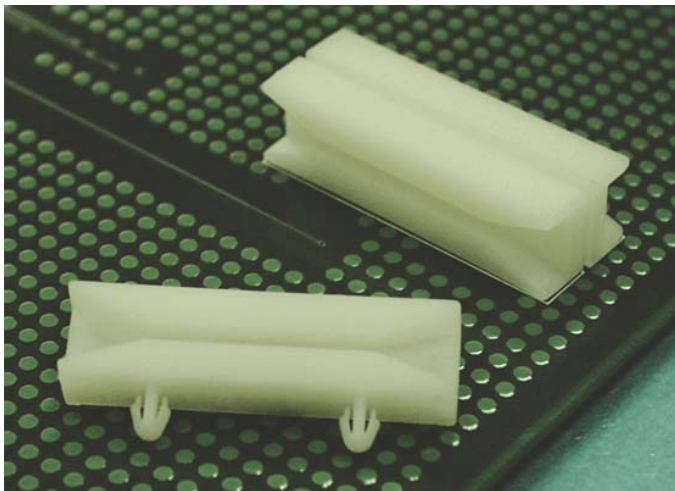
PART NO	A	B	C	D	E	F	T	PACKAGE
PCCG047	38.4	20.0	9.2	6.4	3.4	3.2	1.0	500

(规格 / 尺寸) 代码说明:

T : 板厚

南京诺金电气有限公司

Nanjing Nowking Electric Co., Ltd



产品名称: PC 板导槽|PCB 板导槽

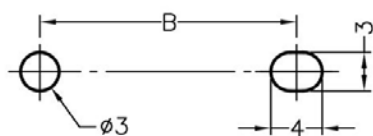
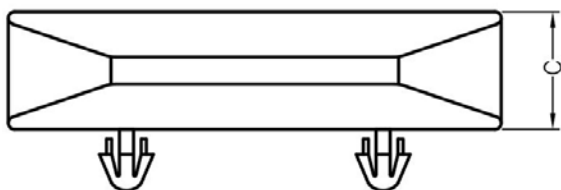
PART NO: PCCG048

- ◆ MATERIAL: NYLON 66(UL)
- ◆ FLAME CLASS: 94V-0, 94V-2
- ◆ COLOR: BLACK, NATURAL, WHITE
- ◆ UNIT: mm

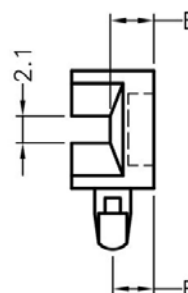
用途: 固定 PC 板|PCB 板于机壳上, 安装方便, 免螺丝。

所有尺寸量测皆不含进胶口, 胶口凸出 0.3mm 之内

PCCG048 结构图



MOUNTING HOLES
T=P.C.B THICKNESS



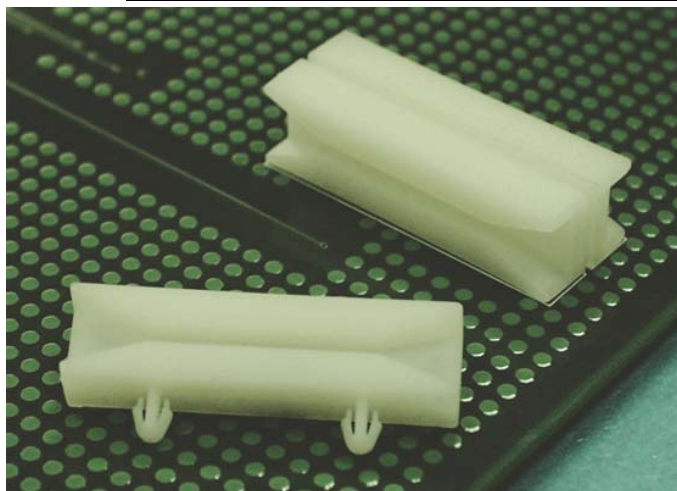
PART NO	A	B	C	D	E	F	T	PACKAGE
PCCG048	38.4	20.0	9.2	6.4	3.4	3.2	2.0	500

(规格 / 尺寸) 代码说明:

T : 板厚

南京诺金电气有限公司

Nanjing Nowking Electric Co., Ltd



产品名称: PC 板导槽|PCB 板导槽

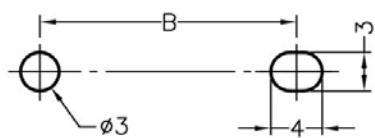
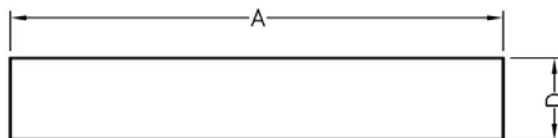
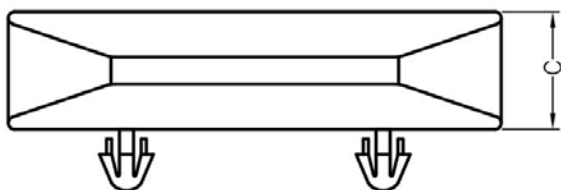
PART NO: PCCG049

- ◆ MATERIAL: NYLON 66(UL)
- ◆ FLAME CLASS: 94V-0, 94V-2
- ◆ COLOR: BLACK, NATURAL, WHITE
- ◆ UNIT: mm

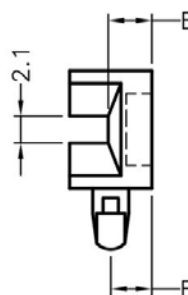
用途: 固定 PC 板|PCB 板于机壳上, 安装方便, 免螺丝。

所有尺寸量测皆不含进胶口, 胶口凸出 0.3mm 之内

PCCG049 结构图



MOUNTING HOLES
T=P.C.B THICKNESS



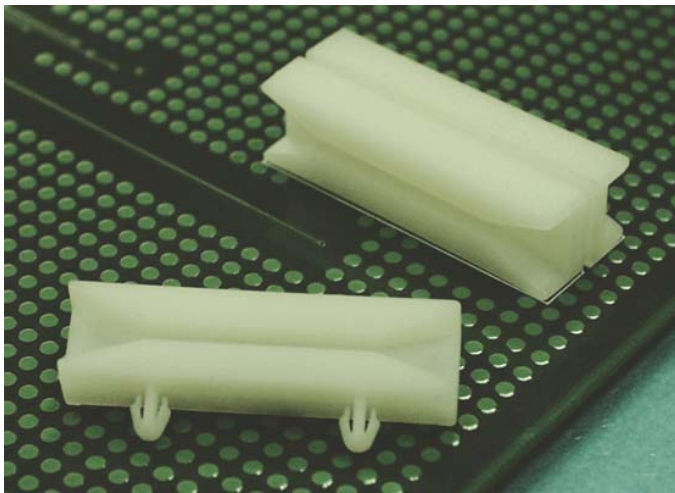
PART NO	A	B	C	D	E	F	T	PACKAGE
PCCG049	40.0	20.0	8.0	6.0	3.0	3.0	1.6	500

(规格 / 尺寸) 代码说明:

T : 板厚

南京诺金电气有限公司

Nanjing Nowking Electric Co., Ltd



产品名称: PC 板导槽|PCB 板导槽

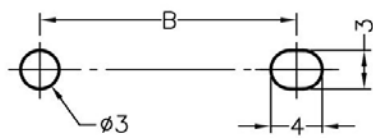
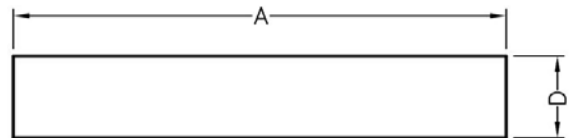
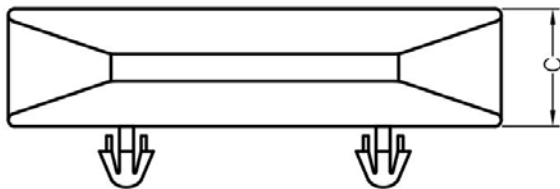
PART NO: PCCG050

- ◆ MATERIAL: NYLON 66(UL)
- ◆ FLAME CLASS: 94V-0, 94V-2
- ◆ COLOR: BLACK, NATURAL, WHITE
- ◆ UNIT: mm

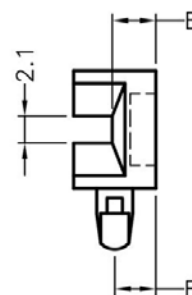
用途: 固定 PC 板|PCB 板于机壳上, 安装方便, 免螺丝。

所有尺寸量测皆不含进胶口, 胶口凸出 0.3mm 之内

PCCG050 结构图



MOUNTING HOLES
T=P.C.B THICKNESS



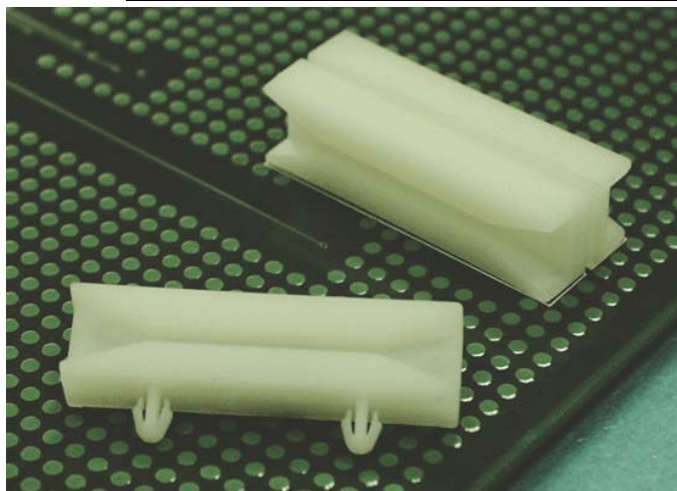
PART NO	A	B	C	D	E	F	T	PACKAGE
PCCG050	51.0	38.2	9.2	6.4	3.4	3.2	1.6~1.7	500

(规格 / 尺寸) 代码说明:

T : 板厚

南京诺金电气有限公司

Nanjing Nowking Electric Co., Ltd



产品名称: PC 板导槽|PCB 板导槽

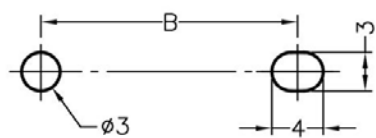
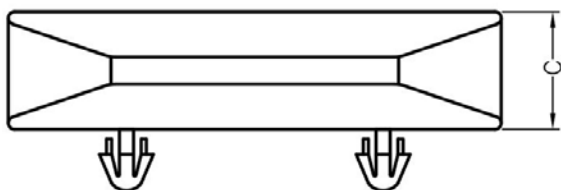
PART NO: PCCG051

- ◆ MATERIAL: NYLON 66(UL)
- ◆ FLAME CLASS: 94V-0, 94V-2
- ◆ COLOR: BLACK, NATURAL, WHITE
- ◆ UNIT: mm

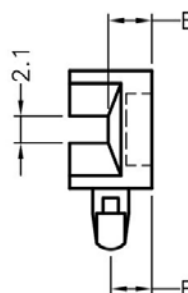
用途: 固定 PC 板|PCB 板于机壳上, 安装方便, 免螺丝。

所有尺寸量测皆不含进胶口, 胶口凸出 0.3mm 之内

PCCG051 结构图



MOUNTING HOLES
T=P.C.B THICKNESS



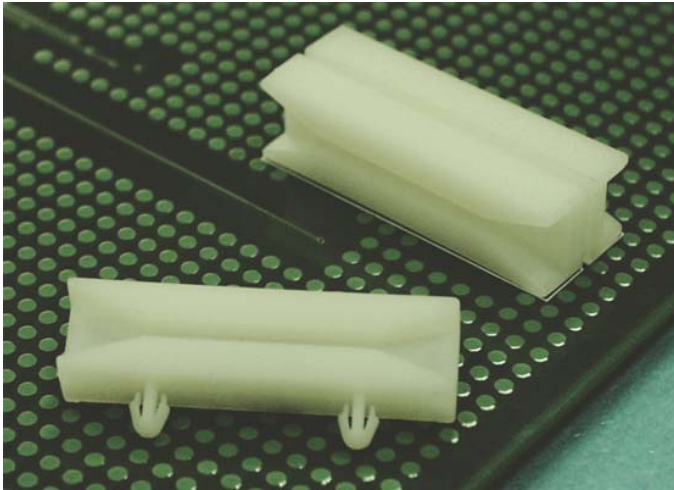
PART NO	A	B	C	D	E	F	T	PACKAGE
PCCG051	81.0	60.0	8.0	6.0	3.0	3.0	1.6~1.8	250

(规格 / 尺寸) 代码说明:

T : 板厚

南京诺金电气有限公司

Nanjing Nowking Electric Co., Ltd



产品名称: PC 板导槽|PCB 板导槽

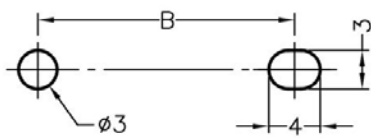
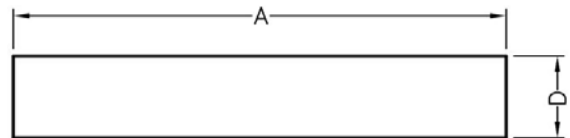
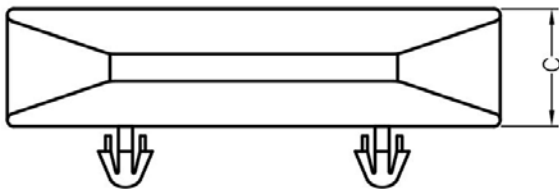
PART NO: PCCG052

- ◆ MATERIAL: NYLON 66(UL)
- ◆ FLAME CLASS: 94V-0, 94V-2
- ◆ COLOR: BLACK, NATURAL, WHITE
- ◆ UNIT: mm

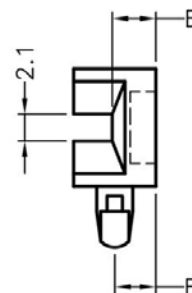
用途: 固定 PC 板|PCB 板于机壳上, 安装方便, 免螺丝。

所有尺寸量测皆不含进胶口, 胶口凸出 0.3mm 之内

PCCG052 结构图



MOUNTING HOLES
T=P.C.B THICKNESS



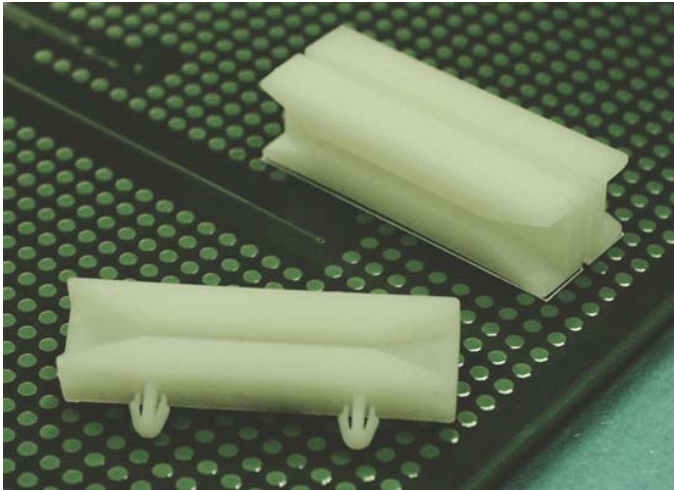
PART NO	A	B	C	D	E	F	T	PACKAGE
PCCG052	81.0	60.0	8.0	6.0	3.0	3.0	1.8~2.1	250

(规格 / 尺寸) 代码说明:

T : 板厚

南京诺金电气有限公司

Nanjing Nowking Electric Co., Ltd



产品名称: PC 板导槽|PCB 板导槽

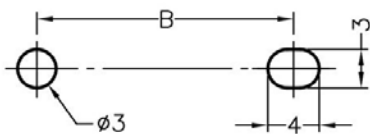
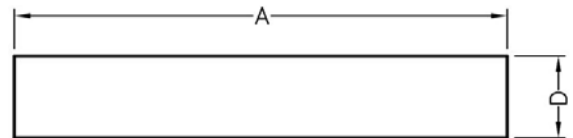
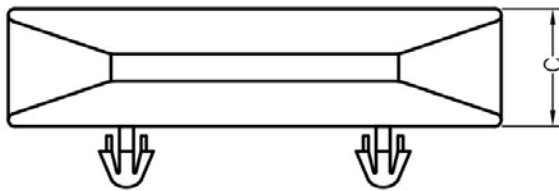
PART NO: PCCG053

- ◆ MATERIAL: NYLON 66(UL)
- ◆ FLAME CLASS: 94V-0, 94V-2
- ◆ COLOR: BLACK, NATURAL, WHITE
- ◆ UNIT: mm

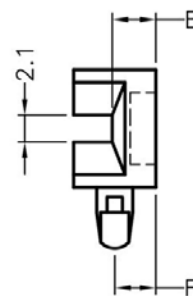
用途: 固定 PC 板|PCB 板于机壳上, 安装方便, 免螺丝。

所有尺寸量测皆不含进胶口, 胶口凸出 0.3mm 之内

PCCG053 结构图



MOUNTING HOLES
T=P.C.B THICKNESS



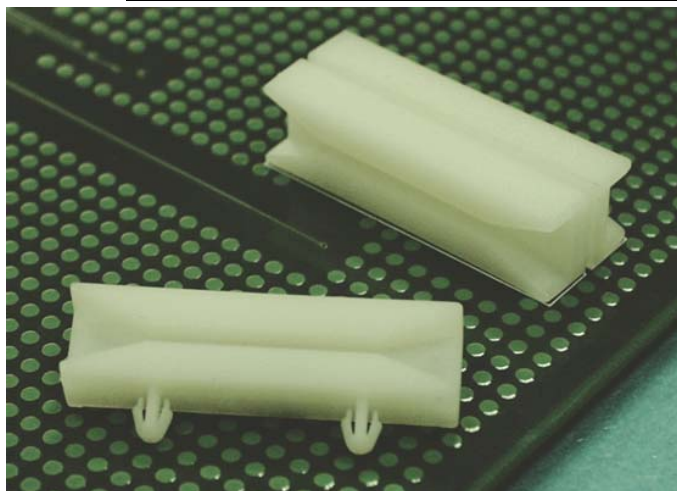
PART NO	A	B	C	D	E	F	T	PACKAGE
PCCG053	81.0	60.0	8.0	6.0	3.0	3.0	1.8	250

(规格 / 尺寸) 代码说明:

T : 板厚

南京诺金电气有限公司

Nanjing Nowking Electric Co., Ltd



产品名称: PC 板导槽|PCB 板导槽

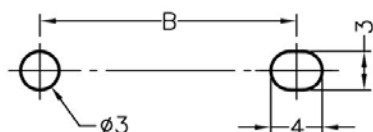
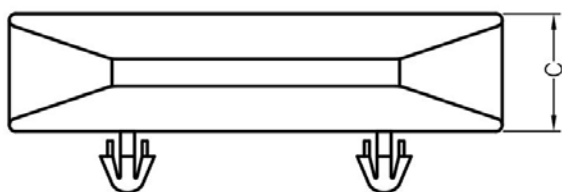
PART NO: PCCG054

- ◆ MATERIAL: NYLON 66(UL)
- ◆ FLAME CLASS: 94V-0, 94V-2
- ◆ COLOR: BLACK, NATURAL, WHITE
- ◆ UNIT: mm

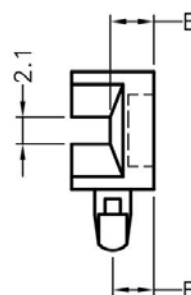
用途: 固定 PC 板|PCB 板于机壳上, 安装方便, 免螺丝。

所有尺寸量测皆不含进胶口, 胶口凸出 0.3mm 之内

PCCG054 结构图



MOUNTING HOLES
T=P.C.B THICKNESS



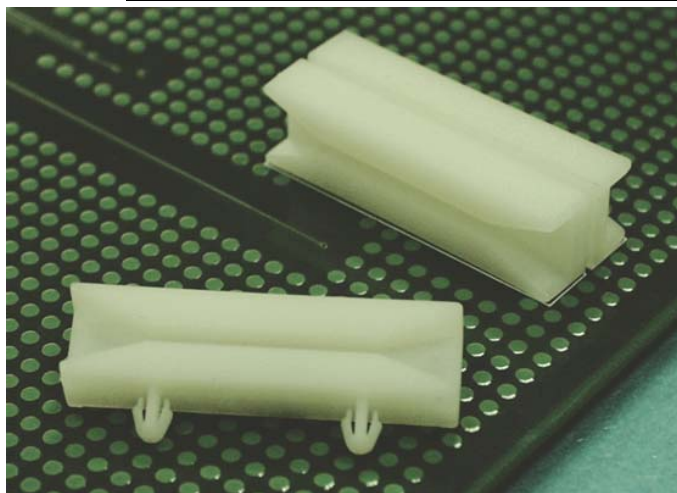
PART NO	A	B	C	D	E	F	T	PACKAGE
PCCG054	81.0	60.0	8.0	6.0	3.0	3.0	2.5	250

(规格 / 尺寸) 代码说明:

T : 板厚

南京诺金电气有限公司

Nanjing Nowking Electric Co., Ltd



产品名称: PC 板导槽|PCB 板导槽

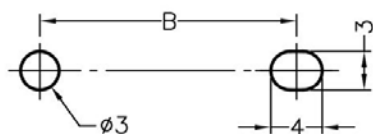
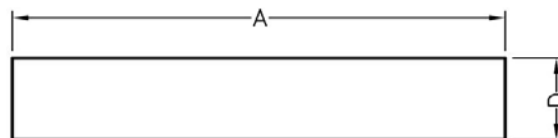
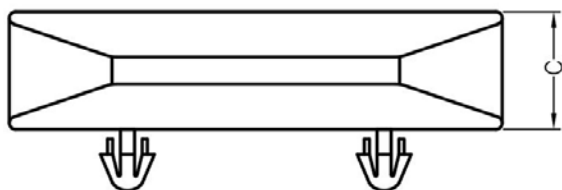
PART NO: PCCG055

- ◆ MATERIAL: NYLON 66(UL)
- ◆ FLAME CLASS: 94V-0, 94V-2
- ◆ COLOR: BLACK, NATURAL, WHITE
- ◆ UNIT: mm

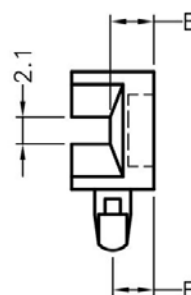
用途: 固定 PC 板|PCB 板于机壳上, 安装方便, 免螺丝。

所有尺寸量测皆不含进胶口, 胶口凸出 0.3mm 之内

PCCG055 结构图



MOUNTING HOLES
T=P.C.B THICKNESS



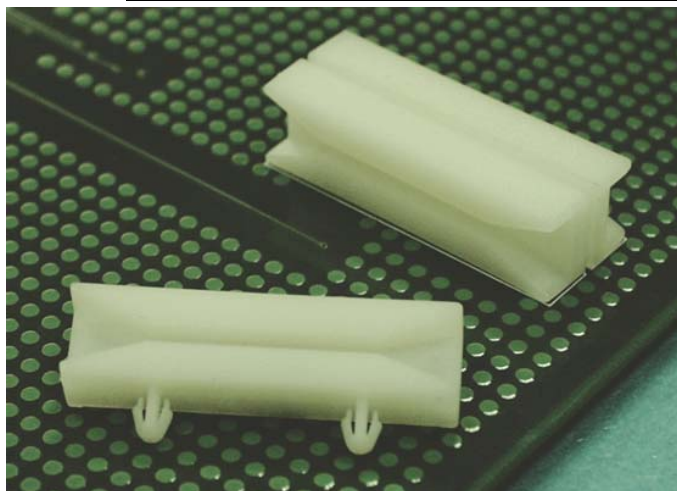
	PART NO	A	B	C	D	E	F	T	PACKAGE
	PCCG055	91.5	71.0	8.0	6.0	3.0	3.0	1.6~1.8	250

(规格 / 尺寸) 代码说明:

T : 板厚

南京诺金电气有限公司

Nanjing Nowking Electric Co., Ltd



产品名称: PC 板导槽|PCB 板导槽

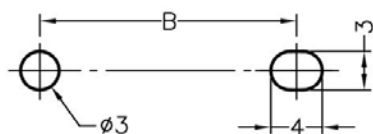
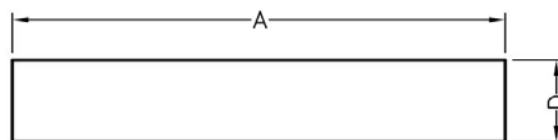
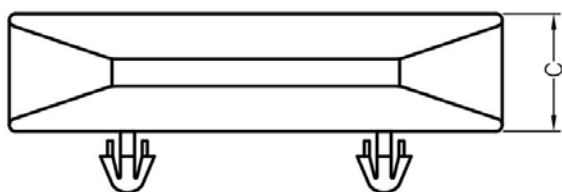
PART NO: PCCG056

- ◆ MATERIAL: NYLON 66(UL)
- ◆ FLAME CLASS: 94V-0, 94V-2
- ◆ COLOR: BLACK, NATURAL, WHITE
- ◆ UNIT: mm

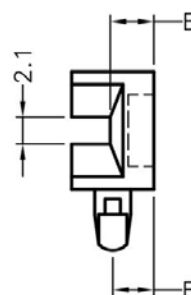
用途: 固定 PC 板|PCB 板于机壳上, 安装方便, 免螺丝。

所有尺寸量测皆不含进胶口, 胶口凸出 0.3mm 之内

PCCG056 结构图



MOUNTING HOLES
T=P.C.B THICKNESS



	PART NO	A	B	C	D	E	F	T	PACKAGE
	PCCG056	91.5	71.0	8.0	6.0	3.0	3.0	1.8~2.1	250

(规格 / 尺寸) 代码说明:

T : 板厚

南京诺金电气有限公司

Nanjing Nowking Electric Co., Ltd



产品名称: PC 板导槽|PCB 板导槽

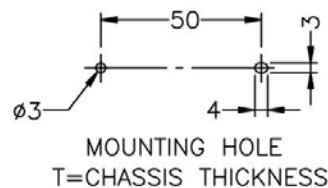
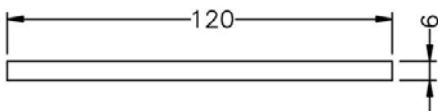
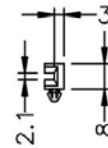
PART NO: PCCG057

- ◆ MATERIAL: NYLON 66(UL)
- ◆ FLAME CLASS: 94V-0, 94V-2
- ◆ COLOR: BLACK, NATURAL, WHITE
- ◆ UNIT: mm

用途: 固定 PC 板|PCB 板于机壳上, 安装方便, 免螺丝。

所有尺寸量测皆不含进胶口, 胶口凸出 0.3mm 之内

PCCG057 结构图



PART NO	T	PACKAGE
PCCG057	1.6~1.8	200

(规格 / 尺寸) 代码说明:

T : 板厚

南京诺金电气有限公司

Nanjing Nowking Electric Co., Ltd



产品名称: PC 板导槽|PCB 板导槽

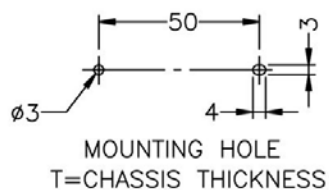
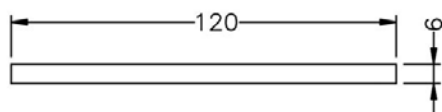
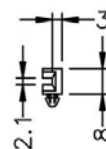
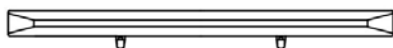
PART NO: PCCG058

- ◆ MATERIAL: NYLON 66(UL)
- ◆ FLAME CLASS: 94V-0, 94V-2
- ◆ COLOR: BLACK, NATURAL, WHITE
- ◆ UNIT: mm

用途: 固定 PC 板|PCB 板于机壳上, 安装方便, 免螺丝。

所有尺寸量测皆不含进胶口, 胶口凸出 0.3mm 之内

PCCG058 结构图



PART NO	T	PACKAGE
PCCG058	1.0	200

(规格 / 尺寸) 代码说明:

T : 板厚

南京诺金电气有限公司

Nanjing Nowking Electric Co., Ltd



产品名称: PC 板导槽|PCB 板导槽

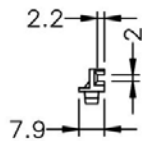
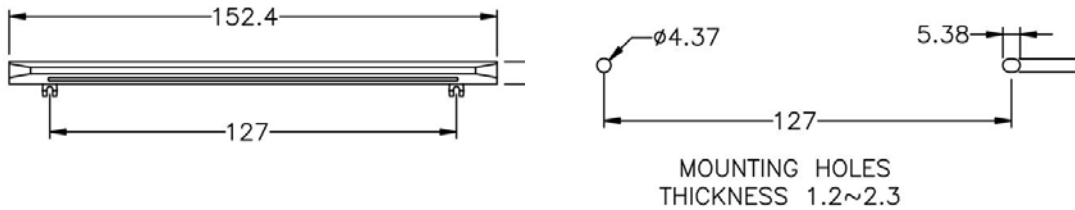
PART NO: PCCG059

- ◆ MATERIAL: NYLON 66(UL)
- ◆ FLAME CLASS: 94V-0, 94V-2
- ◆ COLOR: BLACK, NATURAL
- ◆ UNIT: mm

用途: 固定 PC 板|PCB 板于机壳上, 安装方便, 免螺丝。

所有尺寸量测皆不含进胶口, 胶口凸出 0.3mm 之内

PCCG059 结构图



	PART NO	PACKAGE
	PCCG059	250

南京诺金电气有限公司

Nanjing Nowking Electric Co., Ltd



产品名称: PC 板导槽|PCB 板导槽

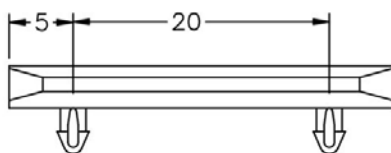
PART NO: PCCG060

- ◆ MATERIAL: NYLON 66(UL)
- ◆ FLAME CLASS: 94V-0,94V-2
- ◆ COLOR: BLACK, NATURAL
- ◆ UNIT: mm

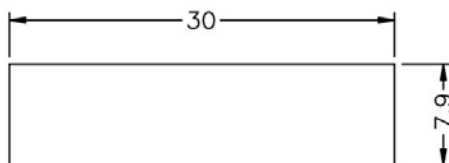
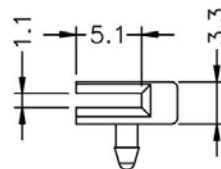
用途: 固定 PC 板|PCB 板于 PC 板上, 安装方便, 免螺丝。

所有尺寸量测皆不含进胶口, 胶口凸出 0.3mm 之内

PCCG060 结构图



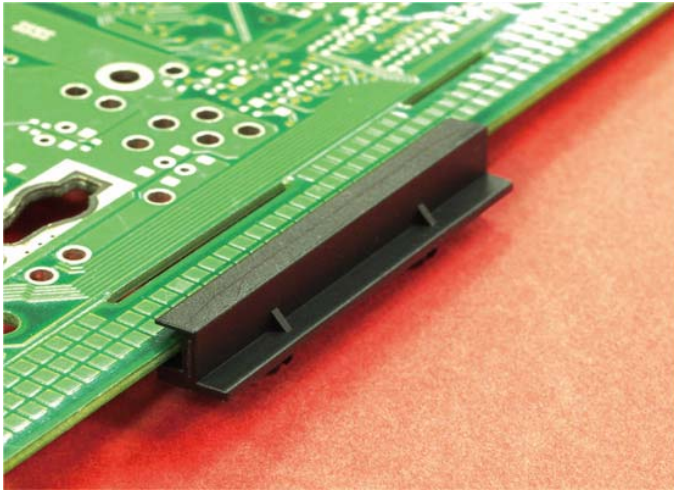
HOLE IN P.C.B: $\phi 2.0$
P.C.B THICKNESS: 1.6



	PART NO	PACKAGE
	PCCG060	500

南京诺金电气有限公司

Nanjing Nowking Electric Co., Ltd



产品名称: PC 板导槽|PCB 板导槽

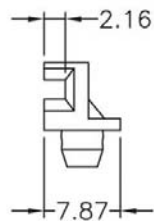
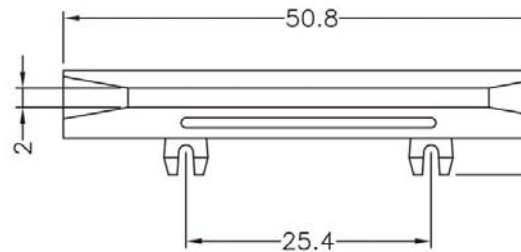
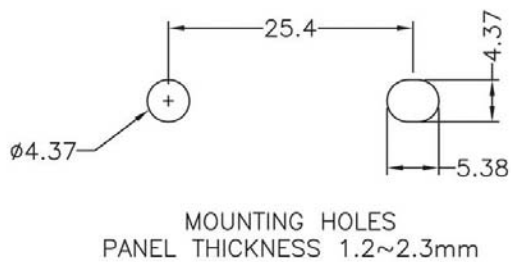
PART NO: PCCG061

- ◆ MATERIAL: NYLON 66(UL)
- ◆ FLAME CLASS: 94V-0, 94V-2
- ◆ COLOR: BLACK, NATURAL
- ◆ UNIT: mm

用途: 固定 PC 板|PCB 板于 PC 板上, 安装方便, 免螺丝。

可使用同等材质

PCCG061 结构图



	PART NO	PACKAGE
	PCCG061	1000

南京诺金电气有限公司

Nanjing Nowking Electric Co., Ltd



产品名称: PC 板导槽|PCB 板导槽

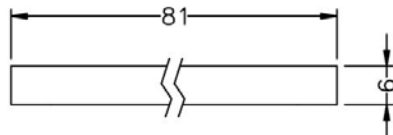
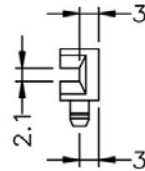
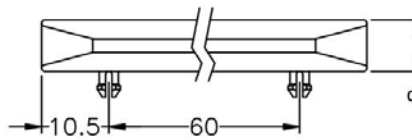
PART NO: PCCG062

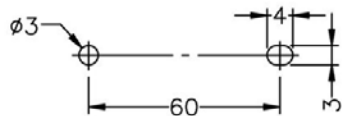
- ◆ MATERIAL: NYLON 66(UL)
- ◆ FLAME CLASS: 94V-0, 94V-2
- ◆ COLOR: BLACK, NATURAL
- ◆ UNIT: mm

用途: 固定 PC 板|PCB 板于 PC 板上, 安装方便, 免螺丝。

所有尺寸量测皆不含进胶口, 胶口凸出 0.3mm 之内

PCCG062 结构图





MOUNTING HOLES
P.C.B THICKNESS 1.8 mm

	PART NO	PACKAGE
	PCCG062	500



PCCG063 结构图

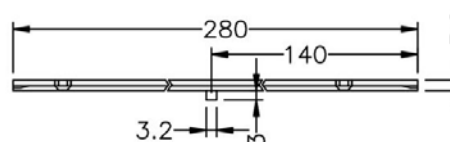
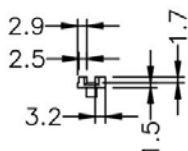
产品名称: PC 板导槽|PCB 板导槽

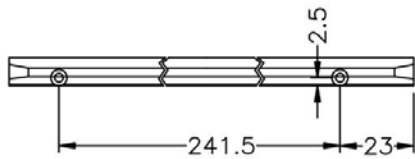
PART NO: PCCG063

- ◆ MATERIAL: NYLON 66(UL)
- ◆ FLAME CLASS: 94V-0, 94V-2
- ◆ COLOR: BLACK, NATURAL
- ◆ UNIT: mm

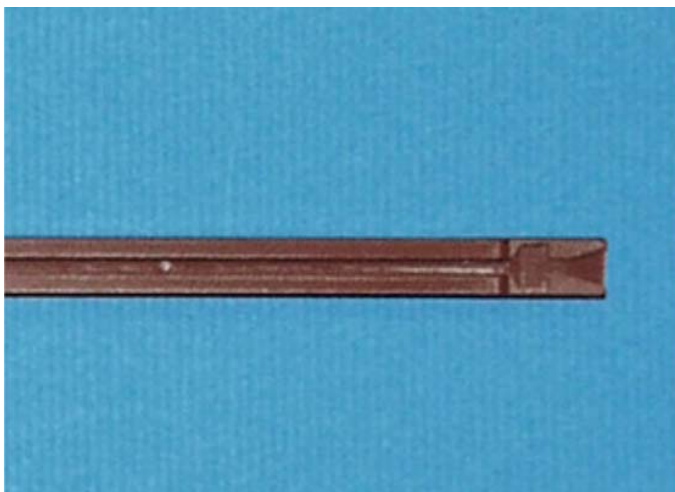
用途: 用螺丝锁于机板, 固定 PC 板|PCB 板于机壳上, 安装方便。

所有尺寸量测皆不含进胶口, 胶口凸出 0.3mm 之内





	PART NO	PACKAGE
	PCCG063	100



产品名称: PC 板导槽|PCB 板导槽

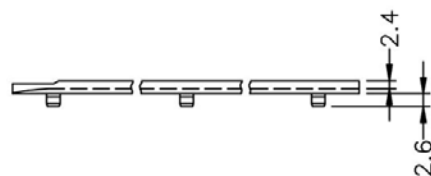
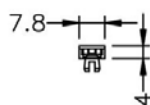
PART NO: PCCG064

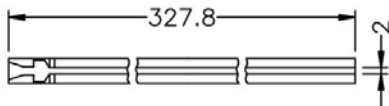
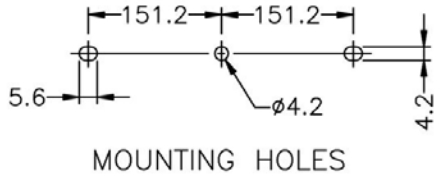
- ◆ MATERIAL: NYLON 66(UL)
- ◆ FLAME CLASS: 94V-0, 94V-2
- ◆ COLOR: RED
- ◆ UNIT: mm

用途: 固定 PC 板|PCB 板于机壳上, 安装方便, 免螺丝。

所有尺寸量测皆不含进胶口, 胶口凸出 0.3mm 之内

PCCG064 结构图





	PART NO	PACKAGE
	PCCG064	100



PCCG065 结构图

产品名称: PC 板导槽|PCB 板导槽

PART NO: PCCG065

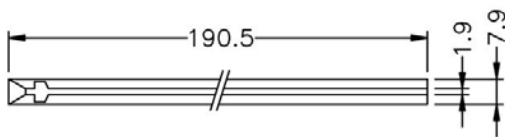
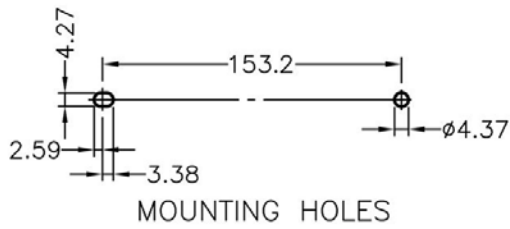
- ◆ MATERIAL: NYLON 66(UL)
- ◆ FLAME CLASS: 94V-0, 94V-2
- ◆ COLOR: BLACK, NATURAL
- ◆ UNIT: mm

用途: 固定 PC 板|PCB 板于 PC 板上, 安装方便, 免螺丝。

所有尺寸量测皆不含进胶口, 胶口凸出 0.3mm 之内

南京诺金电气有限公司

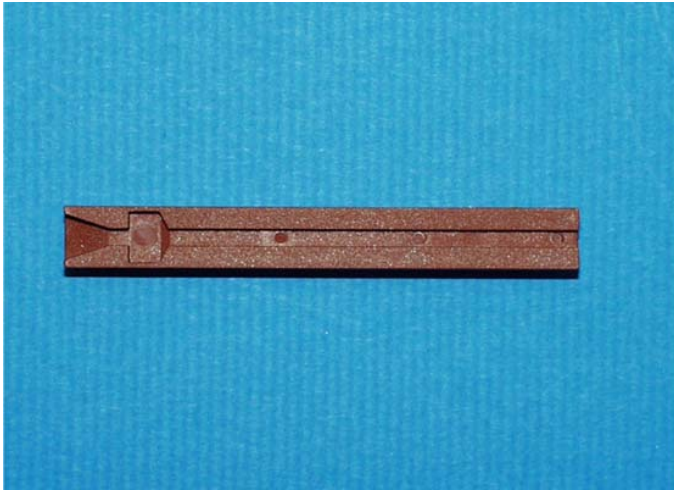
Nanjing Nowking Electric Co., Ltd



	PART NO	PACKAGE
	PCCG065	500

南京诺金电气有限公司

Nanjing Nowking Electric Co., Ltd



产品名称: PC 板导槽|PCB 板导槽

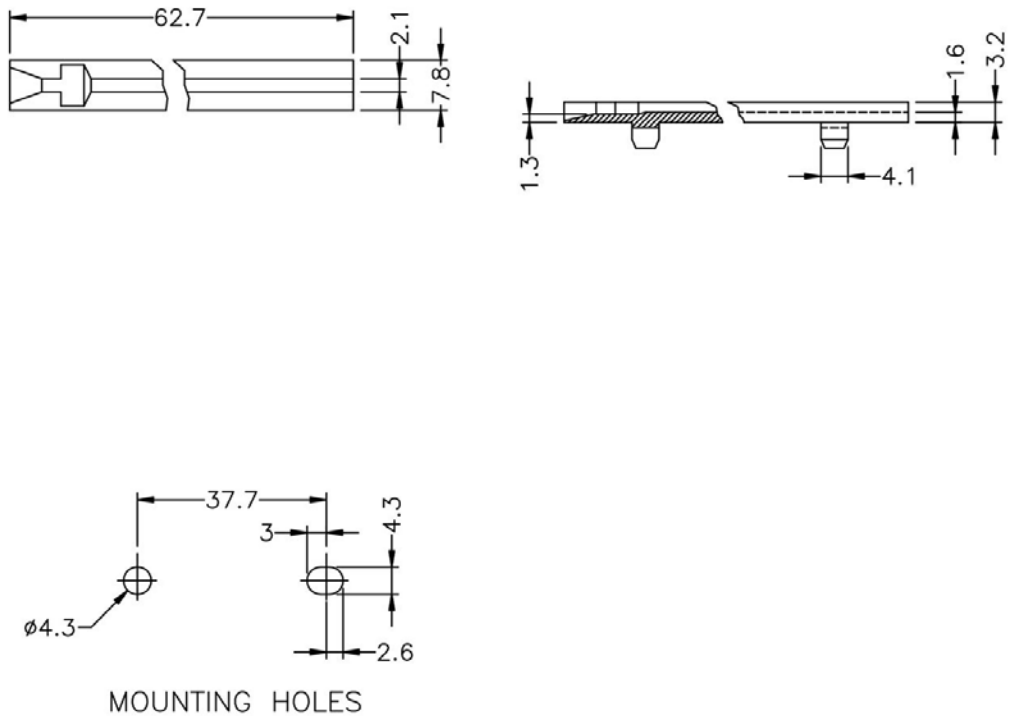
PART NO: PCCG066

- ◆ MATERIAL: NYLON 66(UL)
- ◆ FLAME CLASS: 94V-0, 94V-2
- ◆ COLOR: RED
- ◆ UNIT: mm

用途: 固定 PC 板|PCB 板于机壳上, 安装方便, 免螺丝。

所有尺寸量测皆不含进胶口, 胶口凸出 0.3mm 之内

PCCG066 结构图





	PART NO	PACKAGE
	PCCG066	500



产品名称: PC 板导槽|PCB 板导槽

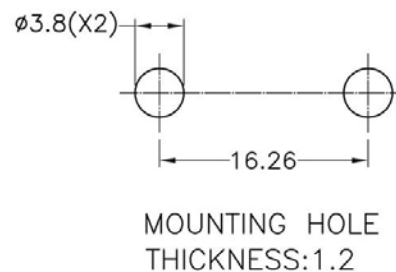
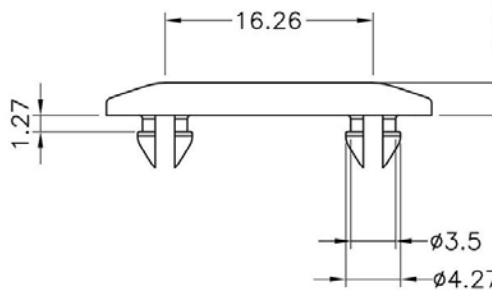
PART NO: PCCG067

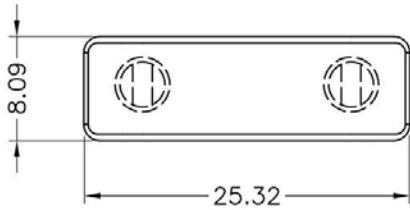
- ◆ MATERIAL: NYLON 66(UL)
- ◆ FLAME CLASS: 94V-0,94V-2
- ◆ COLOR: BLACK,NATURAL
- ◆ UNIT:mm

用途: 固定 PC 板|PCB 板于机壳上, 安装方便, 免螺丝。

所有尺寸量测皆不含进胶口, 胶口凸出 0.3mm 之内

PCCG067 结构图





	PART NO	PACKAGE
	PCCG067	500



产品名称: PC 板导槽|PCB 板导槽

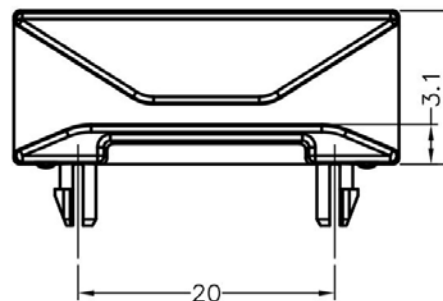
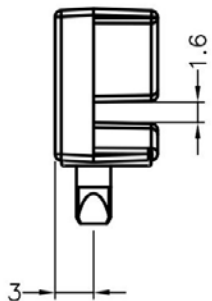
PART NO: PCCG068

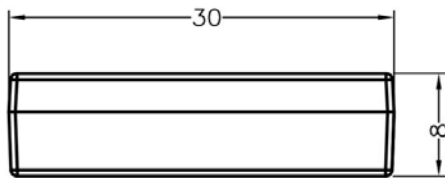
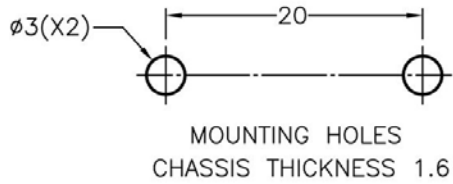
- ◆ MATERIAL: ABS(UL)
- ◆ FLAME CLASS: 94V-0, 94HB
- ◆ COLOR: BLACK
- ◆ UNIT: mm

用途: 固定 PC 板|PCB 板于机壳上, 安装方便, 免螺丝。

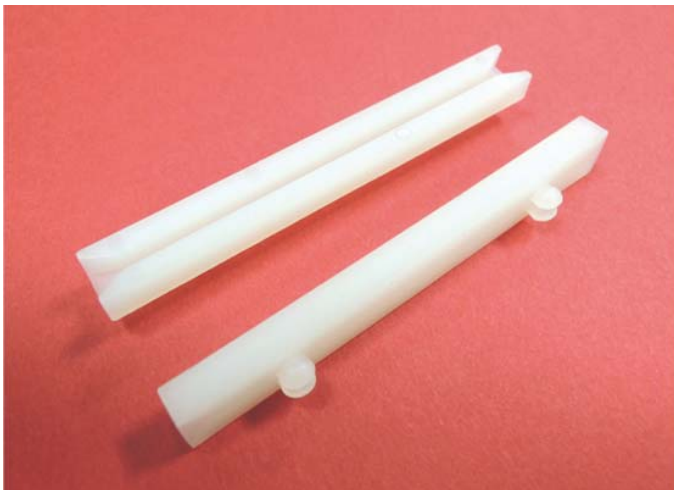
所有尺寸量测皆不含进胶口, 胶口凸出 0.3mm 之内

PCCG068 结构图





	PART NO	PACKAGE
	PCCG068	500



PCCG069 结构图

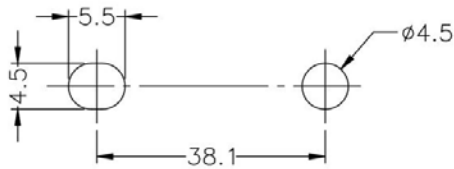
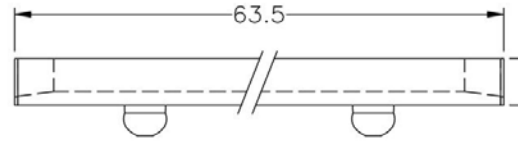
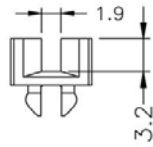
产品名称: PC 板导槽|PCB 板导槽

PART NO: PCCG069

- ◆ MATERIAL: NYLON 66(UL)
- ◆ FLAME CLASS: 94V-0, 94V-2
- ◆ COLOR: BLACK, NATURAL
- ◆ UNIT: mm

用途: 固定 PC 板|PCB 板于机壳上, 安装方便, 免螺丝。

所有尺寸量测皆不含进胶口, 胶口凸出 0.3mm 之内



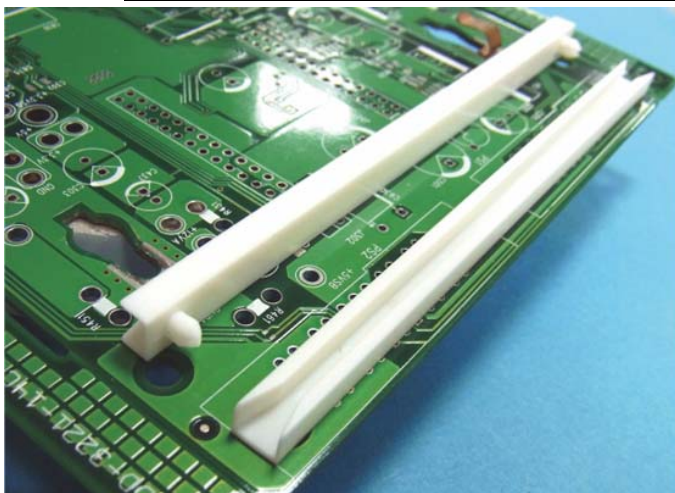
MOUNTING HOLES
CHASSIS THICKNESS:0.8mm



	PART NO	PACKAGE
	PCCG069	500

南京诺金电气有限公司

Nanjing Nowking Electric Co., Ltd



产品名称: PC 板导槽|PCB 板导槽

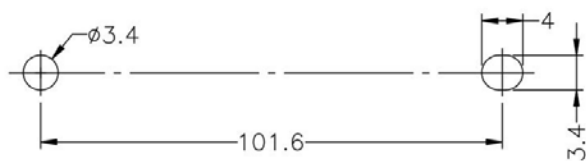
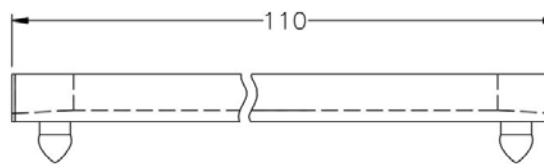
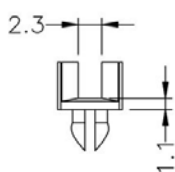
PART NO: PCCG070

- ◆ MATERIAL: NYLON 66(UL)
- ◆ FLAME CLASS: 94V-0, 94V-2
- ◆ COLOR: BLACK, NATURAL
- ◆ UNIT: mm

用途: 固定 PC 板|PCB 板于 PC 板上, 安装方便, 免螺丝。

所有尺寸量测皆不含进胶口, 胶口凸出 0.3mm 之内

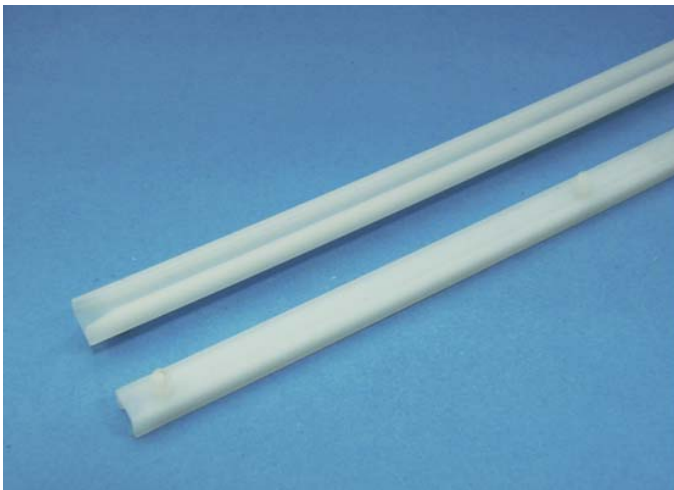
PCCG070 结构图



MOUNTING HOLES
CHASSIS THICKNESS: 0.8~1.2



	PART NO	PACKAGE
	PCCG070	100



产品名称: PC 板导槽|PCB 板导槽

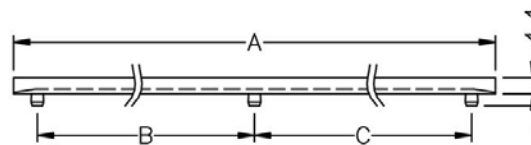
PART NO: PCCG071

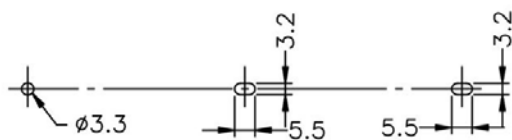
- ◆ MATERIAL: NYLON 66(UL)
- ◆ FLAME CLASS: 94V-0, 94V-2
- ◆ COLOR: BLACK, NATURAL
- ◆ UNIT: mm

用途: 固定 PC 板|PCB 板于 PC 板上, 安装方便, 免螺丝。

所有尺寸量测皆不含进胶口, 胶口凸出 0.3mm 之内

PCCG071 结构图

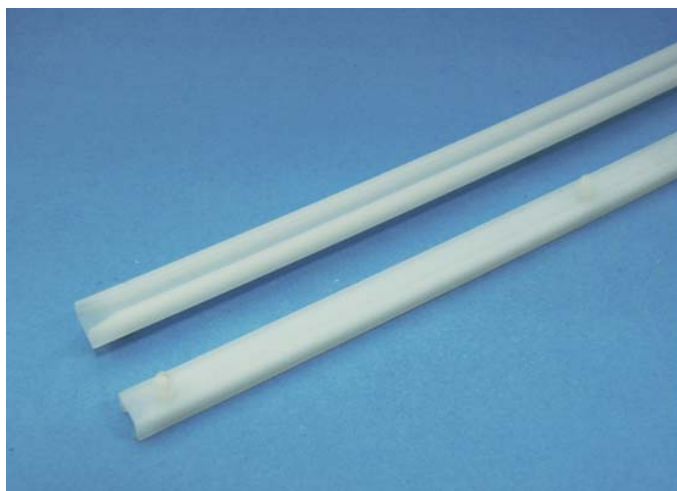




MOUNTING HOLES



	PART NO	A	B	C	PACKAGE
	PCCG071	178.5	83.0	83.0	200



PCCG072 结构图

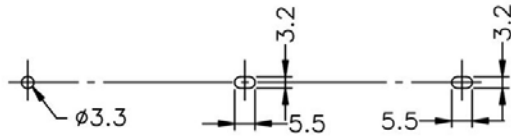
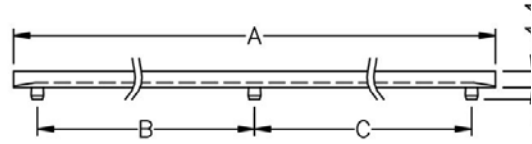
产品名称: PC 板导槽|PCB 板导槽

PART NO: PCCG072

- ◆ MATERIAL: NYLON 66(UL)
- ◆ FLAME CLASS: 94V-0, 94V-2
- ◆ COLOR: BLACK, NATURAL
- ◆ UNIT: mm

用途: 固定 PC 板|PCB 板于 PC 板上, 安装方便, 免螺丝。

所有尺寸量测皆不含进胶口, 胶口凸出 0.3mm 之内



MOUNTING HOLES



	PART NO	A	B	C	PACKAGE
	PCCG072	217.0	102.0	102.0	200

南京诺金电气有限公司

Nanjing Nowking Electric Co., Ltd



产品名称: PC 板导槽|PCB 板导槽

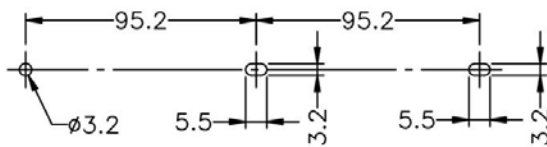
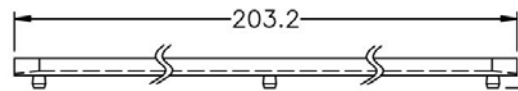
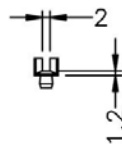
PART NO: PCCG073

- ◆ MATERIAL: NYLON 66(UL)
- ◆ FLAME CLASS: 94V-0, 94V-2
- ◆ COLOR: BLACK, NATURAL
- ◆ UNIT: mm

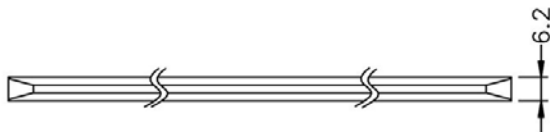
用途: 固定 PC 板|PCB 板于 PC 板上, 安装方便, 免螺丝。

所有尺寸量测皆不含进胶口, 胶口凸出 0.3mm 之内

PCCG073 结构图



MOUNTING HOLES
CHASSIS THICKNESS 1.2~2.0mm



	PART NO	PACKAGE
	PCCG073	100



PCCG074 结构图

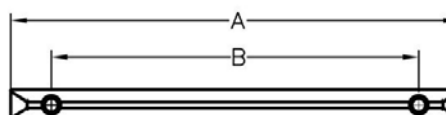
产品名称: PC 板导槽|PCB 板导槽

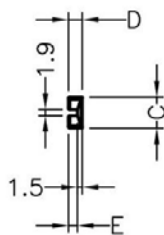
PART NO: PCCG074

- ◆ MATERIAL: NYLON 66(UL)
- ◆ FLAME CLASS: 94V-0, 94V-2
- ◆ COLOR: BLACK, NATURAL
- ◆ UNIT: mm

用途: 固定 PC 板|PCB 板于 PC 板上, 安装方便, 免螺丝。

所有尺寸量测皆不含进胶口, 胶口凸出 0.3mm 之内





PART NO	A	B	C	D	E	PACKAGE
PCCG074	139.8	114.5	9.7	4.3	2.8	250



PCCG075 结构图

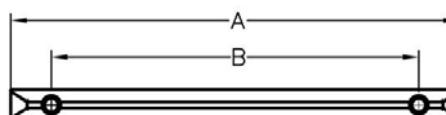
产品名称: PC 板导槽|PCB 板导槽

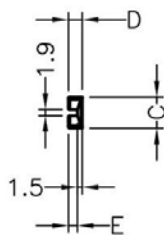
PART NO: PCCG075

- ◆ MATERIAL: NYLON 66(UL)
- ◆ FLAME CLASS: 94V-0, 94V-2
- ◆ COLOR: BLACK, NATURAL
- ◆ UNIT: mm

用途: 固定 PC 板|PCB 板于 PC 板上, 安装方便, 免螺丝。

所有尺寸量测皆不含进胶口, 胶口凸出 0.3mm 之内





PART NO	A	B	C	D	E	PACKAGE
PCCG075	119.0	94.5	9.8	4.5	3.0	250



PCCG076 结构图

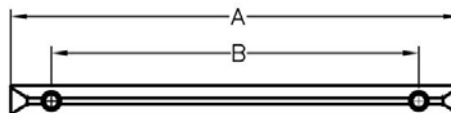
产品名称: PC 板导槽|PCB 板导槽

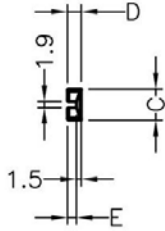
PART NO: PCCG076

- ◆ MATERIAL: NYLON 66(UL)
- ◆ FLAME CLASS: 94V-0,94V-2
- ◆ COLOR: BLACK,NATURAL
- ◆ UNIT:mm

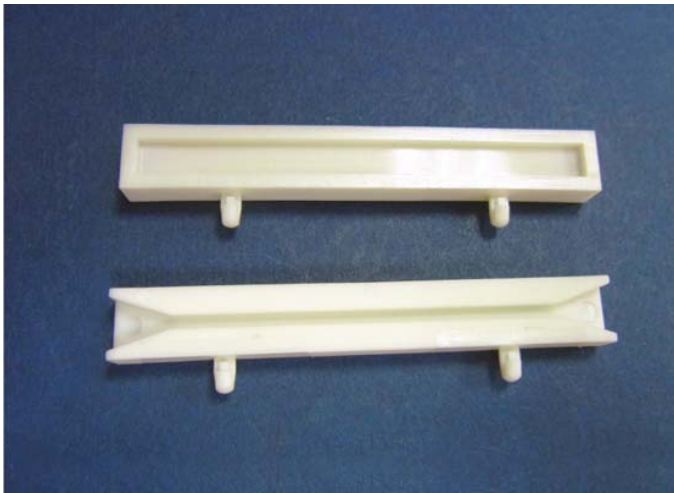
用途: 固定 PC 板|PCB 板于 PC 板上, 安装方便, 免螺丝。

所有尺寸量测皆不含进胶口,胶口凸出 0.3mm 之内





PART NO	A	B	C	D	E	PACKAGE
PCCG076	158.7	135.0	9.7	4.3	2.8	250



产品名称: PC 板导槽|PCB 板导槽

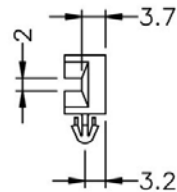
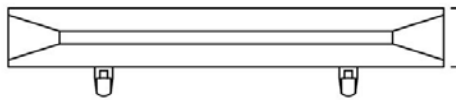
PART NO: PCCG077

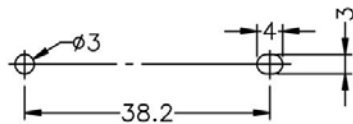
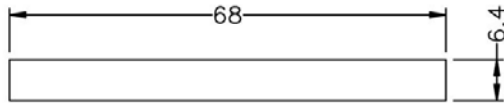
- ◆ MATERIAL: NYLON 66(UL)
- ◆ FLAME CLASS: 94V-0, 94V-2
- ◆ COLOR: BLACK, NATURAL
- ◆ UNIT: mm

用途: 固定 PC 板|PCB 板于 PC 板上, 安装方便, 免螺丝。

所有尺寸量测皆不含进胶口, 胶口凸出 0.3mm 之内

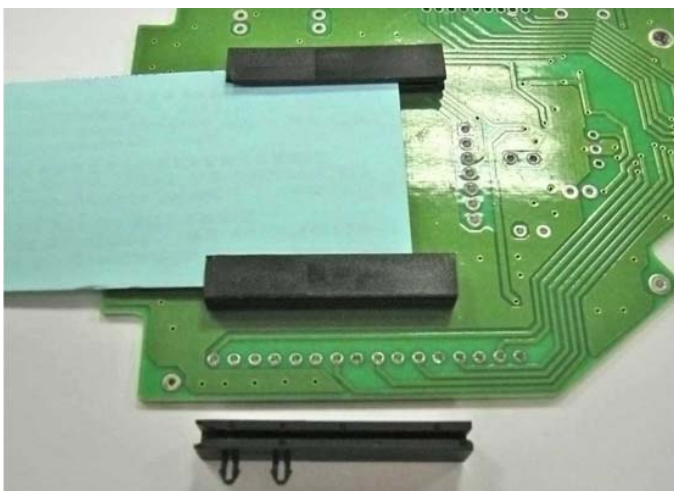
PCCG077 结构图





MOUNTING HOLES
THICKNESS 1.6

	PART NO	PACKAGE
	PCCG077	200



PCCG078 结构图

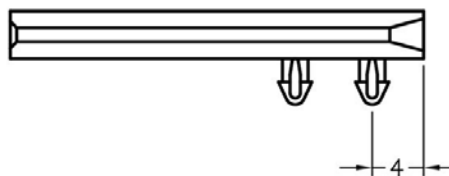
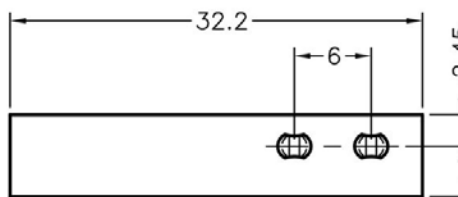
产品名称: PC 板导槽|PCB 板导槽

PART NO: PCCG078

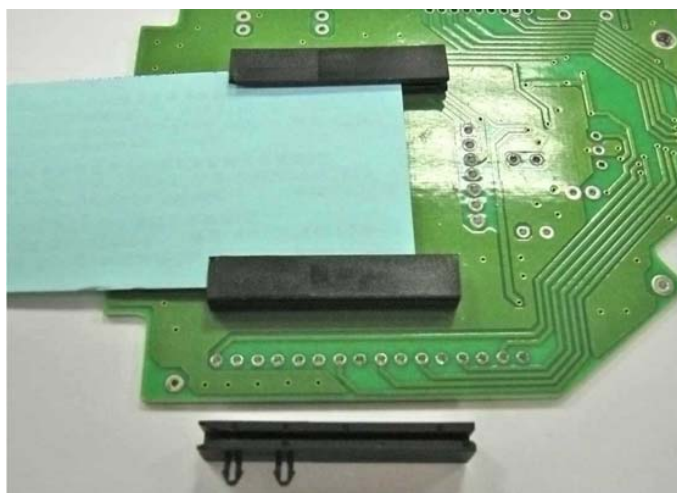
- ◆ MATERIAL: NYLON 66(UL)
- ◆ FLAME CLASS: 94V-0, 94V-2
- ◆ COLOR: BLACK, NATURAL
- ◆ UNIT: mm

用途: 固定 IC 卡于 PC 板上, 安装方便, 免螺丝。

所有尺寸量测皆不含进胶口, 胶口凸出 0.3mm 之内



	PART NO	PACKAGE
	PCCG078	500



PCCG079 结构图

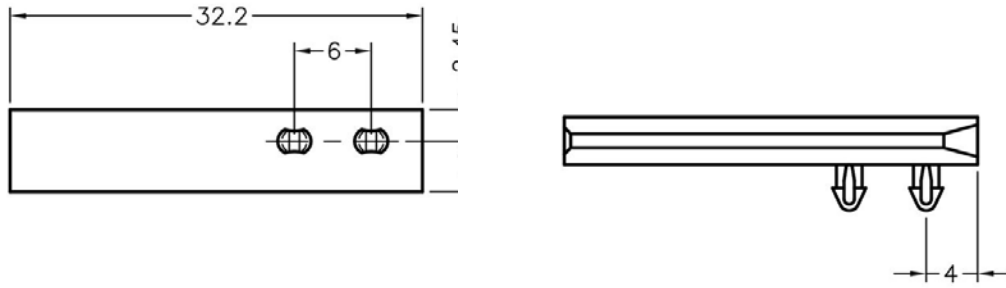
产品名称: PC 板导槽|PCB 板导槽

PART NO: PCCG079

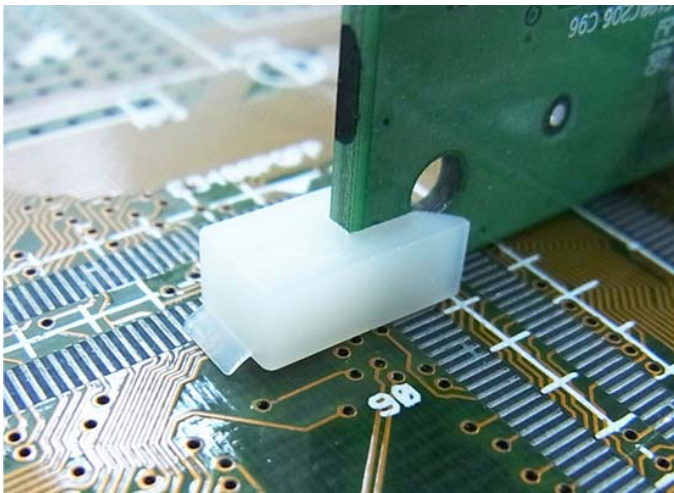
- ◆ MATERIAL: NYLON 66(UL)
- ◆ FLAME CLASS: 94V-0,94V-2
- ◆ COLOR: BLACK, NATURAL
- ◆ UNIT: mm

用途: 固定 IC 卡于 PC 板上, 安装方便, 免螺丝。

所有尺寸量测皆不含进胶口, 胶口凸出 0.3mm 之内



	PART NO	PACKAGE
	PCCG079	500



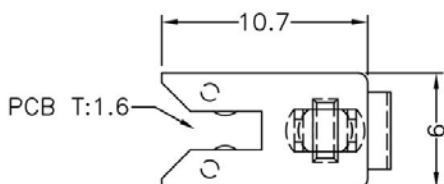
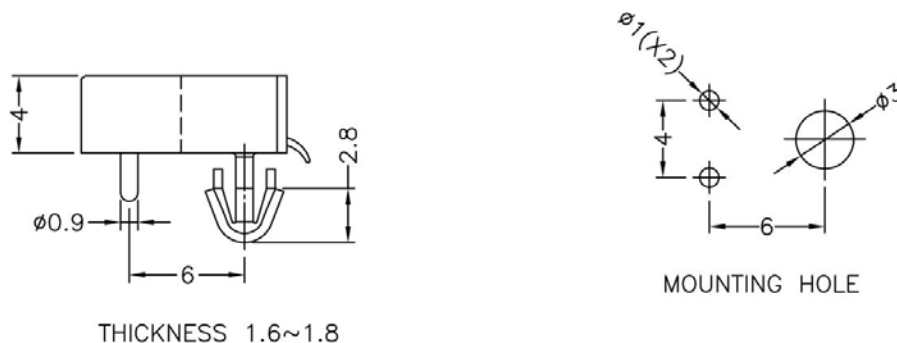
PCCG080 结构图

产品名称: PC 板导槽|PCB 板导槽

PART NO: PCCG080

- ◆ MATERIAL: NYLON 66(UL)
- ◆ FLAME CLASS: 94V-0,94V-2
- ◆ COLOR: BLACK,NATURAL
- ◆ UNIT:mm

用途: 固定 PC 板于机板上, 成 90°不晃动。



	PART NO	PACKAGE
	PCCG080	1000



PCCG081 结构图

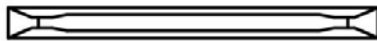
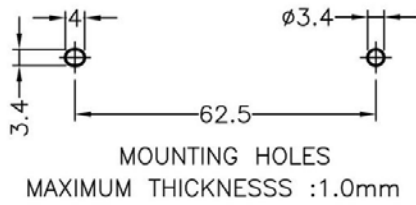
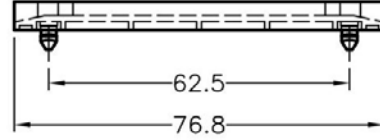
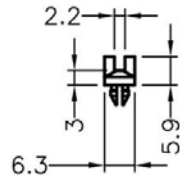
产品名称: PC 板导槽|PCB 板导槽

PART NO: PCCG081

- ◆ MATERIAL: NYLON 66(UL)
- ◆ FLAME CLASS: 94V-0, 94V-2
- ◆ COLOR: BLACK, NATURAL
- ◆ UNIT: mm

用途: 固定 PC 板、PCB 板于机壳上, 安装方便, 免螺丝。

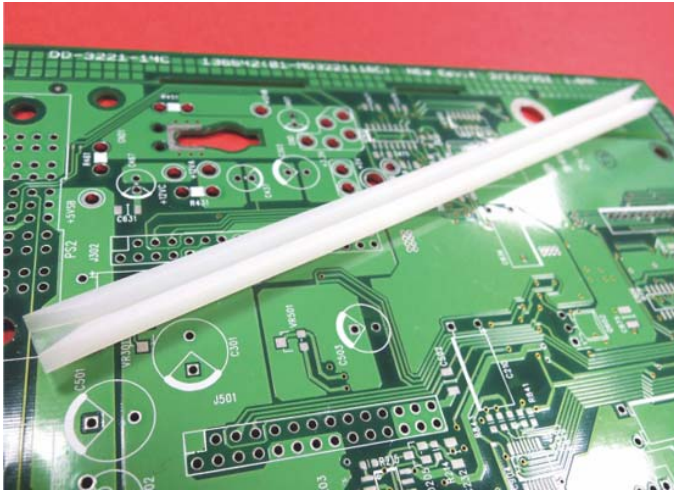
所有尺寸量测皆不含进胶口, 胶口凸出 0.3mm 之内



	PART NO	PACKAGE
	PCCG081	500

南京诺金电气有限公司

Nanjing Nowking Electric Co., Ltd



产品名称: PC 板导槽|PCB 板导槽

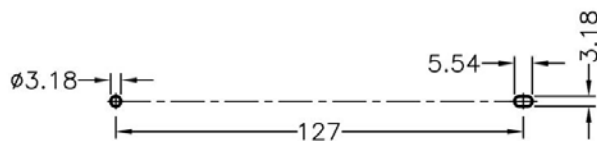
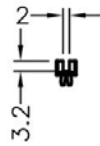
PART NO: PCCG082

- ◆ MATERIAL: NYLON 66(UL)
- ◆ FLAME CLASS: 94V-0, 94V-2
- ◆ COLOR: BLACK, NATURAL
- ◆ UNIT: mm

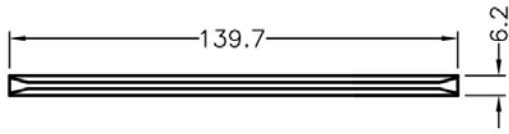
用途: 固定 PC 板、PCB 板于机壳上, 安装方便, 免螺丝。

所有尺寸量测皆不含进胶口, 胶口凸出 0.3mm 之内

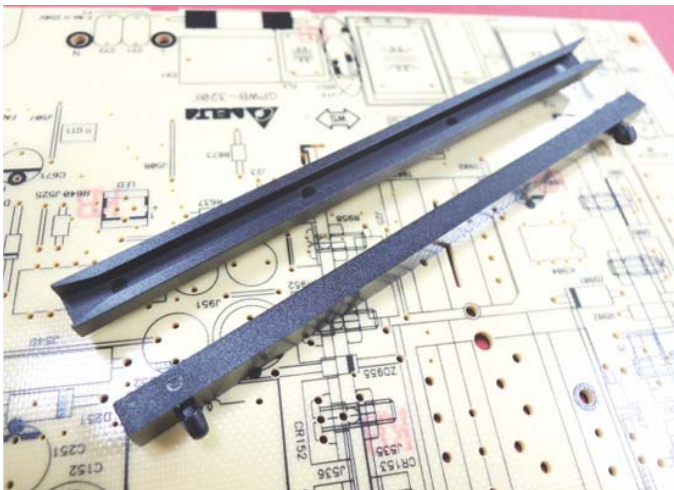
PCCG082 结构图



MOUNTING HOLES
THICKNESS : 0.8~2.0



	PART NO	PACKAGE
	PCCG082	250



产品名称: PC 板导槽|PCB 板导槽

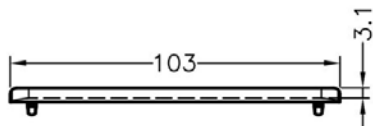
PART NO: PCCG083

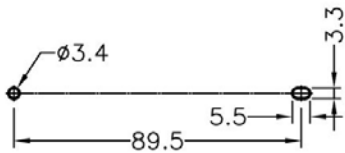
- ◆ MATERIAL: NYLON 66(UL)
- ◆ FLAME CLASS: 94V-0, 94V-2
- ◆ COLOR: BLACK, NATURAL
- ◆ UNIT: mm

用途: 固定 PC 板、PCB 板于机壳上, 安装方便, 免螺丝。

所有尺寸量测皆不含进胶口, 胶口凸出 0.3mm 之内

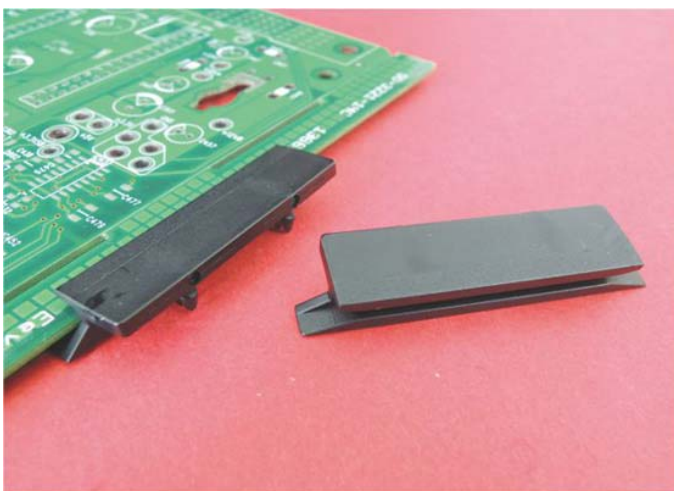
PCCG083 结构图





RECOMMEND MOUNTING HOLE
RECOMMEND THICKNESS: 1.0mm

	PART NO	PACKAGE
	PCCG083	500



PCCG084 结构图

产品名称: PC 板导槽|PCB 板导槽

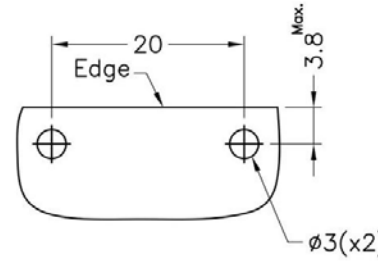
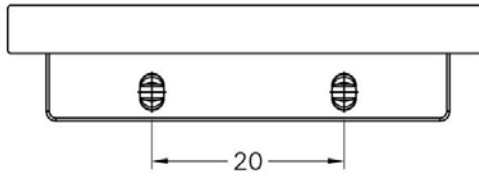
PART NO: PCCG084

- ◆ MATERIAL: NYLON 66(UL)
- ◆ FLAME CLASS: 94V-0, 94V-2
- ◆ COLOR: BLACK, NATURAL
- ◆ UNIT: mm

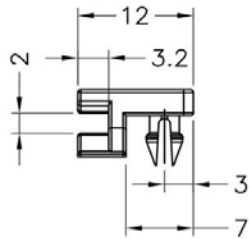
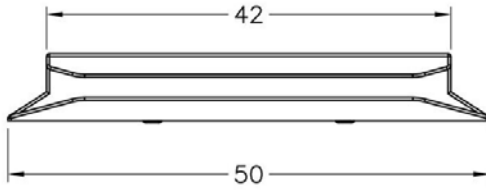
用途: 固定 PC 板、PCB 板于机壳上, 安装方便, 免螺丝。

南京诺金电气有限公司

Nanjing Nowking Electric Co., Ltd



RECOMMEND MOUNTING HOLE
RECOMMEND THICKNESS:1.6mm



	PART NO	PACKAGE
	PCCG084	500

南京诺金电气有限公司

Nanjing Nowking Electric Co., Ltd



产品名称: PC 板导槽|PCB 板导槽

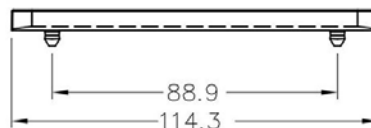
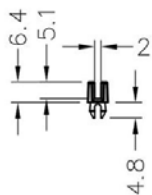
PART NO: PCCG085

- ◆ MATERIAL: NYLON 66(UL)
- ◆ FLAME CLASS: 94V-0, 94V-2
- ◆ COLOR: BLACK, NATURAL
- ◆ UNIT: mm

用途: 固定 PC 板、PCB 板于机壳上, 安装方便, 免螺丝。

可使用同等材质

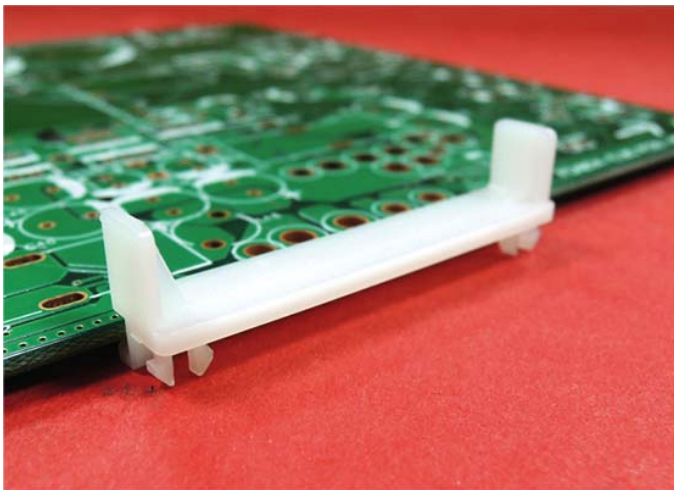
PCCG085 结构图



MOUNTING HOLE
CHASSIS THICKNESS 1.2~2.3



	PART NO	PACKAGE
	PCCG085	500



产品名称: PC 板导槽|PCB 板导槽

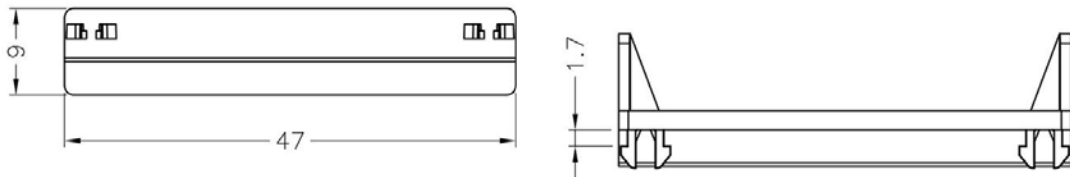
PART NO: PCCG086

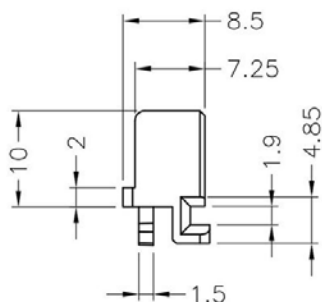
- ◆ MATERIAL: NYLON 66(UL)
- ◆ FLAME CLASS: 94V-0, 94V-2
- ◆ COLOR: BLACK, NATURAL
- ◆ UNIT: mm

用途: 固定 PC 板、PCB 板于机壳上, 安装方便, 免螺丝。

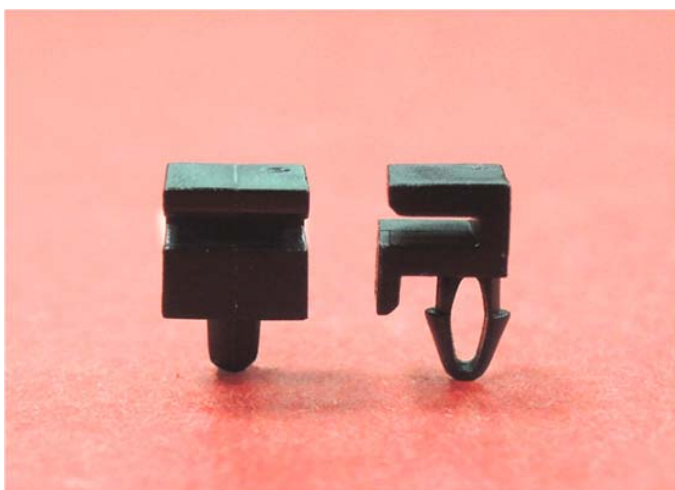
可使用同等材质

PCCG086 结构图





	PART NO	PACKAGE
	PCCG086	1000



产品名称: PC 板导槽|PCB 板导槽

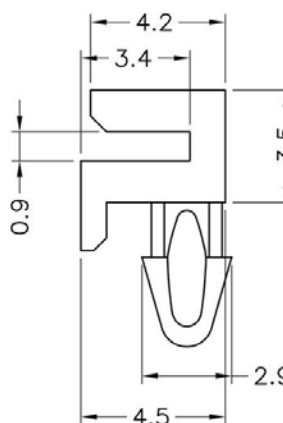
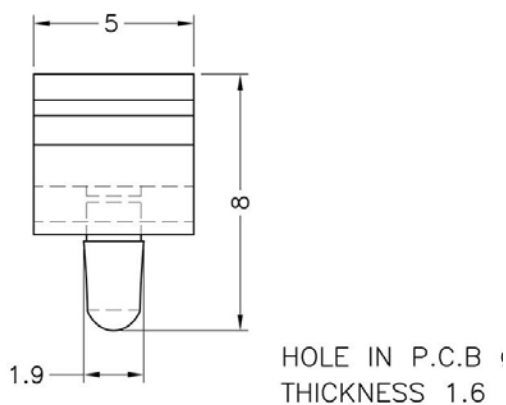
PART NO: PCCG087

- ◆ MATERIAL: NYLON 66(UL)
- ◆ FLAME CLASS: 94V-0, 94V-2
- ◆ COLOR: BLACK, NATURAL
- ◆ UNIT: mm

用途: 固定 PC 板、PCB 板于机壳上, 安装方便, 免螺丝。

可使用同等材质

PCCG087 结构图



南京诺金电气有限公司

Nanjing Nowking Electric Co., Ltd

	PART NO	PACKAGE
	PCCG087	1000



PCCG088 结构图

产品名称: PC 板导槽|PCB 板导槽

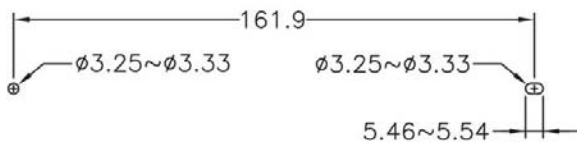
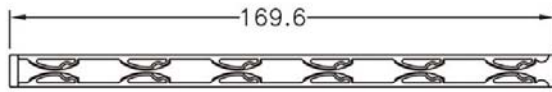
PART NO: PCCG088

- ◆ MATERIAL: PC(UL)
- ◆ FLAME CLASS: 94V-0
- ◆ COLOR:BLACK
- ◆ UNIT:mm

用途: 固定 PC 板、PCB 板于机壳上, 安装方便, 免螺丝。

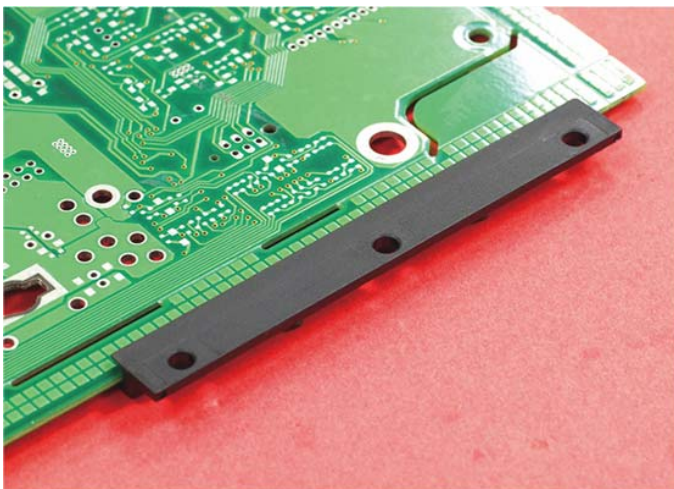
可使用同等材质





MOUNTING HOLES
CHASSIS THICKNESS 1.5~1.8mm

	PART NO	PACKAGE
	PCCG088	500



PCCG089 结构图

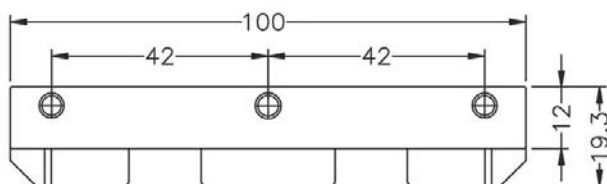
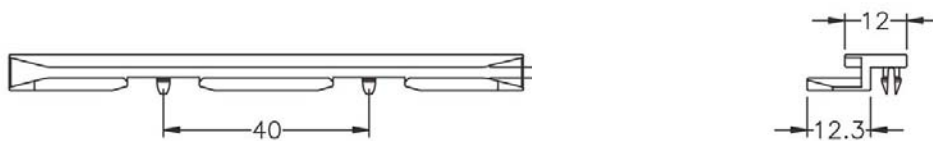
产品名称: PC 板导槽|PCB 板导槽

PART NO: PCCG089

- ◆ MATERIAL: NYLON 66(UL)
- ◆ FLAME CLASS: 94V-0,94V-2
- ◆ COLOR:BLACK, NATURAL
- ◆ UNIT:mm

用途: 固定 PC 板、PCB 板于机壳上, 安装方便, 免螺丝。

可使用同等材质; 内缩为正常现象。



	PART NO	PACKAGE
	PCCG089	1000



PCCG090 结构图

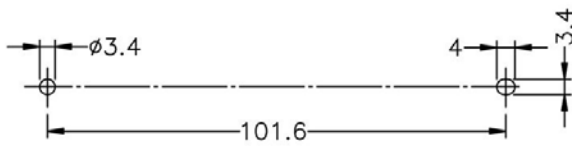
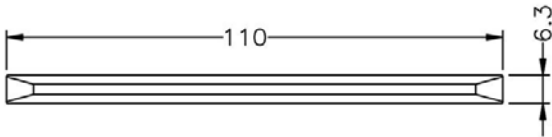
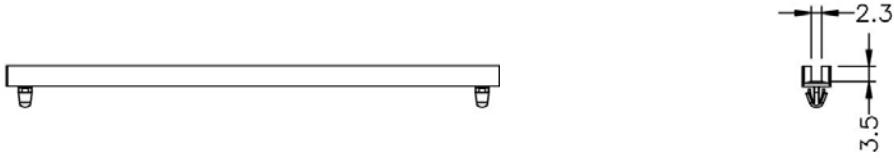
产品名称: PC 板导槽|PCB 板导槽

PART NO: PCCG090

- ◆ MATERIAL: NYLON 66(UL)
- ◆ FLAME CLASS: 94V-0,94V-2
- ◆ COLOR:BLACK, NATURAL
- ◆ UNIT:mm

用途: 固定 PC 板、PCB 板于机壳上, 安装方便, 免螺丝。

可使用同等材质。

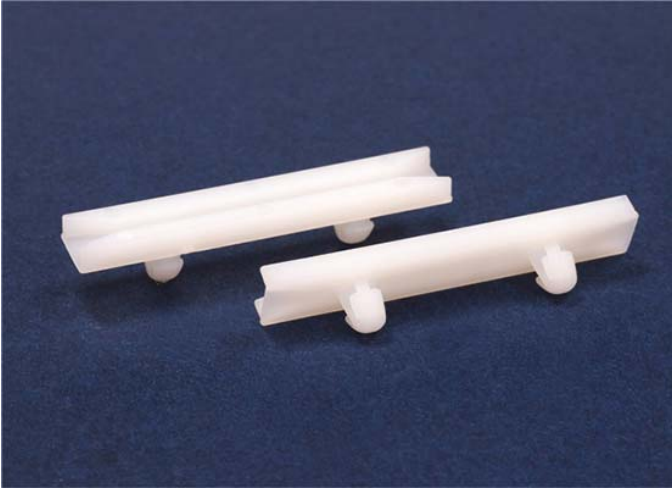


MOUNTING HOLES
THICKNESS 1.2

	PART NO	PACKAGE
	PCCG090	500

南京诺金电气有限公司

Nanjing Nowking Electric Co., Ltd



产品名称: PC 板导槽|PCB 板导槽

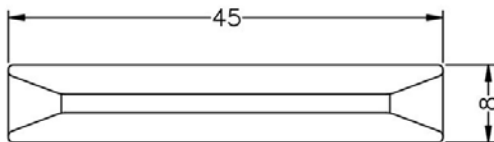
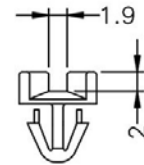
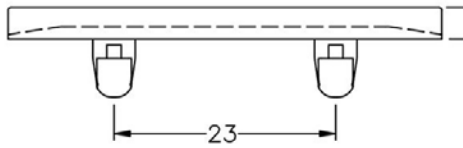
PART NO: PCCG091

- ◆ MATERIAL: NYLON 66(UL)
- ◆ FLAME CLASS: 94V-0,94V-2
- ◆ COLOR:BLACK, NATURAL
- ◆ UNIT:mm

用途: 固定 PC 板、PCB 板于机壳上, 安装方便, 免螺丝。

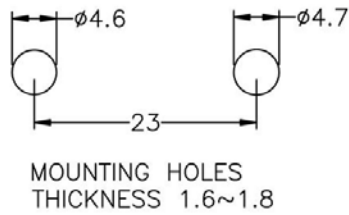
可使用同等材质。

PCCG091 结构图

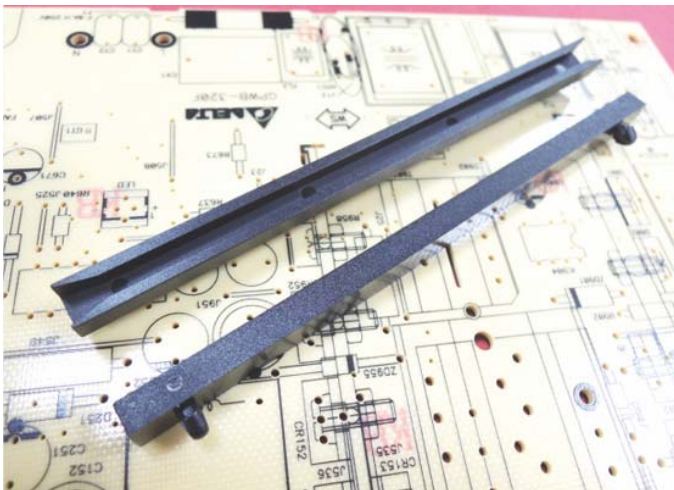


南京诺金电气有限公司

Nanjing Nowking Electric Co., Ltd



	PART NO	PACKAGE
	PCCG091	1000



产品名称: PC 板导槽|PCB 板导槽

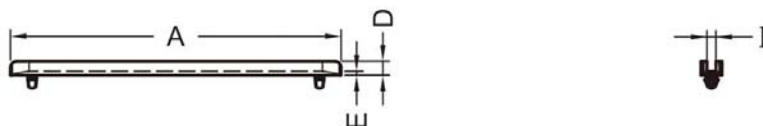
PART NO: PCCG092

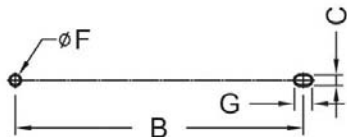
- ◆ MATERIAL: NYLON 66(UL)
- ◆ FLAME CLASS: 94V-0,94V-2
- ◆ COLOR:BLACK, NATURAL
- ◆ UNIT:mm

用途: 固定 PC 板、PCB 板于机壳上, 安装方便, 免螺丝。

可使用同等材质。

PCCG092 结构图





RECOMMEND MOUNTING HOLE
RECOMMEND THICKNESS: T

	PART NO	A	B	C	D	E	F	G	I	T	PACKAGE
	PCCG092	103.0	89.5	3.3	4.4	1.3	$\varnothing 3.4$	5.5	2.8	1.5	500



PCCG093 结构图

产品名称: PC 板导槽|PCB 板导槽

PART NO: PCCG093

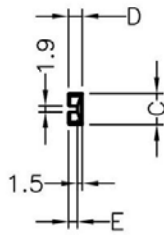
- ◆ MATERIAL: NYLON 66(UL)
- ◆ FLAME CLASS: 94V-0, 94V-2
- ◆ COLOR: BLACK, NATURAL
- ◆ UNIT: mm

用途: 固定 PC 板|PCB 板于 PC 板上, 安装方便, 免螺丝。

所有尺寸量测皆不含进胶口, 胶口凸出 0.3mm 之内

南京诺金电气有限公司

Nanjing Nowking Electric Co., Ltd



	PART NO	A	B	C	D	E	PACKAGE
	PCCG093	100.0	77.0	10.0	7.2	5.4	250