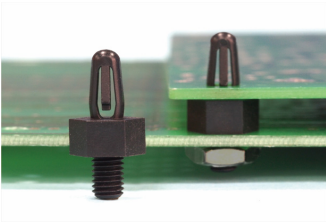
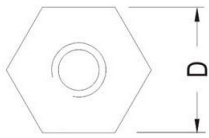


PC板间隔柱 SPACER SUPPORT

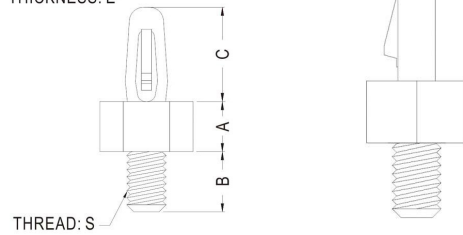


MATERIAL : NYLON 66(UL)
 FLAME CLASS : 94V-0,94V-2
 COLOR : BLACK,NATURAL
 UNIT: mm

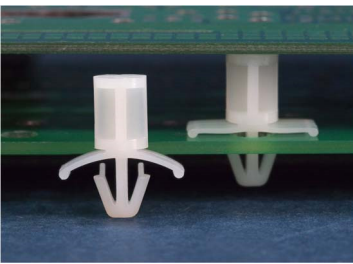
用途： PC板端直接压入固定，另一端可配合螺丝或攻牙。



P.C.B Ø4.0
 THICKNESS: E

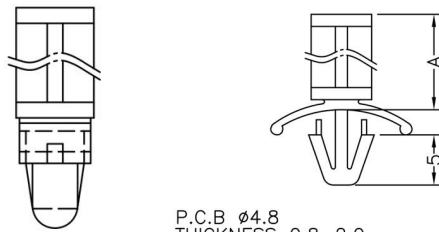


PART NO	A	B	C	D	E	PACKAGE
PCSS-203	5.0	6.0	9.4	8.0	2.0	1000
PCSS-1835	4.0	6.4	9.4	8.0	2.0	1000



MATERIAL : NYLON 66(UL)
 FLAME CLASS : 94V-0,94V-2
 COLOR : BLACK,NATURAL
 UNIT: mm

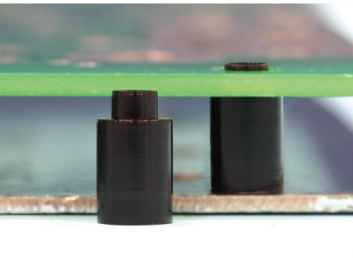
用途： 一端固定于机板上，另一端支撑PC板，避免下陷造成短路，PC板免钻孔



P.C.B Ø4.8
 THICKNESS 0.8~2.0

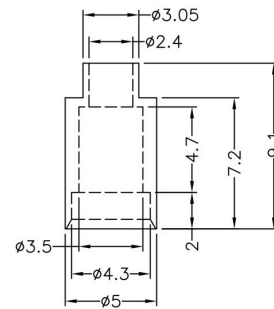
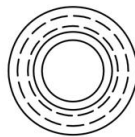
PART NO	A	PACKAGE
PCSS-216	3.5	1000
PCSS-217	4.8	1000
PCSS-218	6.0	1000
PCSS-219	6.4	1000
PCSS-220	7.9	1000
PCSS-221	9.5	1000
PCSS-222	11.1	1000
PCSS-223	12.7	1000
PCSS-224	15.9	1000
PCSS-225	19.1	1000
PCSS-226	22.2	1000
PCSS-227	24.0	1000
PCSS-228	25.4	1000
PCSS-229	27.5	1000
PCSS-230	28.6	500
PCSS-231	31.1	500
PCSS-232	31.7	500
PCSS-233	34.9	500

6

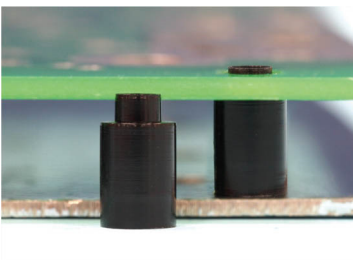


MATERIAL : POM (UL)
 FLAME CLASS : 94HB
 COLOR : BLACK,NATURAL
 UNIT: mm

用途： 做为PC板与机板之绝缘用

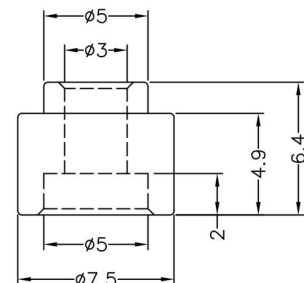
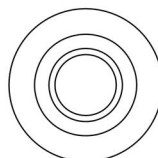


PART NO	PACKAGE
PCSS-234	1000



MATERIAL : ABS(UL)
 FLAME CLASS : 94HB
 COLOR : BLACK,NATURAL
 UNIT: mm

用途： 做为PC板与机板之绝缘用



PART NO	PACKAGE
PCSS-235	1000