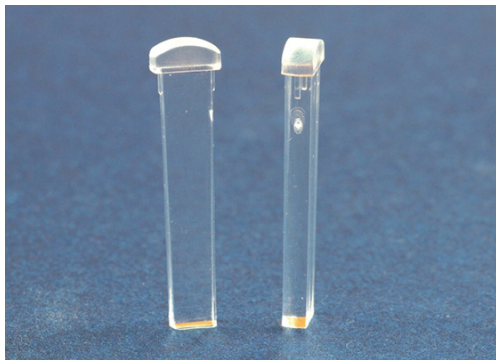


LED导光柱 LED PIPE



用途：使S.M.T LED导光于机壳面板上，使光度均匀、柔和。

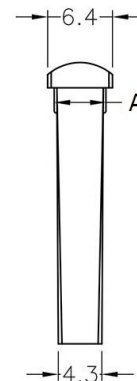
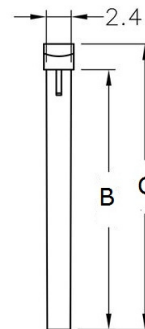
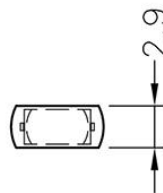
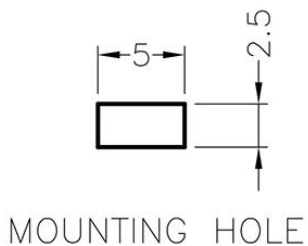
MATERIAL : PC(UL)

FLAME CLASS : 94V-0,94V-2

COLOR : TRANSPARENT

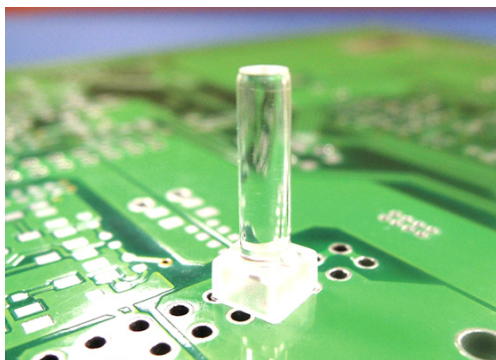
UNIT : mm

2



PART NO	A	B	C	PACKAGE
LEDLP-165	5.1	25.4	27.9	1000
LEDLP-260	5.15	17.0	19.5	1000

LED导光柱 LED PIPE



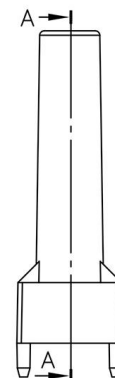
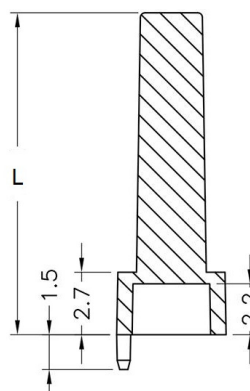
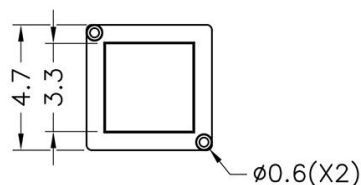
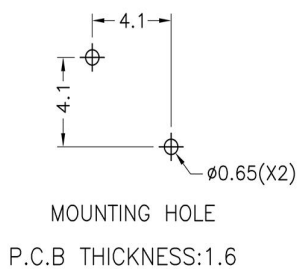
用途：使 LED 导光于机壳面板上，使光度均匀、柔和

MATERIAL : PC(UL)

FLAME CLASS : 94V-0,94V-2

COLOR : TRANSPARENT

UNIT : mm



PART NO	L	PACKAGE
LEDLP-166	13.9	1000
LEDLP-251	12.7	1000